

Certified, Filed and or Recorded on
October 28, 2014 12:57 PM

BENTON COUNTY MINNESOTA
MARILYN J NOVAK
COUNTY RECORDER

By: OK

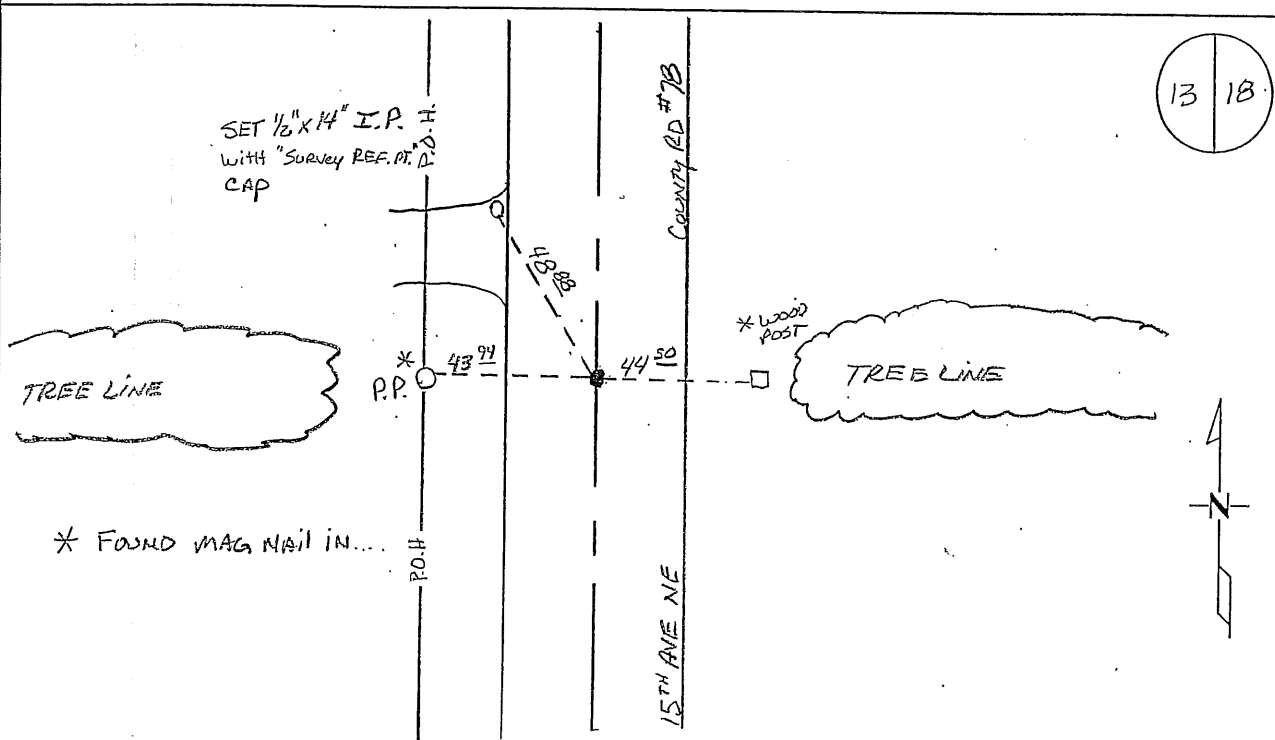
6 - V - 1

CERTIFICATE OF LOCATION OF GOVERNMENT CORNER

EAST QUARTER Corner of Section 13, Township 38 N, Range 31 W
4TH Principal Meridian, State of Minnesota, County of Benton

At the corner location shown on the sketch:

- On 05/27/2011 found a 7" spike Below Road Surface
- left monument as found lowered monument removed monument (explain)
- On 05/27/2011 placed an 1/2" X 1/4" Iron Pipe CAP # 19552



Statement of evidence for this corner location is on back of this page.

I hereby certify that this document was researched and prepared by me or under my direct supervision and that I am a licensed Land Surveyor under the laws of the State of Minnesota.

Signature Jerome C. Wittstock
Benton County Surveyor
License No. 19552

Date: 28 Oct. 2014

Benton County Surveyor's Office
 Jerome C. Wittstock, County Surveyor
 Minnesota License No. 19552

Statement of Evidence:**D133**

East Quarter Corner of Section 13, Township 38 North, Range 31 West, East Langola Township, 4th Principal Meridian, Benton County, Minnesota.

1849 Original US General Land Office survey set a wood post in a mound at the corner location.

1941 County Engineer's Notebook No. 151 contains a road survey for CAR 41 running south to north on township line. Corner is shown marked by a hub set in center of road on fence line east. Ties:

Cor. FP	E	27.8'
15" Box Elder	NE	34.8'

Stationing gives distances of 2732.4 feet to the SE corner and 2674.0 feet to the NE corner with a delta angle of 1-20' left.

1962 County Engineer's Notebook No. 230 contains a road survey for CSAH 15 running south to north on township line. Corner is shown marked by a spike set in center of road on fence line east. Ties:

5" Chi. Elm	E	49.5
2 nd Steel FP	SE	50.5

Stationing gives distances of 2733.9 feet to the SE corner and 2674.7 feet to the NE corner with a delta angle of 1-20' left.

2011 The Benton County Surveyor's Office found a seven inch spike below the road surface in the north-south centerline on tree lines east and west. The distance north for a half mile fits the 1941 distance within two feet and south within a foot. Falling at the intersection of occupation lines and fitting the historic distances, the accepted the spikes position and set a 1/2" x 14" iron pipe capped 19552 to mark the corner position.

County Coordinates obtained by GPS

NAD 83 (1996 Adjustment)

N - 183090.922

E - 478775.296