

428339

Certified, Filed and or Recorded on
March 20, 2018 11:25 AM

BENTON COUNTY MINNESOTA
CHERYL L. KANTOR
COUNTY RECORDER

By: BA

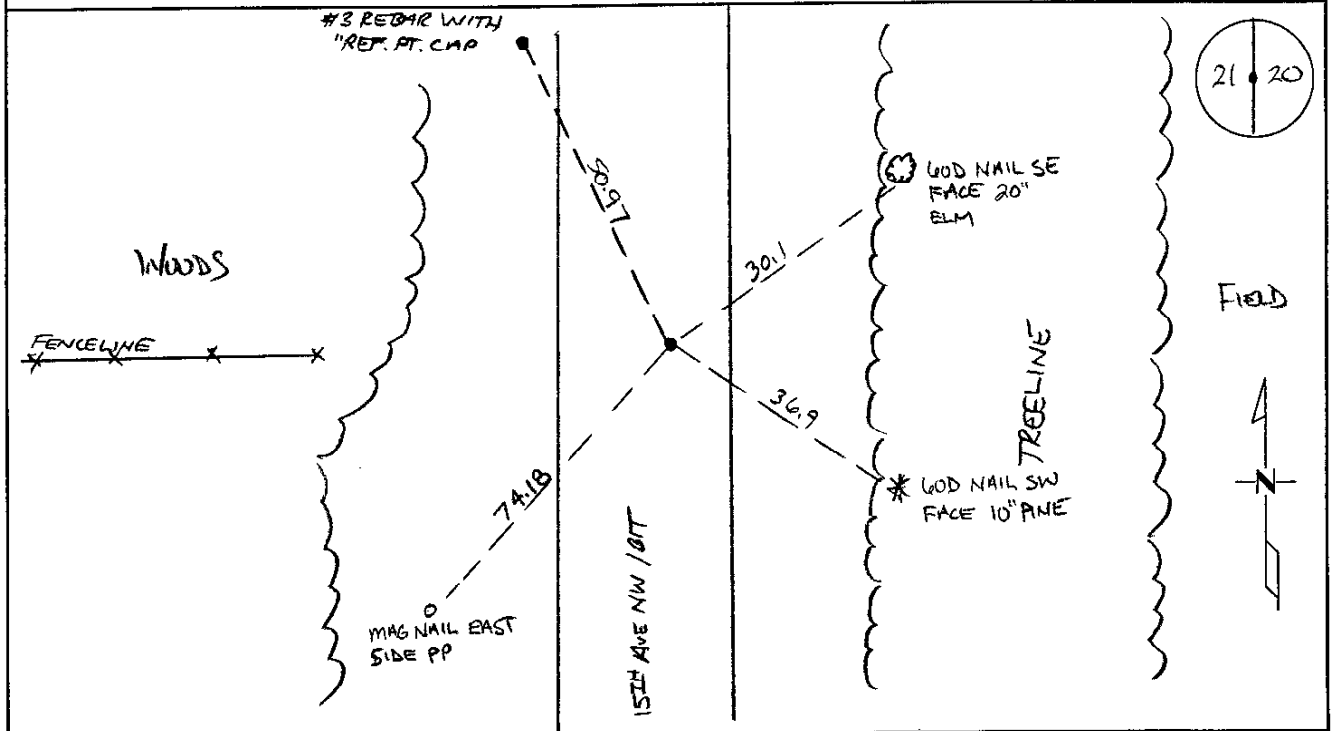
6 - v - 1

CERTIFICATE OF LOCATION OF GOVERNMENT CORNER

EAST QUARTER Corner of Section 21, Township 38, Range 31
4TH Principal Meridian, State of Minnesota, County of Benton

At the corner location shown on the sketch:

- On 01/01/2009 found a CAST IRON MONUMENT 2' EAST OF NORTH/
SOUTH CENTERLINE
- left monument as found lowered monument removed monument (explain)
- On _____ placed an _____



Statement of evidence for this corner location is on back of this page.

I hereby certify that this survey, plan, or report was prepared by me or under my direct supervision and that I am a duly Licensed Land Surveyor under the laws of the state of Minnesota.

Signature Jerome C. Wittstock
Jerome C. Wittstock, PS, CFedS, Benton County Surveyor
License No. 19552

Date: 19 March 2018

PAGE 1 OF 2

Benton County Surveyor's Office
 Jerome C. Wittstock, County Surveyor
 Minnesota License No. 19552

Statement of Evidence:**D213**

East Quarter of Section 21, Township 38 North, Range 31 West, East Langola Township,
 4th Principal Meridian, Benton County, Minnesota.

- 1852 Original US General Land Office survey set a wood post at this location and bearing trees were recorded.
- | | | |
|-------------|------------|-----------|
| 10" Bur Oak | N 65 W | 134 links |
| 8" Bur Oak | N 48 1/2 E | 102 links |
- 1961 MN/DNR survey crew found I.P. 2632.4 feet south of the NE corner of Section 21.
- 1985 David Regan, LS 12236, found a 3/8" steel rod in the centerline of roads north/south and a fence line west. He replaced it with a cast iron monument and filed a Certificate of Location (#176056).
- 2009 Westwood Professional Services found a CIM in the north-south centerline on a fence line west. Measurement north to a 1/2-inch iron pin at the northeast corner of Section 21 is about 1.5 feet longer than the 1961 measurement. The CIM is accepted as marking the corner position.

County Coordinates obtained by GPS
 NAD 83 (1996 Adjustment)
 N 177611.011
 E 462661.739

CERTIFICATE OF LOCATION OF GOVERNMENT CORNER

East Quarter _____ Corner of Section 21, Township 38, Range 31, 4th P.M.

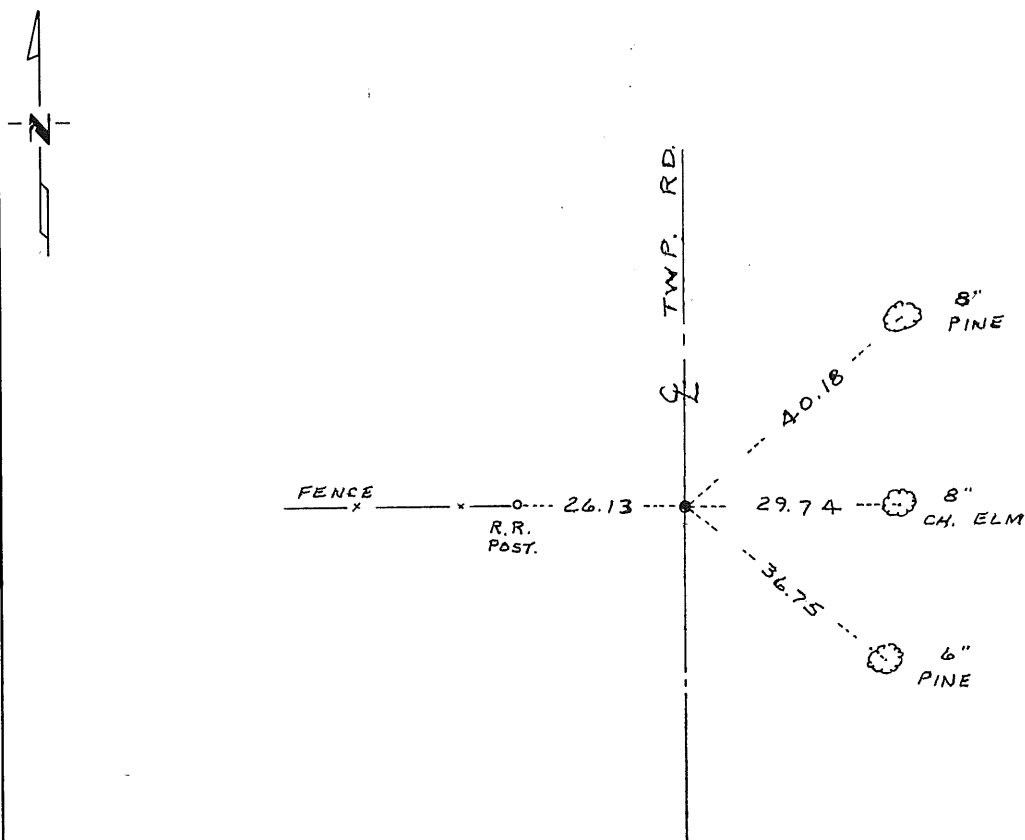
STATE OF MINNESOTA, County of Benton

At the corner location shown on the sketch:

- On 4/17/85 found a 3/8 inch steel rod in centerline Twp Road
DATE
north-south and fence line west
 - left monument as found, lowered monument, removed monument (explain)
- On 4/17/85 placed a Benton County cast iron monument
DATE

SENEZ
NE 25 21
MAY 22
38 31

SKETCH OF REFERENCE TIES



176056

Statement of evidence relative to this corner location is on back of page.

I hereby certify that this document and the data contained herein was prepared by me or under my direct supervision.

David P. Regan 12/13/85
SIGNATURE DATE

Registration No. 12236

- Land Surveyor, Professional Engineer
- County Surveyor, County Engineer

County Recorder
OFFICE OF THE REGISTER OF DEEDS
County of Benton

I hereby certify that this document was filed in the Reg. of Deeds office at 1 P.M. on the 16 day of January A.D., 19 86
County Recorder
Register of Deeds Alice C. Engelmeier

By [Signature], Deputy

DOCUMENT NO. _____