

A 364285

Certified, Filed and or Recorded on
Mar. 11, 2009 AT 10:23AM

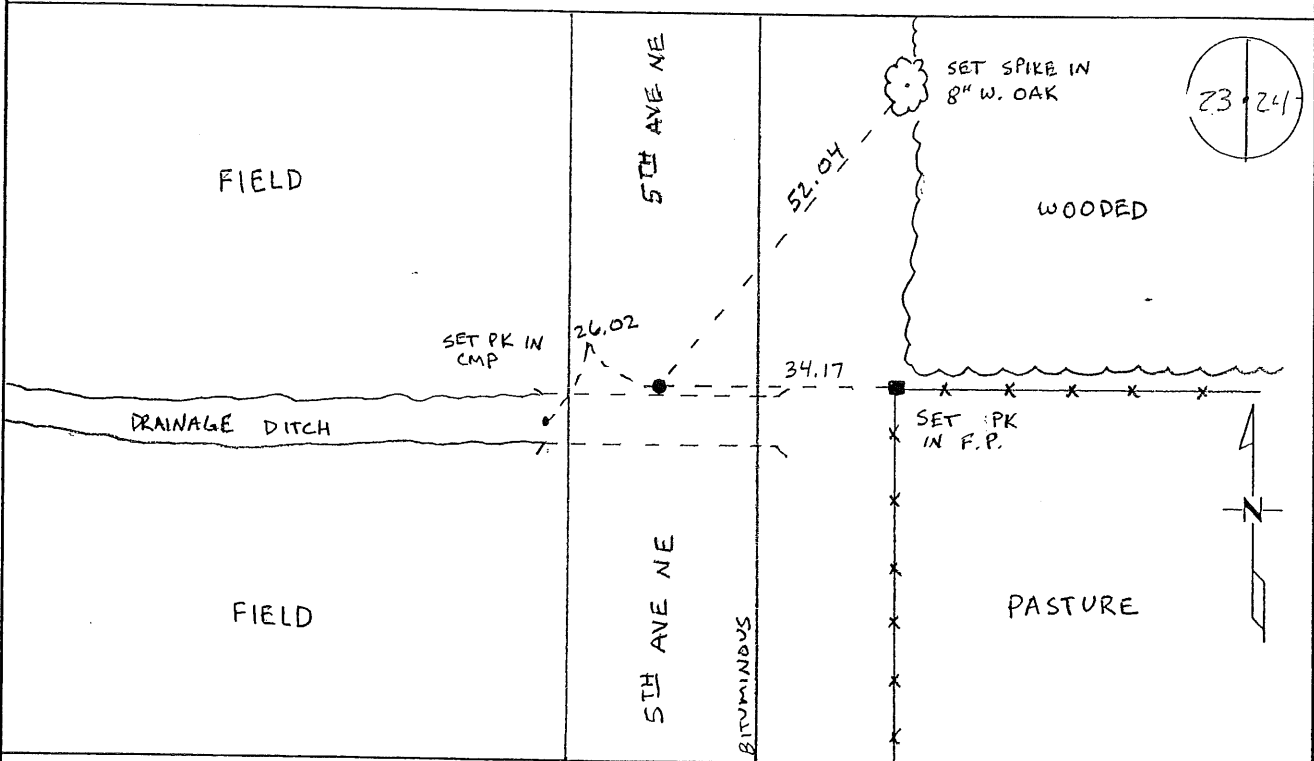
Signed: JU
MARILYN J NOVAK G V I
BENTON COUNTY MINNESOTA
MARILYN J NOVAK
COUNTY RECORDER

CERTIFICATE OF LOCATION OF GOVERNMENT CORNER

EAST QUARTER Corner of Section 23, Township 38N, Range 31W
4TH Principal Meridian, State of Minnesota, County of Benton

At the corner location shown on the sketch:

- On _____ found a _____
- left monument as found lowered monument removed monument (explain)
- On 12/23/08 placed an PK NAIL WITH BENTON COUNTY SURVEYOR DISK
1' +/- EAST OF CENTERLINE



Statement of evidence for this corner location is on back of this page.

I hereby certify that this document was researched and prepared by me or under my direct supervision and that I am a licensed Land Surveyor under the laws of the State of Minnesota.

Signature *Ch. Sigel*
Deputy County Surveyor
License No. 43932

Date: 3/6/09

PAGE 1 OF 2

Statement of Evidence:

D233

East Quarter Corner of Section 23, Township 38 North, Range 31 West, East Langola Township, 4th Principal Meridian, Benton County, Minnesota.

- 1852 Original US General Land Office survey set a wood post in a marsh as the water was too deep for a mound.
- 1989 Bruce Skipton, RLS #17768, found no evidence of the corner and established the corner by lost method. He set a 3/4" capped pipe midway and on line between the NE and SE corners. Corner fell 2 feet east of a north/south road centerline. He filed a Certificate of Location (#195976), which shows distances of 2663.26 feet to the section corners.
- 2002 No resurvey information was found on this corner in the Benton County records.
- 2008 Westwood Professional Services, Inc. searched the area with metal locator and nothing was found. We set a PK nail with Benton County Disk at the lost position. Position falls 1' +/- east of the centerline of 5th Ave NE and we measured 2663.44 feet to the NE and SE section corners. Position agrees with 1989 Skipton distances and fence line occupation to the east.
County Coordinates obtained by GPS
NAD 83 (1996 Adjustment)
N-177603.991
E-473542.143

CERTIFICATE OF LOCATION OF GOVERNMENT CORNER

East Quarter _____ Corner of Section 23, Township 38N, Range 31W, 4th P.M.

STATE OF MINNESOTA, County of Benton

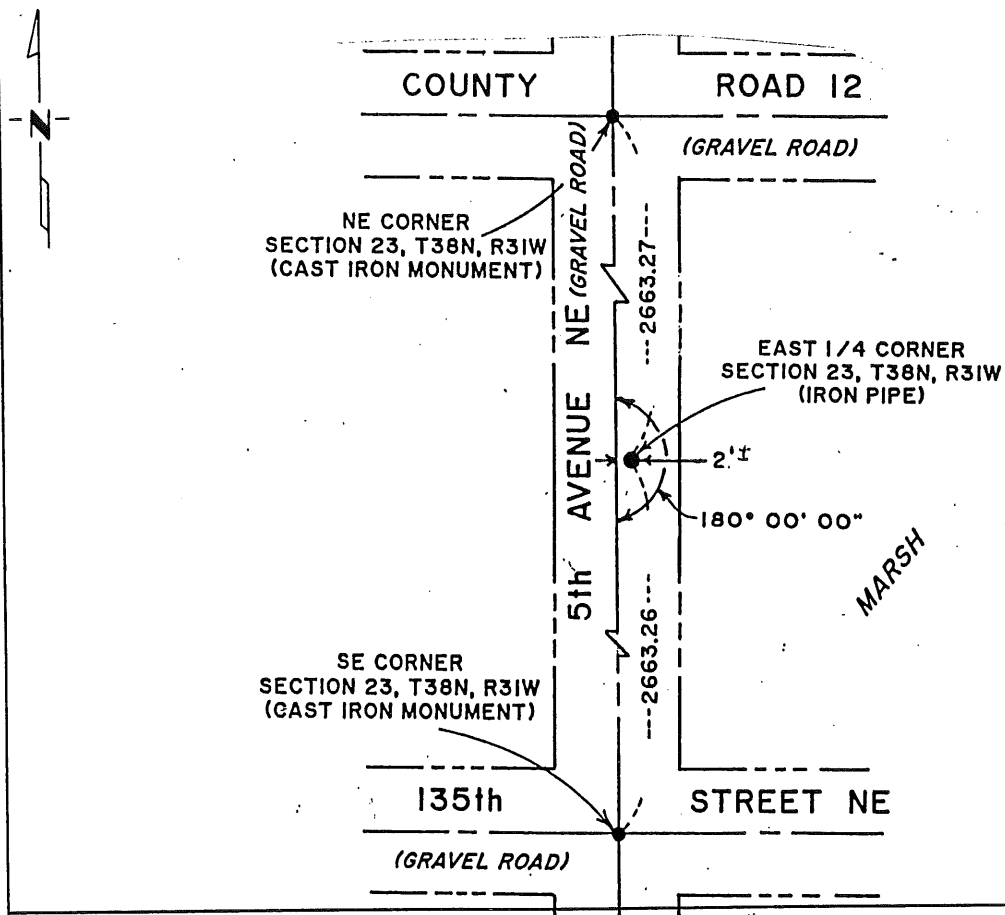
At the corner location shown on the sketch:

On _____ found a _____
DATE

left monument as found, lowered monument, removed monument (explain)

On 11-30-89 placed a 3/4 inch iron pipe with 17768 cap
DATE

SKETCH OF REFERENCE TIES



Statement of evidence relative to this corner location is on back of page.

I hereby certify that this document and the data contained herein was prepared by me or under my direct supervision.

Bruce W. Shultz
SIGNATURE

1-5-90
DATE

Registration No. 17768

Land Surveyor, Professional Engineer

County Surveyor, County Engineer

OFFICE OF THE COUNTY RECORDER
County of Benton

I hereby certify that this document was filed in the Co. Recorders office at _____ .M. on the _____ day of _____ A.D., 19 _____

County Recorder _____

By _____, Deputy

DOCUMENT NO. _____

Statement of Evidence:

1. The GLO was accomplished by Edwin Lance Jr. in June, 1852.
2. The county records show no reference to this corner.
3. On November 30, 1989, Paul E. Wellen & Associates, Inc. set a 3/4 inch iron pipe with 17768 cap on line and midway between the northeast corner and southeast corner of Section 23.

1 9 5 9 7 6

OFFICE OF
BENTON COUNTY RECORDER
BENTON COUNTY, MN
CERTIFIED TO BE FILED
AND/OR RECORDED ON

JAN 11 8 43 AM '90

ALICE G. ENGELMEYER
COUNTY RECORDER

BY *g* DEPUTY