

Certified, Filed and or Recorded on
October 28, 2014 12:57 PM

BENTON COUNTY MINNESOTA
MARILYN J NOVAK
COUNTY RECORDER

By: CK

B - V - 1

CERTIFICATE OF LOCATION OF GOVERNMENT CORNER

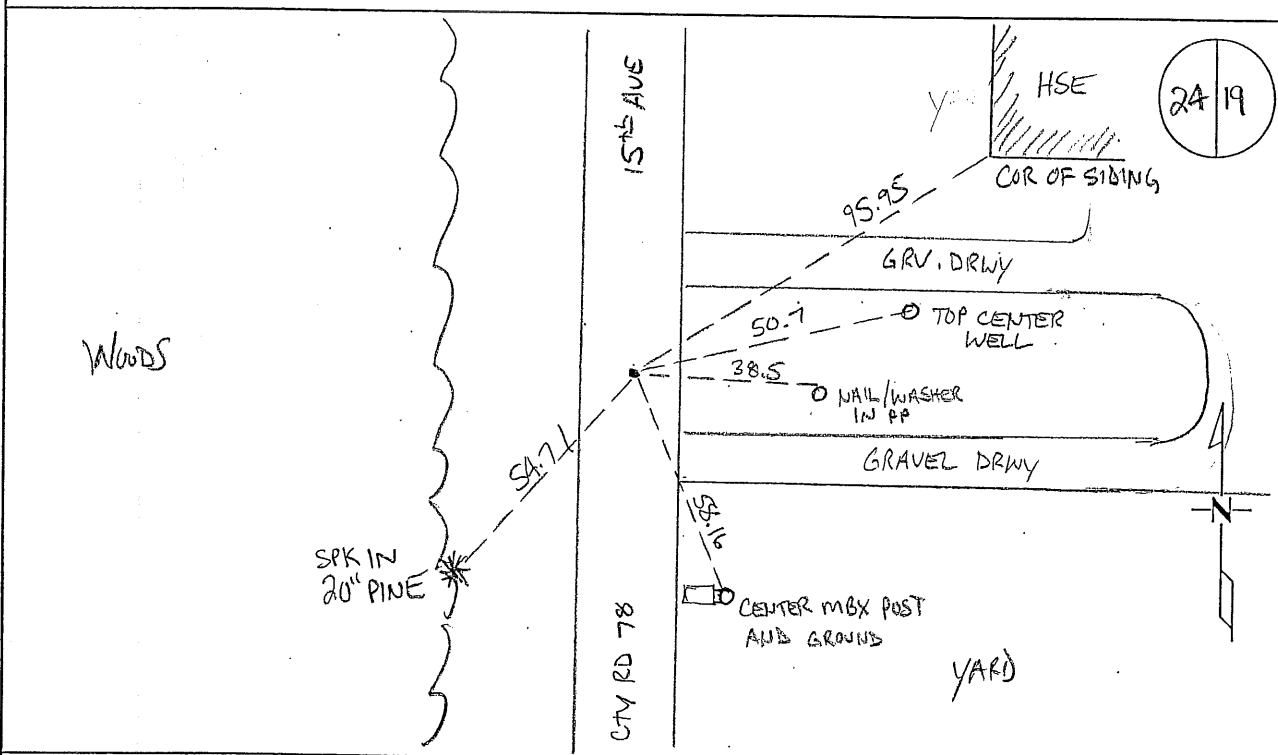
EAST QUARTER Corner of Section 24, Township 38 N, Range 31 W
4TH Principal Meridian, State of Minnesota, County of Benton

At the corner location shown on the sketch:

On 08/08/2011 found a RR SPIKE 2.5' EAST OF N/S CENTERLINE

left monument as found lowered monument removed monument (explain)

On _____ placed an _____



Statement of evidence for this corner location is on back of this page.

I hereby certify that this document was researched and prepared by me or under my direct supervision and that I am a licensed Land Surveyor under the laws of the State of Minnesota.

Signature Jerome C. Wittstock
Benton County Surveyor
License No. 19552

Date: 28 Oct. 2014

Benton County Surveyor's Office
 Jerome C. Wittstock, County Surveyor
 Minnesota License No. 19552

Statement of Evidence:**D243**

East Quarter Corner of Section 24, Township 38 North, Range 31 West, East Langola Township, 4th Principal Meridian, Benton County, Minnesota.

1849 Original US General Land Office survey set a wood post in a mound with a pit 6 links south at the corner location.

1941 County Engineer's Notebook No. 151 contains a road survey for CAR 41 running south to north on township line. Corner is shown marked by a hub set in center of road on fence lines east and west. Ties:

Cor. FP	E	30.8'
6" Oak	NE	38.6'

Stationing gives distances of 2644.2 feet to the SE corner and 2661.1 feet to the NE corner with a delta angle of 0-37' left.

1974 M.W. Carley marked corner with a RR Spike. Said corner is 2.5 feet east of the north/south centerline with the following reference ties:

PP	E	39.64
W Cor 1 ½ SF Hse	NE	96.17
6" Triple Elm	NW	52.27
Old fence line	East	
2648.5 feet north of section corner		

1989 Bruce Skipton, LS 17768, found a RR Spike and filed a Certificate of Location (#195977). Notes show distances of 2660.58 feet to the NE corner and 2647.82 feet to the SE corner.

2011 The Benton County Surveyor's Office found the railroad spike and ties and verified the distances north and south. The spike is accepted as marking the corner position.

Coordinates Obtained by GPS
 NAD 83 (1996 Adjustment) to the Railroad Spike:
 N- 177696.150
 E- 478888.775