

419

381208

Certified, Filed and or Recorded on
April 19, 2011 11:55 AM

BENTON COUNTY MINNESOTA
MARILYN J NOVAK
COUNTY RECORDER

By: BW

G - V - I

CERTIFICATE OF LOCATION OF GOVERNMENT CORNER

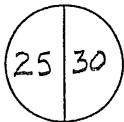
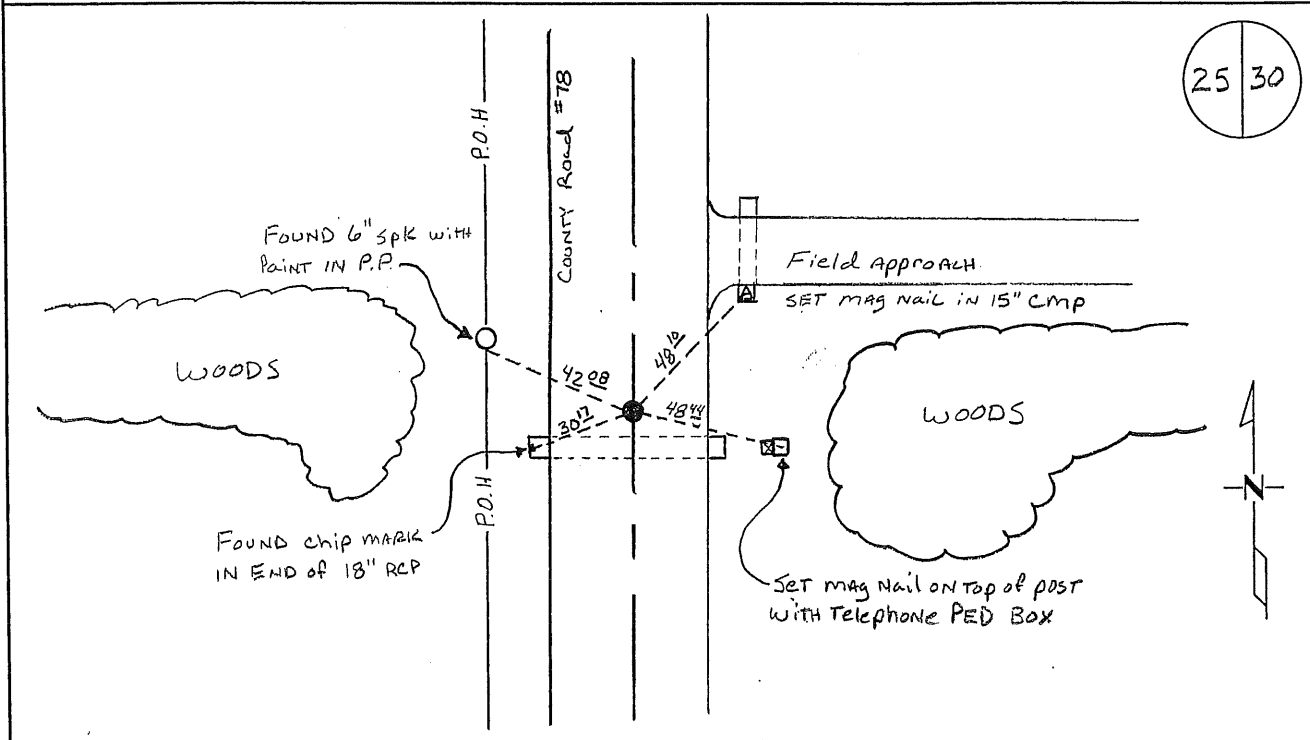
East Quarter Corner of Section 25, Township 38, Range 31
4TH Principal Meridian, State of Minnesota, County of Benton

At the corner location shown on the sketch:

On 03/25/2011 found a 1/2" IRON Pipe Capped Flush with Pavement.

left monument as found lowered monument removed monument (explain)

On _____ placed an _____



Statement of evidence for this corner location is on back of this page.

I hereby certify that this document was researched and prepared by me or under my direct supervision and that I am a licensed Land Surveyor under the laws of the State of Minnesota.

Signature Jerome C. Wittstock
Benton County Surveyor
License No. 19552

Date: 4/10/2011

Benton County Surveyor's Office
Jerome C. Wittstock, County Surveyor
Minnesota License No. 19552

Statement of Evidence:

D253

East Quarter Corner of Section 25, Township 38 North, Range 31 West, East Langola Township, 4th Principal Meridian, Benton County, Minnesota.

- 1849 Original US General Land Office survey set a wood post in a mound with pit 6 links south at the corner location.
- 1940 County Engineer's Notebook No. 133 contains a road survey for CAR No. 41 running south to north. No corner is shown. Stationing gives distance of 5366.3 feet for the east line of the section.
- 2011 The Benton County Surveyor's Office found and located an iron capped 42621 in the north-south centerline of County Road No. 78 and on a wood line to the east and west. The found iron falls on line between the northeast and southeast corners of Section 25 and is 0.8 feet north of the lost position, with the overall mile fitting the 1940 measurement within 1.5 feet. The 1/2" iron is accepted as marking the obliterated corner position. GPS Coordinates were observed and reference ties established as shown.