

428872

Certified, Filed and or Recorded on
April 20, 2018 9:49 AM

BENTON COUNTY MINNESOTA
CHERYL L. KANTOR
COUNTY RECORDER

By: DS

6 - V - I

CERTIFICATE OF LOCATION OF GOVERNMENT CORNER

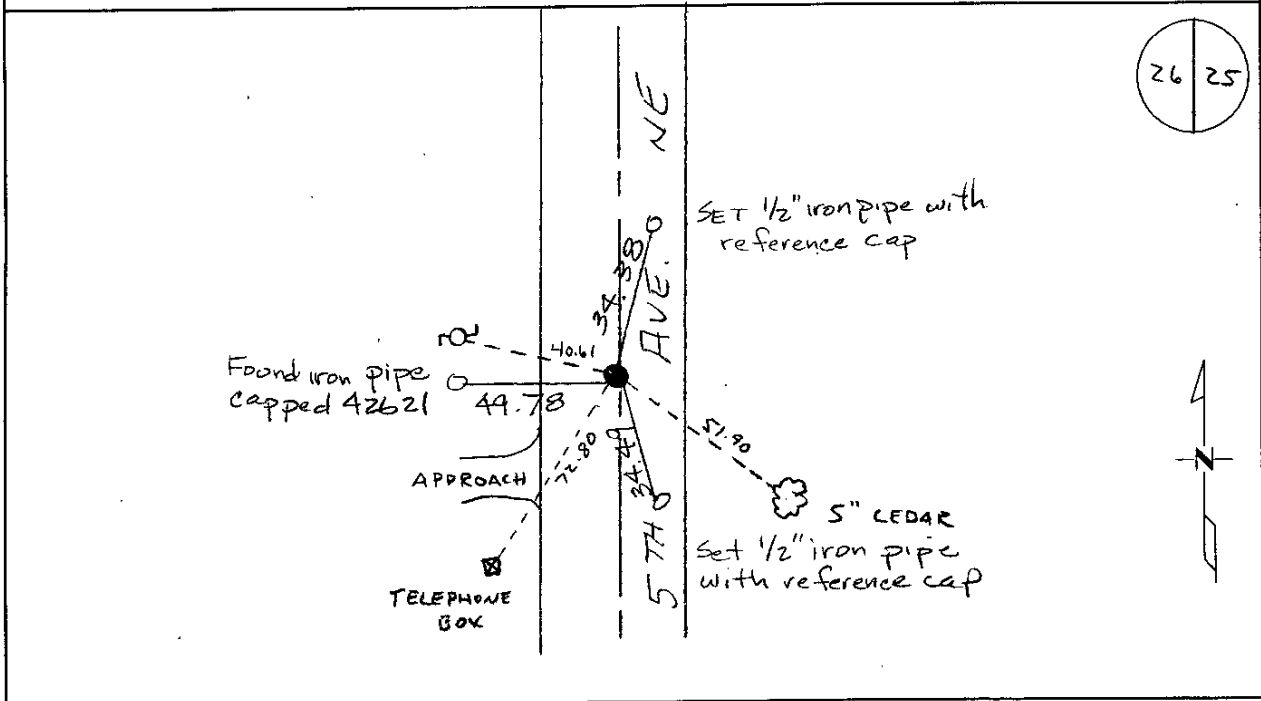
EAST QUARTER Corner of Section 26, Township 38, Range 31
4TH Principal Meridian, State of Minnesota, County of Benton

At the corner location shown on the sketch:

On 1/30/08 found a 1/2" OPEN PIPE DOWN 1.6'

left monument as found lowered monument. removed monument (explain)

On _____ placed an _____



Statement of evidence for this corner location is on back of this page.

I hereby certify that this survey, plan, or report was prepared by me or under my direct supervision and that I am a duly Licensed Land Surveyor under the laws of the state of Minnesota.

Signature Jerome C. Wittstock
Jerome C. Wittstock, PS, CFedS, Benton County Surveyor
License No. 19552

Date: 11 April 2018

Benton County Surveyor's Office
 Jerome C. Wittstock, County Surveyor
 Minnesota License No. 19552

Statement of Evidence:

D263

East Quarter Corner of Section 26, Township 38 North, Range 31 West, East Langola Township, 4th Principal Meridian, Benton County, Minnesota.

- 1852 Original US General Land Office survey set a wood post in a mound at the corner location with a pit 8 links east.
- 1977 Paul Wellen, LS 10461, established corner by lost method, midway and on line between section corners. He set a 1/2" iron pipe, which fell in the centerline of road north/south and in line with a fence line from the east. He filed Certificate of Location (#147256). He measured a distance of 5305.09 feet for the east line of Section 26.
- 2002 No resurvey information was found on this corner in the Benton County records.
- 2004 Certificate of Survey by Barry Dorniden, LS 23044, shows 1/2" iron pipe set at the corner with distance of 2652.46 feet to the SE corner. (He reported that he could not find Wellen's iron and reset corner based on Wellen's information.
- 2008 The Benton County Surveyor's Office found a 1/2" open iron pipe down 1.6 feet in the north-south centerline of 5th Avenue Northeast. The iron pipe fits a split of the distance within 7.6 feet falling about 20 feet south of line. The fence called for in 1977, along with the reference ties, are no longer existing. The iron is accepted as marking the corner position.

County Coordinates obtained by GPS.
 NAD 83 (1996 Adjustment)
~~N-191000.486~~
~~E-475804.633~~

- 2018 The coordinate shown above is incorrect. The correct coordinates are shown below.

County Coordinates obtained by GPS.
 NAD 83 (1996 Adjustment)
 N- 172288.532
 E- 473559.203

428600

Certified, Filed and or Recorded on
April 03, 2018 1:30 PM

BENTON COUNTY MINNESOTA
CHERYL L. KANTOR
COUNTY RECORDER

By: [Signature]

6 - v - 1

CERTIFICATE OF LOCATION OF GOVERNMENT CORNER

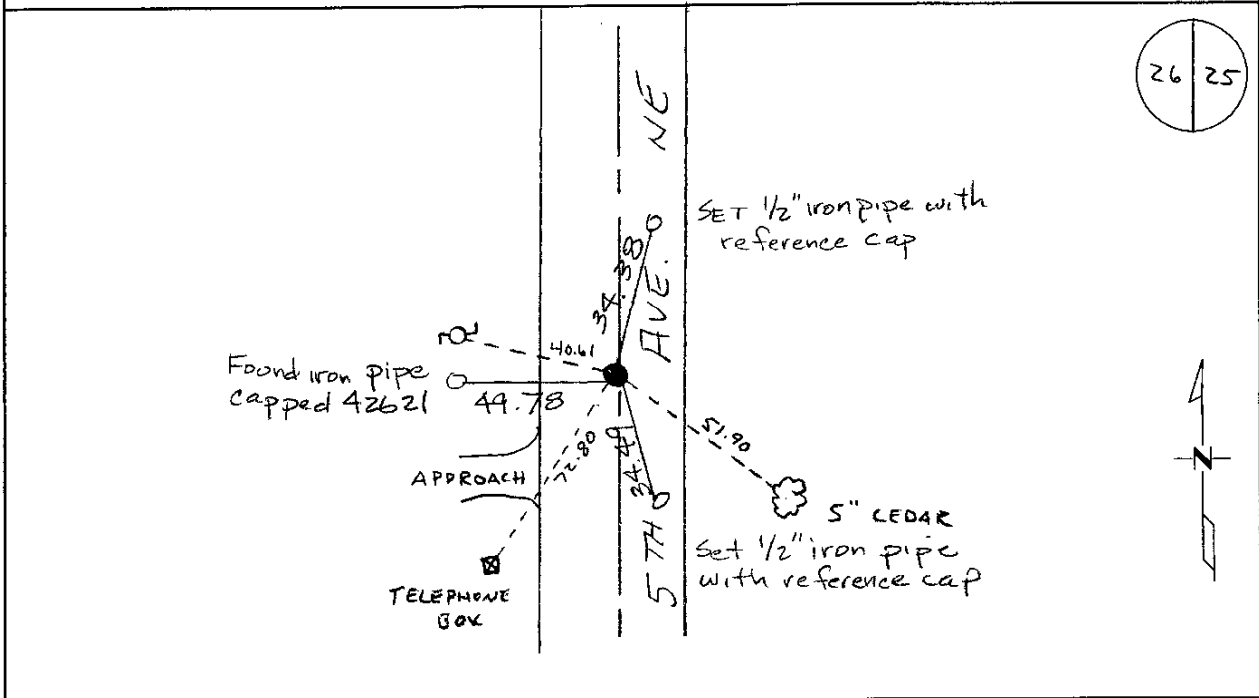
EAST QUARTER Corner of Section 26, Township 38, Range 31
4TH Principal Meridian, State of Minnesota, County of Benton

At the corner location shown on the sketch:

On 1/30/08 found a 1/2" OPEN PIPE DOWN 1.6'

left monument as found lowered monument removed monument (explain)

On _____ placed an _____



Statement of evidence for this corner location is on back of this page.

I hereby certify that this survey, plan, or report was prepared by me or under my direct supervision and that I am a duly Licensed Land Surveyor under the laws of the state of Minnesota.

Signature Jerome C. Wittstock
Jerome C. Wittstock, PS, CFedS, Benton County Surveyor
License No. 19552

Date: 3/29/2018

Benton County Surveyor's Office
Jerome C. Wittstock, County Surveyor
Minnesota License No. 19552

Statement of Evidence:

D263

East Quarter Corner of Section 26, Township 38 North, Range 31 West, East Langola Township, 4th Principal Meridian, Benton County, Minnesota.

- 1852 Original US General Land Office survey set a wood post in a mound at the corner location with a pit 8 links east.
- 1977 Paul Wellen, LS 10461, established corner by lost method, midway and on line between section corners. He set a 1/2" iron pipe, which fell in the centerline of road north/south and in line with a fence line from the east. He filed Certificate of Location (#147256). He measured a distance of 5305.09 feet for the east line of Section 26.
- 2002 No resurvey information was found on this corner in the Benton County records.
- 2004 Certificate of Survey by Barry Dorniden, LS 23044, shows 1/2" iron pipe set at the corner with distance of 2652.46 feet to the SE corner. (He reported that he could not find Wellen's iron and reset corner based on Wellen's information.
- 2008 The Benton County Surveyor's Office found a 1/2" open iron pipe down 1.6 feet in the north-south centerline of 5th Avenue Northeast. The iron pipe fits a split of the distance within 7.6 feet falling about 20 feet south of line. The fence called for in 1977, along with the reference ties, are no longer existing. The iron is accepted as marking the corner position.

County Coordinates obtained by GPS.
NAD 83 (1996 Adjustment)
N- 191000.486
E- 475804.633

CERTIFICATE OF LOCATION OF GOVERNMENT CORNER

East _____ Corner of Section 26, Township 38, Range 31, 4th P.M.
STATE OF MINNESOTA, County of Benton

At the corner location shown on the sketch:

On _____ found a _____
DATE

left monument as found, lowered monument, removed monument (explain)

On 4/4/77 placed a 1/2 " iron pipe
DATE

SKETCH OF REFERENCE TIES

Refer to next page

Statement of evidence relative to this corner location is on back of page.

#147256

I hereby certify that this document and the data contained herein was prepared by me or under my direct supervision.

Paul E. Wellen 12-19-77
SIGNATURE DATE

Registration No. 10461

Land Surveyor, Professional Engineer

County Surveyor, County Engineer

OFFICE OF THE REGISTER OF DEEDS
County of Benton

County Recorder

I hereby certify that this document was filed in the Reg. of Deeds office at 4 P.M. on the 10th day of January A.D., 19 78

F. A. Johnson
County Recorder
Register of Deeds

By A. E. County Recorder, Deputy

DOCUMENT NO. _____

CERTIFICATE OF LOCATION OF GOVERNMENT CORNER

EAST Corner of Section 26, Township 38, Range 31, 4th P.M.

STATE OF MINNESOTA, County of BENTON

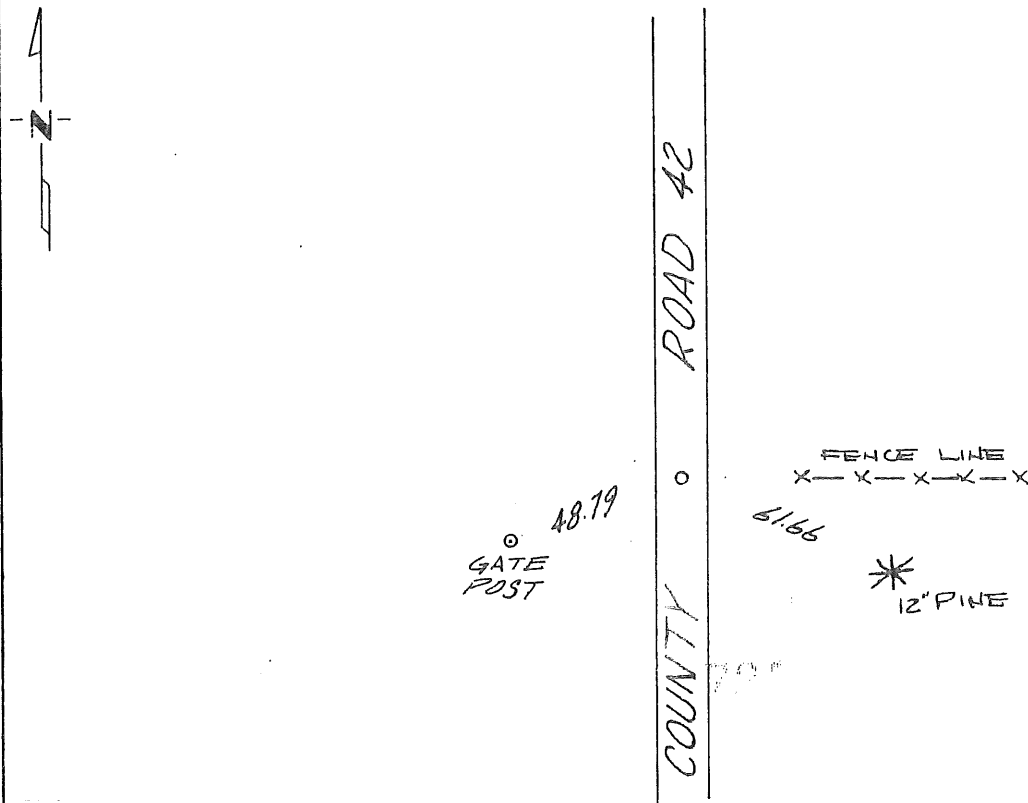
At the corner location shown on the sketch:

On _____ found a _____
DATE

left monument as found, lowered monument, removed monument (explain)

On 4/4/77 placed a 1/2" iron pipe
DATE

SKETCH OF REFERENCE TIES



Statement of evidence relative to this corner location is on back of page. **147256**

I hereby certify that this document and the data contained herein was prepared by me or under my direct supervision.

Paul J. Keller 12/19/77
SIGNATURE DATE

Registration No. 10461
 Land Surveyor, Professional Engineer
 County Surveyor, County Engineer

OFFICE OF THE REGISTER OF DEEDS
County of Benton

I hereby certify that this document was filed in the Reg. of Deeds office at 4 P. .M. on the 10th day of January A.D., 1978

Register of Deeds J. A. Johnson
By A. G. County Recorder, Deputy

DOCUMENT NO. _____

Placed a $\frac{1}{2}$ " iron pipe at proportionate government distance between the northeast corner and the southeast corner of Section 26, T38N, R31W. Witnessed by the centerline of a county road running north and south and a fence line east.