

389405

Certified, Filed and or Recorded on
June 20, 2012 1:49 PM

BENTON COUNTY MINNESOTA
MARILYN J NOVAK
COUNTY RECORDER

By: BW

G -- V -- I

FEE AMOUNT \$46.00

CERTIFICATE OF LOCATION OF GOVERNMENT CORNER

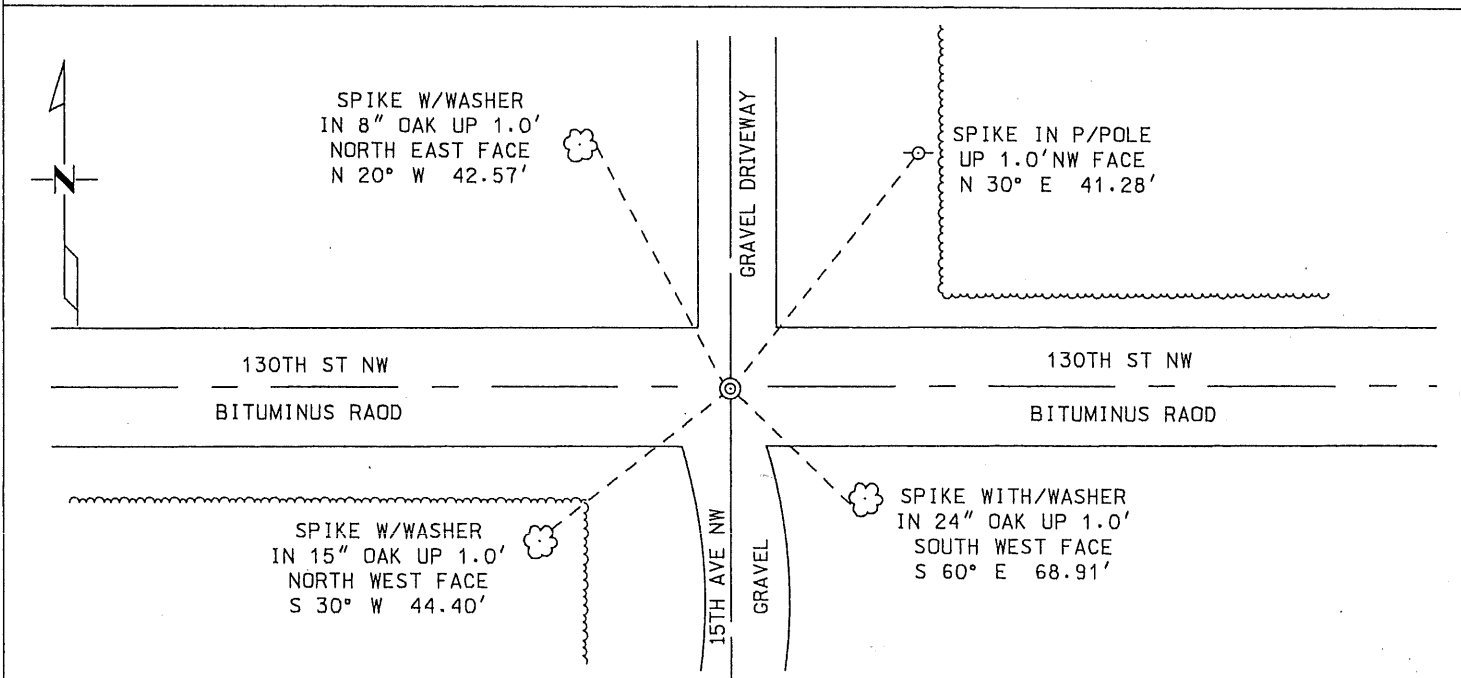
EAST QUARTER Corner of Section 28, Township 38 N, Range 31 W
4TH Principal Meridian, State of Minnesota, County of BENTON

At the corner location shown on the sketch:

On 3-7-2012 found a STANDARD CAST IRON MONUMENT 1.0' DOWN
DATE

left monument as found lowered monument removed monument (explain)

On _____ placed a _____
DATE



Statement of evidence for this corner location is on back of this page.

I hereby certify that this survey, plan, or report was prepared by me or under my direct supervision and that I am a duly Licensed Land Surveyor under the laws of the state of Minnesota.

Signature Trevor L. Skeesick Date 3-17-2012 License No. 46573
Trevor L. Skeesick MNDOT

Title: Land Surveyor Professional Engineer County Surveyor County Engineer

Statement of Evidence

East Quarter of Section 28, Township 38 North, Range 31 West, East Langola Township, 4th Principal Meridian, Benton County, Minnesota.

- 1852 Original US General Land Office survey set a wood post at this location and bearing trees were recorded.
 6" Bur Oak S 50 E 13 links
 5" Bur Oak S 25 W 40 links
- 1976 William Lunser, LS 9394, set a 3/4" pipe at the centerline of roads west/south. He filed a Certificate of Location (#147074).
- 1979 Carley/Lang noted a 3/4" Iron Monument at the corner.
- 1989 MN/DOT set a cast iron monument over the 3/4" pipe.
- 1998 MN/DOT RIGHT OF WAY PLAT NO. 05-1 shows CIM.
- 2000 Samuel DeLeo, LS 40341, found a cast iron monument at the centerline of roads east/west/south. He filed a Certificate of Location (271521) and notes a distance of 2626.92 feet to the NE corner Sec 28 (CIM) and a distance of 2673.06 feet to the SE corner Sec 28 (CIM).
- 2004 Surveying & Engineering Professionals, Inc. found a CIM at the corner location. Measured 2626.80 feet to the NE corner and 2673.49 feet to the SE corner.
 County Coordinates obtained by GPS.
 NAD 83 (1996 Adjustment)
 N-172329.049
 E-462817.214
- 2008 Samuel DeLeo, LS 40341, found a cast iron monument at the approximate centerline of roads east/west/south. Distances to the NE and SE corners were not measured at this time. New reference ties were set and recorded. County Coordinates were obtained.
 County Coordinates obtained by GPS
 NAD 83 (1996 Adjustment)
 N-172328.513
 E-462817.509
- 2012 On April 7th, 2012, The Minnesota Department of Transportation found a Cast Iron Monument at the East Quarter Corner of Section 28. Four existing ties were found and verified with the Certificate of Location Corner on file at the Benton County's Recorder's office (#362871). The Distance's measured to corresponding corners were checked and verified, along with the coordinates as recorded on the previous statement of evidence in 2004. No witnesses could provide information contrary to the location of the Cast Iron Monument.

The Minnesota Department of Transportation accepts the Cast Iron Monument as the correct location of the East Quarter Corner of Section 28.

For details and survey analysis, contact the Minnesota Department of Transportation District Surveys Office in Baxter, Minnesota

1-6

A 362871

Certified, Filed and or Recorded on
JAN. 06, 2009 AT 03:07PM

Signed: CK
MARILYN J NOVAK
BENTON COUNTY MINNESOTA
MARILYN J NOVAK
COUNTY RECORDER

CERTIFICATE OF LOCATION OF GOVERNMENT CORNER

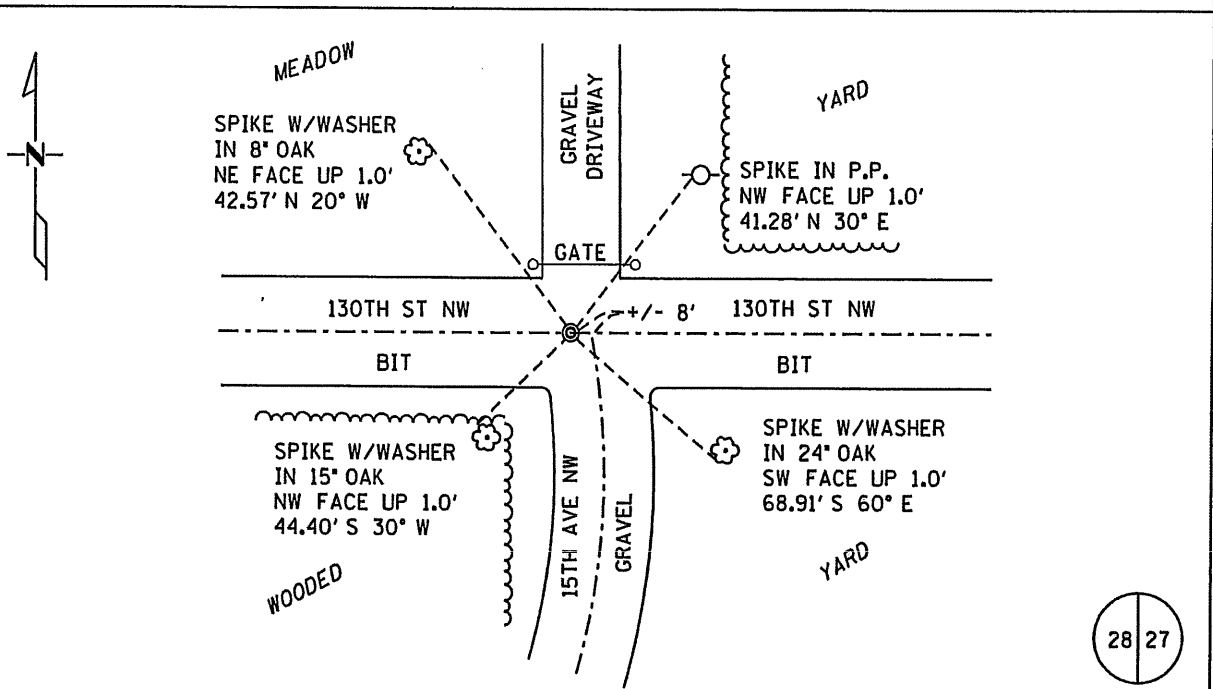
East Quarter Corner of Section 28, Township 38 N, Range 31 W
4TH Principal Meridian, State of Minnesota, County of Benton

At the corner location shown on the sketch:

On 7/28/2009 found a STANDARD CAST IRON MONUMENT
DATE

left monument as found lowered monument removed monument (explain)

On _____ placed a _____
DATE



Statement of evidence for this corner location is on back of this page.

I hereby certify that this document was researched and prepared by me or under my direct supervision.

Signature Saul J. DeLeo Date 9-12-2008 License No. 40341

Title: Land Surveyor Professional Engineer County Surveyor County Engineer

Statement of Evidence:

D283

East Quarter of Section 28, Township 38 North, Range 31 West, East Langola Township,
4th Principal Meridian, Benton County, Minnesota.

- 1852 Original US General Land Office survey set a wood post at this location and bearing trees were recorded.
- | | | |
|------------|--------|----------|
| 6" Bur Oak | S 50 E | 13 links |
| 5" Bur Oak | S 25 W | 40 links |
- 1976 William Lunser, LS 9394, set a 3/4" pipe at the centerline of roads west/south. He filed a Certificate of Location (#147074).
- 1979 Carley/Lang note a 3/4" I.M. at the corner.
- 1989 MN/DOT set a cast iron monument over the 3/4" pipe.
- 1998 MN/DOT RIGHT OF WAY PLAT NO. 05-1 shows CIM.
- 2000 Samuel DeLeo, LS 40341, found a cast iron monument at the centerline of roads east/west/south. He filed a Certificate of Location (271521) and notes a distance of 2626.92 feet to the NE corner Sec 28 (CIM) and a distance of 2673.06 feet to the SE corner Sec 28 (CIM).
- 2004 Surveying & Engineering Professionals, Inc. found a CIM at the corner location. Measured 2626.80 feet to the NE corner and 2673.49 feet to the SE corner. County Coordinates obtained by GPS.
NAD 83 (1996 Adjustment)
N-172329.049
E-462817.214
- 2004 MN/DOT
County Coordinates obtained by GPS
NAD 83 (1996 Adjustment)
N-172328.541
E-462817.370
- 2008 Samuel DeLeo, LS 40341, found a cast iron monument at the approximate centerline of roads east/west/south. Distances to the NE and SE corners were not measured at this time. New reference ties were set and recorded. County Coordinates were obtained.
County Coordinates obtained by GPS
NAD 83 (1996 Adjustment)
N-172328.513
E-462817.509

271521

OFFICE OF
BENTON COUNTY RECORDER
BENTON COUNTY, MN
CERTIFIED TO BE FILED
AND/OR RECORDED ON

JAN 30 4 03 PM '01

ALICE O. ENGELMEYER
COUNTY RECORDER

BY mn DEPUTY

CERTIFICATE OF LOCATION OF GOVERNMENT CORNER

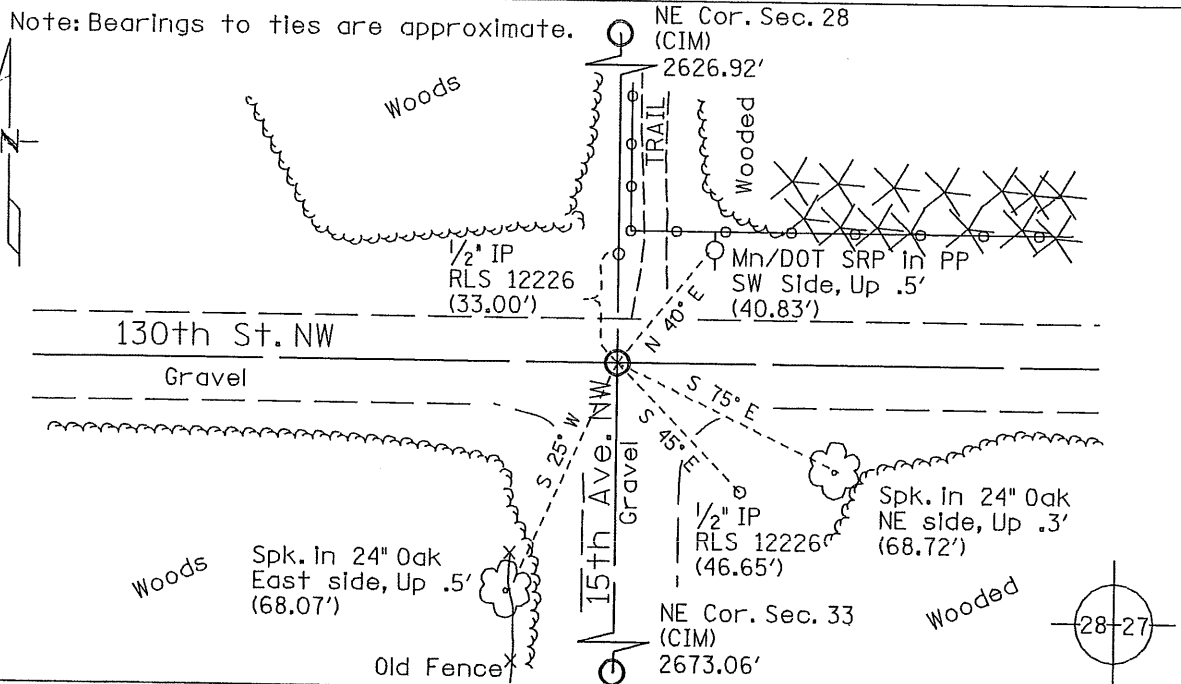
EAST QUARTER Corner of Section 28, Township 38 N, Range 31 W
4th Principal Meridian, State of Minnesota, County of BENTON

At the corner location shown on the sketch:

On 11/10/2000 found a STANDARD MN/DOT CAST IRON MONUMENT, DOWN 1'
DATE

left monument as found lowered monument removed monument (explain)

On _____ placed a _____
DATE



Statement of evidence for this corner location is on back of this page.

I hereby certify that this document was researched and prepared by me or under my direct supervision.

Signature Samuel J. DeLeo Date 1-15-01 License No. 40341

Title: Land Surveyor Professional Engineer County Surveyor County Engineer

Statement of Evidence

East Quarter Corner of Section 28, Twp. 38 N, Rng. 31 W
4th P.M., Benton County, Minnesota

Copies of notes from the original GLO survey, located in the office of the Benton County Highway Department, state that a wood post was set to mark the corner 40.00 chains from the NE Cor. of Sec. 33.

Three reference ties were made:

6" Bur Oak, S 50 Deg. E, 13 Links.

5" Bur oak, S 25 Deg. W, 4 Links.

50.50 Chains from the NE Cor. of Sec. 33 to Little Rock Creek, 5 Links wide.

October 1976; William Lunser, RLS #9394, established the location of the corner by evidence of the centerline of the roads to the west and south. . A 3/4" iron pipe was set and reference ties were recorded. A Certificate of Location of Government Corner was filed with the Benton County Recorder, Doc. # 147074.

September 1979; In a survey of M. Carley/ M. B. Lang, Job 80-1190 & 78-5192, page 44, dtd. 9/5/79, on file in the office of David Regan PLS, specify the corner as being marked by a "3/4" I M " .

October 1989; The Minnesota Department of Transportation set a cast iron monument over the 3/4" pipe set by Lunser. Revision notes were made on Lunser's 1976 certificate.

November 2000; Sam DeLeo, RLS #40341, found a standard Mn/DOT cast iron monument. New ties were recorded and a new Certificate of Location of Government Corner was made.

CERTIFICATE OF LOCATION OF GOVERNMENT CORNER

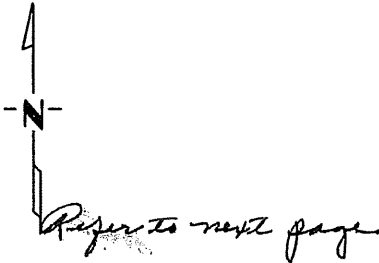
2 1/4 (restore) Corner of Section 28, Township 38, Range 31, _____ P.M.

STATE OF MINNESOTA, County of Benton

At the corner location shown on the sketch:

- On 1-16-1976 found a centerline of the road to the west & south
DATE
- left monument as found, lowered monument, removed monument (explain)
- On _____ placed a 3/4 iron pipe
DATE

SKETCH OF REFERENCE TIES



Statement of evidence relative to this corner location is on back of page.

I hereby certify that this document and the data contained herein was prepared by me or under my direct supervision.

William F. Lumsden 1-16-1976
SIGNATURE DATE

Registration No. 9394

- Land Surveyor, Professional Engineer
- County Surveyor, County Engineer

OFFICE OF THE REGISTER OF DEEDS
County of Benton

I hereby certify that this document was filed in the Reg. of Deeds office at 9 A.M. on the 20th day of December A.D., 1977

Register of Deeds T. G. Johnson
By County Recorder, Deputy

DOCUMENT NO. 147074

59-9

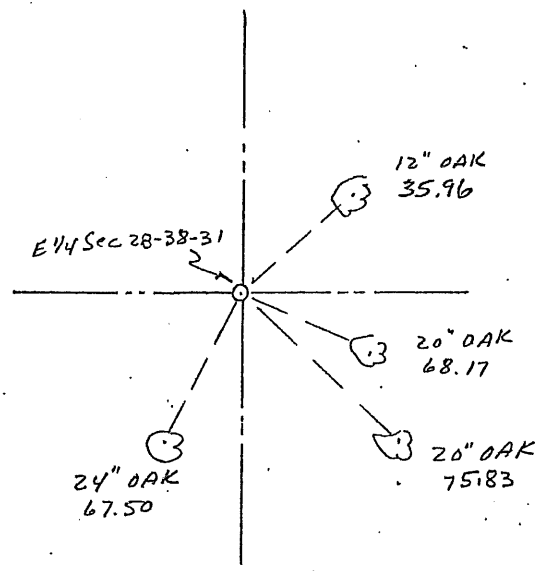
E 1/4 Sec 28-38-31

59-9
PO GATNIK

CERTIFICATE OF LOCATION OF GOVERNMENT CORNER

I hereby certify that on the 16 day of January, 1976
I did restore the E 1/4 corner of Section 28,
Twp. 38, Rg. 31, Benton County, Minnesota, which
was evidenced by centerline of the road to the west & south

I further certify that in order to perpetuate said corner I did
at the exact location thereof place a permanent marker consisting
of 3/4 iron pipe and that
I did establish witness or reference monuments as shown below:



147074

I hereby certify that the above is true and correct and that I am a registered Land Surveyor under the laws of the State of Minnesota.

William P. L...

Minn. Registration No. 9394

Office of the ~~Register~~ ^{County Recorder} of Deeds,
Benton County, Minn.

I hereby certify that the within instrument was filed for record in this office on the 20 day of December, 1977 at 9 A.M.

F. G. Johnson
~~Register of Deeds~~ ^{County Recorder}

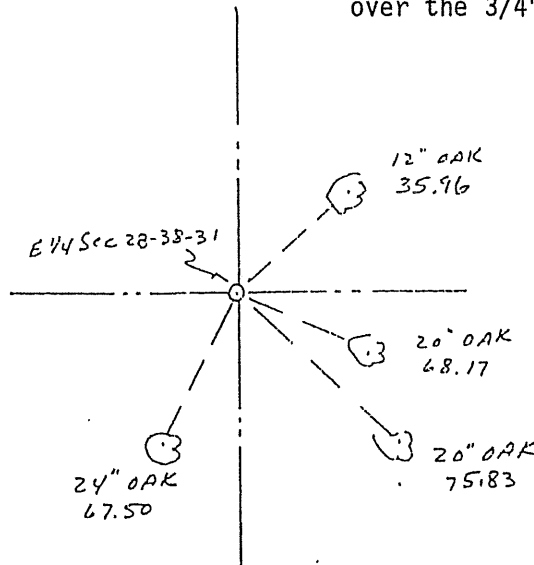
By _____ Deputy.

CERTIFICATE OF LOCATION OF GOVERNMENT CORNER

I hereby certify that on the 16 day of January, 1976
 I did restore the E $\frac{1}{2}$ corner of Section 28,
 Twp. 38, Rg. 31, Benton County, Minnesota, which
 was evidenced by centerline of the road to the west & south

I further certify that in order to perpetuate said corner I did
 at the exact location thereof place a permanent marker consisting
 of 3/4 iron pipe and that
 I did establish witness or reference monuments as shown below:

NOTE: Mn/DOT set a C.I. monument
 over the 3/4" Pipe 10/10/89



147074

I hereby certify that the
 above is true and correct
 and that I am a registered
 Land Surveyor under the laws
 of the State of Minnesota.

William F. Jones

Minn. Registration No. 9394

County Register of Deeds,
Benton County, Minn.

I hereby certify that the within
 instrument was filed for record
 in this office on the 20 day of
December, 1977 at 9 H.M.

F. A. Johnson
 Register of Deeds

By _____ Deputy.