

389401

Certified, Filed and or Recorded on
June 20, 2012 1:49 PM

BENTON COUNTY MINNESOTA
MARILYN J NOVAK
COUNTY RECORDER

By: *MJN*

G -- V -- I

FEE AMOUNT \$46.00

CERTIFICATE OF LOCATION OF GOVERNMENT CORNER

 EAST QUARTER Corner of Section 29 , Township 38 N , Range 31 W

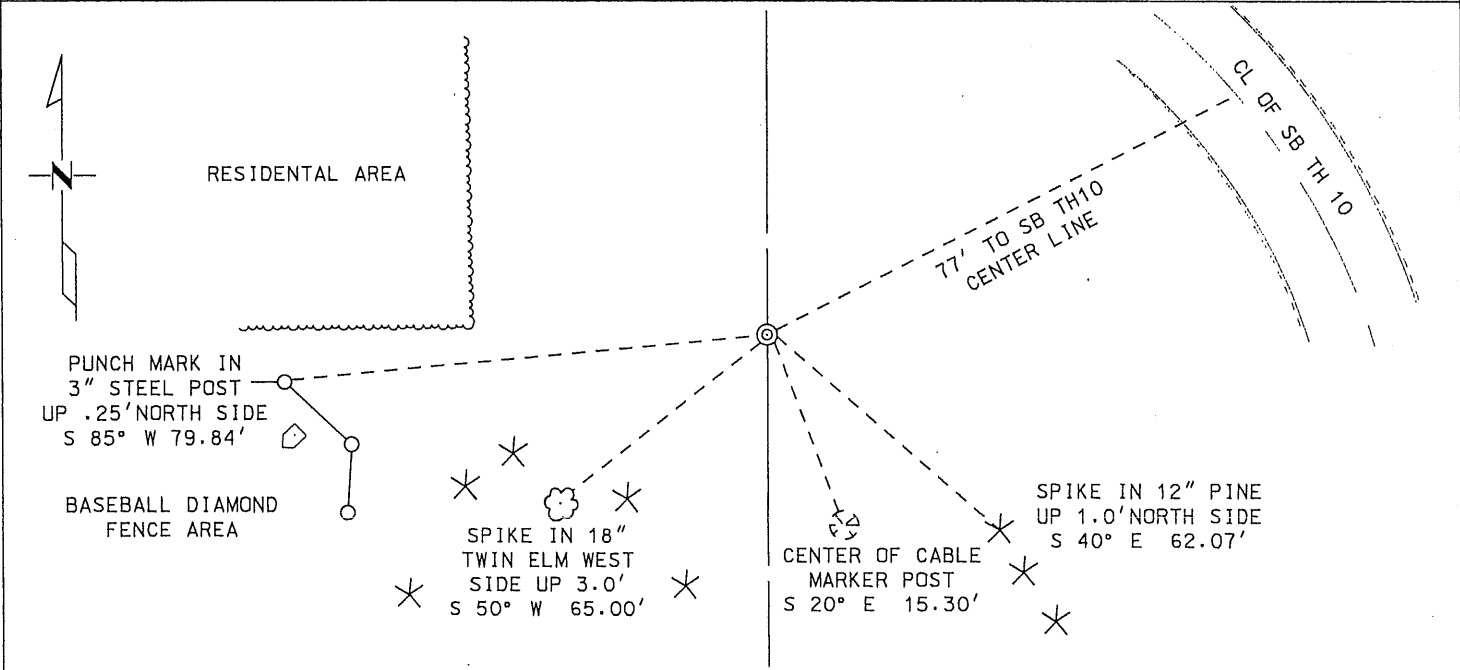
 4TH Principal Meridian, State of Minnesota, County of BENTON

At the corner location shown on the sketch:

On 3-5-2012 found a STANDARD BENTON COUNTY CAST IRON MONUMENT
DATE FLUSH WITH THE GROUND

left monument as found lowered monument removed monument (explain)

On _____ placed a _____
DATE



Statement of evidence for this corner location is on back of this page.

I hereby certify that this survey, plan, or report was prepared by me or under my direct supervision and that I am a duly Licensed Land Surveyor under the laws of the state of Minnesota.

Signature *Trevor L. Skeesick* Date 3-16-2012 License No. 46573
Trevor L. Skeesick MNDOT

Title: Land Surveyor Professional Engineer County Surveyor County Engineer

Statement of Evidence**East Quarter of Section 29, Township 38 North, Range 31 West, East Langola Township,
4th Principal Meridian, Benton County, Minnesota.**

- 1852 Original US General Land Office survey set a wood post in a mound with a pit 8 links east at the corner location
- 1969 Carley/Lang notes on file with David Regan shows corner marked by an iron monument.
- 1976 William Lunser, LS 9394, found ½" capped iron pipe RLS #855. He filed a Certificate of Location (#147070) and notes a distance of 2663.79 feet to the North East corner of Section 29 and a distance of 2662.80 feet to the North East corner of Section 32.
- 1979 Carley/Lang notes specify corner being marked by a ¾" iron monument #855, Mr. Carley's license number.
- 1983 William Lunser, LS 9394 replaced the ½" capped iron pipe RLS#855 with a Cast Iron Monument. He filed a Certificate of Location (#173418)
- 1998 MN/DOT Right OF Way Plat No. 05-1 shows a Cast Iron Monument at corner location.
- 2000 Samuel DeLeo, LS 40341, found a cast iron monument He filed a Certificate of Location (271524) and notes a distance of 2663.78 feet to the North East corner Sec 29 (CIM) and a distance of 2662.55 feet to the North East Corner Section 32 (CIM).
- 2004 Surveying & Engineering Professionals, Inc. found a CIM at the corner location.
Distances checked with 2000 statement of evidence record.
County Coordinates obtained by GPS.
NAD 83 (1996 Adjustment)
N-172242.745
E-4457502.133
- 2012 On April 5th, 2012, The Minnesota Department of Transportation found a Standard Benton County Cast Iron Monument at the East Quarter Corner of Section 29. Four existing ties were found and verified with the Certificate of Location Corner on file at the Benton County's Recorder's office (#271524). The Distance's measured to corresponding corners were checked and verified, along with the coordinates as recorded on the previous statement of evidence in 2004. No witnesses could provide information contrary to the location of the Cast Iron Monument.

The Minnesota Department of Transportation accepts the Cast Iron Monument as the correct location of the East Quarter Corner of Section 29.

For details and survey analysis, contact the Minnesota Department of Transportation District Surveys Office in Baxter, Minnesota

271524

OFFICE OF
BENTON COUNTY RECORDER
BENTON COUNTY, MN
CERTIFIED TO BE FILED
AND/OR RECORDED ON

JAN 30 4 03 PM '01

ALICE G. ENDELMEYER
COUNTY RECORDER

BY mm DEPUTY mm

CERTIFICATE OF LOCATION OF GOVERNMENT CORNER

EAST QUARTER Corner of Section 29, Township 38 N, Range 31 W
4th Principal Meridian, State of Minnesota, County of BENTON

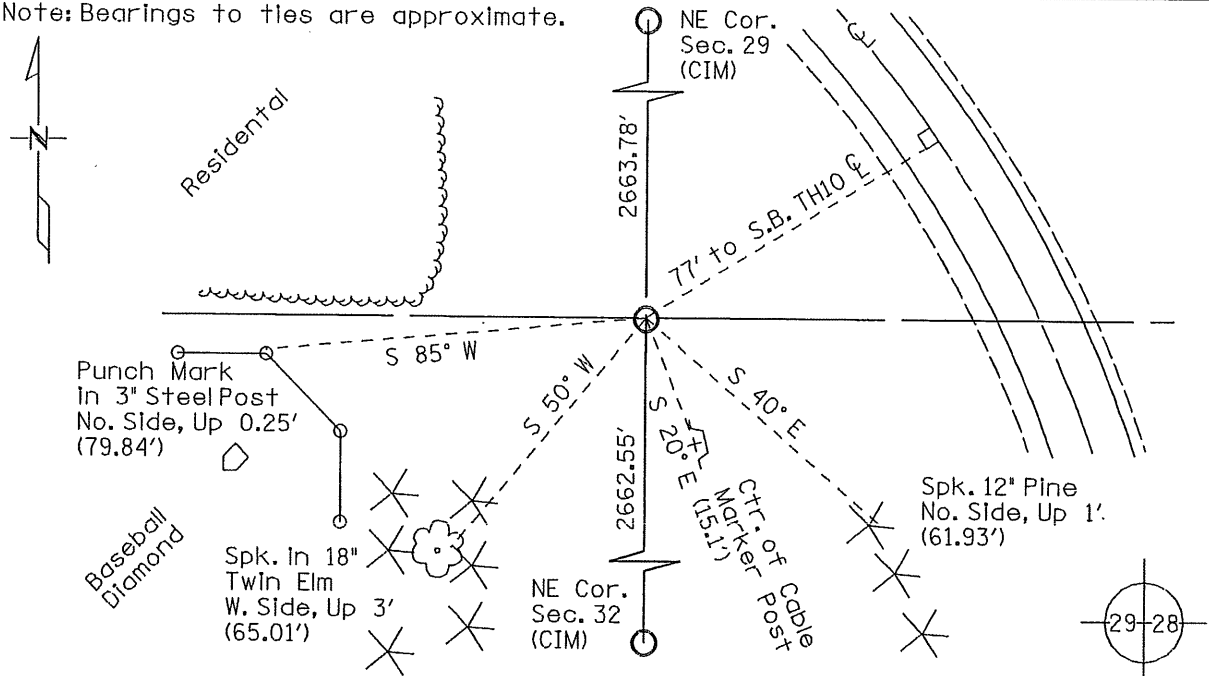
At the corner location shown on the sketch:

On 11/10/2000 found a STANDARD BENTON COUNTY CAST IRON MONUMENT, FLUSH
DATE

left monument as found lowered monument removed monument (explain)

On _____ placed a _____
DATE

Note: Bearings to ties are approximate.



Statement of evidence for this corner location is on back of this page.

I hereby certify that this document was researched and prepared by me or under my direct supervision.

Signature Samuel J. DeLeo Date 1-15-2001 License No. 40341

Title: Land Surveyor Professional Engineer County Surveyor County Engineer

Statement of Evidence

East Quarter Corner of Section 29, Twp. 38 N, Rng. 31 W
4th P.M., Benton County, Minnesota

Copies of notes from the original GLO survey, located in the office of the Benton County Highway Department, state that a wood post in a mound was set to mark the corner with a pit 8 links East.

July 1969; in a survey of M. Carley/ M. B. Lang, Job 69-214, page 130, dtd. 7/7/69, on file in the office of David Regan PLS, specify the corner as being marked by an "I. M." and being replaced. The type of monument used to replace the "I. M." is not specified.

October 1976; William Lunser, RLS #9394, found a 1/2" iron pipe (RLS #855). Reference ties were recorded and a Certificate of Location of Government Corner was made, dated 10/19/76.

September 1979; In a survey of M. Carley/ M. B. Lang, Job 80-1190 & 78-5192, page 44, dtd. 9/5/79, on file in the office of David Regan PLS, specify the corner as being marked by a 3/4" I M #855. This is the registration number of M. Carley.

May 1983; Lunser's 1976 certificate was updated by placing a Benton County cast iron monument in place of the 1/2" iron pipe. Revision notes were made on Lunser's 1976 certificate. Certificate is on file at the Benton County Highway Department.

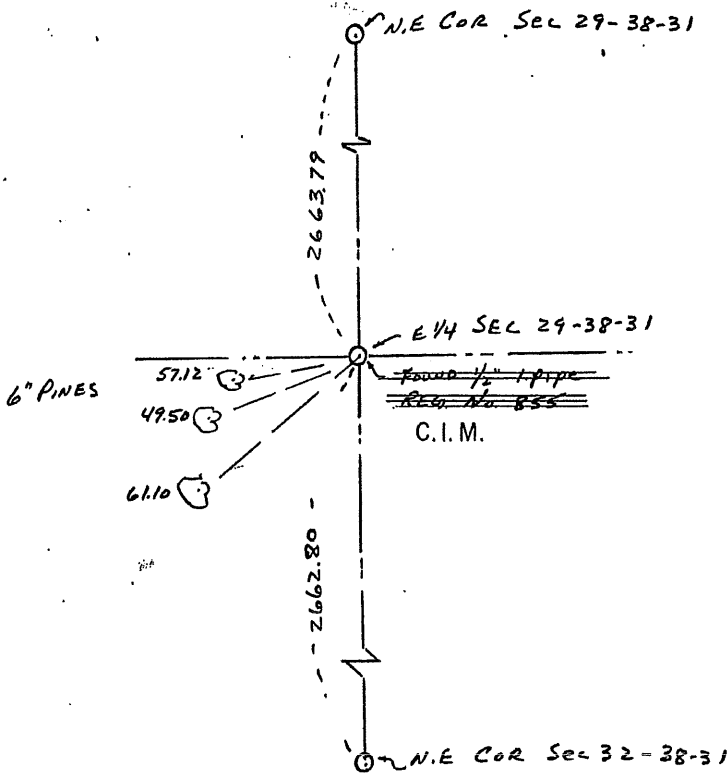
A Minnesota Department of Highways R/W map labeled "Belt Line in Rice", date unknown, also shows a symbol for the corner and distances from the alignment of TH 10 to the corner. It doesn't specify a monument type for the corner. This map is on file at the Minnesota Department of Transportation Office in Baxter and in St. Cloud.

November 2000; Sam DeLeo, RLS #40341, found a Benton County cast iron monument. New ties were recorded and a new Certificate of Location of Government Corner was made.

CERTIFICATE OF LOCATION OF GOVERNMENT CORNER

I hereby certify that on the 19 day of Oct., 19 76
 I did find the E 1/4 corner of Section 29,
 Twp. 38, Rg. 31, Benton County, Minnesota, which
 was evidenced by 1/2" iron pipe

I further certify that in order to perpetuate said corner I did
 at the exact location thereof place a permanent marker consisting
 of ~~left as it was~~ Benton County Cast Iron Monument and that
 I did establish witness or reference monuments as shown below:



173418

I hereby certify that the
 above is true and correct
 and that I am a registered
 Land Surveyor under the laws
 of the State of Minnesota.

William R. Jensen

Minn. Registration No. 9394
 Revised 5-17-1983

Office of the Register of Deeds,
Benton County, Minn.

I hereby certify that the within
 instrument was filed for record
 in this office on the 16th day of
May, 1985 at 11:00

Alice C. Engelmeier
 Register of Deeds

By _____ Deputy.

173418-2077-100
 28
 1985
 29-38-31

CERTIFICATE OF LOCATION OF GOVERNMENT CORNER

2 1/4 Corner of Section 29, Township 38, Range 31, _____ P.M.

STATE OF MINNESOTA, County of Benton

At the corner location shown on the sketch:

- On _____ found a 1/2" iron pipe
DATE
- left monument as found, lowered monument, removed monument (explain)
- On 10-19-1976 placed a left as it was
DATE

SKETCH OF REFERENCE TIES

Refer to next page

Statement of evidence relative to this corner location is on back of page.

I hereby certify that this document and the data contained herein was prepared by me or under my direct supervision.

William T. Lunsar 10-19-76
SIGNATURE DATE

Registration No. 2594

- Land Surveyor, Professional Engineer
- County Surveyor, County Engineer

OFFICE OF THE REGISTER OF DEEDS *County Recorder*
County of Benton

I hereby certify that this document was filed in the Reg. of Deeds office at 10:19 A. .M. on the 20th day of December A.D., 1977

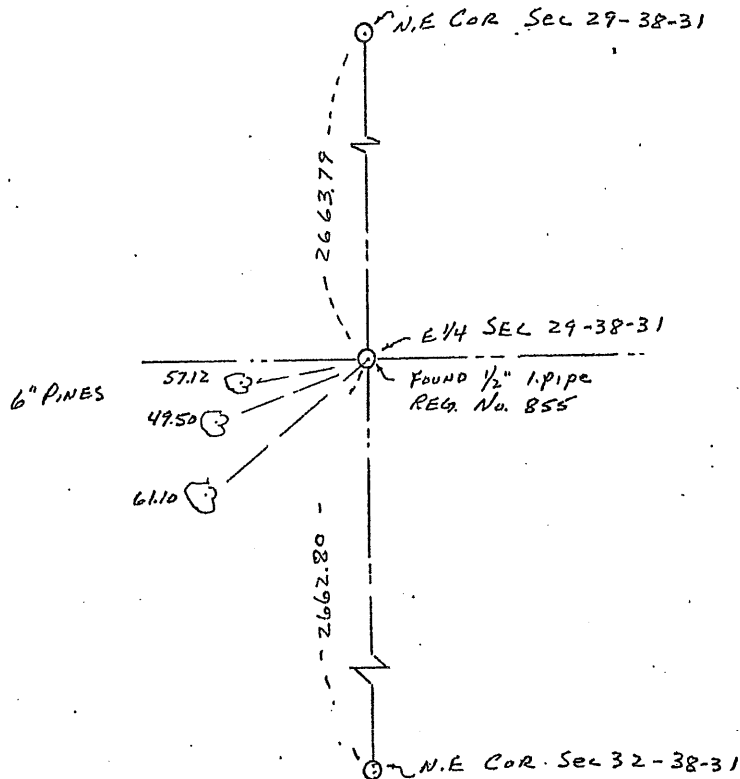
Register of Deeds W. Johnson
By County Recorder, Deputy

DOCUMENT NO. 147070

CERTIFICATE OF LOCATION OF GOVERNMENT CORNER

I hereby certify that on the 19 day of Oct., 19 76
 I did find the E 1/4 corner of Section 29,
 Twp. 38, Rg. 31, Benton County, Minnesota, which
 was evidenced by 1/2" iron pipe

I further certify that in order to perpetuate said corner I did
 at the exact location thereof place a permanent marker consisting
 of left as it was and that
 I did establish witness or reference monuments as shown below:



I hereby certify that the
 above is true and correct
 and that I am a registered
 Land Surveyor under the laws
 of the State of Minnesota.

William R. Jensen

Minn. Registration No. 9394

147070
 County Recorder
 Office of the Register of Deeds,
Benton County, Minn.

I hereby certify that the within
 instrument was filed for record
 in this office on the 20 day of
December, 1977 at 9 A.M.

F. G. Johnson
 Register of Deeds County Recorder

By _____ Deputy.