

389404

Certified, Filed and or Recorded on
June 20, 2012 1:49 PM

BENTON COUNTY MINNESOTA
MARILYN J NOVAK
COUNTY RECORDER

By: BW

G - V - I

FEE AMOUNT \$46.00

CERTIFICATE OF LOCATION OF GOVERNMENT CORNER

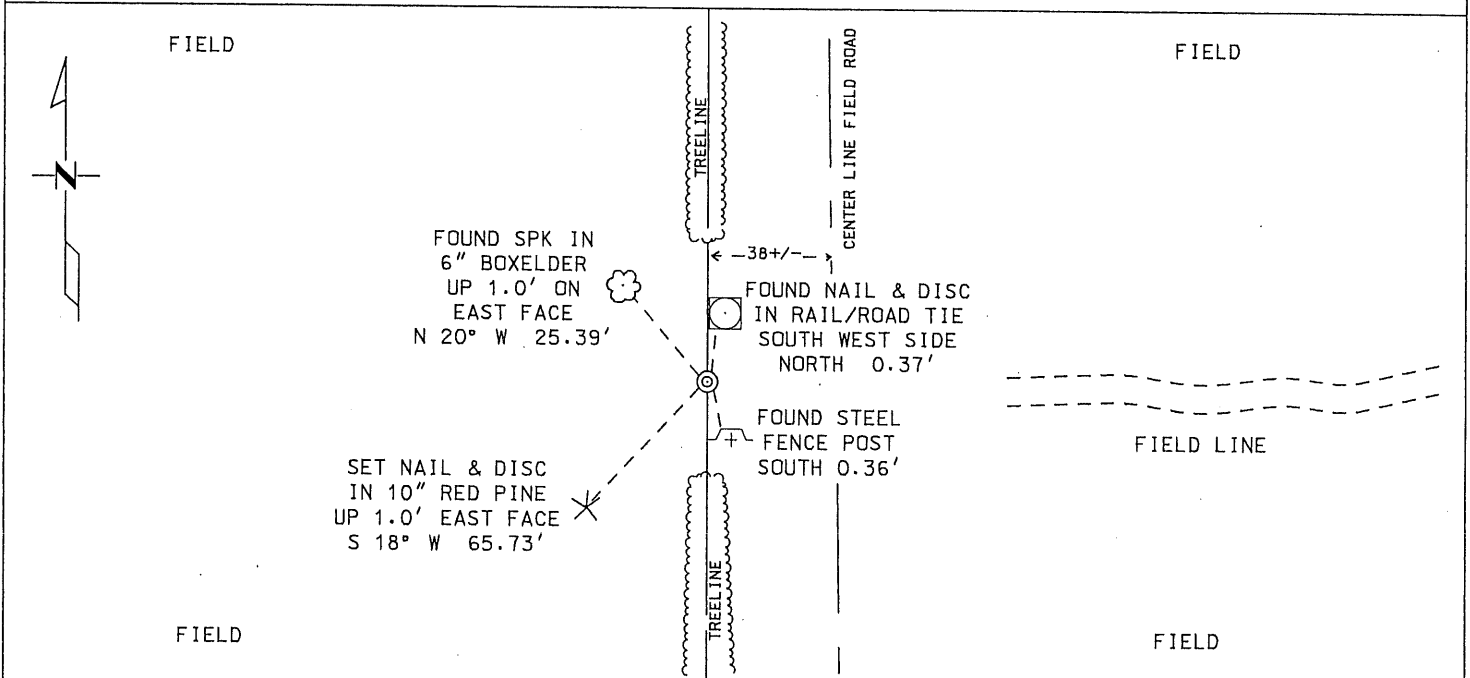
EAST QUARTER Corner of Section 30, Township 38 N, Range 31 W
4 TH Principal Meridian, State of Minnesota, County of BENTON

At the corner location shown on the sketch:

On 3-07-2012 found a 1 INCH OPEN IRON PIPE IN CONCRETE
DATE

left monument as found lowered monument removed monument (explain)

On _____ placed a _____
DATE



Statement of evidence for this corner location is on back of this page.

I hereby certify that this survey, plan, or report was prepared by me or under my direct supervision and that I am a duly Licensed Land Surveyor under the laws of the state of Minnesota.

Signature Trevor L. Skeesick Date 3-16-2012 License No. 46573
Trevor L. Skeesick MNDOT

Title: Land Surveyor Professional Engineer County Surveyor County Engineer

Statement of Evidence**East Quarter Corner of Section 30, Township 38 North, Range 31 West, East Langola Township, 4th Principal Meridian, Benton County, Minnesota.**

- 1852 Original US General Land Office survey set a wood post in a mound with a pit 8 links south at the corner location.
- 1978 Ronald Engelmeyer, LS 13334, found a 1" iron pipe at the intersection of a tree line (running north and south) and a field line (from the east). He filed a Certificate of Location (#151566).
- 2002 No resurvey information was found on this corner in the Benton County records.
- 2004 Westwood Professional Services, Inc. found a 1" iron pipe at the corner location. Measurements were taken 2670.96 feet to the SE corner and 2655.27 feet to the NE corner. Pipe found is 7.9 feet north and 5.2 feet east of the lost position. County Coordinates obtained by GPS.
NAD 83 (1996 Adjustment)
N-172204.381
E-452129.322
- 2004 MN/DOT
County Coordinates obtained by GPS
NAD 83 (1996 Adjustment)
N-172204.377
E-452129.333
- 2008 Westwood Professional Services, Inc. found a 1" iron pipe at the corner location. 1" iron pipe is accepted as marking the obliterated corner position. County Coordinates Obtained by GPS coincide with 2004 MN/DOT position.
- 2012 On April 7th, 2012, The Minnesota Department of Transportation found a 1" open pipe in concrete at the East Quarter Corner of Section 30. Three existing ties were found and verified with the Certificate of Location Corner on file at the Benton County's Recorder's office (#361336). One additional reference tie was made and recorded. The Coordinates were checked and verified with the previous statement of evidence in 2004 and 2008. No witnesses could provide information contrary to the location of the 1" open pipe in concrete.

The Minnesota Department of Transportation accepts the 1" open pipe in concrete as the correct location of the East Quarter Corner of Section 30.

For details and survey analysis, contact the Minnesota Department of Transportation District Surveys Office in Baxter, Minnesota

A 361336

Certified, Filed and or Recorded on
Oct. 31, 2008 AT 08:22AM

Signed: MJ
MARILYN J NOVAK G V
BENTON COUNTY MINNESOTA

MARILYN J NOVAK
COUNTY RECORDER

CERTIFICATE OF LOCATION OF GOVERNMENT CORNER

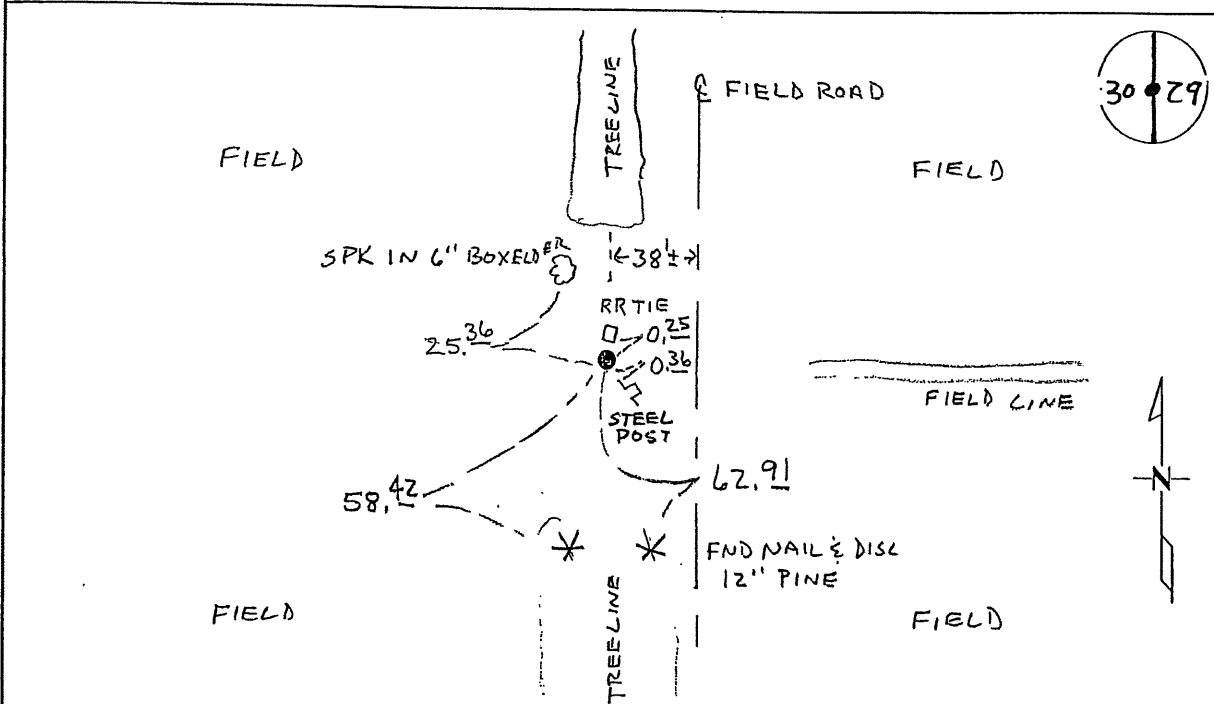
EAST QUARTER Corner of Section 30, Township 38, Range 31
4TH Principal Meridian, State of Minnesota, County of Benton

At the corner location shown on the sketch:

On 8-27-08 found a 1" OPEN I.P. IN CON

left monument as found lowered monument removed monument (explain)

On _____ placed an _____



Statement of evidence for this corner location is on back of this page.

I hereby certify that this document was researched and prepared by me or under my direct supervision and that I am a licensed Land Surveyor under the laws of the State of Minnesota.

Signature Ch Hoagland
Deputy County Surveyor
License No. 43932

Date: 10/14/08

A 361336

Benton County Surveyor's Office
Chris Høglund, Deputy County Surveyor
Minnesota License No. 43932

Statement of Evidence:

D303

East Quarter Corner of Section 30, Township 38 North, Range 31 West, East Langola Township, 4th Principal Meridian, Benton County, Minnesota.

- 1852 Original US General Land Office survey set a wood post in a mound with a pit 8 links south at the corner location.
- 1978 Ronald Engelmeyer, LS 13334, found a 1" iron pipe at the intersection of a tree line (running north and south) and a field line (from the east). He filed a Certificate of Location (#151566).
- 2002 No resurvey information was found on this corner in the Benton County records.
- 2004 Westwood Professional Services, Inc. found a 1" iron pipe at the corner location. Measured 2670.96 feet to the SE corner and 2655.27 feet to the NE corner. Pipe found is 7.9 feet north and 5.2 feet east of the lost position.
County Coordinates obtained by GPS.
NAD 83 (1996 Adjustment)
N-172204.381
E-452129.322
- 2004 MN/DOT
County Coordinates obtained by GPS
NAD 83 (1996 Adjustment)
N-172204.377
E-452129.333
- 2008 Westwood Professional Services, Inc. found a 1" iron pipe at the corner location. 1" iron pipe is accepted as marking the obliterated corner position. County Coordinates Obtained by GPS coincide with 2004 MN/DOT position.

CERTIFICATE OF LOCATION OF GOVERNMENT CORNER

East Quarter _____ Corner of Section 30, Township 38, Range 31, _____ P.M.

STATE OF MINNESOTA, County of Benton

At the corner location shown on the sketch:

- On 8-1-78 I found a 1" iron pipe found in place
DATE
- left monument as found, lowered monument, removed monument (explain)
- On _____ placed a left as it was
DATE

SKETCH OF REFERENCE TIES



Refer to next page

Statement of evidence relative to this corner location is on back of page.

I hereby certify that this document and the data contained herein was prepared by me or under my direct supervision.

Ronald Engelmeyer
SIGNATURE DATE

Registration No. 13334

- Land Surveyor, Professional Engineer
- County Surveyor, County Engineer

#151566
County Recorder

OFFICE OF THE REGISTER OF DEEDS
County of Benton

I hereby certify that this document was filed in the Reg. of Deeds office at 9 A.M. on the 21 day of February A.D., 19 79

Register of Deeds F. A. Johnson

By County Recorder, Deputy

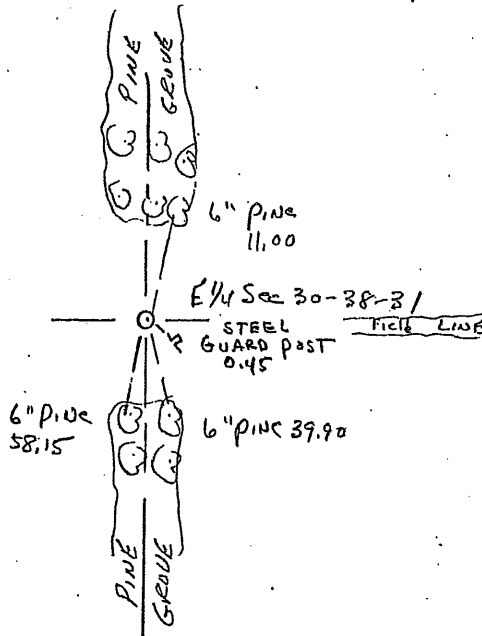
DOCUMENT NO. _____

76-19
159-78

CERTIFICATE OF LOCATION OF GOVERNMENT CORNER

I hereby certify that on the 1 day of August, 1978
I did FIND the EAST QUARTER corner of Section 30,
Twp. 32, Rg. 31, BENTON County, Minnesota, which
was evidenced by 1" IRON PIPE FOUND IN PLACE

I further certify that in order to perpetuate said corner I did
at the exact location thereof place a permanent marker consisting
of LEFT AS IT WAS and that
I did establish witness or reference monuments as shown below:



I hereby certify that the
above is true and correct
and that I am a registered
Land Surveyor under the laws
of the State of Minnesota.

[Signature]
Minn. Registration No. 13334

151566

County Recorder
Office of the ~~Register of Deeds~~,
Benton County, Minn.

I hereby certify that the within
instrument was filed for record
in this office on the 21 day of
February, 1979. 9 A.M.

F.A. Johnson
Register of ~~Deeds~~ County Recorder
By _____ Deputy.