

428602

Certified, Filed and or Recorded on
April 03, 2018 1:30 PM

BENTON COUNTY MINNESOTA
CHERYL L. KANTOR
COUNTY RECORDER

By: LS

6 - V - I

CERTIFICATE OF LOCATION OF GOVERNMENT CORNER

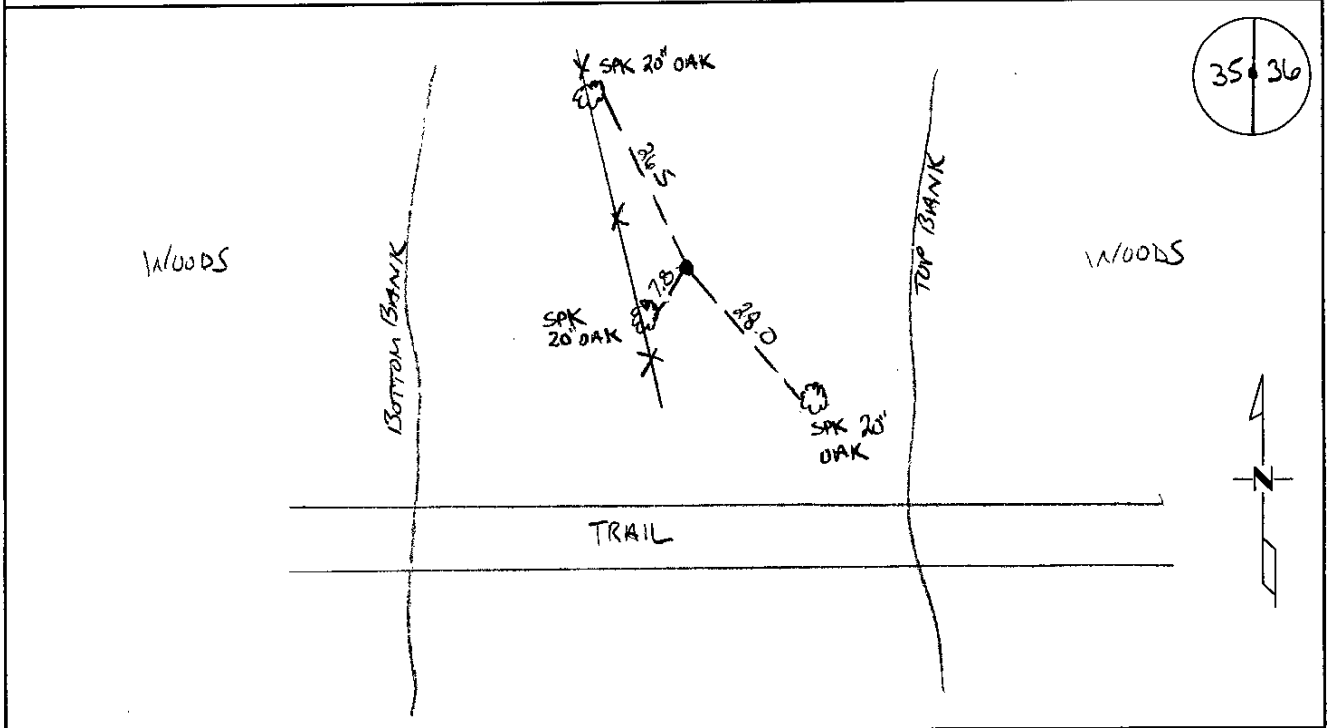
EAST QUARTER Corner of Section 35, Township 38, Range 31
4TH Principal Meridian, State of Minnesota, County of Benton

At the corner location shown on the sketch:

On 03/05/2014 found a 1/2 OPEN PIPE

left monument as found lowered monument removed monument (explain)

On _____ placed an _____



Statement of evidence for this corner location is on back of this page.

I hereby certify that this survey, plan, or report was prepared by me or under my direct supervision and that I am a duly Licensed Land Surveyor under the laws of the state of Minnesota.

Signature Jerome C. Wittstock
Jerome C. Wittstock, PS, CFedS, Benton County Surveyor
License No. 19552

Date: 4/2/2018

Benton County Surveyor's Office
 Jerome C. Wittstock, County Surveyor
 Minnesota License No. 19552

Statement of Evidence:

D353

East Quarter of Section 35, Township 38 North, Range 31 West, East Langola Township, 4th
 Principal Meridian, Benton County, Minnesota.

- 1852 Original US General Land Office survey set a wood post at this location and bearing trees were recorded.
- | | | |
|-------------|--------|-----------|
| 10" Bur Oak | S 41 W | 180 links |
| 12" Bur Oak | S 17 E | 182 links |
- 1978 Ronald Engelmayer, LS 13334, found a 1 1/2" iron pipe 15 feet east of the bottom of a bank. He filed a Certificate of Location (#151571). He notes a distance of 2624.10 feet to the NE Corner Sec 35 and a distance of 2618.34 feet to the SE Corner Sec 35.
- 1923 Samuel S. Chute surveyed land owned by the Erdmans
- 1934 M. B. Lang performed a survey on land owned by the Erdmans as part of a Registration Proceedings setting Judicial Landmarks.
- 2002 No resurvey information was found on this corner in the Benton County records. Westwood Professional Services, Inc. found a 1 1/2" iron pipe which fit the ties from 1978 certificate.
 County Coordinates Obtained by side-tie from GPS points:
 NAD 83 (1996 Adjustment)
 N-167012.120
 E-473578.670
- 2009 Research was performed in District Court. District Court File No. 5310 was found at the State Historical Society and contained surveys from Samuel S. Chute dated 1923 and M.B. Lang dated July 1934. The surveys were completed as part of a Torrens Registration Proceedings in connection with flowage rights from the Mississippi River dam at Sartell. The 1934 survey shows an I.M. at this corner location and other locations as well. The position appears to be set lost-north based on the distances shown. The basis of the east-west position could be developed from the survey information.
- 2014 The Benton County Surveyor's found the 1 1/2" iron pipe and verified the 2002 coordinates. The iron pipe is similar to other monuments found from the 1934 survey. The 10" black oak bearing tree called for in the 1934 survey was identified and is now a 20" black oak as shown on the attached graphic. The found iron pipe measures 2618.2 to the southeast corner and 2624.14 to the northeast corners of Section 35. The 1934 resurvey provides 1310-foot quarter mile distances indicating 2620-foot half mile distances. There is a 2 degree angle point at this corner location. The iron pipe is accepted as marking the corner position.

CERTIFICATE OF LOCATION OF GOVERNMENT CORNER

East Quarter _____ Corner of Section 35, Township 38, Range 31, 4th P.M.

STATE OF MINNESOTA, County of Benton

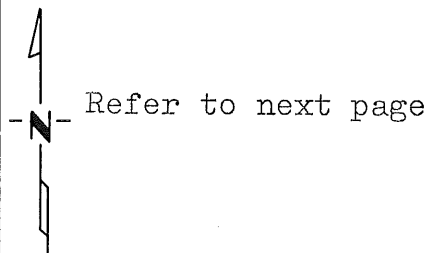
At the corner location shown on the sketch:

On 3-6-78 found a 1½" Iron pipe in place
DATE

left monument as found, lowered monument, removed monument (explain)

On _____ placed a left as it was
DATE

SKETCH OF REFERENCE TIES



Statement of evidence relative to this corner location is on back of page.

I hereby certify that this document and the data contained herein was prepared by me or under my direct supervision.

Ronald Engelmeyer

SIGNATURE 13334 DATE

Registration No. _____
 Land Surveyor, Professional Engineer
 County Surveyor, County Engineer

County Recorder

OFFICE OF THE REGISTER OF DEEDS
County of Benton

I hereby certify that this document was filed in the Reg. of Deeds office at 9 A.M. on the 21st day of February A.D., 19 79

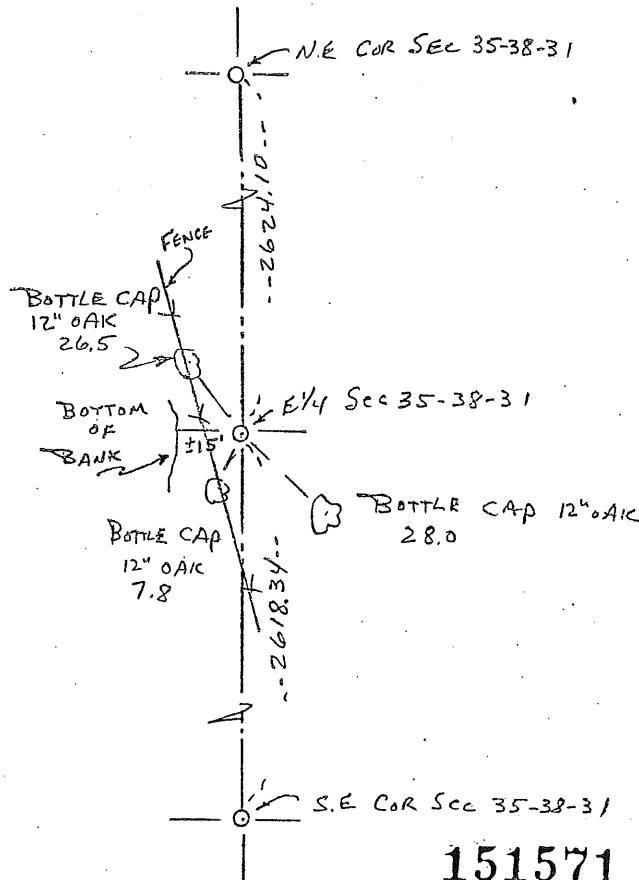
Register of Deeds F. A. Johnson
By _____, Deputy

DOCUMENT NO. 151571

CERTIFICATE OF LOCATION OF GOVERNMENT CORNER

I hereby certify that on the 6th day of MARCH, 1978
 I did Find the EAST QUARTER corner of Section 35,
 Twp. 38, Rg. 31, BENTON County, Minnesota, which
 was evidenced by 1/2" IRON PIPE FOUND IN PLACE

I further certify that in order to perpetuate said corner I did
 at the exact location thereof place a permanent marker consisting
 of LEFT AS IT WAS and that
 I did establish witness or reference monuments as shown below:



151571

I hereby certify that the above is true and correct and that I am a registered Land Surveyor under the laws of the State of Minnesota.

Ronald Engle

Minn. Registration No. 13334

County Recorder
 Office of the ~~Register of Deeds~~,
Benton County, Minn.

I hereby certify that the within instrument was filed for record in this office on the 21st day of February, 1977. 94-21.

F.A. Johnson
 Register of Deeds *County Recorder*

By _____ Deputy.