

428603

Certified, Filed and or Recorded on
April 03, 2018 1:30 PM

BENTON COUNTY MINNESOTA
CHEYL L. KANTOR
COUNTY RECORDER

By: BS

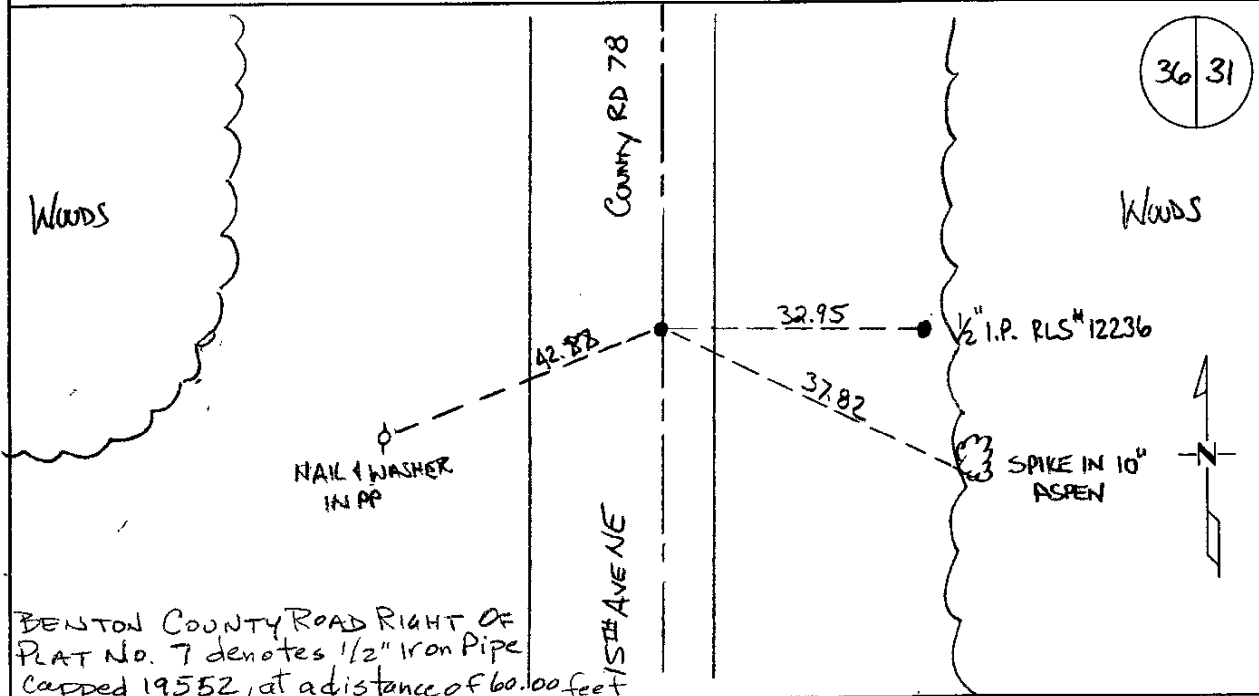
6 - v - 1

CERTIFICATE OF LOCATION OF GOVERNMENT CORNER

EAST QUARTER Corner of Section 36, Township 38, Range 31
4TH Principal Meridian, State of Minnesota, County of Benton

At the corner location shown on the sketch:

- On 6/27/14 found a RAILROAD SPIKE 2 FT EAST OF NORTH/SOUTH CENTERLINE AND ALSO FITS 1978 TIES
- left monument as found lowered monument removed monument (explain)
- On _____ placed an _____



BENTON COUNTY ROAD RIGHT OF PLAT No. 7 denotes 1/2" Iron Pipe capped 19552, at a distance of 60.00 feet east and west

Statement of evidence for this corner location is on back of this page.

I hereby certify that this document was researched and prepared by me or under my direct supervision and that I am a licensed Land Surveyor under the laws of the State of Minnesota.

Signature Jerome C. Wittstock
Benton County Surveyor
License No. 19552

Date: 3/29/2018

Benton County Surveyor's Office
 Jerome C. Wittstock, County Surveyor
 Minnesota License No. 19552

Statement of Evidence:**D363**

East Quarter Corner of Section 36, Township 38 North, Range 31 West, East Langola Township, 4th Principal Meridian, Benton County, Minnesota.

1849 Original US General Land Office survey set a wood post at this location and bearing trees were recorded.

10" Bur Oak S 71 E 140 links

12" Bur Oak N 79 W 107 links

1940 County Engineer's Notebook No. 133 contains a road survey for CAR No. 41 running south to north. No corner is shown. Stationing gives distance of 5366.5 feet for the east line of the section.

1972 County Highway notes call for a 3/4" pipe in the centerline of roads north/south and 13.0 feet north of a fence line west.

N&D 4" Poplar NE 42.42

N&D 4" Poplar SE 37.80

N&D PP SW 43.33

1978 Ronald Engelmeyer, LS 13334, found a 1/2" pipe and filed a Certificate of Location (#151570).

2002 Westwood Professional Services, Inc. found a RR spike at the intersection of the centerline of County Road 78 (running north and south) and a field line from the west, which fit the ties from 1978 certificate. Measured 2683.49 feet to the NE corner and 2680.15 feet to the SE corner, with RR spike being 1.67 feet south and 0.17 feet east of the lost position.

County Coordinates Obtained by GPS

NAD 83 (1996 Adjustment)

N-167000.071

E-478935.278

2009 The Benton County Surveyor's Office found the railroad spike mentioned in 2002 and verified the 2002 coordinates. The 1940 County Highway information does not mention any evidence of this corner position. An iron pipe capped 12236 was found 33.00 feet east of the railroad spike. The found railroad spike fits the lost position within 1.7 feet and since no other corner evidence was found is accepted as marking the corner position.

Coordinates Obtained by GPS

NAD 83 (1996 Adjustment):

N- 167000.071

E- 478935.278

CERTIFICATE OF LOCATION OF GOVERNMENT CORNER

I did find East Quarter Corner of Section 36, Township 38, Range 31, 4th P.M.

STATE OF MINNESOTA, County of Benton

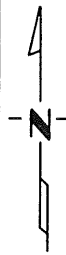
At the corner location shown on the sketch:

On 3-6-78 found a 1/2" iron pipe
DATE left as it was

left monument as found, lowered monument, removed monument (explain)

On _____ placed a _____
DATE

SKETCH OF REFERENCE TIES

 Refer to next page

Statement of evidence relative to this corner location is on back of page.

I hereby certify that this document and the data contained herein was prepared by me or under my direct supervision.

Ronald Engelmeyer
SIGNATURE DATE

Registration No. 13334

Land Surveyor, Professional Engineer

County Surveyor, County Engineer

~~County Recorder~~

OFFICE OF THE REGISTER OF DEEDS
County of Benton

I hereby certify that this document was filed in the Reg. of Deeds office at _____ A.M. on the 21st day of February A.D., 19 79

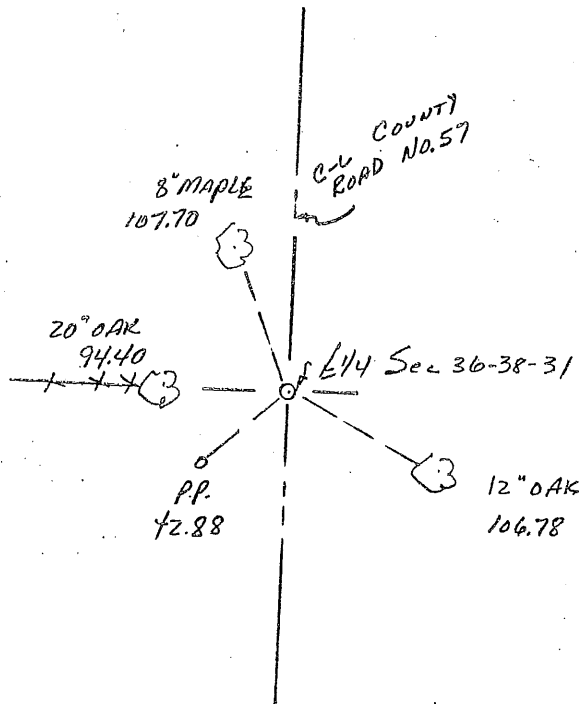
Register of Deeds F. A. Johnson
By _____, Deputy

DOCUMENT NO. 151570

CERTIFICATE OF LOCATION OF GOVERNMENT CORNER

I hereby certify that on the 6th day of March, 1978
I did find the EAST QUARTER corner of Section 36,
Twp. 38, Rg. 31, BENTON COUNTY County, Minnesota, which
was evidenced by 1/2" IRON PIPE

I further certify that in order to perpetuate said corner I did
at the exact location thereof place a permanent marker consisting
of LEFT AS IT WAS and that
I did establish witness or reference monuments as shown below:



I hereby certify that the
above is true and correct
and that I am a registered
Land Surveyor under the laws
of the State of Minnesota.

[Signature]
Minn. Registration No. 13334

151570

County Recorder
Office of the ~~Register of Deeds~~,
Benton County, Minn.

I hereby certify that the within
instrument was filed for record
in this office on the 21st day of
February, 1979. 9 a.m.

F.A. Johnson
~~Register of Deeds~~ County Recorder
By _____ Deputy.