

A 372583

Certified, Filed and or Recorded on
Mar. 02, 2010 AT 03:33PM

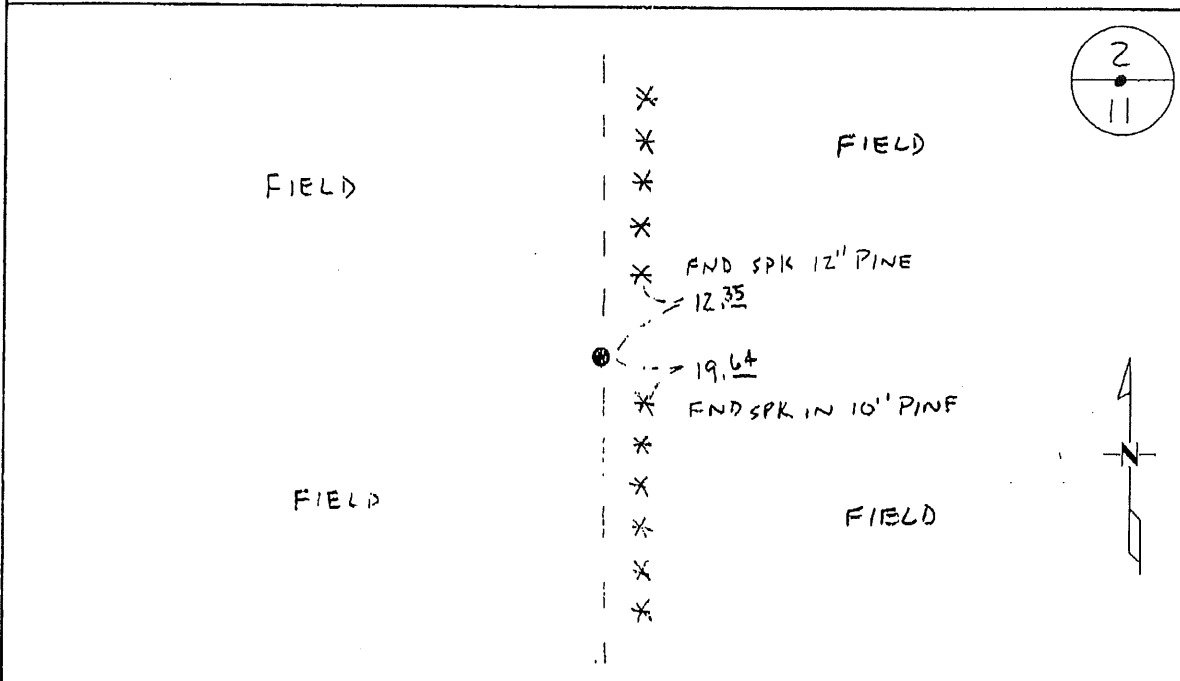
Signed: BW
MARILYN J NOVAK 6 V 1
BENTON COUNTY MINNESOTA
MARILYN J NOVAK
COUNTY RECORDER

CERTIFICATE OF LOCATION OF GOVERNMENT CORNER

NORTH QUARTER Corner of Section 11, Township 38, Range 31
4TH Principal Meridian, State of Minnesota, County of Benton

At the corner location shown on the sketch:

- On 8-11-08 found a CAST IRON MON
- left monument as found lowered monument removed monument (explain)
- On _____ placed an _____



Statement of evidence for this corner location is on back of this page.

I hereby certify that this document was researched and prepared by me or under my direct supervision and that I am a licensed Land Surveyor under the laws of the State of Minnesota.

Signature [Handwritten Signature]
Deputy County Surveyor
License No. 43932

Date: 11/20/09

A 372583

Benton County Surveyor's Office
Chris Hogleund, Deputy County Surveyor
Minnesota License No. 43932

Statement of Evidence:

D111

North Quarter Corner of Section 11, Township 38 North, Range 31 West, East Langola Township, 4th Principal Meridian, Benton County, Minnesota.

- 1852 Original US General Land Office survey set a wood post in a mound at the corner with a pit 8 links east.
- 1999 William Lunser, LS 9394, set a cast iron monument at the intersection of a field line north and a fence line east/south. He filed a Certificate of Location (#262731) and notes a distance of 5312.03 feet to the North ¼ corner Sec 14.
- 2002 No resurvey information was found on this corner in the Benton County records.
- 2008 Westwood Professional Services, Inc. found a cast iron monument at the intersection of field and fence remnants north and fences east and south. Measured 5311.71 feet to the N1/4 of Section 14 which is consistent with 1999 Lunser info. Cast iron monument is accepted as marking the obliterated position for this corner.
County Coordinates obtained by GPS.
NAD 83 (1996 Adjustment)
N- 190934.979
E- 470456.259

10/13/2009

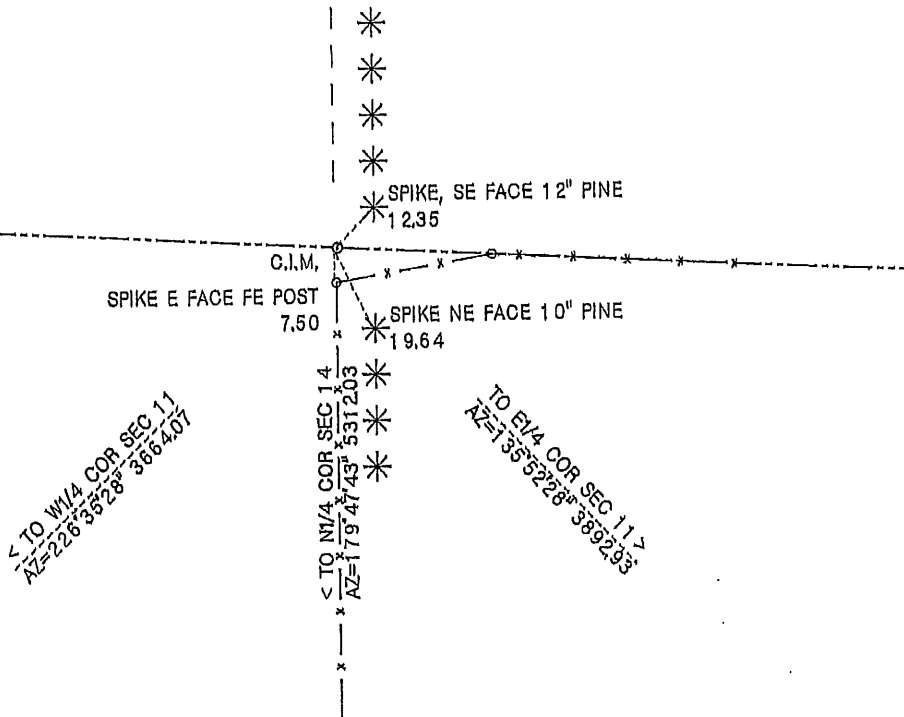
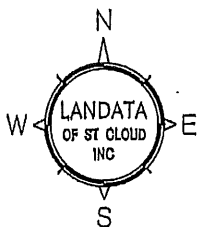
PAGE 2 OF 2

CERTIFICATE OF LOCATION OF GOVERNMENT CORNER

NORTH QUARTER corner of Section 11, Township 38, Range 31, 4th P.M.
Benton County, Minnesota.

On Mar 24, 1999, A Benton Co, Cast Iron Monument (C.I.M.) was placed at this location.

SKETCH OF REFERENCE TIES



Statement of evidence relative to this corner location on back of page

I hereby certify that this document and the data contained herein was prepared by me or under my direct supervision.

William F. Lunser 10/1/99
 William F. Lunser, L.S. Date
 Mn Reg No 9394

OFFICE OF THE COUNTY RECORDER
 Benton County, Minnesota
 I hereby certify that this document was filed in this office at ___:___ M. on the ___ day of _____, 19___.

County Recorder _____

By _____ Deputy


DOCUMENT NO. _____

STATEMENT OF EVIDENCE:

No records were found to indicate use or remonumentation of this corner after its original placement by the U.S. Government Survey.

A search of the area failed to uncover the marker. Occupation lines consist of field line north and fence lines south and east.

After comparing measured distances to those of the G.L.O. I consider this corner to be obliterated with the intersection of fence lines servings as its accessory.


William F. Lunser, L.S.

262731

OFFICE OF
BENTON COUNTY RECORDER
BENTON COUNTY, AR
CERTIFIED TO BE FILED
AND FOR REG. 100 GN

Dec 1 8 52 AM '99

ALICE G. CRISFELDER
COUNTY RECORDER

BY 