

Certified, Filed and or Recorded on
October 28, 2014 12:57 PM

BENTON COUNTY MINNESOTA
MARILYN J NOVAK
COUNTY RECORDER

By: OK

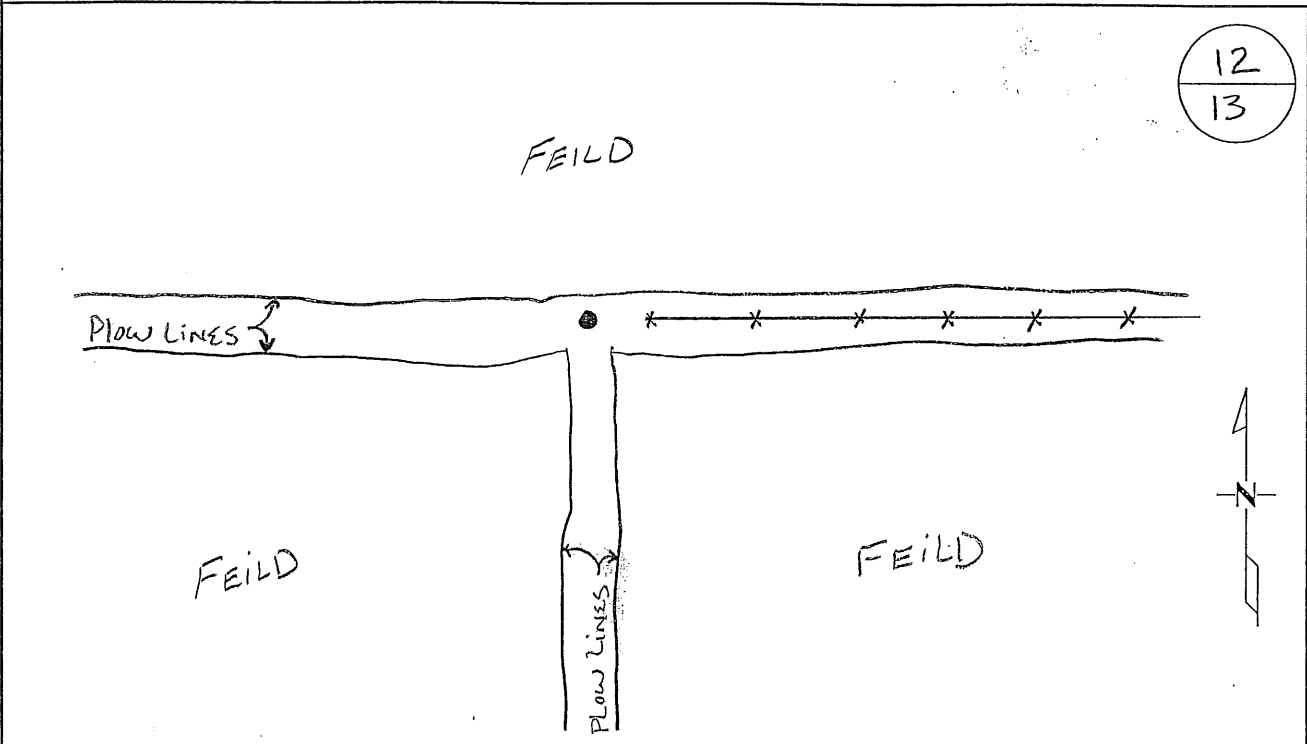
6 -- V -- 9

CERTIFICATE OF LOCATION OF GOVERNMENT CORNER

NORTH QUARTER Corner of Section 13, Township 38N, Range 31W
4TH Principal Meridian, State of Minnesota, County of Benton

At the corner location shown on the sketch:

- On _____ found a _____
- left monument as found lowered monument removed monument (explain)
- On 05/27/2011 placed an 1/2" X 1/4" IRON PIPE CAP # 19552



Statement of evidence for this corner location is on back of this page.

I hereby certify that this document was researched and prepared by me or under my direct supervision and that I am a licensed Land Surveyor under the laws of the State of Minnesota.

Signature Jerome C. Wittstock
Benton County Surveyor
License No. 19552

Date: 28 Oct. 2014

Benton County Surveyor's Office
Jerome C. Wittstock, County Surveyor
Minnesota License No. 19552

Statement of Evidence:

D131

North Quarter Corner of Section 13, Township 38 North, Range 31 West, East Langola Township, 4th Principal Meridian, Benton County, Minnesota.

1852 Original US General Land Office survey set a wood post in a mound with pit 8 links east at the corner location.

2002 No resurvey information was found on this corner in the Benton County records.

2011 The Benton County Surveyor's Office found an intersection of fences and flow lines east-west and south. The position falls 3 feet east and 2 feet north of the lost position and is considered to mark the obliterated corner position. A 1/2" x 14" iron pipe capped 19552 was set to mark the position.

GPS NAD 83 (1996 Adjustment) to a 1/2" iron pipe capped 19552:

N- 185680.0540'

E- 476015.1700'