

Certified, Filed and or Recorded on
November 19, 2014 8:57 AM

BENTON COUNTY MINNESOTA
MARILYN J NOVAK
COUNTY RECORDER

By: OK

6--4--1

CERTIFICATE OF LOCATION OF GOVERNMENT CORNER

NORTH QUARTER Corner of Section

17, Township

38, Range

31

4TH Principal Meridian, State of Minnesota, County of

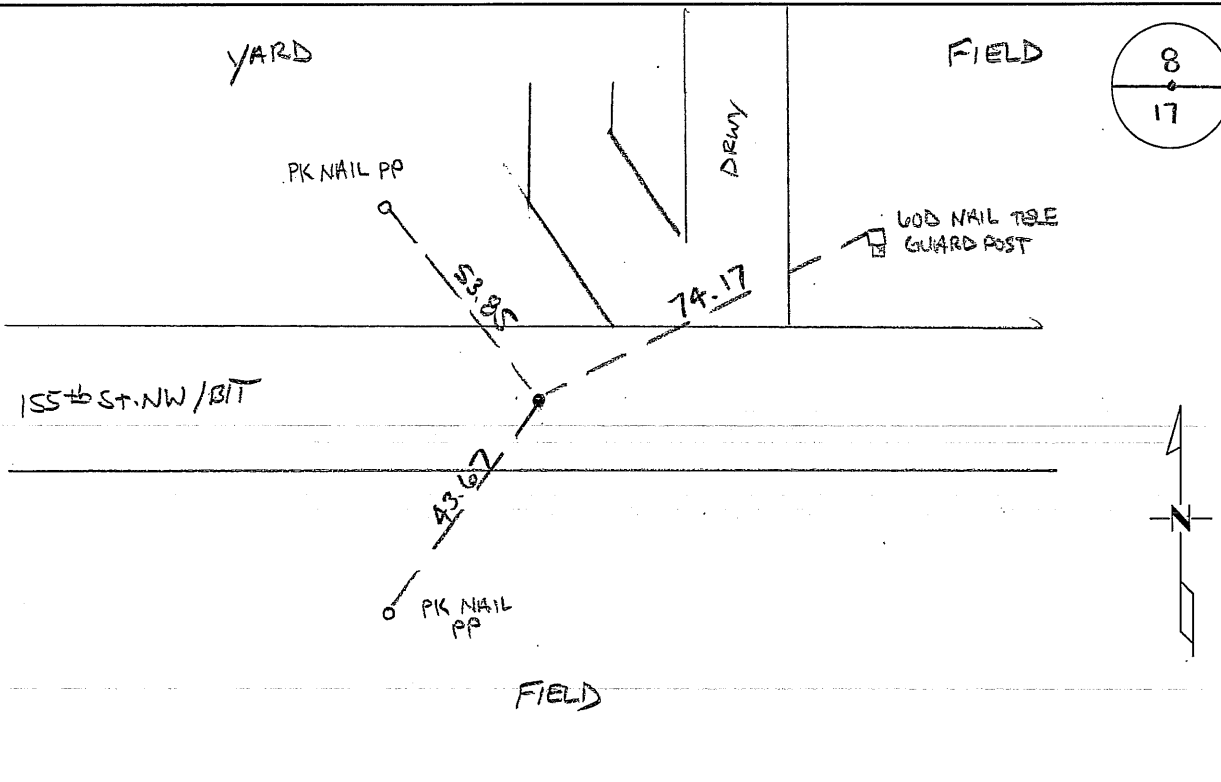
Benton

At the corner location shown on the sketch:

On 03/12/2014 found a CAST IRON MONUMENT DOWN 10'

left monument as found lowered monument removed monument (explain)

On _____ placed an _____



Statement of evidence for this corner location is on back of this page.

I hereby certify that this survey, plan, or report was prepared by me or under my direct supervision and that I am a duly Licensed Land Surveyor under the laws of the state of Minnesota.

Signature Jerome C. Wittstock

Date: 11/18/2014

Jerome C. Wittstock, PS, CFedS, Benton County Surveyor
License No. 19552

Benton County Surveyor's Office
 Jeromé C. Wittstock, County Surveyor
 Minnesota License No. 19552

Statement of Evidence:

D171

North Quarter of Section 17, Township 38 North, Range 31 West, East Langola
 Township, 4th Principal Meridian, Benton County, Minnesota.

1852 Original US General Land Office survey set a wood post at this location and bearing trees were recorded.

10" Bur Oak S 71 W 465 links

10" Bur Oak S 62 E 158 links

1988 Bruce Skipton, LS 17768, dug with a backhoe and found a stone with chiseled "X" down 3 feet below road surface. He set a cast iron monument over the stone and filed a Certificate of Location (Doc. #191340).

2003 6/25/03 Surveying & Engineering Professionals, Inc. found a cast iron monument in center of east-west road. Ties checked with 1988 Certificate. Measured 2689.12 feet to the NW corner and 2691.19 feet to the NE corner.

County Coordinates determined from SEPI traverse:

NAD 83 (1996 Adjustment)

N- 185539.940

E- 454583.147

2014 The Benton County Surveyor's Office found the cast iron monument down 1.0 feet in the east-west centerline of 155th Street NW. The found stone is accepted as marking the corner position and the 2003 coordinates were verified.

CERTIFICATE OF LOCATION OF GOVERNMENT CORNER

NORTH 1/4 Corner of Section 17, Township 38N, Range 31W, 4th P.M.

STATE OF MINNESOTA, County of BENTON

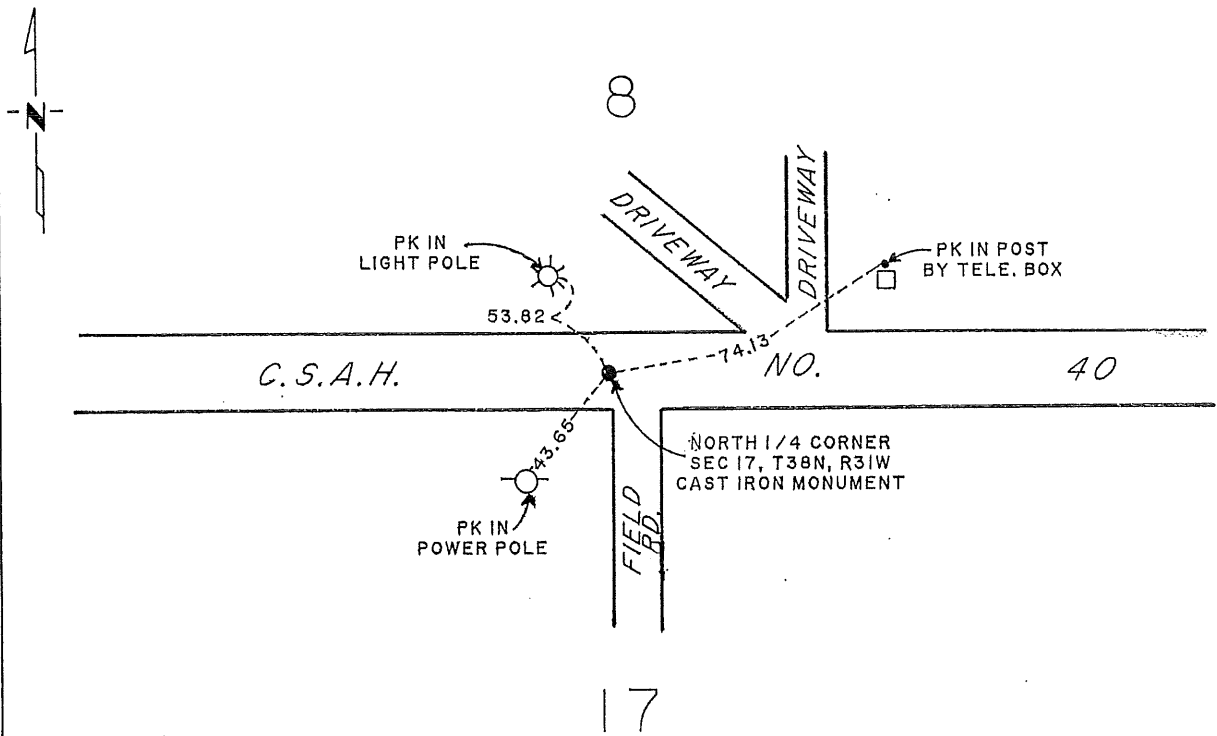
At the corner location shown on the sketch:

On 11 AUG 1988 found a STONE 3 FEET BELOW EXISTING GRAVEL ROAD SURFACE.
DATE

left monument as found, lowered monument, removed monument (explain)

On 11 AUG 1988 placed a CAST IRON MONUMENT
DATE

SKETCH OF REFERENCE TIES



Statement of evidence relative to this corner location is on back of page.

I hereby certify that this document and the data contained herein was prepared by me or under my direct supervision.

Bruce W. Skipton
SIGNATURE

1-3-89
DATE

Registration No. 17768

Land Surveyor, Professional Engineer

County Surveyor, County Engineer

OFFICE OF THE COUNTY RECORDER

County of _____

I hereby certify that this document was filed in the Co. Recorders office at _____ M. on the _____ day of _____ A.D., 19 _____

County Recorder _____

By _____, Deputy

DOCUMENT NO. _____

Statement of Evidence:

NORTH QUARTER CORNER, SECTION 17, T38N, R31W, 4TH P.M.

1. The original survey was accomplished in January 1852, by Edwin James Jr.
2. Benton county's old surveyor's books provided no information to re-locate said corner.
3. August 11, 1988, Paul E. Wellen & Associates Inc., dug with a backhoe and located a stone monument. We set a cast iron monument over said stone and made reference ties as indicated.

191340

OFFICE OF
BENTON COUNTY RECORDER
BENTON COUNTY, AR
CERTIFIED TO BE FILED
AND/OR RECORDED ON

JAN 20 9 16 AM '89

ALICE C. ENGELMEYER
COUNTY RECORDER

BY Al. DEPUTY