

Certified, Filed and or Recorded on
Oct. 31, 2008 AT 08:26AM

Signed: M
MARILYN J NOVAK 6 V
BENTON COUNTY MINNESOTA
MARILYN J NOVAK
COUNTY RECORDER

CERTIFICATE OF LOCATION OF GOVERNMENT CORNER

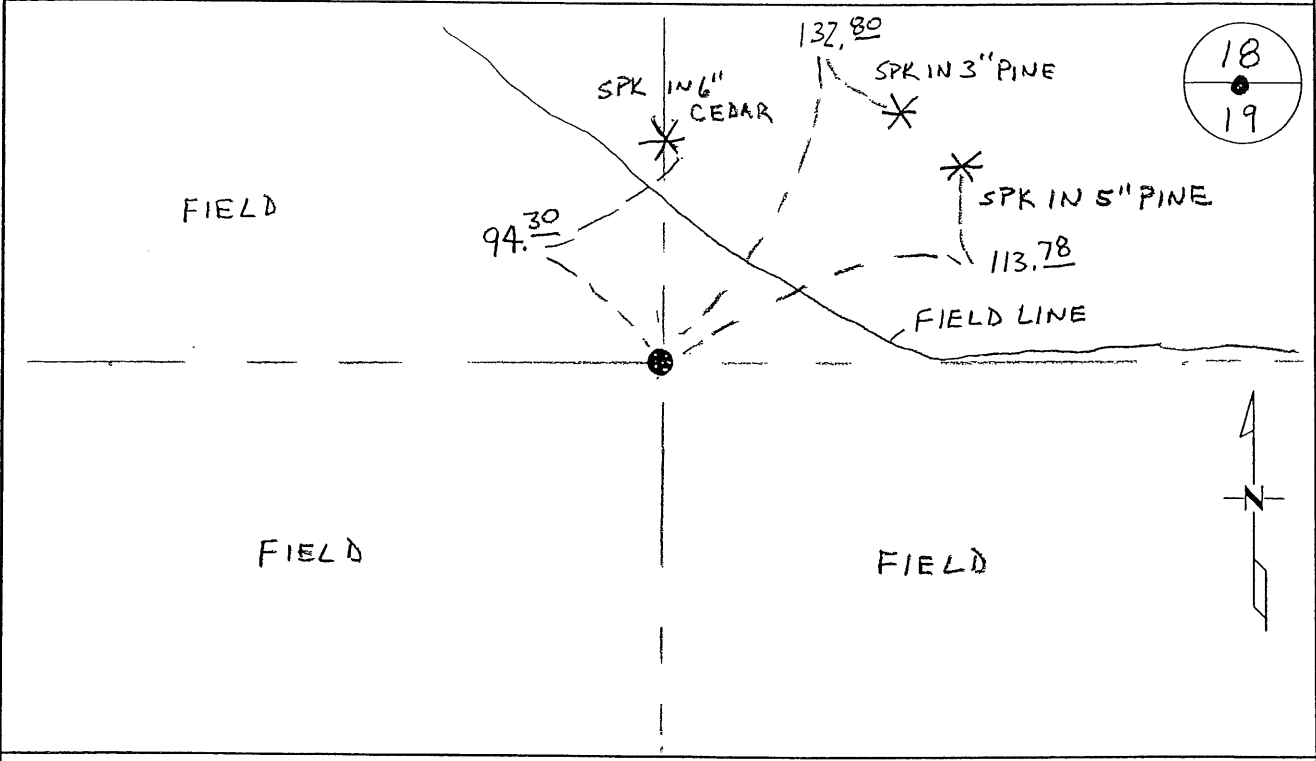
NORTH QUARTER Corner of Section 19, Township 38, Range 31
4TH Principal Meridian, State of Minnesota, County of Benton

At the corner location shown on the sketch:

On 8-25-08 found a 1/2" I.P. W/ BUSTED CAP

left monument as found lowered monument removed monument (explain)

On _____ placed an _____



Statement of evidence for this corner location is on back of this page.

I hereby certify that this document was researched and prepared by me or under my direct supervision and that I am a licensed Land Surveyor under the laws of the State of Minnesota.

Signature Ch. H. [Signature]
Deputy County Surveyor
License No. 43932

Date: 10/14/08

Benton County Surveyor's Office
Chris Høglund, Deputy County Surveyor
Minnesota License No. 43932

Statement of Evidence:

D191

North Quarter Corner of Section 19, Township 38 North, Range 31 West, East Langola Township, 4th Principal Meridian, Benton County, Minnesota.

- 1852 Original US General Land Office survey set a wood post in a mound with pit 8 links east at the corner location.
- 1991 David Regan, LS 12236, set an iron monument on a fence line (running east/west). He filed a Certificate of Location (#231242).
- 2002 No resurvey information was found on this corner in the Benton County records.
- 2004 MN/DOT
County Coordinates obtained by GPS
NAD 83 (1996 Adjustment)
N-180160.479
E-449179.618
- 2008 Westwood Professional Services, Inc. found a ½" iron pipe with broken cap assumed to be set by Regan in 1991. It appears the monument was set by proportional distance east/west while holding occupation to establish the north/south location. The fence line that was used by Regan fit ~1 foot south of a straight line from the NE corner to the NW corner of Section 19. The iron pipe is accepted as marking the obliterated position. County Coordinates Obtained by GPS verifies the 2004 MN/DOT location.

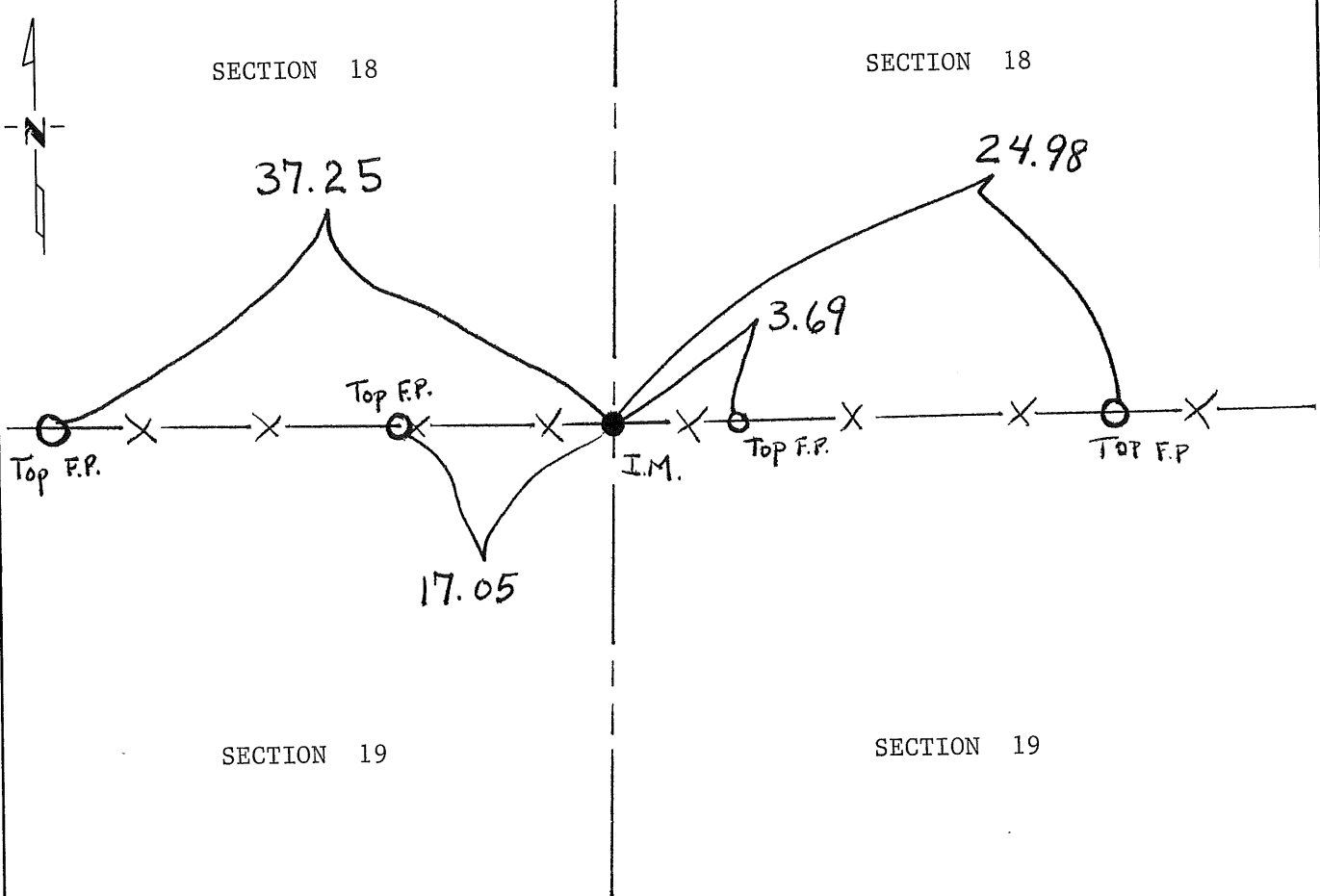
CERTIFICATE OF LOCATION OF GOVERNMENT CORNER

North Quarter Corner of Section 19, Township 38, Range 31, 4th P.M.
STATE OF MINNESOTA, County of Benton

At the corner location shown on the sketch:

- On _____ found a _____
DATE
- left monument as found, lowered monument, removed monument (explain)
- On 10/10/91 placed a Iron monument on fence line East-West
DATE

SKETCH OF REFERENCE TIES



Statement of evidence relative to this corner location is on back of page.

I hereby certify that this document and the data contained herein was prepared by me or under my direct supervision

David G. Ryan 3/27/95
SIGNATURE DATE

Registration No. 12236

- Land Surveyor, Professional Engineer
- County Surveyor, County Engineer

OFFICE OF THE REGISTER OF DEEDS

County of _____

I hereby certify that this document was filed in the Reg. of Deeds office at _____ .M. on the _____ day of _____ A.D., 19 _____

Register of Deeds _____

By _____, Deputy

DOCUMENT NO. _____

Statement of Evidence:

The G.L.O. survey was done in 1852 by Edwin James.

The County Surveyors records were researched with no reference to this corner.

On 10/91, Regan Land Surveyors, Inc. searched the area, then set a ½ inch iron pipe on the East-West fence line and used the top of the fence posts for ties.

231242

OFFICE OF
BENTON COUNTY RECORDER
BENTON COUNTY, MO
CERTIFIED TO BE FILED
AND/OR RECORDED ON

OCT 20 3 01 PM '95

ALICE G. ENGELMEYER
COUNTY RECORDER

BY *Man* DEPUTY CM