

Certified, Filed and or Recorded on
November 19, 2014 8:57 AM

BENTON COUNTY MINNESOTA
MARILYN J NOVAK
COUNTY RECORDER

By: CK

G -- V -- I

CERTIFICATE OF LOCATION OF GOVERNMENT CORNER

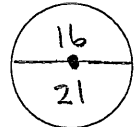
NORTH QUARTER Corner of Section 21, Township 38, Range 31
4TH Principal Meridian, State of Minnesota, County of Benton

At the corner location shown on the sketch:

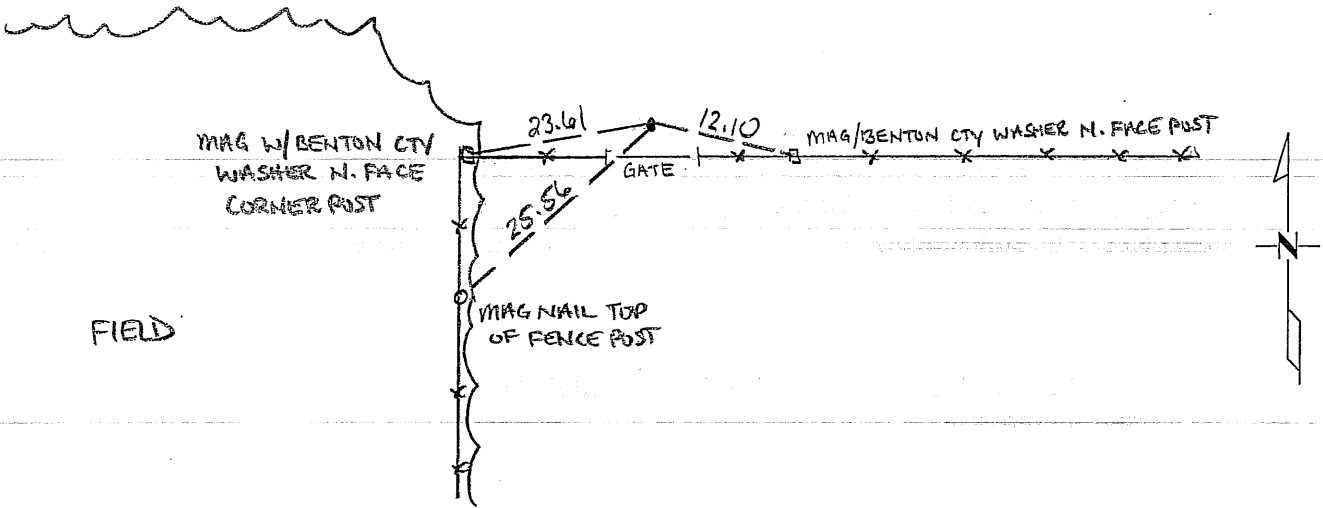
On 03/13/2014 found a 1/2" IRON PIPE LS 19552

left monument as found lowered monument removed monument (explain)

On _____ placed an _____



WOODS



Statement of evidence for this corner location is on back of this page.

I hereby certify that this survey, plan, or report was prepared by me or under my direct supervision and that I am a duly Licensed Land Surveyor under the laws of the state of Minnesota.

Signature Jerome C. Wittstock
Jerome C. Wittstock, PS, CFedS, Benton County Surveyor
License No. 19552

Date: 11/18/2014

Benton County Surveyor's Office
Jerome C. Wittstock, Deputy County Surveyor
Minnesota License No. 19552

Statement of Evidence:

D211

North Quarter Corner of Section 21, Township 38 North, Range 31 West, East Langola Township, 4th Principal Meridian, Benton County, Minnesota.

- 1852 Original US General Land Office survey set a wood post in a mound at the corner location.
- 1916 County Surveyor's Record Book 2, page 82 and Map No. 28 contains a survey of Section 16 by J.P. Soderstrum. He notes corner not found and corner set equal distance. Map shows a stone, which is 40.60 chains from the SE and the SW corners of Sec 16.
- 1985 David Regan, LS 12236, set a 1/2" iron pipe at the corner location for a partial subdivision of Sec 21.
- 1989 David Regan found a 1/2" iron pipe on a tree line east and the edge of woods to the north and south. He replaced it with a cast iron monument and filed a Certificate of Location (#195026).
- 2013 The Benton County Surveyor's Office found the CIM set in 1989. The stone set in 1916 was probed for, but was not found. The 1916 position falls 22 feet east and 6.5 feet south of the CIM. The distance to section corners to the east and west fits the 1916 survey within 1.7 feet in the half mile. The 1916 location fits the distance to the intersection of quarter lines within 2.1 feet of the 1916 distance and the resulting distance from intersection of quarter lines to the west quarter corner of Section 16 fits within 1.7 feet. The position falls 23 feet east of a fence south and 3 feet north of an east-west fence. Because of the high-quality measurements from 1916 and resulting comparison measurements to the 2013 measurements, the CIM was pulled and a 1/2" by 24" iron pipe capped 19552 was set at the lost position according to the 1916 survey.

County Coordinates obtained from GPS:

NAD 83 (1996 Adjustment)

N - 180233.430

E - 459852.960

- 2014 The Benton County Surveyor's Office found the iron pipe set in 2013 and verified the coordinates.

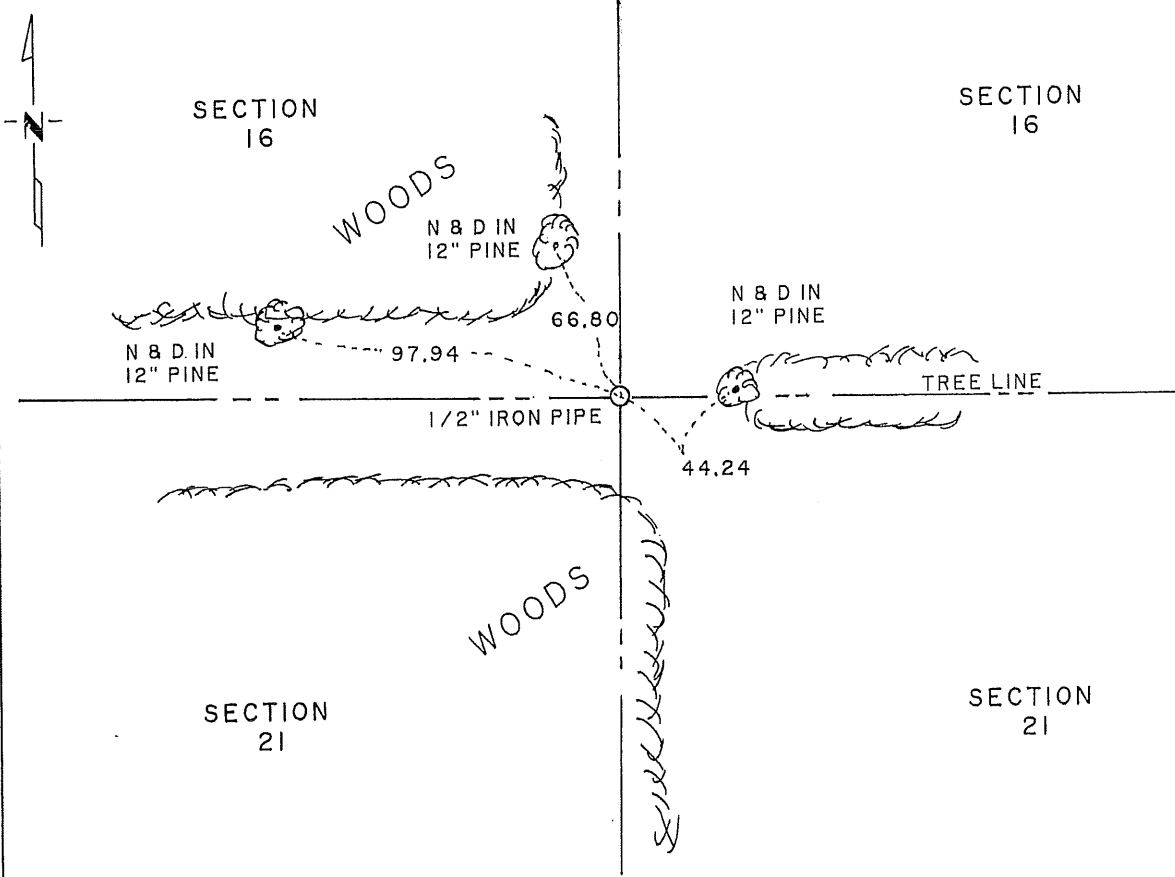
CERTIFICATE OF LOCATION OF GOVERNMENT CORNER

NORTH QUARTER Corner of Section 21, Township 38, Range 31, 4TH P.M.
STATE OF MINNESOTA, County of BENTON

At the corner location shown on the sketch:

- On 7/19/89 found a 1/2" iron pipe on tree line east and edge of woods north and south
DATE
 left monument as found, lowered monument, removed monument (explain)
- On 7/19/89 placed a Cast Iron Monument
DATE

SKETCH OF REFERENCE TIES



Statement of evidence relative to this corner location is on back of page.

I hereby certify that this document and the data contained herein was prepared by me or under my direct supervision.

David P. Ryan 10/30/89
SIGNATURE DATE

Registration No. 12236

- Land Surveyor, Professional Engineer
- County Surveyor, County Engineer

OFFICE OF THE REGISTER OF DEEDS
County of _____

I hereby certify that this document was filed in the Reg. of Deeds office at _____ .M. on the _____ day of _____ A.D., 19 _____

Register of Deeds _____

By _____, Deputy

DOCUMENT NO. _____

Statement of Evidence:

The G.L.O. survey was done in June, 1852 by Edwin James.

The County Surveyors records in Book 2, page 82, shows a symbol for a stone at this corner.

On 4/85, Bertram-Regan Land Surveyors, Inc. searched and dug the area and found nothing. A ½" iron pipe was set at this corner for a partial subdivision of Section 21 was done.

On 7/19/81, David P. Regan Land Surveying, Inc. found a ½" iron pipe at this corner and set a Cast Iron Monument.

195026

OFFICE OF
BENTON COUNTY RECORDER
BENTON COUNTY, AR
CERTIFIED TO BE FILED
AND/OR RECORDED ON

Nov 2 4 23 PM '89

ALICE G. ENGELMEYER
COUNTY RECORDER

BY *Jel* DEPUTY