

Certified, Filed and or Recorded on
November 19, 2014 8:57 AM

BENTON COUNTY MINNESOTA
MARILYN J NOVAK
COUNTY RECORDER

By: *[Signature]*

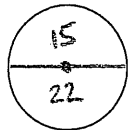
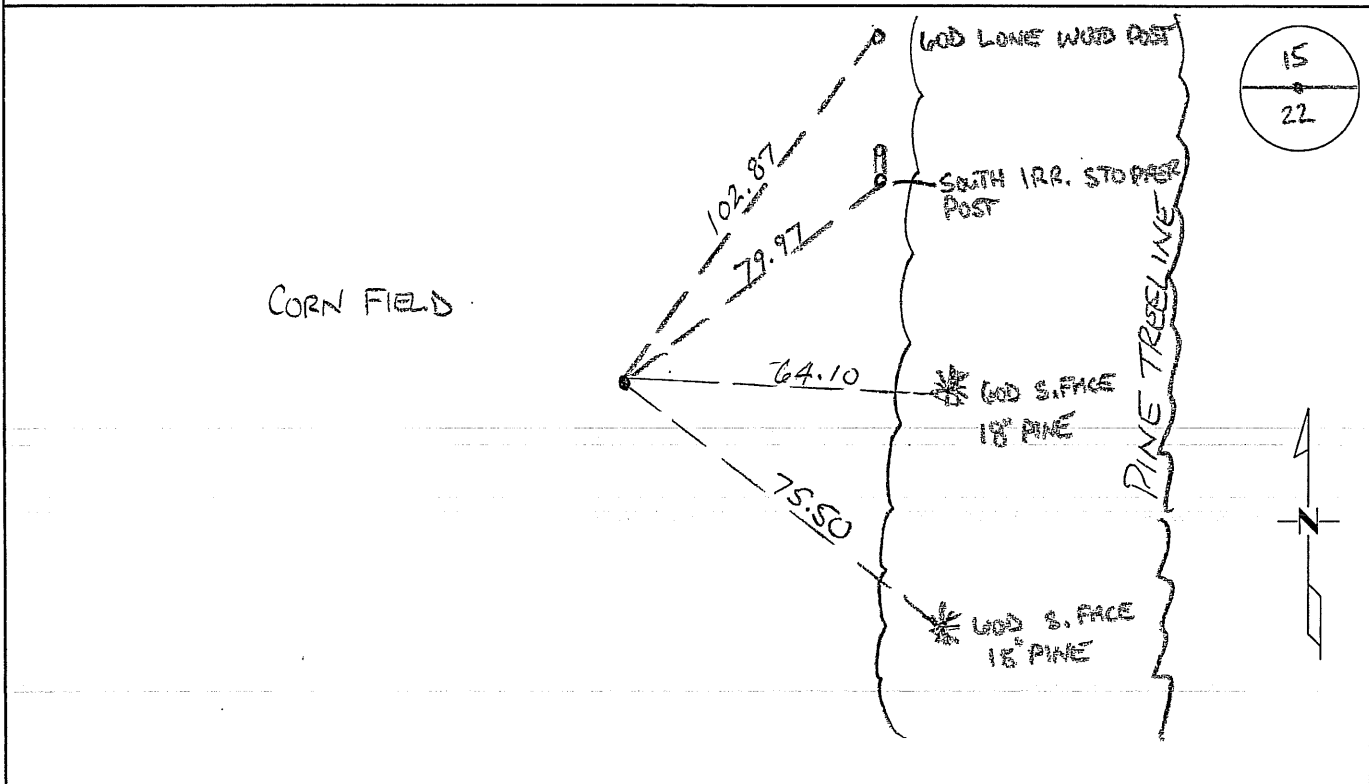
6 -- V -- I

CERTIFICATE OF LOCATION OF GOVERNMENT CORNER

NORTH QUARTER Corner of Section 22, Township 38, Range 31
4TH Principal Meridian, State of Minnesota, County of Benton

At the corner location shown on the sketch:

- On 05/13/2014 found a 1/2 IRON PIPE CHIPPED 1952 BURNED 1 FT IN
CORN FIELD
- left monument as found lowered monument removed monument (explain)
- On _____ placed an _____



Statement of evidence for this corner location is on back of this page.

I hereby certify that this survey, plan, or report was prepared by me or under my direct supervision and that I am a duly Licensed Land Surveyor under the laws of the state of Minnesota.

Signature *Jerome C. Wittstock*
Jerome C. Wittstock, PS, CFedS, Benton County Surveyor
License No. 19552

Date: 11/18/2014

Benton County Surveyor's Office
 Jerome C. Wittstock, Deputy County Surveyor
 Minnesota License No. 19552

Statement of Evidence:**D221**

North Quarter Corner of Section 22, Township 38 North, Range 31 West, East Langola Township, 4th Principal Meridian, Benton County, Minnesota.

- 1852 Original US General Land Office survey set a wood post in a mound with pit 8 links east at the corner location.
- 1917 County Surveyor's Record Book 2, page 94, shows that N. Drolson, Deputy County Surveyor, surveyed the north line of Section 22, measuring 80.80 chains (5332.8 feet) and setting a post for this corner midway (lost position).
- 1961 MN/DNR survey crew set an I. P. at the corner lost, measuring 5336.0 feet between section corners.
- 2010 Westwood Professional Services Inc. searches area with metal locator and finds nothing (lost position falls in tilled field). Measured 5341.62 feet between section corners. Set 1/2" x 18" iron pipe capped 19552 at lost position.
 County Coordinates obtained by GPS
 NAD 83 (1996 Adjustment)
 N- 180277.677
 E- 465204.819
- 2014 The Benton County Surveyor's Office found the iron capped 19552 and verified the 2010 coordinates.