

428867

Certified, Filed and or Recorded on
April 26, 2018 9:49 AM

BENTON COUNTY MINNESOTA
CHERYL L. KANTOR
COUNTY RECORDER

By: [Signature]

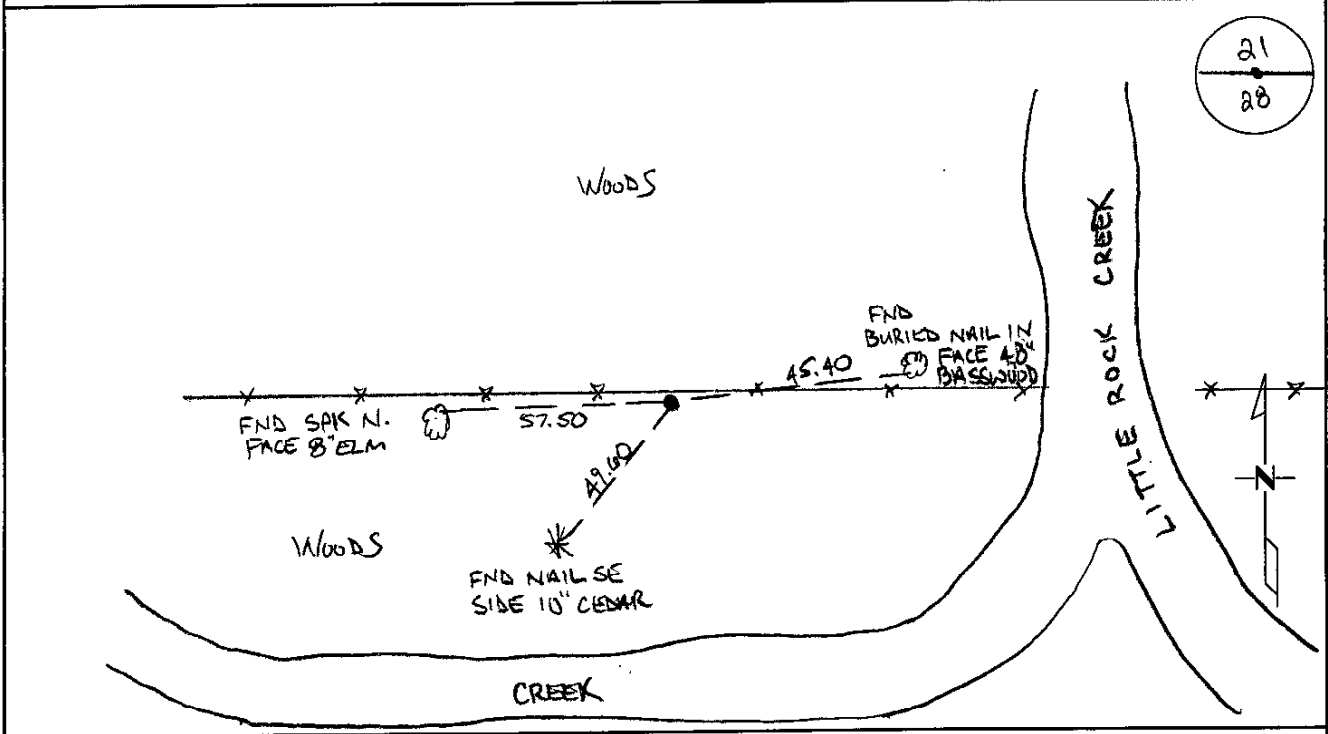
6 - v - 1

CERTIFICATE OF LOCATION OF GOVERNMENT CORNER

NORTH QUARTER Corner of Section 28, Township 38, Range 31
4TH Principal Meridian, State of Minnesota, County of Benton

At the corner location shown on the sketch:

- On 03/05/2014 found a CAST IRON MONUMENT
- left monument as found lowered monument removed monument (explain)
- On _____ placed an _____



Statement of evidence for this corner location is on back of this page.

I hereby certify that this survey, plan, or report was prepared by me or under my direct supervision and that I am a duly Licensed Land Surveyor under the laws of the state of Minnesota.

Signature Jerome C. Wittstock
Jerome C. Wittstock, PS, CFedS, Benton County Surveyor
License No. 19552

Date: 11 April 2018

PAGE 1 OF 2

Benton County Surveyor's Office
 Jerome C. Wittstock, County Surveyor
 Minnesota License No. 19552

Statement of Evidence:**D281**

North Quarter of Section 28, Township 38 North, Range 31 West, East Langola Township, 4th Principal Meridian, Benton County, Minnesota.

- 1852 Original US General Land Office survey set a wood post at this location and bearing trees were recorded.
- | | | |
|-------------|------------|-----------|
| 10" Bur Oak | S 33 1/2 W | 32 links |
| 8" Bur Oak | N 1 W | 118 links |
- 1976 William Lunser, LS 9394, set a 1/2" pipe at the intersection of fence lines north/west/east and filed a Certificate of Location (#147069). List distances of 2628.76 feet to the NW corner and 2649.26 feet to the NE corner Section 28.
- 2000 Sam Deleo, LS 40341, found a 1/2" pipe and set a cast iron monument over the pipe. He filed a Certificate of Location (#271520) and also notes that he found an old spike and a double blaze in the face of a 48" Basswood 45.43 feet easterly of the found iron, which fits Lunser's tie. He lists distances of 2628.61 feet to the NW corner and 2649.39 feet to the NE corner of Section 28. He notes per Doc. No. 271522, a distance of 2649.39 feet to the NE corner Sec 28 (CIM).

Corner is shown on record plat of:

EASTSIDE ESTATES filed 7/15/2001 by Sam Deleo

- 2004 Surveying & Engineering Professionals, Inc. found a CIM at the corner location. Measured 2628.28 feet to the NW corner and 2649.5 feet to the NE corner. County Coordinates obtained by GPS.
 NAD 83 (1996 Adjustment)
 N-174921.259
 E-460134.598
- 2004 MN/DOT
 County Coordinates obtained by GPS
 NAD 83 (1996 Adjustment)
 N-174921.050
 E-460135.008
- 2014 The Benton County Surveyor's Office found the CIM and verified the 2004 MnDOT coordinate. The CIM is accepted as marking the corner position.

271520

OFFICE OF
BENTON COUNTY RECORDER
BENTON COUNTY, MN
CERTIFIED TO BE FILED
AND/OR RECORDED ON

JAN 30 4 03 PM '01

ALICE O. ENGELMEYER
COUNTY RECORDER

BY mm DEPUTY xm

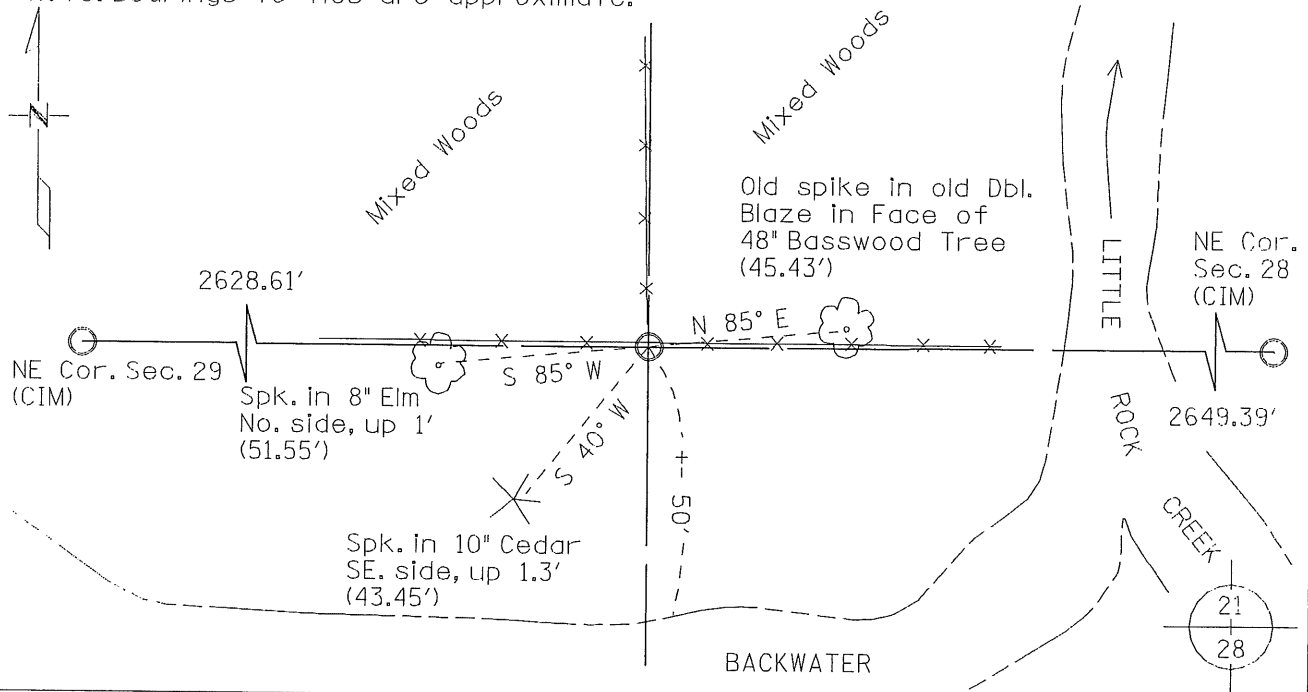
CERTIFICATE OF LOCATION OF GOVERNMENT CORNER

NORTH QUARTER Corner of Section 28, Township 38 N, Range 31 W
4th Principal Meridian, State of Minnesota, County of BENTON

At the corner location shown on the sketch:

- On 11/10/2000 found a 1/2" IRON PIPE
DATE
- left monument as found lowered monument removed monument (explain)
- On 11/24/2000 placed a STANDARD BENTON COUNTY CAST IRON MONUMENT OVER
DATE
THE FOUND 1/2" IRON PIPE

Note: Bearings to ties are approximate.



Statement of evidence for this corner location is on back of this page.

I hereby certify that this document was researched and prepared by me or under my direct supervision.

Signature Samuel J. Deleo Date 1-15-2001 License No. 40341
 Title: Land Surveyor Professional Engineer County Surveyor County Engineer

Statement of Evidence

North Quarter Corner of Section 28, Twp. 38 N, Rng. 31 W
4th P.M., Benton County, Minnesota

Copies of notes from the original GLO survey, located in the office of the Benton County Highway Department, state that a wood post was set to mark the corner, midway at 40.37 Chains from the NE Corner of Sec. 28.

Three reference ties were made:

10" Bur Oak, S 33 ½ Deg. W, 32 Links.

8" Bur oak, N 1 Deg. W, 115 Links.

44.75 Chains from the NE Corner of Sec. 28 to Little Rock Creek, 30 Links wide.

October 1976; William Lunser, RLS #9394, established the location of the corner by evidence of fence lines to the north, west, and east. A ½" iron pipe was set and reference ties were recorded. A Certificate of Location of Government Corner was filed with the Benton County Recorder, Doc. # 147069.

November 2000; Sam DeLeo, RLS #40341, found a ½" iron pipe at the intersection of the existing fence lines to the north. An old spike and a double blaze was found in the face of a 48" Basswood tree 45.43' easterly of the found iron pipe. A Benton County cast iron monument was set over the ½" pipe. New ties were recorded and a new Certificate of Location of Government Corner was made.

CERTIFICATE OF LOCATION OF GOVERNMENT CORNER

n/4 (Restored) Corner of Section 28, Township 38, Range 31, _____ P.M.

STATE OF MINNESOTA, County of Benton

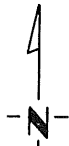
At the corner location shown on the sketch:

On 10-19-1976 found a _____ fence lines to the north, west & east
DATE

left monument as found, lowered monument, removed monument (explain)

On _____ placed a 1/2 iron pipe
DATE

SKETCH OF REFERENCE TIES


Refer to next page

Statement of evidence relative to this corner location is on back of page.

I hereby certify that this document and the data contained herein was prepared by me or under my direct supervision.

William T. Lunsar _____ 10-19-77
SIGNATURE DATE

Registration No. 9394

Land Surveyor, Professional Engineer

County Surveyor, County Engineer

OFFICE OF THE REGISTER OF DEEDS

County of Benton

County Recorder

I hereby certify that this document was filed in the Reg. of Deeds office at 9 A. .M. on the 20th day of December A.D., 1977

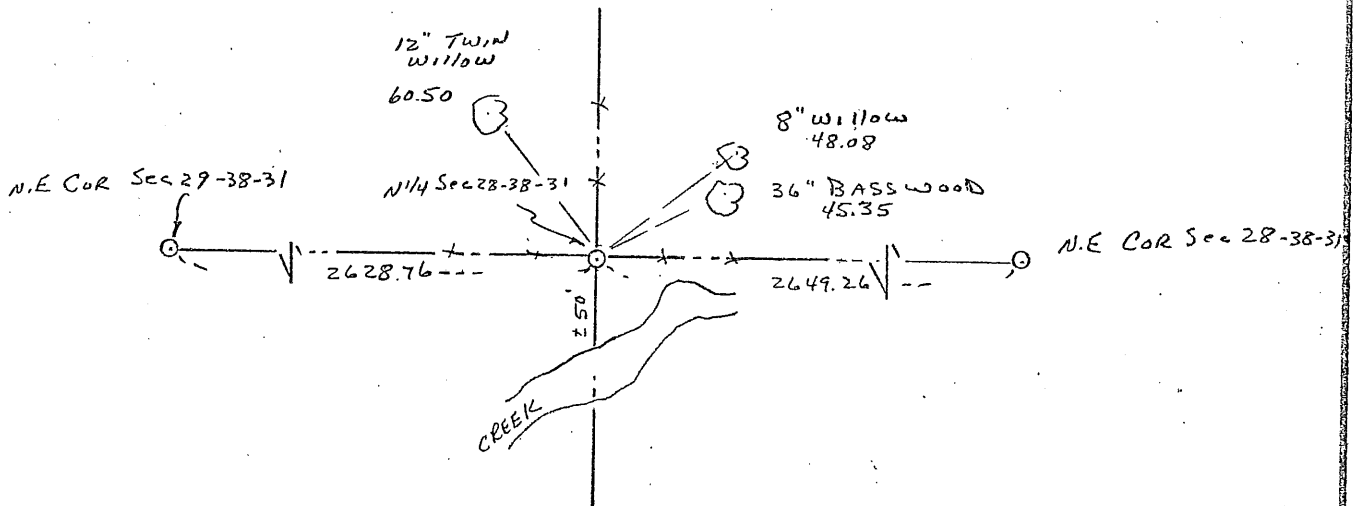
Register of Deeds T.G. Johnson
By _____, Deputy
County Recorder

DOCUMENT NO. 147069

CERTIFICATE OF LOCATION OF GOVERNMENT CORNER

I hereby certify that on the 19 day of Oct., 1976
 I did restore the N $\frac{1}{4}$ corner of Section 28,
 Twp. 38, Rg. 31, Benton County, Minnesota, which
 was evidenced by fence lines to the north, west & east

I further certify that in order to perpetuate said corner I did
 at the exact location thereof place a permanent marker consisting
 of $\frac{1}{2}$ iron pipe and that
 I did establish witness or reference monuments as shown below:



147069

I hereby certify that the
 above is true and correct
 and that I am a registered
 Land Surveyor under the laws
 of the State of Minnesota.

William F. Larson

Minn. Registration No. 9394

County Recorded
 Office of the ~~Register~~ of Deeds,
Benton County, Minn.

I hereby certify that the within
 instrument was filed for record
 in this office on the 20 day of
December, 1977 at 9 A.M.

F. G. Johnson
 Register of Deeds

By County Recorder Deputy.