

389402

Certified, Filed and or Recorded on
June 20, 2012 1:49 PM

BENTON COUNTY MINNESOTA
MARILYN J NOVAK
COUNTY RECORDER

By: BW

6--4--1

FEE AMOUNT \$46.00

CERTIFICATE OF LOCATION OF GOVERNMENT CORNER

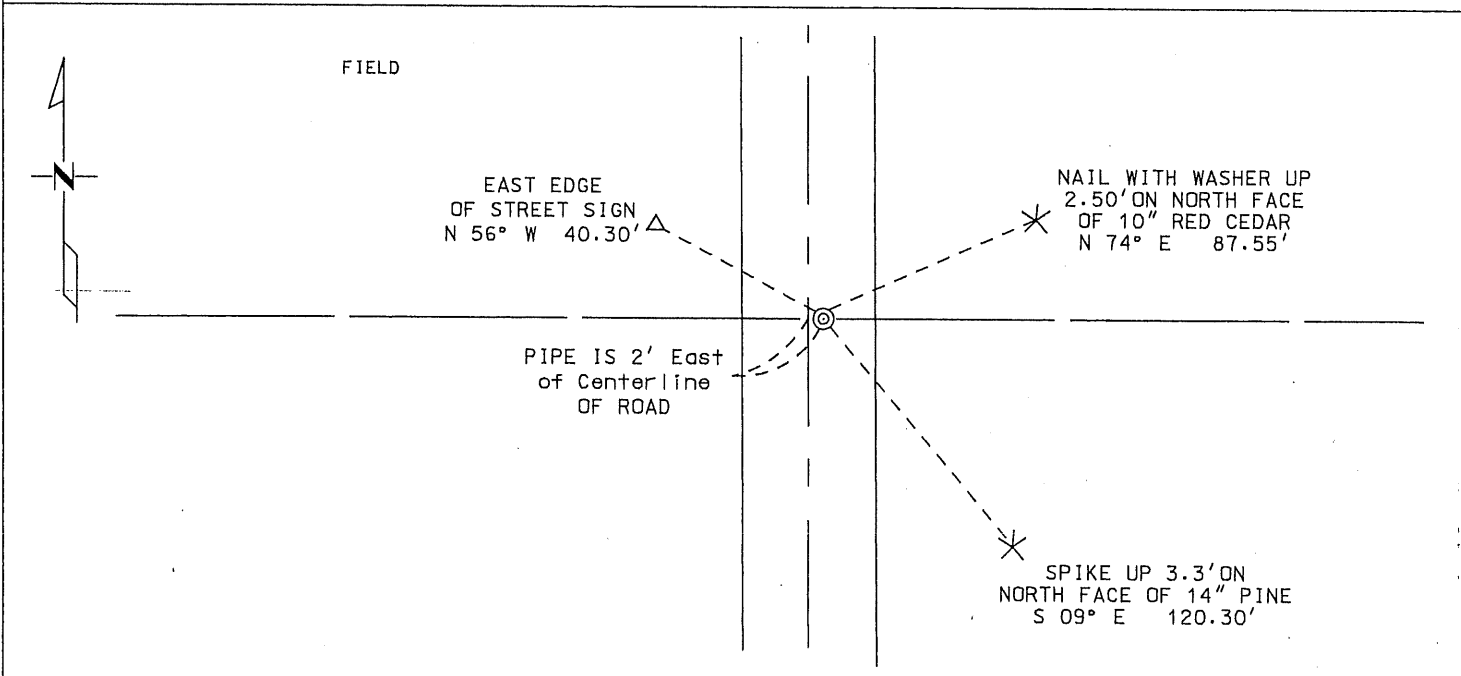
North Quarter Corner of Section 29, Township 38, Range 31
4TH Principal Meridian, State of Minnesota, County of Benton

At the corner location shown on the sketch:

On 3-5-2012 found a 1/2 inch Capped Iron Pipe with RLS #9394
DATE

left monument as found lowered monument removed monument (explain)

On _____ placed a _____
DATE



Statement of evidence for this corner location is on back of this page.

I hereby certify that this survey, plan, or report was prepared by me or under my direct supervision and that I am a duly Licensed Land Surveyor under the laws of the state of Minnesota.

Signature Trevor L. Skeesick Date 3-12-2012 License No. 46573
Trevor L. Skeesick MNDOT

Title: Land Surveyor Professional Engineer County Surveyor County Engineer

Statement of Evidence**North Quarter Corner of Section 29, Township 38 North, Range 31 West, East Langola Township,
4th Principal Meridian, Benton County, Minnesota.**

- 1852 Original US General Land Office survey set a wood post in a mound with a pit 8 links east at the corner location.
- 1946 MN/DOT alignment map for TH 10 shows corner assumed in road intersection 1082.6 feet east of the centerline. Map gives a distance of 2639.2 to the assumed NE corner of Sec. 30.
- 1971 William Lunser, LS 9394, found a 5/8" pin and left it as found. He filed a Certificate of Location (#133444). He notes a distance of 2762.83 feet to the North East Corner of Section 29.
- 1988 Paul Wellen, LS 10461, notes a Cast Iron Monument at the corner.

*Corner is shown on the following record plats:

RICE INDUSTRIAL PARK by Linda Brown filed 2/8/2001

ROSEWOOD INDUSTRIAL PARK by Delbert Rieke filed 4/7/1975

- 2004 Westwood Professional Services, Inc. found a PK nail at the corner location. Measured 2624.40 feet to the North West Corner of Section 29 and measured 2762.30 feet to the North East Corner of Section 29. PK nail appears to agree with Lunser's 1971 position.
County Coordinates obtained by GPS.
NAD 83 (1996 Adjustment)
N-174892.055
E-454744.097
- 2008 Westwood Professional Services, Inc. found a 1/2" iron pipe #9394 at the corner location. Corner fits longstanding occupation along the north/south quarter lines to the north and south. This location is accepted as marking the obliterated corner location. County coordinates obtained by GPS verified 2004 coordinates.
- 2012 On April 5th, 2012, The Minnesota Department of Transportation found a 1/2 "Capped Iron Pipe with RLS#9394 at the North Quarter Corner of Section 29. Two existing ties were found and verified with the Certificate of Location Corner on file at the Benton County's Recorder's office (#361341). One new reference tie was established. The Distance's measured to corresponding corners were checked and verified, along with the coordinates as recorded on the previous statement of evidence in 2004. No witnesses could provide information contrary to the location of the 1/2 "Capped Iron Pipe with RLS#9394.

The Minnesota Department of Transportation accepts the 1/2 "Capped Iron Pipe with RLS#9394 as the correct location of the North Quarter Corner of Section 29.

For details and survey analysis, contact the Minnesota Department of Transportation District Surveys Office in Baxter, Minnesota

A 361341

Certified, Filed and or Recorded on
Oct. 31, 2008 AT 08:25AM

Signed: JN
MARILYN J NOVAK G V
BENTON COUNTY MINNESOTA
MARILYN J NOVAK
COUNTY RECORDER

CERTIFICATE OF LOCATION OF GOVERNMENT CORNER

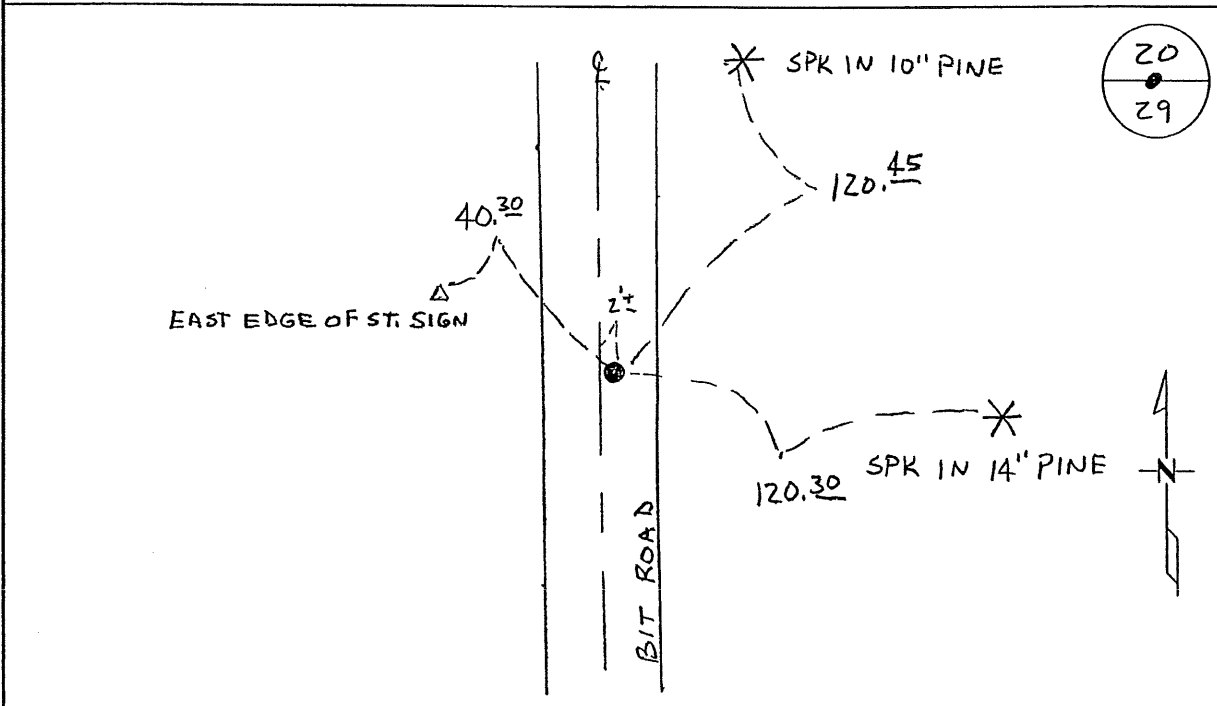
NORTH QUARTER Corner of Section 29, Township 38, Range 31
4TH Principal Meridian, State of Minnesota, County of Benton

At the corner location shown on the sketch:

On 8-25-08 found a 1/2" I.P. # 9394

left monument as found lowered monument removed monument (explain)

On _____ placed an _____



Statement of evidence for this corner location is on back of this page.

I hereby certify that this document was researched and prepared by me or under my direct supervision and that I am a licensed Land Surveyor under the laws of the State of Minnesota.

Signature [Handwritten Signature]
Deputy County Surveyor
License No. 43932

Date: 10/14/08

A 361341

Benton County Surveyor's Office
Chris Hoglund, Deputy County Surveyor
Minnesota License No. 43932

Statement of Evidence:

D291

North Quarter Corner of Section 29, Township 38 North, Range 31 West, East Langola Township, 4th Principal Meridian, Benton County, Minnesota.

- 1852 Original US General Land Office survey set a wood post in a mound with a pit 8 links east at the corner location.
- 1946 MN/DOT alignment map for TH 10 shows corner assumed in road intersection 1082.6 feet east of the centerline. Map gives a distance of 2639.2 to the assumed NE corner of Sec. 30.
- 1971 William Lunser, LS 9394, found a 5/8" pin and left it as found. He filed a Certificate of Location (#133444). He notes a distance of 2762.83 feet to the NE corner Sec 29.
- 1988 Paul Wellen, LS 10461, notes a cast iron monument at the corner.
- 2004 Westwood Professional Services, Inc. found a PK nail at the corner location. Measured 2624.40 feet to the NW corner and 2762.30 feet to the NE corner. PK nail appears to agree with Lunser's 1971 position.
County Coordinates obtained by GPS.
NAD 83 (1996 Adjustment)
N-174892.055
E-454744.097
- 2008 Westwood Professional Services, Inc. found a 1/2" iron pipe #9394 at the corner location. Corner fits longstanding occupation along the north/south quarter lines to the north and south. This location is accepted as marking the obliterated corner location. County coordinates obtained by GPS verify 2004 coordinates.

*Corner is shown on the following record plats:

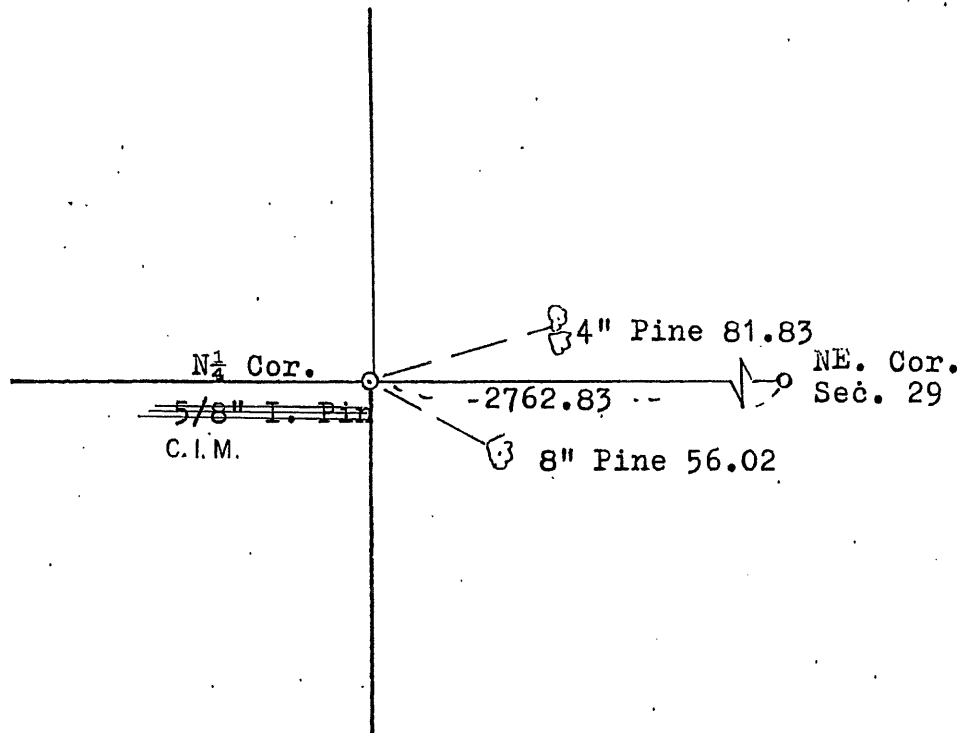
RICE INDUSTRIAL PARK by Linda Brown filed 2/8/2001

ROSEWOOD INDUSTRIAL PARK by Delbert Rieke filed 4/7/1975

CERTIFICATE OF LOCATION OF GOVERNMENT CORNER

I hereby certify that on the 15 day of March, 1971
I did find _____ the north quarter corner of Section 29,
Twp. 38, Rg. 31, Benton County, Minnesota, which
was evidenced by a 5/8" iron pin found in place

I further certify that in order to perpetuate said corner I did
at the exact location thereof place a permanent marker consisting
of ~~left as it was~~ Benton County Cast Iron Monument and that
I did establish witness or reference monuments as shown below:



Initially Certified Mar 71
 Recorded Feb 73
 1 E NW
 NW NE
 29
 SW NE
 22-38-31

173428

I hereby certify that the above is true and correct and that I am a registered Land Surveyor under the laws of the State of Minnesota.

William J. L...

Minn. Registration No. 9394

Revised 5-17-1983

Office of the Register of Deeds,
Benton County, Minn.

I hereby certify that the within instrument was filed for record in this office on the 16th day of May, 1975. at 11:00 A.M.

Oliver C. Engelmeier
Register of Deeds

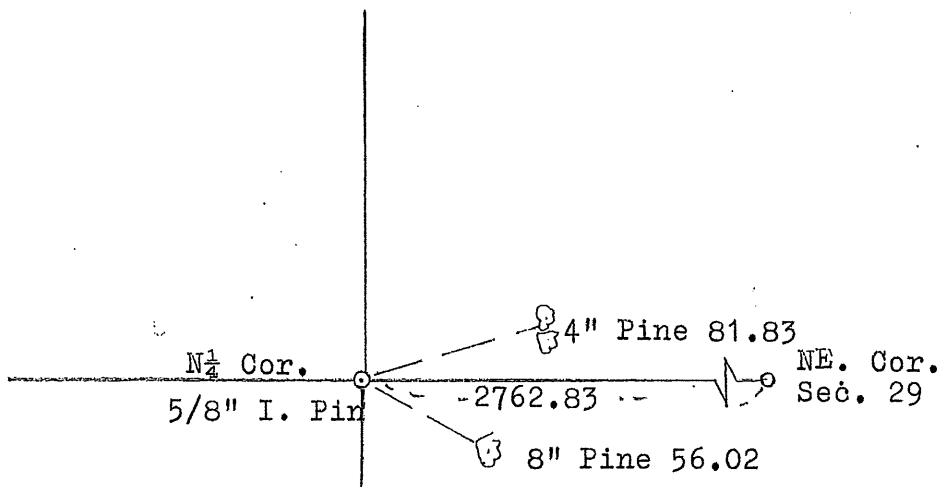
By _____ Deputy.

Langala

CERTIFICATE OF LOCATION OF GOVERNMENT CORNER

I hereby certify that on the 15 day of March, 1971
I did find _____ the north quarter corner of Section 29,
Twp. 38, Rg. 31, Benton County, Minnesota, which
was evidenced by a 5/8" iron pin found in place

I further certify that in order to perpetuate said corner I did
at the exact location thereof place a permanent marker consisting
of _____ left as it was _____ and that
I did establish witness or reference monuments as shown below:



133444

I hereby certify that the above is true and correct and that I am a registered Land Surveyor under the laws of the State of Minnesota.

William H. Johnson

Minn. Registration No. 9394

Office of the Register of Deeds,
Benton County, Minn.

I hereby certify that the within instrument was filed for record in this office on the 9th day of February, 1973.

J. A. Johnson
Register of Deeds

By Marilyn Nowak Deputy.