

428601

Certified, Filed and or Recorded on
April 03, 2018 1:30 PM

BENTON COUNTY MINNESOTA
CHERYL L. KANTOR
COUNTY RECORDER

By: [Signature]

6 - V - I

CERTIFICATE OF LOCATION OF GOVERNMENT CORNER

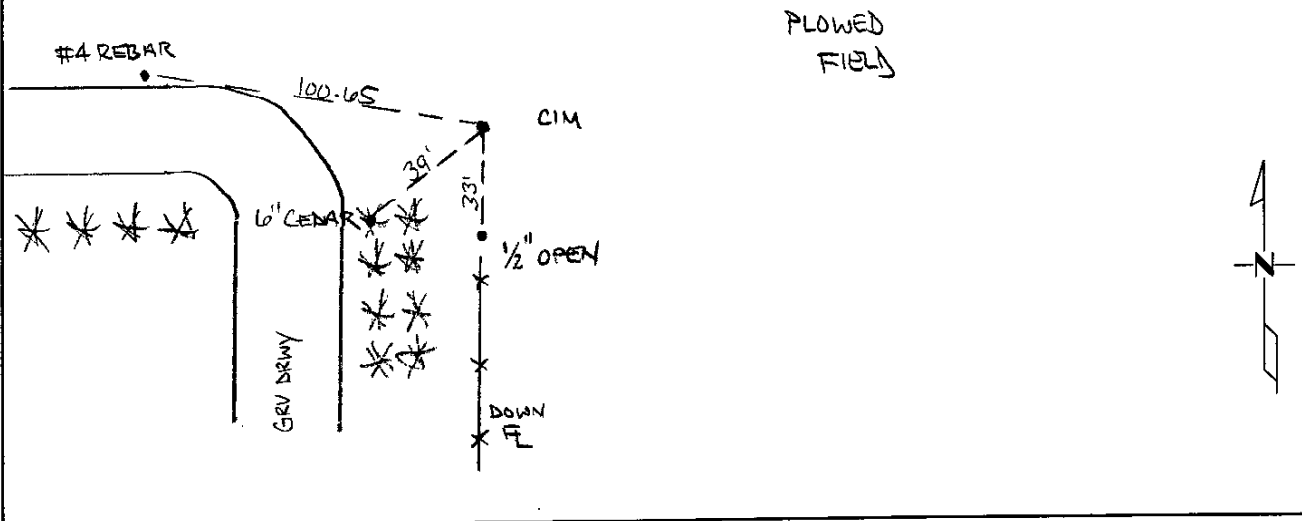
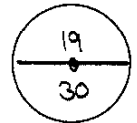
NORTH QUARTER Corner of Section 30, Township 38, Range 31
4TH Principal Meridian, State of Minnesota, County of Benton

At the corner location shown on the sketch:

On 03/06/2014 found a CAST IRON MONUMENT ON EAST SIDE OF 2" STEEL POST BURIED 1.2'

left monument as found lowered monument removed monument (explain)

On _____ placed an _____



Statement of evidence for this corner location is on back of this page.

I hereby certify that this survey, plan, or report was prepared by me or under my direct supervision and that I am a duly Licensed Land Surveyor under the laws of the state of Minnesota.

Signature Jerome C. Wittstock
Jerome C. Wittstock, PS, CFedS, Benton County Surveyor
License No. 19552

Date: 4/2/2018

PAGE 1 OF 2

Benton County Surveyor's Office
Jerome C. Wittstock, Deputy County Surveyor
Minnesota License No. 19552

Statement of Evidence:

D301

North Quarter Corner of Section 30, Township 38 North, Range 31 West, East Langola Township, 4th Principal Meridian, Benton County, Minnesota.

- 1852 Original US General Land Office survey set a wood post in a mound with a pit 8 links east at the corner location.
- 1991 David Regan, LS 12236, set a cast iron monument 10 feet north of the centerline of a field road, running east and west and on a fence line from the south. He filed a Certificate of Location (#223477).
- 2002 No resurvey information was found on this corner in the Benton County records.
- 2004 MN/DOT
County Coordinates obtained by GPS
NAD 83 (1996 Adjustment)
N-174831.488
E-449469.984
- 2014 The Benton County Surveyor's Office found the cast iron monument set in 1991 by Regan and verified the 2004 MnDOT coordinate. The found CIM is harmonious with lines of occupation to the north and south. Half mile distance east measures 10 feet long of GLO while distance west measures 13 feet long of GLO being close to proportional. The CIM is accepted as marking the corner position.

CERTIFICATE OF LOCATION OF GOVERNMENT CORNER

North Quarter _____ Corner of Section 30, Township 38, Range 31, 4th P.M.

STATE OF MINNESOTA, County of Benton

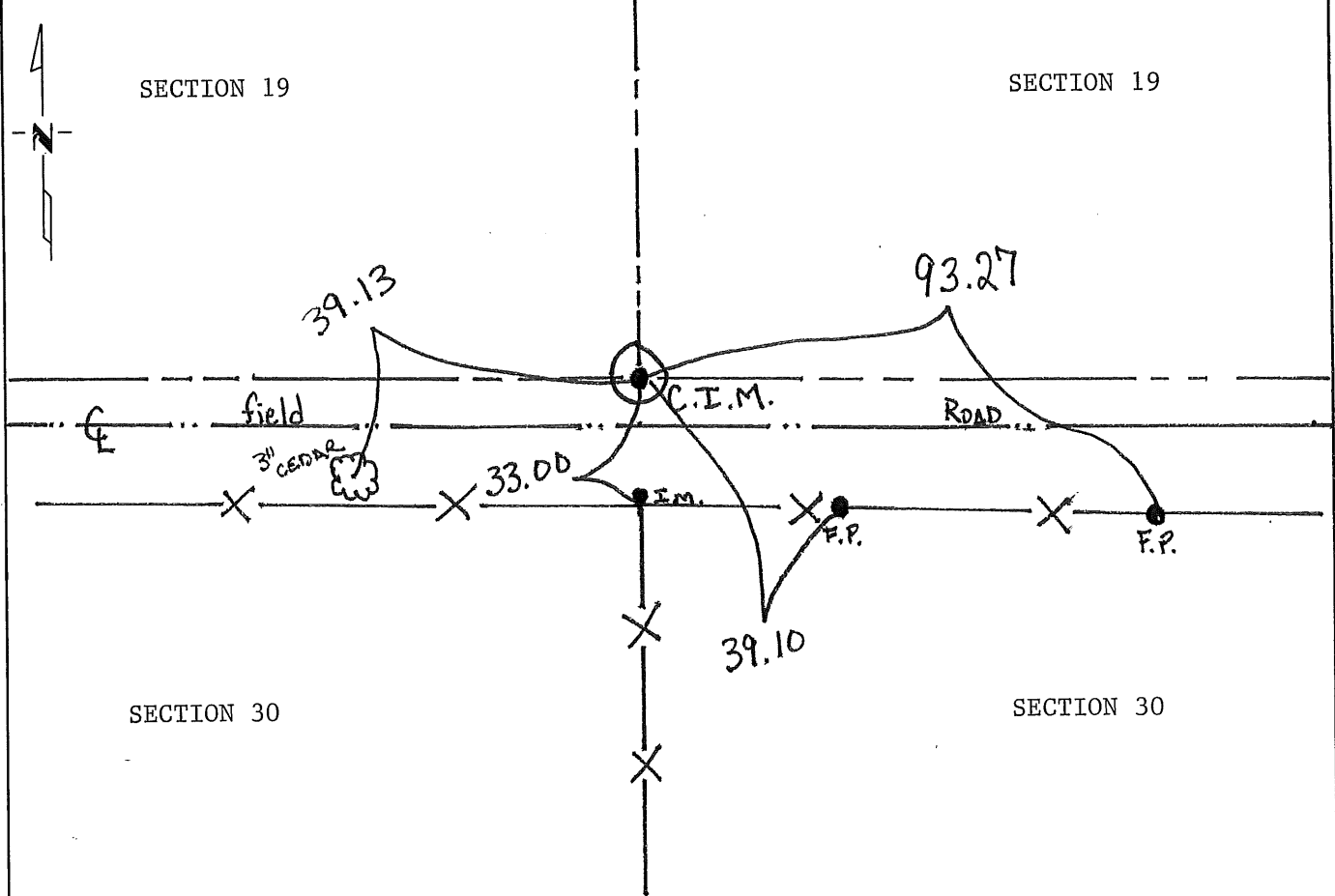
At the corner location shown on the sketch:

On _____ found a _____
DATE

left monument as found, lowered monument, removed monument (explain)

On 10-10-91 placed a Cast Iron Monument 10± North of center line field road
DATE
East-West and on fence line South

SKETCH OF REFERENCE TIES



Statement of evidence relative to this corner location is on back of page.

I hereby certify that this document and the data contained herein was prepared by me or under my direct supervision.

David G. Ryan 5/12/94
SIGNATURE DATE

Registration No. 12236

- Land Surveyor, Professional Engineer
- County Surveyor, County Engineer

OFFICE OF THE REGISTER OF DEEDS

County of _____

I hereby certify that this document was filed in the Reg. of Deeds office at _____ M. on the _____ day of _____ A.D., 19 _____

Register of Deeds _____

By _____, Deputy

DOCUMENT NO. _____

Statement of Evidence:

The G.L.O. survey was done in 1852 by Edwin James.

The County Surveyors records were researched with no reference to this corner.

On 10/91, Regan Land Surveyors, Inc. searched the area, then placed a cast iron monument 10 feet \pm North of the field road centerline running East and West, and on a fence line South.

2 2 3 4 7 7

OFFICE OF
BENTON COUNTY RECORDER
BENTON COUNTY, MN
CERTIFIED TO BE FILED
AND/OR RECORDED ON

JUN 17 1 02 PM '94

ALICE G. EINHARTMEYER
COUNTY RECORDER

BY *[Signature]* DEPUTY