

389399

Certified, Filed and or Recorded on  
June 20, 2012 1:49 PM

BENTON COUNTY MINNESOTA  
MARILYN J NOVAK  
COUNTY RECORDER

By: BW

G -- V -- I

FEE AMOUNT \$46.00

# CERTIFICATE OF LOCATION OF GOVERNMENT CORNER

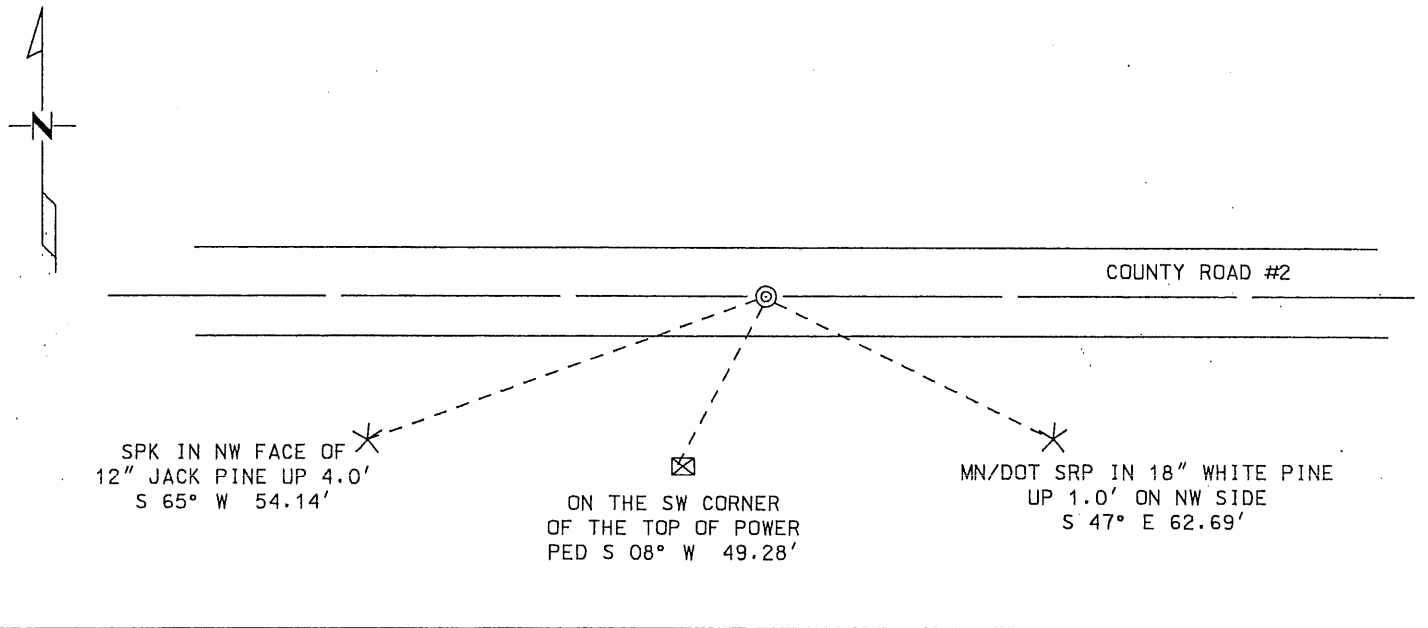
NORTH QUARTER Corner of Section 33, Township 38 N, Range 31 W  
4TH Principal Meridian, State of Minnesota, County of BENTON

At the corner location shown on the sketch:

On 3-12-2012 found a PK NAIL AT SURFACE ABOVE CAST IRON MONUMENT  
DATE

left monument as found     lowered monument     removed monument (explain)

On \_\_\_\_\_ placed a \_\_\_\_\_  
DATE



Statement of evidence for this corner location is on back of this page.

I hereby certify that this survey, plan, or report was prepared by me or under my direct supervision and that I am a duly Licensed Land Surveyor under the laws of the state of Minnesota.

Signature Trevor L. Skeesick Date 3-16-2012 License No. 46573  
Trevor L. Skeesick MNDOT

Title:  Land Surveyor     Professional Engineer     County Surveyor     County Engineer

Statement of Evidence

The North Quarter Corner of Section 33, Township 38 North, Range 31 West, East Langola Township, 4th Principal Meridian, Benton County, Minnesota.

1852; In June 1852, Edwin James Jr. set a wood post in a mound at this location.

This corner is noted on the following recorded plats

<i>GEORGE ADDITION</i>	<i>1/20/1981</i>	<i>William Lunser</i>	
<i>FROMLET ADDITION</i>	<i>3/19/1990</i>	<i>David P. Regan</i>	
<i>BROCKA ADDITION</i>	<i>1/31/2000</i>	<i>David P. Regan</i>	<i>CIM</i>
<i>BROCKA FIRST ADDITION</i>	<i>1/31/2000</i>	<i>David P. Regan</i>	<i>CIM</i>

1921 County Engineer's notebook 21 contains notes for road that runs east from this corner. Tie states F.P. South 33.0'

1972 On August 25, 1972 William Lunser set a RR spike at the centerline of County Road 2 and at distances proportionate to the Benton County Highway stationing. A Certificate of Location (#133449) was filed. A distance of 2676.57 feet was measured to both the NW and NE Corners of Section 33.

1978 Paul Wellen, LS 10461, measured 2676.94 feet to the NW corner and 2676.53 feet to the NE corner of Section 33

2000 On November 24, 2000 Sam Deleo found a RR spike at the corner location. He replaced the RR spike with a cast iron monument and he filed a Certificate of Location (#271526). A distance of 2676.88 feet to the NW Corner of Section 33 and a distance of 2676.52 to the NE Corner of Section 33 were recorded.

2001 On July 19, 2001 Westwood Professional Services, Inc. found a cast iron monument at the corner location that fit with ties.

2002 In April 2002 Westwood Professional Services, Inc. located monuments along County Road 2, prior to road construction, using GPS. They positioned the corner and made distances checks to the east and west of quarter corner. They checked well with Lunser's. Distances made in 1978.

2002 On November 15, 2002 Westwood Professional Services, Inc. set a PK nail at the location of the found cast iron monument at the surface of bituminous road after the road construction was finalized.  
County Coordinates Obtained by GPS  
NAD 83 (1996 Adjustment)  
N-169620.413  
E-460157.509

2012 On April 6th, 2012, The Minnesota Department of Transportation found a PK nail at the surface of the bituminous road above the cast iron monument as noted in the previous Certificate of Location of Government Corner for the North Quarter Corner of Section 33. Three existing ties were found and verified with the Certificate of Location Corner on file at the Benton County's Recorder's office (#293727). The Distance's measured to corresponding corners were checked and verified, along with the coordinates as recorded on the previous statement of evidence in 2002. No witnesses could provide information contrary to the location of the PK nail above the Cast Iron Monument

The Minnesota Department of Transportation accepts the PK nail at the surface of the bituminous road above the cast iron monument as the correct location of the North Quarter Corner of Section 33.

For details and survey analysis, contact the Minnesota Department of Transportation District Surveys Office in Baxter, Minnesota

MARILYN J. NOVAK  
COUNTY RECORDER

BY CK DEPUTY

OFFICE OF  
BENTON COUNTY RECORDER  
BENTON COUNTY, MN  
CERTIFIED TO BE FILED  
AND/OR RECORDED ON

293727

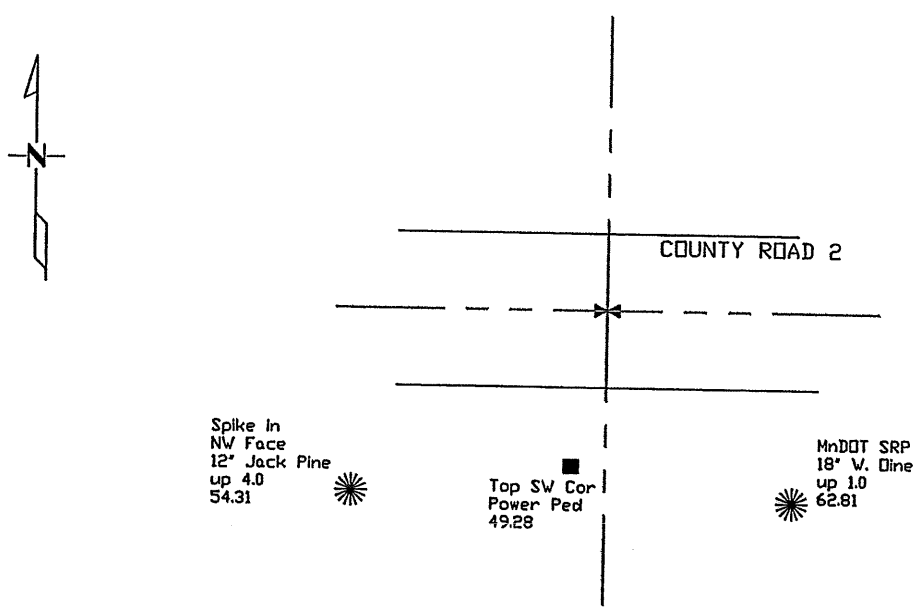
2002 DEC 31 P 3: 56

### CERTIFICATE OF LOCATION OF GOVERNMENT CORNER

North Quarter Corner of Section 33, Township 38, Range 31  
4TH Principal Meridian, State of Minnesota, County of BENTON

At the corner location shown on the sketch:

- On 07/19/01 found a cast iron monument  
DATE
- left monument as found     lowered monument     removed monument (explain)
- On 11/15/2002 placed a PK at the location of the cast iron monument  
DATE



New tree and power pole ties are to the head of a nail with a brass disk marked 'Corner Tie'.

Statement of evidence for this corner location is on back of this page.

I hereby certify that this document was researched and prepared by me or under my direct supervision and that I am a licensed Land Surveyor under the laws of the State of Minnesota.

Signature [Signature] Date 11/27/02 License No. 12684

Title:  Land Surveyor     Professional Engineer     County Surveyor     County Engineer

**Statement of Evidence:**

**D331**

The North Quarter Corner of Section 33, Township 38 North, Range 31 West, East Langola Township, 4<sup>th</sup> Principal Meridian, Benton County, Minnesota.

In June 1852, Edwin James Jr. set a wood post in a mound at this location.

This corner is noted on the following recorded plats

<i>GEORGE ADDITION</i>	<i>1/20/1981</i>	<i>William Lunser</i>	
<i>FROMLET ADDITION</i>	<i>3/19/1990</i>	<i>David P. Regan</i>	
<i>BROCKA ADDITION</i>	<i>1/31/2000</i>	<i>David P. Regan</i>	<i>CIM</i>
<i>BROCKA FIRST ADDITION</i>	<i>1/31/2000</i>	<i>David P. Regan</i>	<i>CIM</i>

On August 25, 1972 William Lunser set a RR spike at the centerline of County Road 2 and at distances proportionate to the Benton County Highway stationing. A Certificate of Location (#133449) was filed. A distance of 2676.57 feet was measured to both the NW and NE Corners of Section 33.

On November 24, 2000 Sam Deleo found a RR spike at the corner location. He replaced the RR spike with a cast iron monument and he filed a Certificate of Location (#271526). A distance of 2676.88 feet to the NW Corner of Section 33 and a distance of 2676.52 to the NE Corner of Section 33 was recorded.

On July 19, 2001 Westwood Professional Services, Inc. found a cast iron monument at the corner location that fit with ties.

In April 2002 Westwood Professional Services, Inc. located monuments along County Road 2, prior to road construction, using GPS. Distances to quarter corners east and west checked well with Lunser's.

On November 15, 2002 Westwood Professional Services, Inc. set a PK at the location of the found cast iron monument after the road construction.

County Coordinates Obtained by GPS  
NAD 83 (1996 Adjustment)  
N-169620.413  
E-460157.509

271526

OFFICE OF  
BENTON COUNTY RECORDER  
BENTON COUNTY, MN  
CERTIFIED TO BE FILED  
AND/OR RECORDED ON

JAN 30 4 04 PM '01

ALICE C. ENGELMEYER  
COUNTY RECORDER

BY mm DEPUTY xm

# CERTIFICATE OF LOCATION OF GOVERNMENT CORNER

NORTH QUARTER Corner of Section 33, Township 38 N, Range 31 W  
4th Principal Meridian, State of Minnesota, County of BENTON

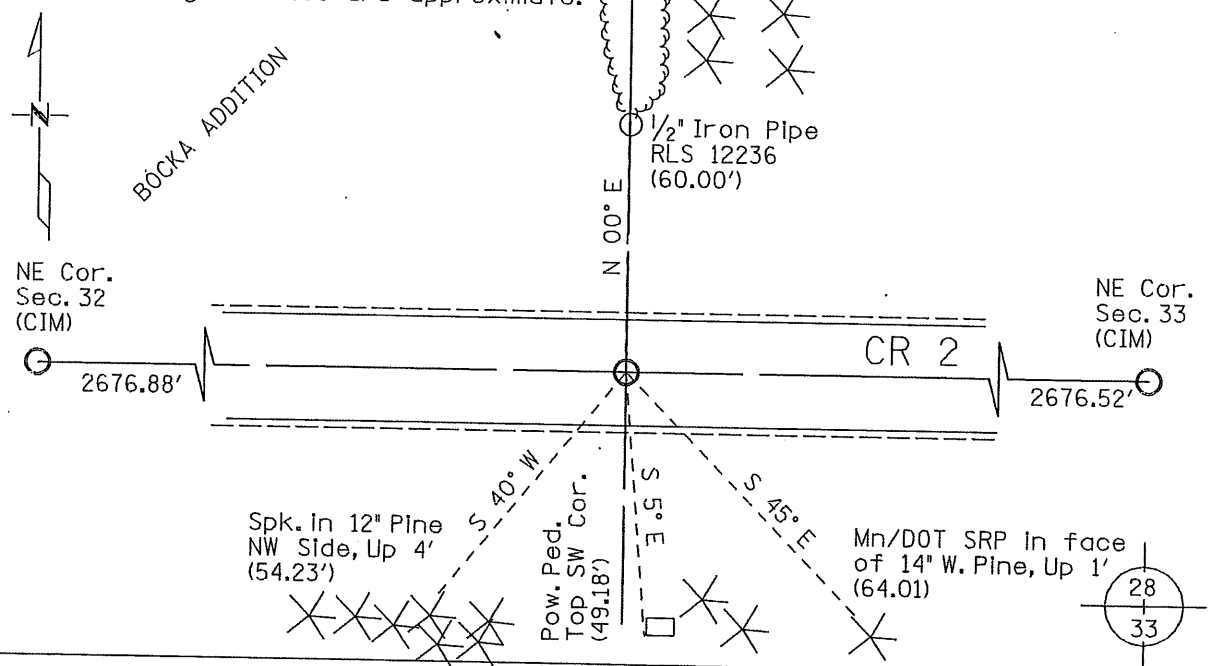
At the corner location shown on the sketch:

On 11/10/2000 found a RAILROAD SPIKE, DOWN 0.1'  
DATE

left monument as found     lowered monument     removed monument (explain)

On 11/24/2000 placed a STANDARD BENTON COUNTY CAST IRON MONUMENT, DOWN 0.3'  
DATE

Note: Bearings to ties are approximate.



Statement of evidence for this corner location is on back of this page.

I hereby certify that this document was researched and prepared by me or under my direct supervision.

Signature Samuel J. Deleo Date 1-15-2001 License No. 40341  
Title:  Land Surveyor     Professional Engineer     County Surveyor     County Engineer

Statement of Evidence

North Quarter Corner of Section 33, Twp. 38 N, Rng. 31 W  
4<sup>th</sup> P.M., Benton County, Minnesota

Copies of notes from the original GLO survey, located in the office of the Benton County Highway Department, state that a wood post was set in a mound with a pit 8 links East to mark the corner, distant 40.49 chains West from the NE Cor. of Sec. 33.

August 1972; William Lunser, RLS #9394, perpetuated the location of the corner by the evidence of the centerline of Co. Rd. No.2 and distances to the east and west proportioned to Benton County highway stationing. A railroad spike was set to mark the corner. He recorded reference ties and filed a Certificate of Location of Government Corner. Refer to Document No. 133449 in the Office of the Benton County Recorder.

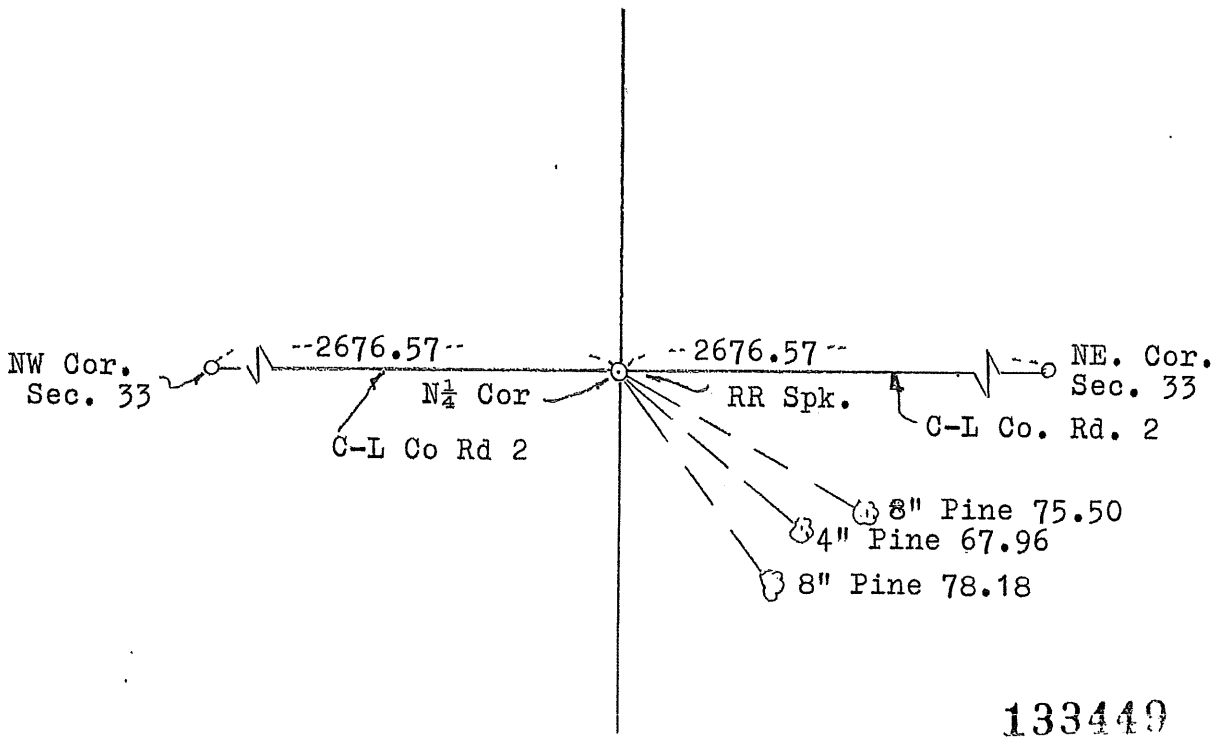
November 2000; Sam DeLeo, RLS #40341, found a railroad spike on centerline and in the bituminous surface of Co. Rd. #2. The railroad spike was removed and replaced with a Benton County cast iron monument. New ties were recorded and a new Certificate of Location of Government Corner was made.

*Langala*

# CERTIFICATE OF LOCATION OF GOVERNMENT CORNER

I hereby certify that on the 25 day of August, 1972  
I did restore the north quarter corner of Section 33,  
Twp. 38, Rg. 31, Benton County, Minnesota, which  
was evidenced by centerline Co. Rd. No. 2 and distances to east  
and west proportioned to Benton county highway stationing.

I further certify that in order to perpetuate said corner I did  
at the exact location thereof place a permanent marker consisting  
of a railroad spike and that  
I did establish witness or reference monuments as shown below:



I hereby certify that the  
above is true and correct  
and that I am a registered  
Land Surveyor under the laws  
of the State of Minnesota.

*William J. Jones*

Minn. Registration No. 9394

Office of the Register of Deeds,  
Benton County, Minn.

I hereby certify that the within  
instrument was filed for record  
in this office on the 9th day of  
February, 1973.

*J. A. Johnson*  
Register of Deeds

By *Marilyn Novak* Deputy.