

Certified, Filed and or Recorded on
October 28, 2014 12:57 PM

BENTON COUNTY MINNESOTA
MARILYN J NOVAK
COUNTY RECORDER

By: CK

6 -- V -- 1

CERTIFICATE OF LOCATION OF GOVERNMENT CORNER

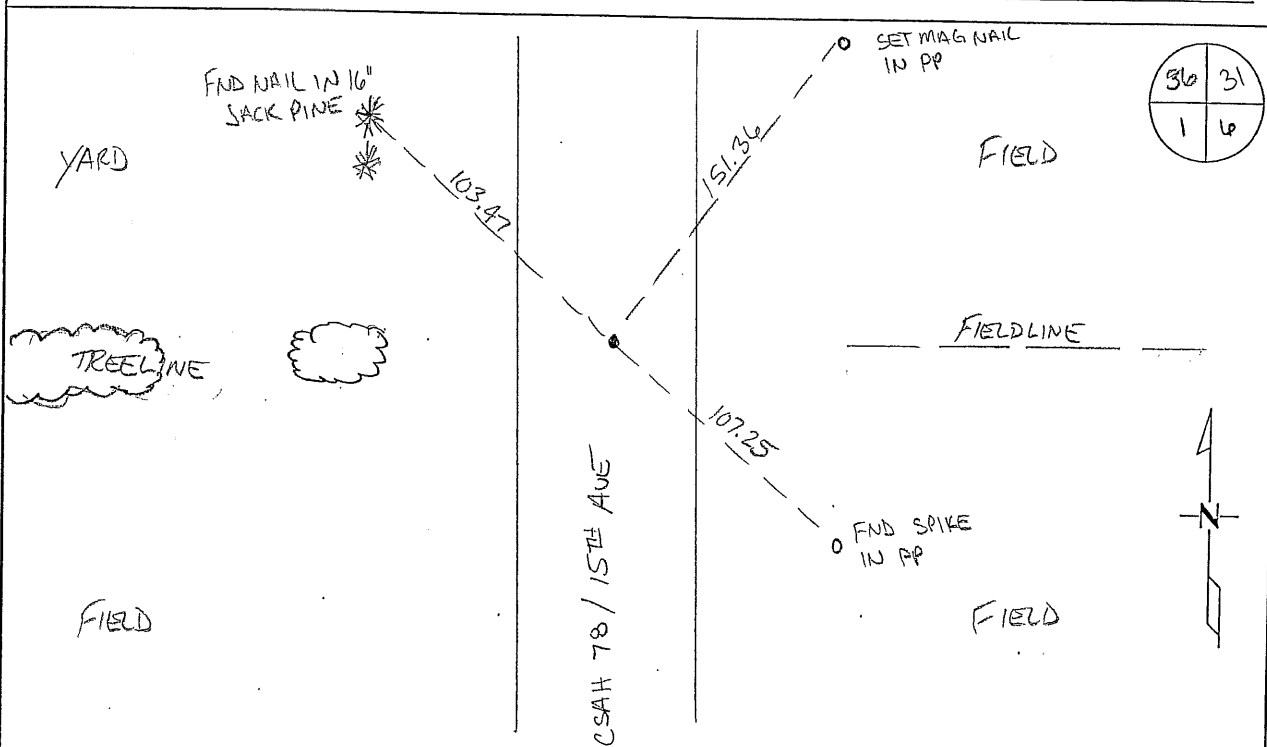
NORTHEAST Corner of Section 1, Township 38, Range 31
4TH Principal Meridian, State of Minnesota, County of Benton

At the corner location shown on the sketch:

On 08/08/2011 found a CAST IRON MONUMENT

left monument as found lowered monument removed monument (explain)

On _____ placed an _____



Statement of evidence for this corner location is on back of this page.

I hereby certify that this document was researched and prepared by me or under my direct supervision and that I am a licensed Land Surveyor under the laws of the State of Minnesota.

Signature Jerome C. Wittstock
Benton County Surveyor
License No. 19552

Date: 28 Oct. 2014

Benton County Surveyor's Office
 Jerome C. Wittstock, County Surveyor
 Minnesota License No. 19552

Statement of Evidence:**D012**

Northeast Corner of Section 1 Township 38 North, Range 31 West, East Langola Township,
 4th Principal Meridian, Benton County, Minnesota.

1849 Original US General Land Office survey established this corner and set a wood post in a mound with pit 6 links south.

1873 County Surveyor's Record Book 2, page 79 contains a road survey by C. Feller for road running south from this corner.

1941 County Engineer's Notebook No. 151 contains a road survey for CAR 32 running south to north on township line and terminating at the County line. Corner is shown marked by a hub set in center of road on fence line east. Ties:

Cor. FPE 44.1'

FP SE 56.9'

1994 Kevin Festler, LS 22702, determined the corner by obliterated means and set a cast iron monument at the intersection of a fence/field line west and County Road 78 (running north and south). He found no trace of a monument. He filed Certificate of Location (#226894).

1995 Comstock and Davis performed GPS work under contract with Benton County and Coordinates Obtained by GPS NAD 83 (1986 Adjustment) to a CIM:

N- 196325.08

E- 478240.774

2001 Westwood Professional Services, Inc. found a cast iron monument at the centerline of County Road 78 (running north and south) and a tree line from the west.

2011 The Benton County Surveyor's Office found the cast iron monument in the north-south centerline of County Road 78 on a fence line to the west. Measurement south is 7.64 feet short of the 1941 distance to the east quarter corner of Section 1, being a found railroad spike on a fence west. Since the 1941 location fell on a fence and in the north-south centerline, though it was it fence east and not west, and the measurement south fits within reason of the 1941 distance, the cast iron monument is accepted as marking the obliterated corner position.

Coordinates Obtained by GPS

NAD 83 (1996 Adjustment) to the CIM:

N- 196325.529

E- 478240.212

CERTIFICATE OF LOCATION OF GOVERNMENT CORNER

Northeast _____ Corner of Section 1, Township 38, Range 31, 4th P.M.
STATE OF MINNESOTA, County of Benton

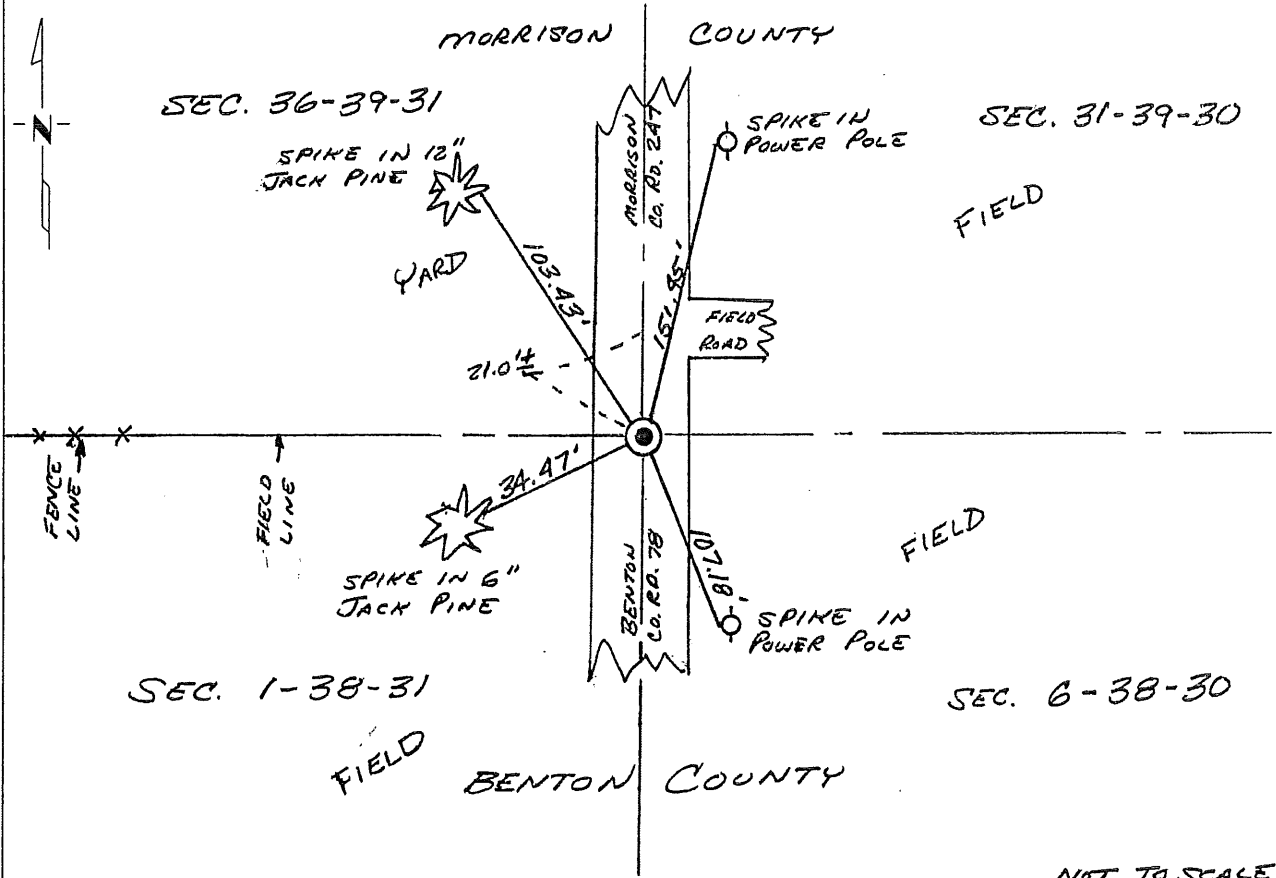
At the corner location shown on the sketch:

On 6-23-94 found a nothing
DATE

left monument as found, lowered monument, removed monument (explain)

On 9-23-94 placed a Benton County Cast Iron Monument
DATE

SKETCH OF REFERENCE TIES



NOT TO SCALE

Statement of evidence relative to this corner location is on back of page.

I hereby certify that this document and the data contained herein was prepared by me or under my direct supervision.

[Signature] Nov 14, 1994
SIGNATURE DATE

Registration No. 22702

- Land Surveyor, Professional Engineer
- County Surveyor, County Engineer

OFFICE OF THE COUNTY RECORDER
County of _____

I hereby certify that this document was filed in the Co. Recorders office at _____ .M. on the _____ day of _____ A.D., 19 _____

County Recorder _____

By _____, Deputy

DOCUMENT NO. _____

Statement of Evidence:

The northeast corner of Section 1, Township 38, Range 31, 4th Principal Meridian, Benton County, Minnesota, was set under the Public Land Survey as a post with bearing trees, in 1849. No trace of post or trees now exists.

A search by Benton Co. Highway personnel of available county survey records revealed no additional information on this corner.

On June 23, 1994, Comstock & Davis, Inc. while remonumenting section corners for the purpose of G.P.S. work for Benton County, searched at the position of the northeast corner of Sec. 1, Twp. 38, Ran. 31, at a field and fence line west and centerline of Benton County Road 78 and found nothing. Comstock & Davis, Inc. compared the location of the field and fence line and centerline to the original US Government Survey and found the position to be within reason of the Public Land Survey records. Comstock & Davis, Inc. accepted the field/fence line/centerline position as the position for the northeast corner of Section 1 and on Sept. 23, 1994, Comstock & Davis, Inc. placed a Benton County cast iron monument and made reference ties. Refer to Comstock & Davis, Inc. Job No. 945017.

226854

BENTON COUNTY RECORDER
BENTON COUNTY, MN
CERTIFIED TO BE FILED
AND PRESERVED

JAN 19 3 04 PM '95

ALICE G. MEYER
COUNTY CLERK

BY *[Signature]* DEPUTY