

428386

Certified, Filed and or Recorded on
March 22, 2018 12:10 PM

BENTON COUNTY MINNESOTA
CHERYL L. KANTOR
COUNTY RECORDER

By: BS

6 - v - 1

CERTIFICATE OF LOCATION OF GOVERNMENT CORNER

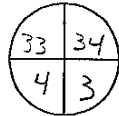
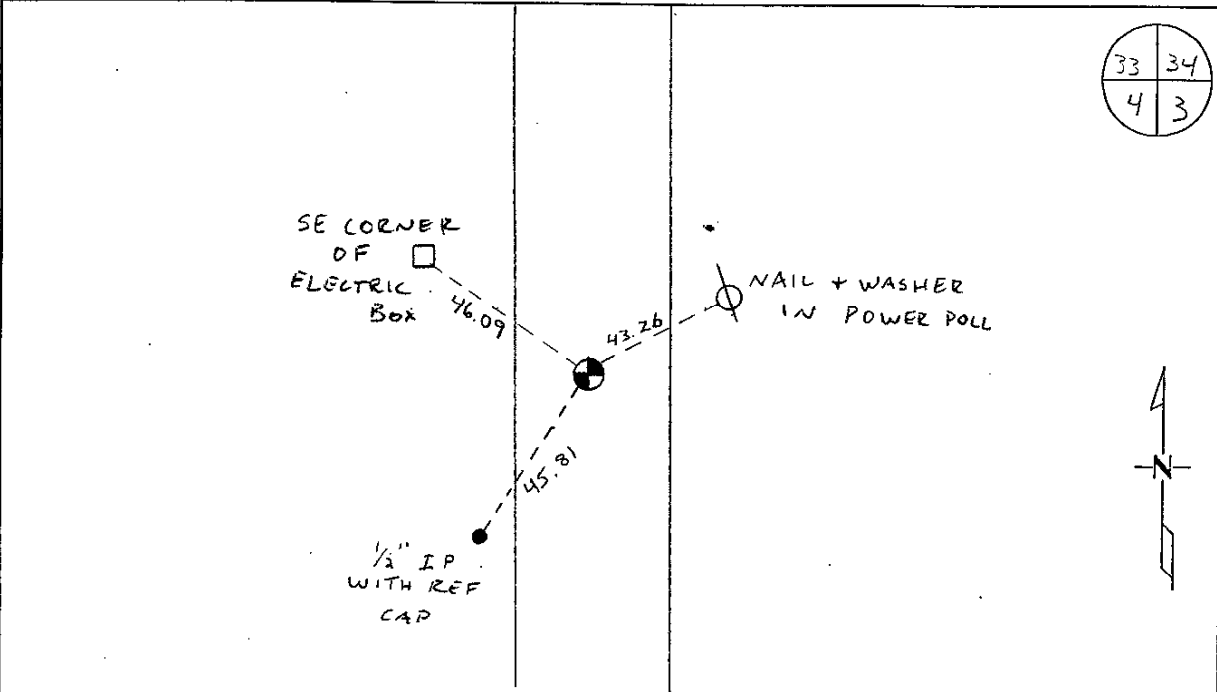
NORTHEAST Corner of Section 4, Township 38, Range 31
4TH Principal Meridian, State of Minnesota, County of Benton

At the corner location shown on the sketch:

On 2-15-12 found a CAST IRON MONUMENT

left monument as found lowered monument removed monument (explain)

On _____ placed on _____



Statement of evidence for this corner location is on back of this page.

I hereby certify that this document was researched and prepared by me or under my direct supervision and that I am a licensed Land Surveyor under the laws of the State of Minnesota.

Signature Jerome C. Wittstock
Benton County Surveyor
License No. 19552

Date: 20 March 2018

Benton County Surveyor's Office
 Jerome C. Wittstock, County Surveyor
 Minnesota License No. 19552

Statement of Evidence:**D042**

Northeast Corner of Section 4, Township 38 North, Range 31 West, East Langola Township, 4th Principal Meridian, Benton County, Minnesota.

- 1849 Original US General Land Office survey established this corner and set a wood post for the corner location with the following bearing trees marked:
- | | | |
|-------------|--------|-----------|
| 6" Bur Oak | N 22 E | 60 links |
| 10" Bur Oak | S 59 W | 126 links |
| 6" Bur Oak | S 69 E | 88 links |
- 1916 County Surveyor's Record Book 2, page 81, and Record Book A, Map No. 26 shows a survey of Section 3 by J.P. Soderstrum. He found an old marked stake between 2 fence posts. He measured 81.50 chains (5379.0 feet) south to the Southeast corner of Section 4.
- 1986 On June 6, 1986 Thomas Thiessen, LS 16097, dug an 8'x10'x3' hole and found no evidence of the corner. On October 25, 1986 Thomas Thiessen determined corner to be obliterated and set a cast iron monument at the intersection of Township Road 436 (running north and south) and occupation lines east and west. He filed a Certificate of Location (#308432-Morrison) and notes a distance of 2588.5 feet to the E1/4 Corner of Section 4.
- 1995 Comstock and Davis performed GPS work under contract with Benton County and Coordinates Obtained by GPS NAD 83 (1986 Adjustment) to a CIM:
 N- 196325.761
 E- 462130.043
- 2005 Found CIM.
 County Coordinates Obtained by GPS to a CIM:
 NAD 83 (1996 Adjustment)
 N- 196326.257
 E- 462129.405
- 2012 The Benton County Surveyor's Office found the CIM and verified the 2005 coordinates. The measurement along the west line of Section 4 fits within 3 feet per half mile with a 66-foot (one chain) blunder on the 1916 survey on both the east and west lines of Section 3, which was discovered after exhaustive research. The CIM fits alignment information to the east from the 1916. The CIM is accepted as marking the corner position.

CERTIFICATE OF LOCATION OF GOVERNMENT CORNER

NORTHEAST
Southeast

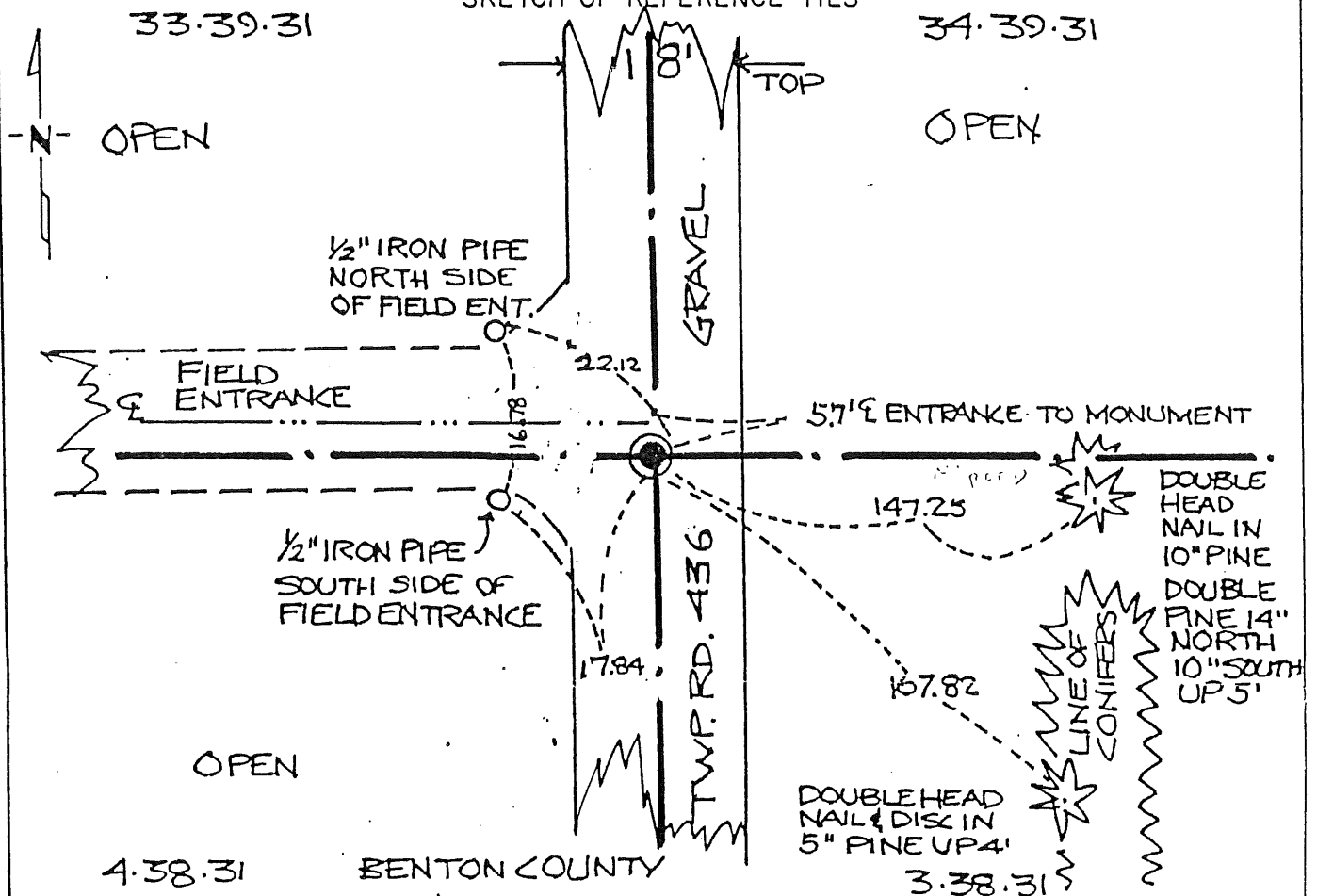
Corner of Section 4 33, Township' 38 39, Range 31 31, 4th P.M.

STATE OF MINNESOTA, County of Morrison

At the corner location shown on the sketch:

- On 6-9-86 found nothing in an 8' x 10' x 3' deep excavation.
DATE
- left monument as found, lowered monument, removed monument (explain)
- On 10-25-86 placed a cast iron monument
DATE

SKETCH OF REFERENCE TIES



Statement of evidence relative to this corner location is on back of page.

I hereby certify that this document and the data contained herein was prepared by me or under my direct supervision.

Thomas R. Johnson Dec 3 1986
SIGNATURE DATE

Registration No. 16097

Land Surveyor, Professional Engineer

County Surveyor, County Engineer

OFFICE OF THE COUNTY RECORDER

County of Morrison

I hereby certify that this document was filed in the Co. Recorders office at 11 A .M. on the 18 day of Dec. A.D., 19 86

County Recorder James R. Anderson

By Leslie M. Johannes, Deputy

DOCUMENT NO. 308432 MICROFILMED