

Certified, Filed and or Recorded on
November 19, 2014 8:57 AM

BENTON COUNTY MINNESOTA
MARILYN J NOVAK
COUNTY RECORDER

By: CK

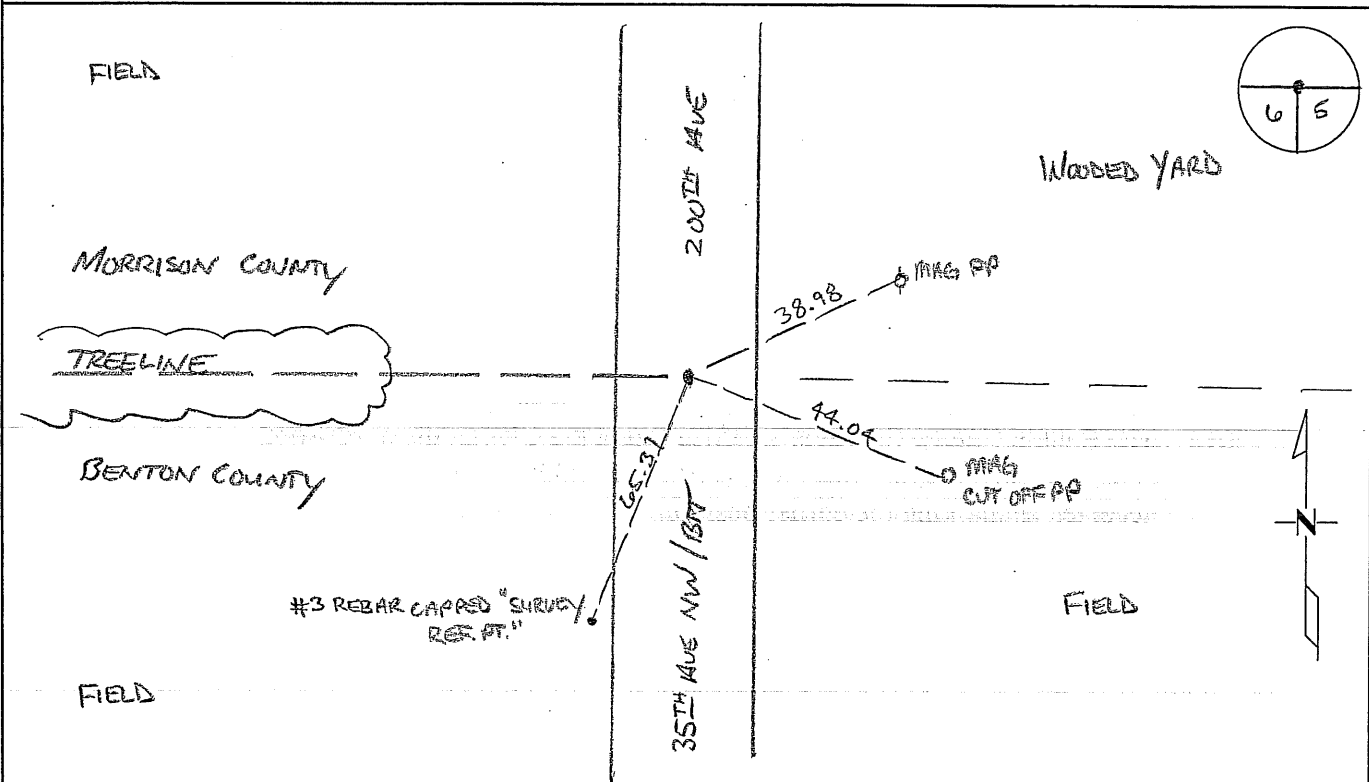
6--V--I

CERTIFICATE OF LOCATION OF GOVERNMENT CORNER

NORTHEAST Corner of Section 6, Township 38, Range 31
4TH Principal Meridian, State of Minnesota, County of Benton

At the corner location shown on the sketch:

- On 03/13/2014 found a CAST IRON MONUMENT DOWN O.S. FROM FINISHED SURFACE
- left monument as found lowered monument removed monument (explain)
- On _____ placed an _____



Statement of evidence for this corner location is on back of this page.

I hereby certify that this survey, plan, or report was prepared by me or under my direct supervision and that I am a duly Licensed Land Surveyor under the laws of the state of Minnesota.

Signature Jerome C. Wittstock
Jerome C. Wittstock, PS, CFedS, Benton County Surveyor
License No. 19552

Date: 11/18/2014

Benton County Surveyor's Office
Jerome C. Wittstock, County Surveyor
Minnesota License No. 19552

Statement of Evidence:

D062

Northeast Corner of Section 6, Township 38 North, Range 31 West, East Langola Township, 4th Principal Meridian, Benton County, Minnesota.

1849 Original US General Land Office survey set a wood post at this location and bearing trees were recorded.

8" Blk Oak S 31 W 227 links
6" Blk Oak S 18 E 242 links

1986 On June 9, 1986 Thomas Thiessen, LS 16097, dug with a backhoe an 8'X10'X3' deep hole and found nothing. He set a cast iron monument at obliterated corner using the centerline of road north/south and occupation lines east/west. He filed a Certificate of Location (#308431) in Morrison County.

2002 No resurvey information was found on this corner in the Benton County records.

2006 At this location neither the original GLO corner post nor bearing or line trees were found. Westwood Professional Services, Inc. found a CIM at the in the north-south centerline on occupation lines east and west per document number 308431. This corner location fits the original GLO distance west within 2 feet assuming a 2-pole busts and east within 12 feet assuming a 2-pole busts. Several half-miles along the north County line appear to measure approximately 33 or 66 feet (2 or 4 poles) long of 2640. I accepted the CIM as marking the obliterated position and obtained updated coordinates.

County Coordinates
NAD 83 (1996 Adjustment)
N- 196234.862
E- 451382.102

2014 The Benton County Surveyor's Office found the CIM in the north-south centerline on a tree line west and verified the 2006 coordinates. The CIM is accepted as marking the corner position.