

428597

Certified, Filed and or Recorded on
April 03, 2018 1:38 PM

BENTON COUNTY MINNESOTA
CHEYL L. KANTOR
COUNTY RECORDER

By: BS

6-V-1

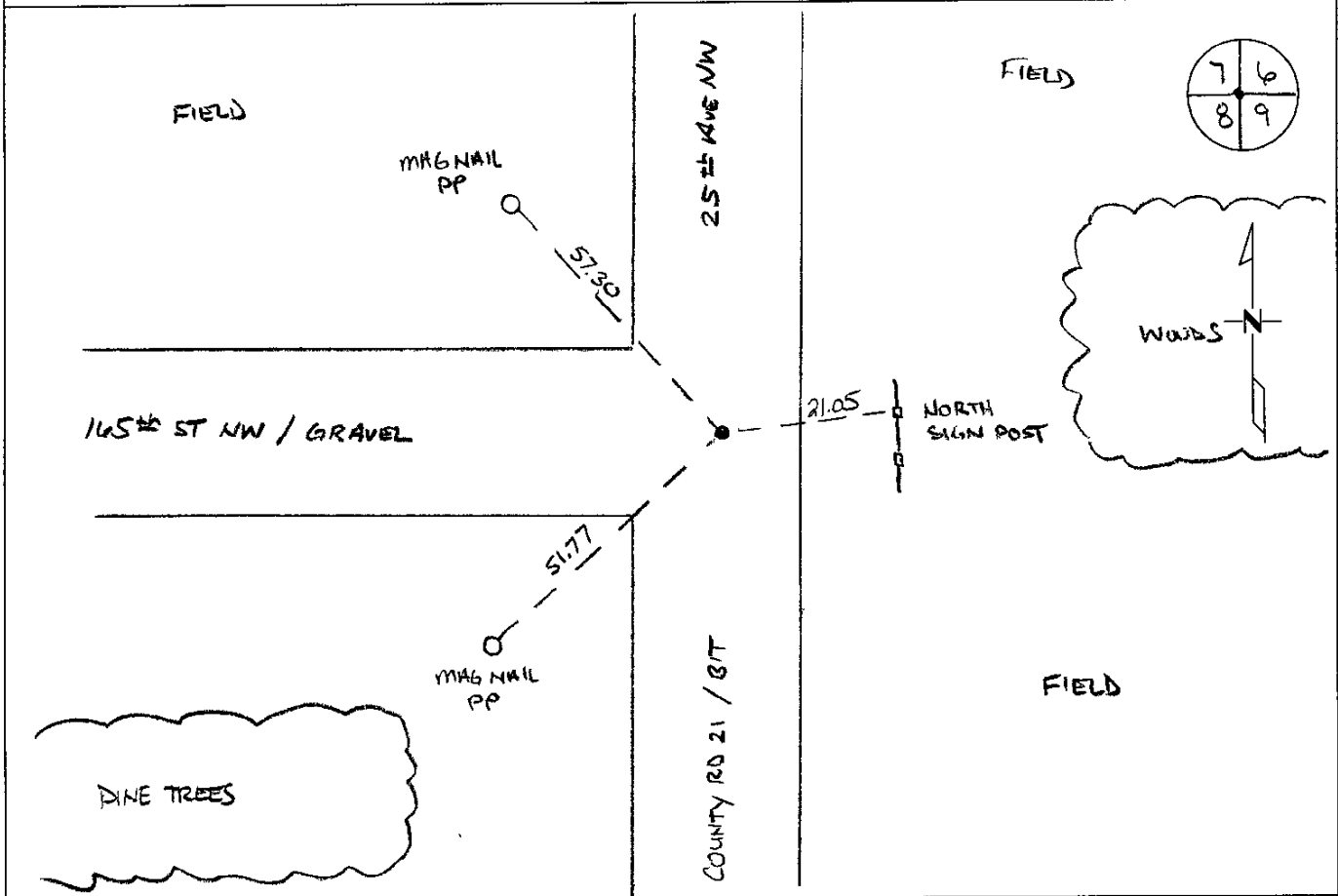
CERTIFICATE OF LOCATION OF GOVERNMENT CORNER

NORTHEAST Corner of Section 8, Township 38 North, Range 31 West, Fourth
Principal Meridian, Benton County, Minnesota.
At this corner location shown on the sketch:

On 11/24/2014 found a PK NAIL AT CENTERLINE PI

left monument as found lowered monument removed monument (explain)

On _____ placed an _____



Statement of evidence for this corner location is on back of this page.

I hereby certify that this document was researched and prepared by me or under my direct supervision and that I am a Licensed Land Surveyor under the laws of the State of Minnesota.

Signature Jerome C. Wittstock
Jerome C. Wittstock, P.S., CFedS
License No. 19552

Date: 4/2/2018

PAGE 1 OF 2

Benton County Surveyor's Office
 Jerome C. Wittstock, County Surveyor
 Minnesota License No. 19552

Statement of Evidence:**D082**

Northeast Corner of Section 8, Township 38 North, Range 31 West, East Langola Township, 4th Principal Meridian, Benton County, Minnesota.

1852 Original US General Land Office survey set a wood post in a mound with a pit 8 links south at the corner location.

1931 County Engineer's Notebook No. 64 contains road survey for CR "A" (21) by H. G. Elletson. Survey notes hub at corner with town road running west and ties as below. County Surveyor's Record Book 2, page 100, notes a hub with the following reference ties:

TP	NE	50.8'
3" Oak	E	45.9'

Stationing gives a deflection angle of 2-49 left (running north to south) from the SE corner of Section 8 to the East ¼ corner of Section 5

1957 County Engineer's Notebook No. 206 contains a survey for CSAH No. 21 running south to north on the section line. Corner is shown as a spike set in center of road with town road west. Ties;

9" W Oak	E	46.0
PP	SW	54.0

Stationing gives a deflection angle of 2-14 ½' left (running north to south) from the SE corner of Section 8 to the East ¼ corner of Section 5

2003 6/25/03 Surveying & Engineering Professionals, Inc. found a PK nail in center of north-south road.

County Coordinates determined from SEPI traverse:

NAD 83 (1996 Adjustment)

N- 190849.006

E- 457165.468

2014 The Benton County Surveyor's Office found the PK nail in the north-south centerline of the projection of the centerline of 165th St NW to the west, and verified the 2003 coordinates. A 17" oak tree fitting the 1931 and 1957 description fit within 0.5 feet. The position fits the 1957 distance north flat and is 14 feet short of the 1957 distance south (see quarter corners north and south for more information). The PK nail is accepted as marking the corner position.

425219

Certified, Filed and or Recorded on
September 22, 2017 1:59 PM

BENTON COUNTY MINNESOTA
CHERYL L. KANTOR
COUNTY RECORDER

By: KB

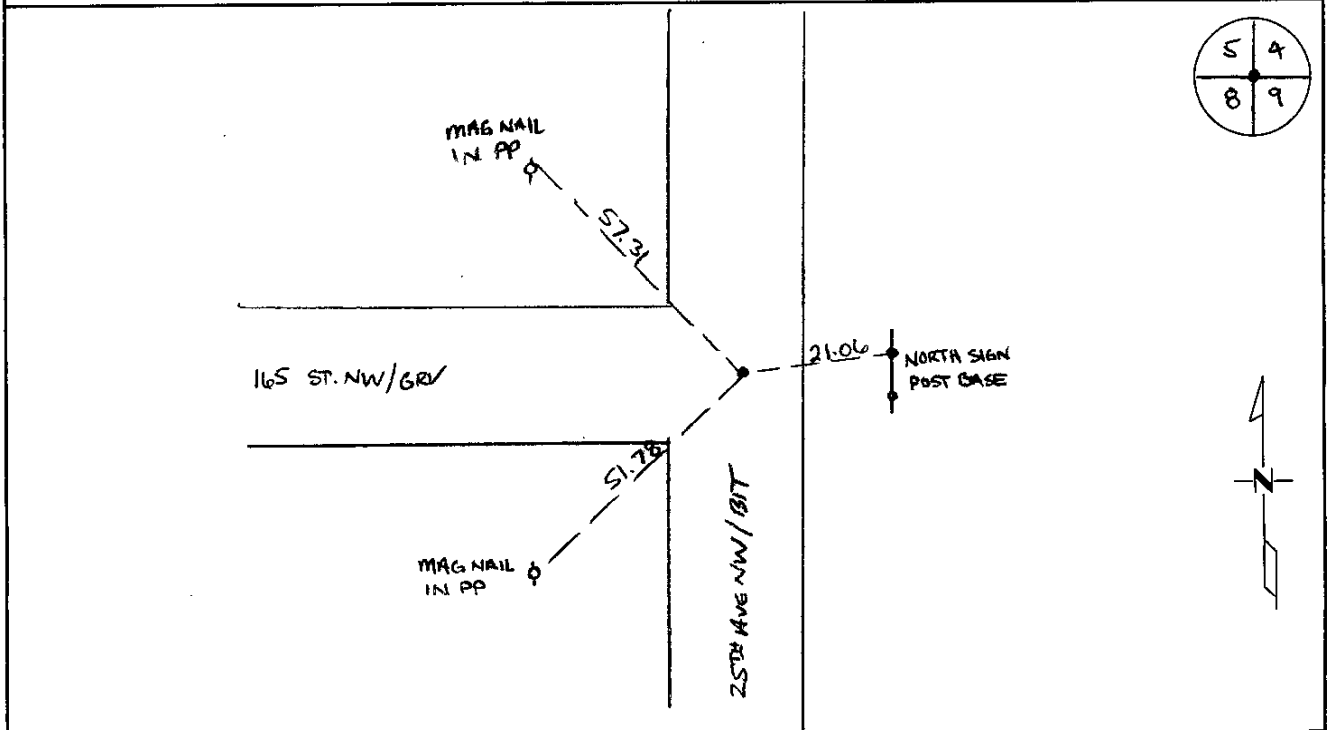
6--V--I

CERTIFICATE OF LOCATION OF GOVERNMENT CORNER

NORTHEAST Corner of Section 8, Township 38, Range 31
4TH Principal Meridian, State of Minnesota, County of Benton

At the corner location shown on the sketch:

- On 03/13/2014 found a PK NAIL AT CENTERLINE N/S/W, PULLED PK AND FOUND NOTHING BELOW AND THEN RESET PK IN ORIGINAL LOCATION
- left monument as found lowered monument removed monument (explain)
- On _____ placed an _____



Statement of evidence for this corner location is on back of this page.

I hereby certify that this survey, plan, or report was prepared by me or under my direct supervision and that I am a duly Licensed Land Surveyor under the laws of the state of Minnesota.

Signature Jerome C. Wittstock
Jerome C. Wittstock, PS, CFedS, Benton County Surveyor
License No. 19552

Date: 20 Sept. 2017

Benton County Surveyor's Office
 Jerome C. Wittstock, County Surveyor
 Minnesota License No. 19552

Statement of Evidence:**D082**

Northeast Corner of Section 8, Township 38 North, Range 31 West, East Langola Township, 4th Principal Meridian, Benton County, Minnesota.

1852 Original US General Land Office survey set a wood post in a mound with a pit 8 links south at the corner location.

1931 County Engineer's Notebook No. 64 contains road survey for CR "A" (21) by H. G. Elletson. Survey notes hub at corner with town road running west and ties as below. County Surveyor's Record Book 2, page 100, notes a hub with the following reference ties:

TP	NE	50.8'
3" Oak	E	45.9'

Stationing gives a deflection angle of 2-49 left (running north to south) from the SE corner of Section 8 to the East ¼ corner of Section 5

1957 County Engineer's Notebook No. 206 contains a survey for CSAH No. 21 running south to north on the section line. Corner is shown as a spike set in center of road with town road west. Ties;

9" W Oak	E	46.0
PP	SW	54.0

Stationing gives a deflection angle of 2-14 ½' left (running north to south) from the SE corner of Section 8 to the East ¼ corner of Section 5

2003 6/25/03 Surveying & Engineering Professionals, Inc. found a PK nail in center of north-south road.

County Coordinates determined from SEPI traverse:

NAD 83 (1996 Adjustment)

N- 190849.006

E- 457165.468

2014 The Benton County Surveyor's Office found the PK nail in the north-south centerline of the projection of the centerline of 165th St NW to the west, and verified the 2003 coordinates. A 17" oak tree fitting the 1931 and 1957 description fit within 0.5 feet. The position fits the 1957 distance north flat and is 14 feet short of the 1957 distance south (see quarter corners north and south for more information). The PK nail is accepted as marking the corner position.