

Certified, Filed and or Recorded on August 19, 2014 1:18 PM

BENTON COUNTY MINNESOTA  
MARILYN J NOVAK  
COUNTY RECORDER

By: BW

G - V - I

# CERTIFICATE OF LOCATION OF GOVERNMENT CORNER

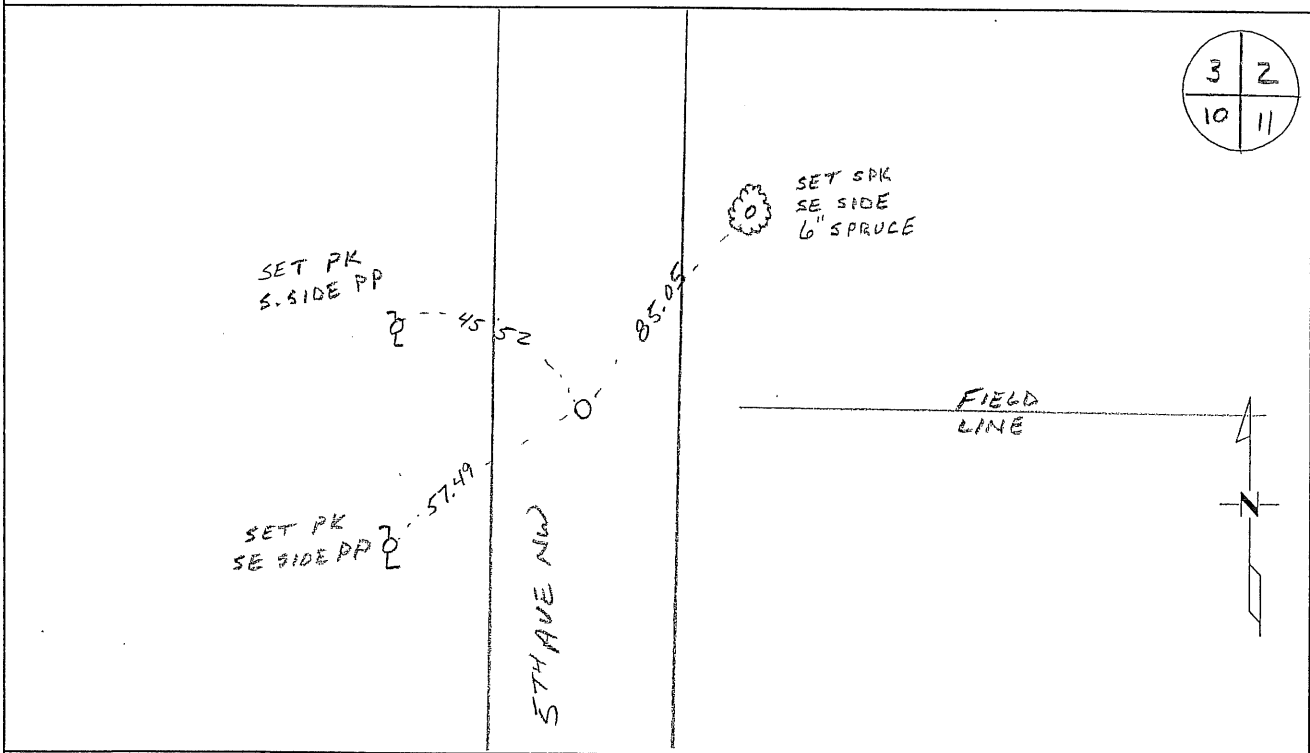
NORTHEAST Corner of Section 10, Township 38, Range 31  
4TH Principal Meridian, State of Minnesota, County of Benton

At the corner location shown on the sketch:

On \_\_\_\_\_ found a \_\_\_\_\_

left monument as found       lowered monument       removed monument (explain)

On 12-5-12 placed an 1/2" PIPE CAPPED 19552



Statement of evidence for this corner location is on back of this page.

I hereby certify that this survey, plan, or report was prepared by me or under my direct supervision and that I am a duly Licensed Land Surveyor under the laws of the state of Minnesota.

Signature Jerome C. Wittstock  
Jerome C. Wittstock, PS, CFedS, Benton County Surveyor  
License No. 19552

Date: 8-19-2014

Benton County Surveyor's Office  
 Jerome C Wittstock, County Surveyor  
 Minnesota License No. 19552

**Statement of Evidence:**

D102

Northeast Corner of Section 10, Township 38 North, Range 31 West, East Langola Township, 4<sup>th</sup> Principal Meridian, Benton County, Minnesota.

- 1852 Original US General Land Office survey set a wood post at this location and bearing trees were recorded.
- |            |            |          |
|------------|------------|----------|
| 8" Bur Oak | N 26 1/2 E | 57 links |
| 6" Bur Oak | S 46 W     | 36 links |
- 1915 County Surveyor's Record Book 2, page 31, and Record Book A, Map No. 26, shows a survey of Section 3 by J.P. Soderstrum. Map shows he set a granite monument at the intersection of the grading, based on testimony, and half way between 1/4 corners north and south, which is 1 1/2 links south of a fence line west. He gives distances of 40.04 1/4 chains to the 1/4 corners.
- 1916 County Road Book, page 80 contains a road survey by M. J. Cleveland, District Engineer, for State Road No. 4. Survey shows corner found and road run north-south.
- 2012 The Benton County Surveyor's Office excavated a 10-foot by 16-foot hole 4 feet deep. No evidence of the 1915 stone was found and original topsoil was not identified. The fence line called for in 1915 was not found leaving the road and proportionate measure for resetting the corner. The centerline of County Road 56 was used for the east-west position and the corner was proportioned between the found stone at the northeast corner of Section 3 and the CIM at the east quarter corner of Section 10. A 1/2-inch by 14-inch iron pipe capped 19552 was set to mark the position.