

Certified, Filed and or Recorded on
October 28, 2014 12:57 PM

BENTON COUNTY MINNESOTA
MARILYN J NOVAK
COUNTY RECORDER

By: CK

G -- V -- T

CERTIFICATE OF LOCATION OF GOVERNMENT CORNER

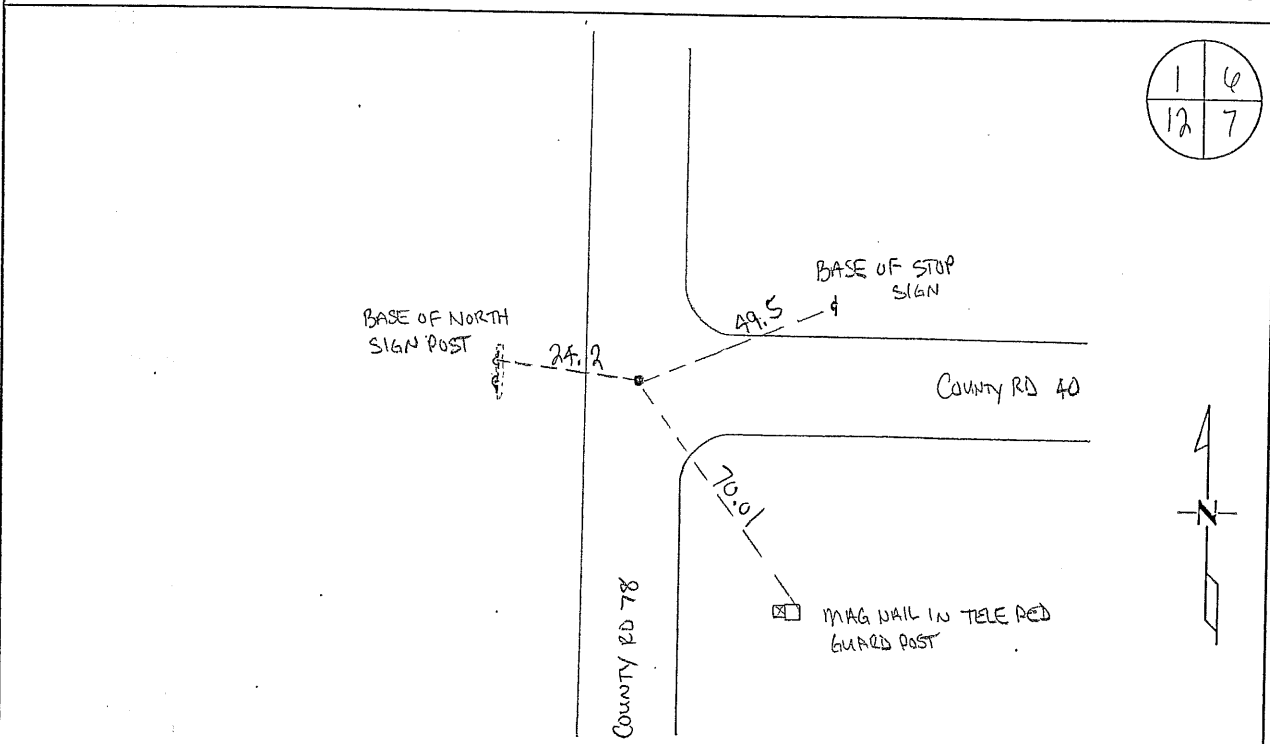
NORTHEAST Corner of Section 12, Township 38, Range 31
4TH Principal Meridian, State of Minnesota, County of Benton

At the corner location shown on the sketch:

On 08/08/2011 found a CAST IRON MONUMENT AT 4 & 4

left monument as found lowered monument removed monument (explain)

On _____ placed on _____



Statement of evidence for this corner location is on back of this page.

I hereby certify that this document was researched and prepared by me or under my direct supervision and that I am a licensed Land Surveyor under the laws of the State of Minnesota.

Signature Jerome C. Wittstock
Benton County Surveyor
License No. 19552

Date: 28 Oct. 2014

Benton County Surveyor's Office
 Jerome C. Wittstock, County Surveyor
 Minnesota License No. 19552

Statement of Evidence:

D122

Northeast Corner of Section 12, Township 38 North, Range 31 West, East Langola Township, 4th Principal Meridian, Benton County, Minnesota.

- 1849 Original US General Land Office survey set a wood post in a mound at the corner location.
- 1934 County Engineer's Notebook No. 74 contains survey for Road "O" running from east to west and then south. Notes corner as a spike with town road north. Ties:
- | | | |
|----|----|-------|
| TP | NW | 32.6' |
| TP | NE | 39.2' |
- 1941 County Engineer's Notebook No. 151 contains a road survey for CAR 41 running south to north on township line. Corner is shown marked by a hub set in center of road.
- 1946 County Highway ties show an iron at the corner with the following reference ties:
- | | | |
|-----------------|----|------|
| TP | NE | 44.7 |
| North sign post | W | 32.7 |
- 1962 Notebook No. 151 shows iron placed for corner with ties:
- | | | |
|--------------|----|------|
| W. End Culv. | | 62.8 |
| E. End Culv. | | 67.6 |
| TP | NE | 44.6 |
| Sign Post | W | 20.4 |
- 1962 County Engineer's Notebook No. 230 contains a road survey for CSAH 15 running south to north on township line. Corner is shown marked by an iron in center of road with road east. Ties:
- | | | |
|-----------|----|------|
| TP | NE | 44.7 |
| N. Sign P | W | 32.7 |
- 1964 County Engineer's Notebook No. 276 contains a road survey for CSAH No. 22 running east from this corner. Notes show corner marked by an iron in center of road intersection. Ties:
- | | | |
|-----------------|----|-------|
| Stop Sign Post | NE | 49.5 |
| North Sign Post | W | 24.2 |
| TP | NE | 44.85 |
- 1964 County Surveyor's Record Book 2, pages 84 and 108 shows an iron (also 1974) with the following reference ties:
- | | | |
|-----------------|----|------|
| North sign post | W | 24.2 |
| Stop sign post | NE | 49.5 |
- 2008 Westwood Professional Services found a cast iron monument.
 County Coordinates obtained by GPS
 NAD 83 (1996 Adjustment)
 N- 191142.087
 E- 478437.734
- 2011 The Benton County Surveyor's Office found the cast iron monument reported in 2008 falling in the north-south centerline of County Road 78 on the centerline of CSAH 22 to the east. The monument measures 3.1 feet long north and 0.3 feet short south of the 1941 distances and 1.3 feet long of the 1934 distance east. Since the monument falls at the intersection of roads and fits the resurvey distances well, the cast iron monument is accepted as marking the obliterated corner position. The 2008 coordinates were verified.