

Certified, Filed and or Recorded on
October 28, 2014 12:57 PM

BENTON COUNTY MINNESOTA
MARILYN J NOVAK
COUNTY RECORDER

By: CK

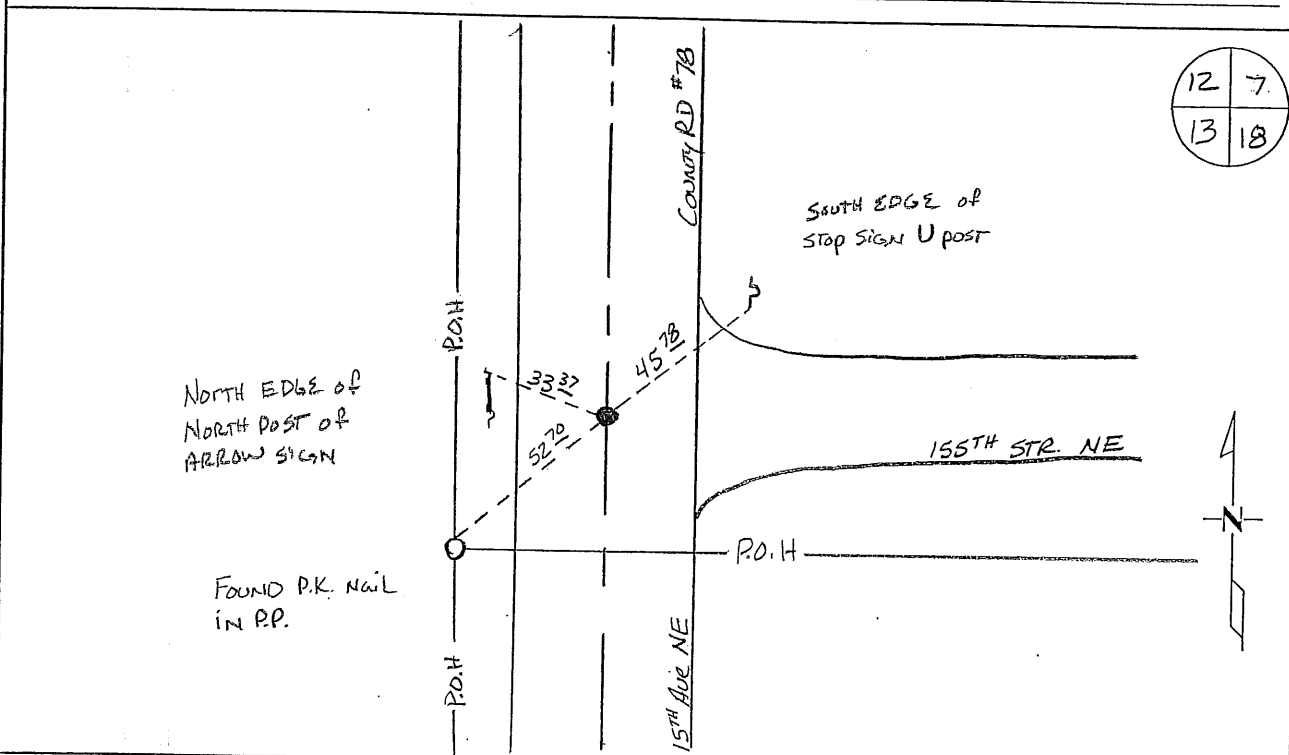
G - V - 1

CERTIFICATE OF LOCATION OF GOVERNMENT CORNER

NORTHEAST Corner of Section 13, Township 38 N, Range 31 W
4TH Principal Meridian, State of Minnesota, County of Benton

At the corner location shown on the sketch:

- On 05/27/2011 found a Cast IRON MONUMENT
- left monument as found lowered monument removed monument (explain)
- On _____ placed an _____



Statement of evidence for this corner location is on back of this page.

I hereby certify that this document was researched and prepared by me or under my direct supervision and that I am a licensed Land Surveyor under the laws of the State of Minnesota.

Signature Jerome C. Wittstock
Benton County Surveyor
License No. 19552

Date: 28 Oct. 2014

Benton County Surveyor's Office
 Jerome C. Wittstock, County Surveyor
 Minnesota License No. 19552

Statement of Evidence:

D132

Northeast Corner of Section 13, Township 38 North, Range 31 West, East Langola Township, 4th Principal Meridian, Benton County, Minnesota.

- 1849 Original US General Land Office survey set a wood post at this location and bearing trees were recorded.
- | | | |
|-------------|--------|-----------|
| 10" Bur Oak | S 42 | 362 links |
| 14" Bur Oak | N 49 W | 656 links |
- 1941 County Engineer's Notebook No. 151 contains a road survey for CAR 41 running south to north on township line. Corner is shown marked by a hub set in center of road with town road east and fence line west. Ties:
- | | | |
|----------------|----|-------|
| 12" Oak | SW | 32.4' |
| Twin Box Elder | NW | 34.5' |
- 1944 County Engineer's Notebook No. 164 contains a road survey for CAR 25 running east to west on section line and terminating at this corner. Corner is shown marked by a hub set in center of CAR 41 running north-south. Ties same as listed below in 1948.
- 1948 County Engineer's Notebook No. 51 contains ties:
- | | | |
|----------------|----|-------|
| 20" W. Oak | NE | 82.1' |
| Twin Box Elder | NW | 60.7' |
- 1962 County Engineer's Notebook No. 230 contains a road survey for CSAH 15 running south to north on township line. Corner is shown marked by an iron in center of road with CH 41 running east. 1964 ties as listed below.
- 1962 County Engineer's Notebook No. 151 contains ties to placed iron:
- | | | |
|------------|----|--------|
| 24" W. Oak | NE | 82.3' |
| PP | SW | 46.05' |
| Sign Post | W | 18.8' |
- 1964 County Surveyor's Record Book 2, page 110, notes an iron at the corner with the following reference ties.
- | | | |
|-----------|----|------|
| PP | SW | 52.7 |
| Cor FP | SE | 47.9 |
| Sign Post | W | 32.9 |
- 1964 M.W. Carley notes an iron at the corner with the following reference ties.
- | | | |
|------------|----|-------|
| 24" W. Oak | NE | 82.30 |
| PP | SW | 46.05 |
- 2001 Westwood Professional Services, Inc. found a cast iron monument at the centerline of County Road 78 (running north and south) and a gravel road east.
- 2011 The Benton County Surveyor's Office found the CIM at the intersection of centerlines north-south and east. The position fits the power pole and sign post ties from 1964. The position also fits the distance south a half mile from 1941 within two feet and north a half mile within a foot. The CIM is accepted as marking the corner position.

County Coordinates obtained by GPS
 NAD 83 (1996 Adjustment)
 N - 185760.397
 E - 478655.137