

Certified, Filed and or Recorded on  
October 28, 2014 12:57 PM

BENTON COUNTY MINNESOTA  
MARILYN J NOVAK  
COUNTY RECORDER

By: CK

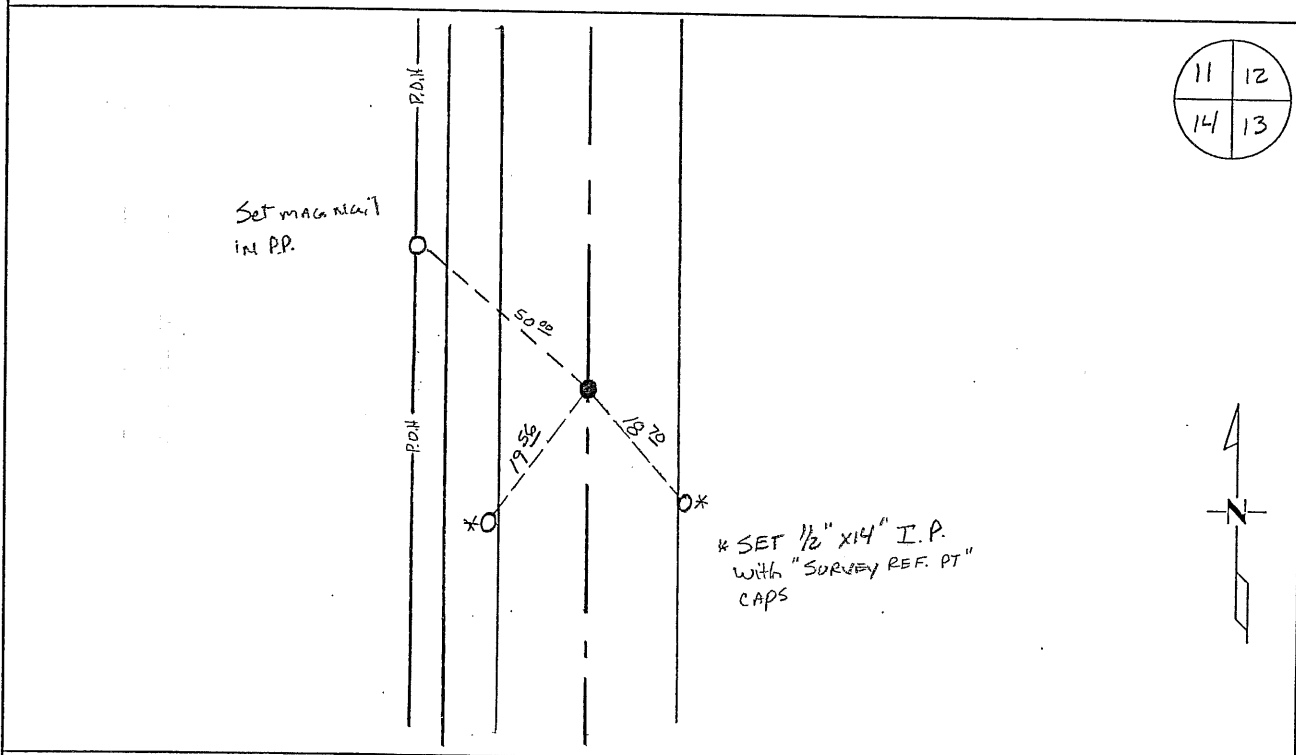
G -- V -- 1

# CERTIFICATE OF LOCATION OF GOVERNMENT CORNER

NORTHEAST Corner of Section 14, Township 38 N, Range 31 W  
4TH Principal Meridian, State of Minnesota, County of Benton

At the corner location shown on the sketch:

- On 05/27/2011 found a CAST IRON MONUMENT
- left monument as found       lowered monument       removed monument (explain)
- On \_\_\_\_\_ placed an \_\_\_\_\_



Statement of evidence for this corner location is on back of this page.

I hereby certify that this document was researched and prepared by me or under my direct supervision and that I am a licensed Land Surveyor under the laws of the State of Minnesota.

Signature Jerome C. Wittstock  
Benton County Surveyor  
License No. 19552

Date: 28 Oct. 2014

Benton County Surveyor's Office  
 Jerome C. Wittstock, County Surveyor  
 Minnesota License No. 19552

**Statement of Evidence:**

D142

Northeast Corner of Section 14, Township 38 North, Range 31 West, East Langola Township, 4<sup>th</sup> Principal Meridian, Benton County, Minnesota.

1852 Original US General Land Office survey set a wood post in a mound at the corner location.

1873 County Surveyor's Record Book 2, page 79, shows a road survey on section lines running north south by C. Feller.

1879 County Surveyor's Record Book 2, page 80, shows a road survey on section line from the north by Richard Cronk.

1999 William Lunser, LS 9394, set a cast iron monument at the centerline of a road north/south and at proportionate measurements to the GLO notes. He filed a Certificate of Location (#262728) and notes the following distances:

2656.84 feet to the East ¼ corner Sec 11

2683.40 feet to the North ¼ corner Sec 14

2656.84 feet to the East ¼ corner Sec 14

2008 Westwood Professional Services, Inc. found the cast iron monument set by Lunser in 1999. Measured 2656.86 feet to the E1/4 of Sec. 11, measured 2656.76 feet to the E1/4 of Sec. 14 and measured 2683.39 feet to the N1/4 of Sec. 14 which is consistent with Lunser certificate. Further analysis of tree line occupation at the 1/16<sup>th</sup> corners east and west were inconclusive, but still seemed to fit relatively well to the traveled road for the east/west position. No 1/16<sup>th</sup> occupation existed to the south. Tree line occupation at the 1/16<sup>th</sup> corner to the north was inconclusive as well with a tree line to the east measuring ~10 feet south of a split and a tree line to the west measuring ~14 feet north of a split. I agree with Lunser's method of holding the centerline of the road for east/west location and proportionate measure for north/south position. CIM is accepted as marking the obliterated position for this corner.

County Coordinates obtained by GPS

NAD 83 (1996 Adjustment)

N-185595.269

E-473368.983

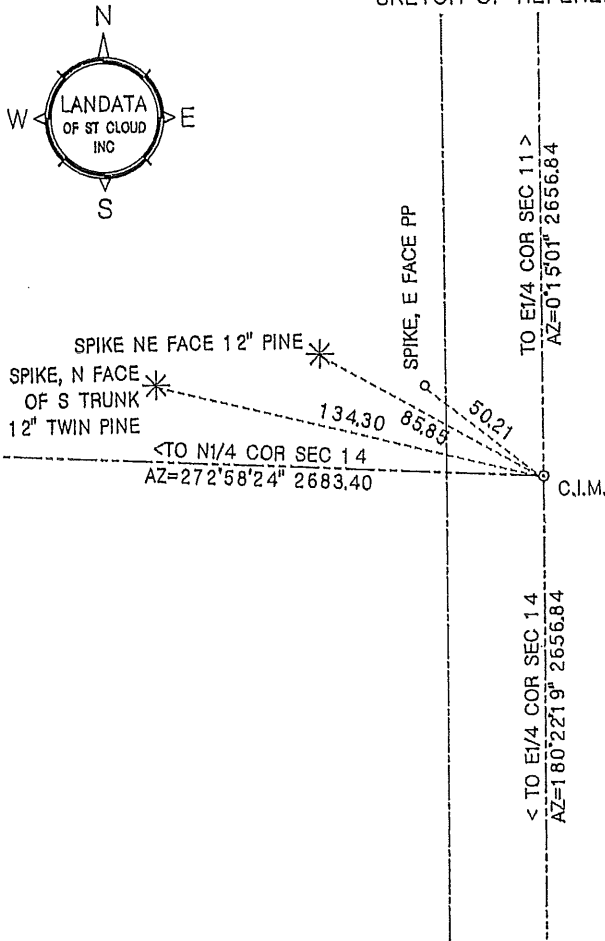
2011 The Benton County Surveyor's Office found the CIM and verified the 2008 coordinates.

# CERTIFICATE OF LOCATION OF GOVERNMENT CORNER

NORTHEAST corner of Section 14, Township 38, Range 31, 4th P.M.  
Benton County, Minnesota.

On Mar 24, 1999, A Benton Co, Cast Iron Monument (C.I.M.) was placed at this location.

### SKETCH OF REFERENCE TIES



Statement of evidence relative to this corner location on back of page

I hereby certify that this document and the data contained herein was prepared by me or under my direct supervision.

*William F. Lunser* 11/1/99  
 William F. Lunser, L.S. Date  
 Mn Reg No 9394

FB;156/02 DISC;14

OFFICE OF THE COUNTY RECORDER  
 Benton County, Minnesota

I hereby certify that this document was filed in this office at \_\_\_\_:\_\_\_\_ M. on the \_\_\_\_ day of \_\_\_\_\_, 19\_\_\_\_.

County Recorder \_\_\_\_\_

By \_\_\_\_\_ Deputy

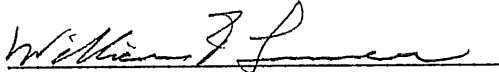
DOCUMENT NO. \_\_\_\_\_

STATEMENT OF EVIDENCE:

No records were found to indicate use or remonumentation of this corner after its original placement by the U.S. Government Survey.

A search of the area failed to uncover the marker. Occupation lines consist only of the centerline of road north and south.

Using the road centerline as an accessory to the corner's east-west location, a monument was set at a point proportionate to G.L.O. measurements of 40 chains between this corner and quarter corners to north and south.

  
William F. Lunser, L.S.

262728

OFFICE OF  
BERTON COUNTY RECORDER  
BERTON COUNTY, IN  
CERTIFIED TO BE FILED  
AND RECORDED FOR

DEC 1 8 52 AM '99

ALICE G. HARRIS  
COUNTY RECORDER

BY  ~~RECORDER~~