

Certified, Filed and or Recorded on
November 19, 2014 8:57 AM

BENTON COUNTY MINNESOTA
MARILYN J NOVAK
COUNTY RECORDER

By: CK

6--V--I

CERTIFICATE OF LOCATION OF GOVERNMENT CORNER

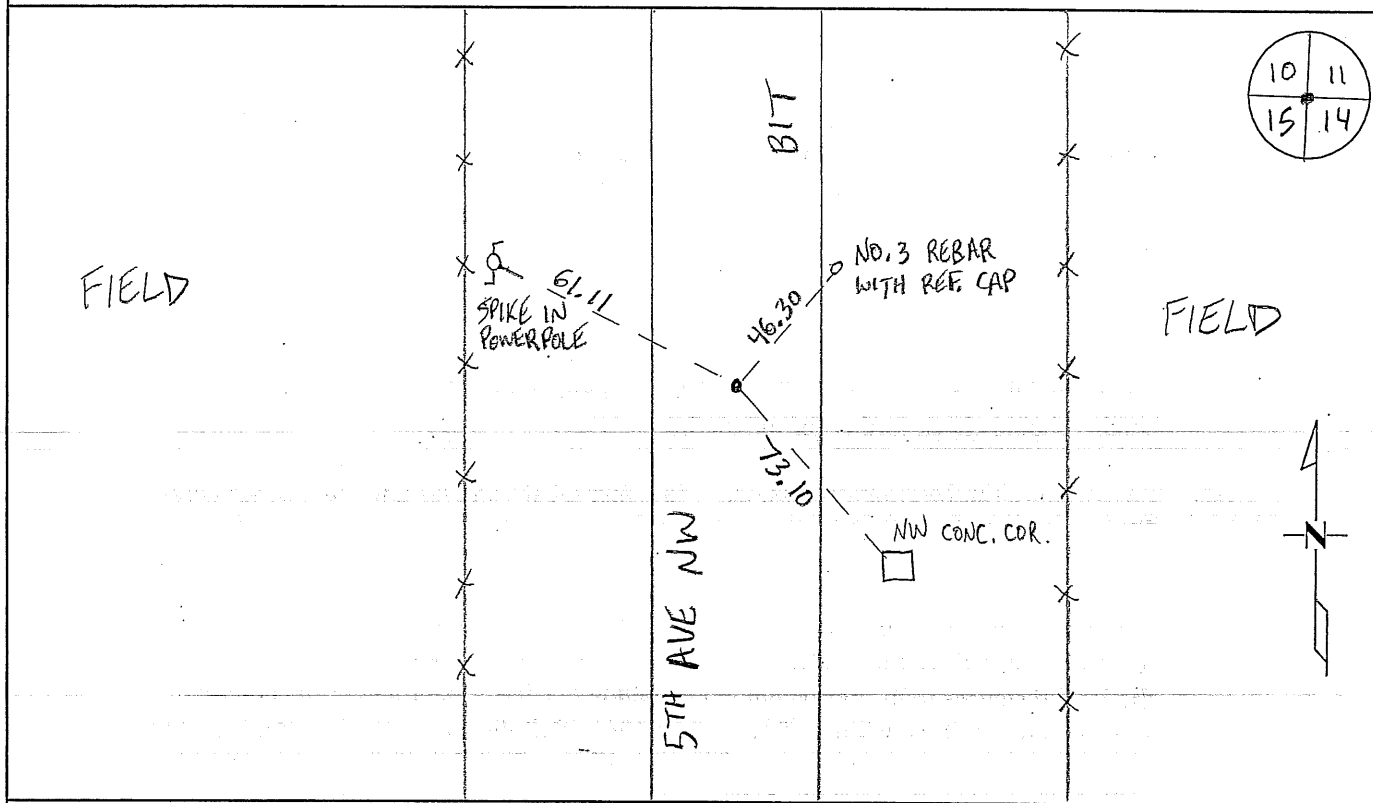
NORTHEAST Corner of Section 15, Township 38, Range 31
4TH Principal Meridian, State of Minnesota, County of Benton

At the corner location shown on the sketch:

On 3/13/2014 found a 1/2" IRON PIN WITH TOP BENT WEST

left monument as found lowered monument removed monument (explain)

On 11/12/2014 placed an 1/2" IRON PIPE WITH RLS CAP 19552



Statement of evidence for this corner location is on back of this page.

I hereby certify that this survey, plan, or report was prepared by me or under my direct supervision and that I am a duly Licensed Land Surveyor under the laws of the state of Minnesota.

Signature Jerome C. Wittstock
Jerome C. Wittstock, PS, CFedS, Benton County Surveyor
License No. 19552

Date: 11/18/2014

Benton County Surveyor's Office
 Jerome C. Wittstock, County Surveyor
 Minnesota License No. 19552

Statement of Evidence:**D152**

Northeast Corner of Section 15, Township 38 North, Range 31 West, East Langola Township, 4th Principal Meridian, Benton County, Minnesota.

- 1852 Original US General Land Office survey set a wood post in a mound with a pit 8 links east at the corner location and bearing tree marked:
 8" Bur Oak N 57 ½ W 903 links
- 1915 County Surveyor's Record Book 2, page 80, and Record Book A, Map No. 8, shows a survey of Section 10 by J. P. Soderstrum where he set this corner by double proportion (lost method) from the SW corner of Section 10, the East ¼ corner of Section 10, and the SE corner of Section 15 using the center of the road. He gives tie of T.P. N 65 E 26 links. (Distance of 82.19 chains to SW corner of Section 10 and 40.33 chains to the East ¼ corner of Section 10).
 Page 104 notes an iron at the corner with the same tie.
- 1916 County Road Book, page 80 contains a road survey by M. J. Cleveland, District Engineer, for State Road No. 4. Survey shows corner found and road run north-south.
- 1961 MN/DNR survey crew shows I.P. at the corner.
- 1977 MN/DNR survey crew set P.K. nail from PP tie NW 60.8'.
- 1999 William Lunser, LS 9394, did not find any marker for the corner. He set a cast iron monument on centerline tangent by proportionate distances between the SW corner Sec 15 and the East ¼ corner Sec 10. He filed a Certificate of Location (#262726) and notes a distance of 2677.38 feet to the North ¼ corner Sec 14 and a distance of 2668.49 feet to the East ¼ corner Sec 10 and a distance of 5336.90 feet to the SE corner Sec 15 along the road centerline.
- NOTE: Lunser's re-establishment of the corner appears to agree with how Soderstrum established the corner in 1915. Their distances being within 7 feet per ½ mile north-south. Should check further for old marker.
- 2004 Surveying & Engineering Professionals, Inc. found CIM and used for survey in Section 14.
- 2014 The Benton County Surveyor's Office found the CIM set by Lunser in 1999 and also found a 1/2" iron pin 10.67 feet north of the CIM believed to be the iron noted from 1915 to 1961. Using the found 1/2" iron pin, the half mile distance north fits proportionally to the 1915 distances to the north county line within 0.3 feet. The iron pin fits the mile south to a found stone within 1.5 feet of the 1961 DNR distance. The iron pin is accepted as marking the corner position, the CIM was pulled and a 1/2" x 14" iron pipe capped 19552 was set over the found iron pin.

County Coordinates obtained from GPS:
 NAD 83 (1996 Adjustment)
 N - 185658.393
 E - 468007.326

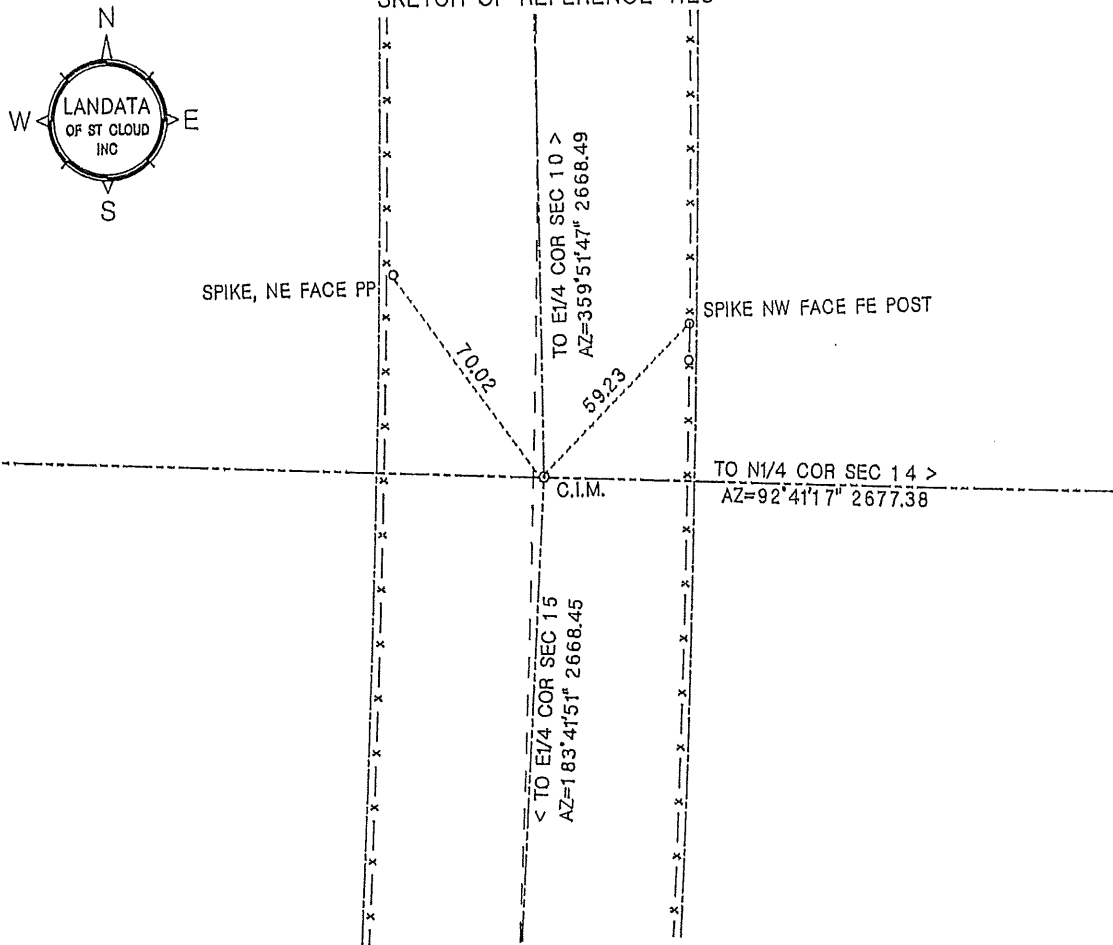
11/18/2014

CERTIFICATE OF LOCATION OF GOVERNMENT CORNER

NORTHEAST corner of Section 15, Township 38, Range 31, 4th P.M.
Benton County, Minnesota.

On Mar 24, 1999, A Benton Co, Cast Iron Monument (C.I.M.) was placed at this location.

SKETCH OF REFERENCE TIES



Statement of evidence relative to this corner location on back of page

I hereby certify that this document and the data contained herein was prepared by me or under my direct supervision.

William F. Lunser 11/1/99
William F. Lunser, L.S. Date

Mn Reg No 9394

FB;156/02 DISC;14

OFFICE OF THE COUNTY RECORDER
Benton County, Minnesota

I hereby certify that this document was filed in this office at _____ M. on the _____ day of _____, 19____.

County Recorder _____

By _____, Deputy

DOCUMENT NO. _____

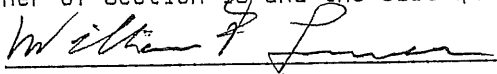
STATEMENT OF EVIDENCE:

County Surveyor's book in the office of the Benton County Highway Dept indicate a iron monument was placed at this corner.

A search of the area failed to uncover the marker. Occupation lines consist of centerline of a north-south road, there being no distinct lines of occupation east or west.

Due to the severe deflection angle the road centerline includes a horizontal curve, the tangents of which intersect at a point (P.I.) which was examined as the section corner. A Mr. Golden, land owner to the northwest and southwest of this corner, pointed out a line along the south edge of a planting of trees which he believed to be the north line of Section 15. Upon taking measurements along the north-south section line the tree line was found to agree with G.L.O. distances whereas the road P.I. lies considerably farther north.

The corner was therefor restored at a point on the northerly extension of the south centerline tangent by proportionate distances between the southwest corner of Section 15 and the east quarter corner of Section 10.


William F. Lunser, L.S.

262726

OFFICE OF
BENTON COUNTY RECORDER
BENTON COUNTY, ILL.
CERTIFIED TO BE FILED
AND/OR RECORDED ON

Dec 1 8 52 AM '99

ALICE M. TRUBB
COUNTY RECORDER

BY 