

Certified, Filed and/or Recorded on
November 19, 2014 8:57 AM

BENTON COUNTY MINNESOTA
MARILYN J NOVAK
COUNTY RECORDER

By: *ck*

6 - V - 1

CERTIFICATE OF LOCATION OF GOVERNMENT CORNER

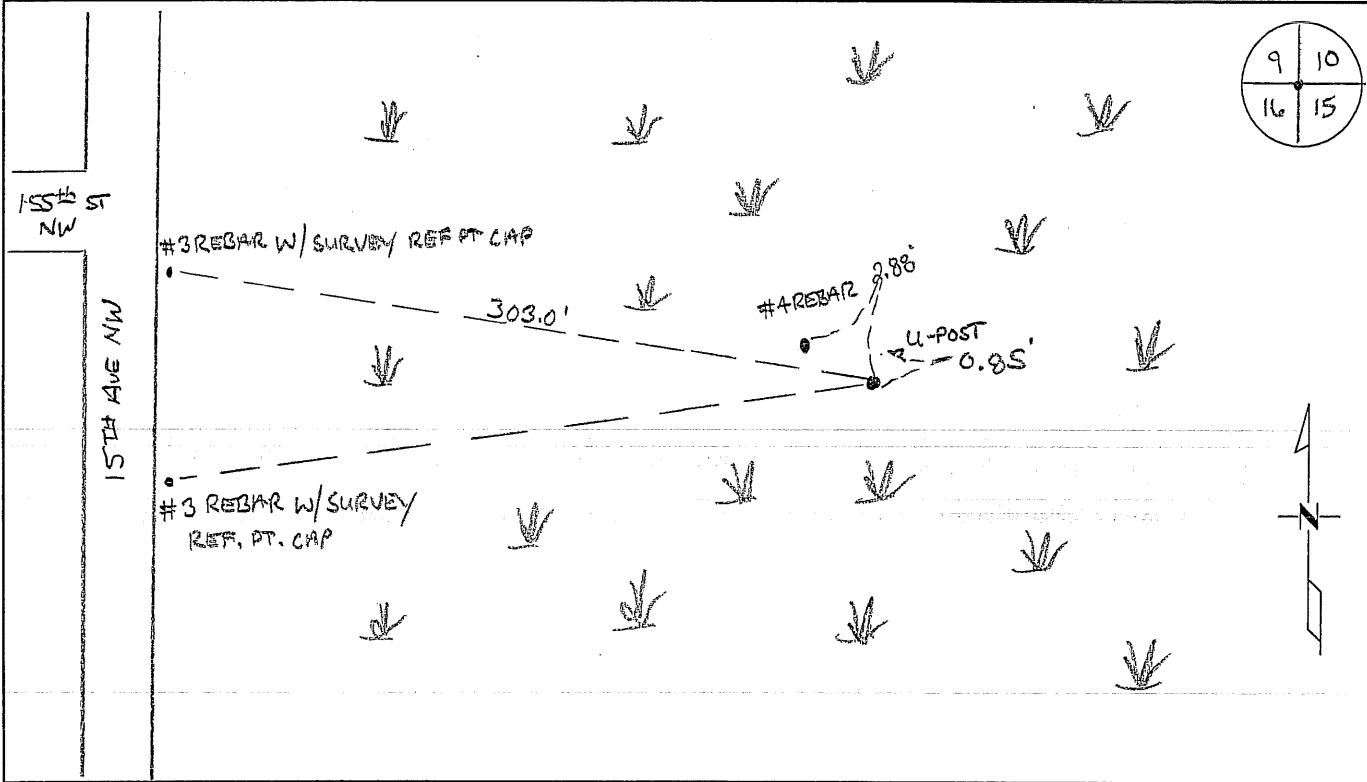
NORTHEAST Corner of Section 16, Township 38, Range 31
4TH Principal Meridian, State of Minnesota, County of Benton

At the corner location shown on the sketch:

On 03/12/2014 found a #3 REBAR CAP/PT. LS 1952 IN SWAMP/LOWLAND

left monument as found lowered monument removed monument (explain)

On 10/7/2013 placed an #3 REBAR 8' feet long in place of found 8" x 12" x 16" granite stone with a cross on top.



Statement of evidence for this corner location is on back of this page.

I hereby certify that this survey, plan, or report was prepared by me or under my direct supervision and that I am a duly Licensed Land Surveyor under the laws of the state of Minnesota.

Signature Jerome C. Wittstock

Date: 11/18/2014

Jerome C. Wittstock, PS, CFedS, Benton County Surveyor
License No. 19552

Benton County Surveyor's Office
 Jerome C. Wittstock, County Surveyor
 Minnesota License No. 19552

Statement of Evidence:**D162**

Northeast Corner of Section 16, Township 38 North, Range 31 West, East Langola Township, 4th Principal Meridian, Benton County, Minnesota.

1852 Original US General Land Office survey established this corner and set a wood post for the corner location with the following bearing trees marked:

10" Tamarack	N 64 E	14 links
10" Tamarack	S 44 1/2 E	124 links

1916 County Surveyor's Record Book 2, page 80, and Record Book A, Map No. 8, shows a survey of Section 10 by J.P. Soderstrum. He found the stone that was set by Felix Parent in survey of Section 9. (Same information is shown on page 82 and Map No. 28 for survey of Section 16.)

1932 County Engineer's Notebook No. 66 contains notation by H. G. Elletson that tie to corner is a 6" diameter stone with bottle under N 38 W 116 links.

1961 MN/DNR survey crew shows I.P. at corner.

2013 The Benton County Surveyor's Office probed and found a 8" x 12" x 16" rectangular granite stone with a cross on top. It was the only stone found in the vicinity. A #4 rebar was also found 2.88 feet northwest of the found stone. The stone measures within 3 feet for the mile west and 1.5 feet for the mile south of Soderstrum's 1916 distances. The stone is accepted as marking the obliterated corner position. A #3 rebar 8 feet long capped 19552 was set at the location of the stone and the stone was left alongside the rebar.

County Coordinates obtained from GPS:

NAD 83 (1996 Adjustment)

N - 185577.829

E - 462598.744

2014 The Benton County Surveyor's Office found the capped rebar and verified the 2013 coordinates.