

Certified, Filed and or Recorded on
November 19, 2014 8:57 AM

BENTON COUNTY MINNESOTA
MARILYN J NOVAK
COUNTY RECORDER

By: CK

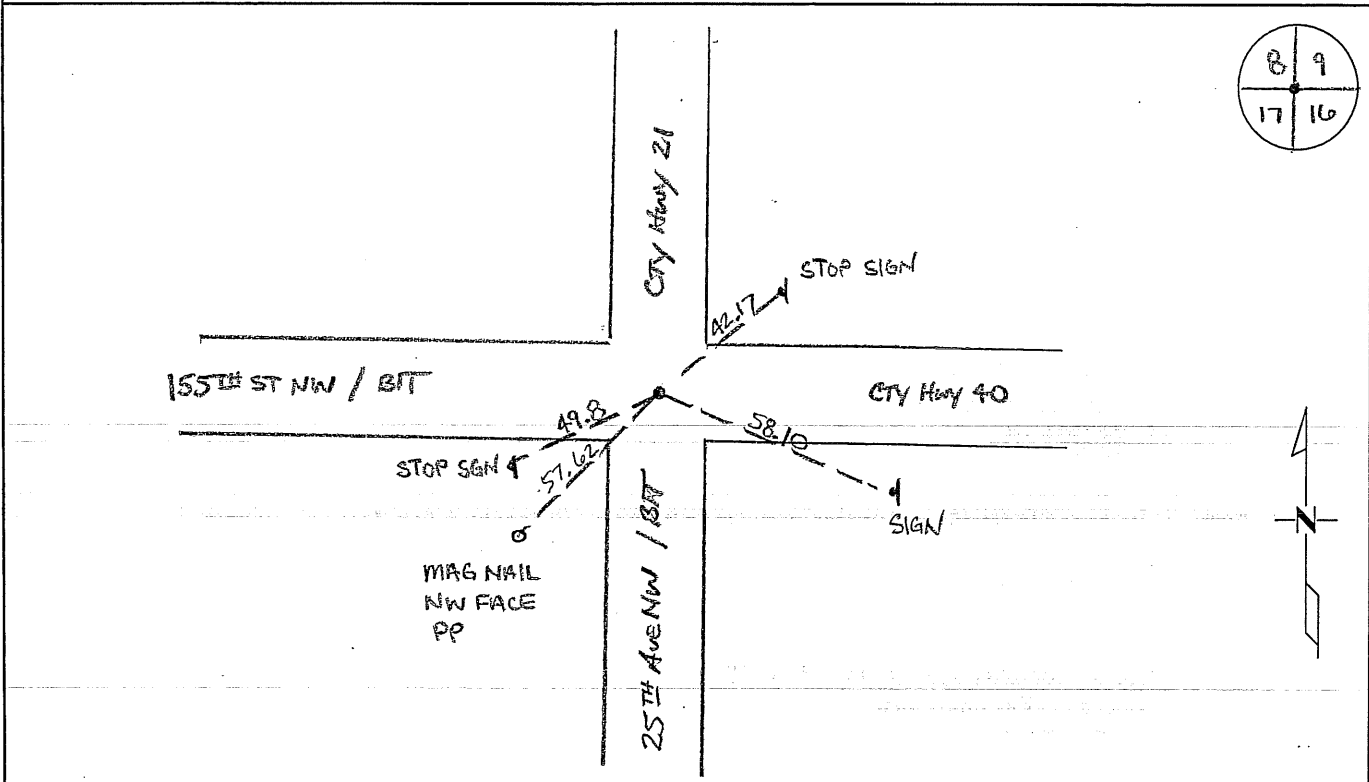
6--V--I

CERTIFICATE OF LOCATION OF GOVERNMENT CORNER

NORTHEAST Corner of Section 17, Township 38, Range 31
4TH Principal Meridian, State of Minnesota, County of Benton

At the corner location shown on the sketch:

- On 03/12/2014 found a 1/2" CAPPED PIPE, UNABLE TO READ CAP, AT CENTERLINE / CENTERLINE
- left monument as found lowered monument removed monument (explain)
- On _____ placed an _____



Statement of evidence for this corner location is on back of this page.

I hereby certify that this survey, plan, or report was prepared by me or under my direct supervision and that I am a duly Licensed Land Surveyor under the laws of the state of Minnesota.

Signature Jerome C. Wittstock
Jerome C. Wittstock, PS, CFedS, Benton County Surveyor
License No. 19552

Date: 11/18/2014

Benton County Surveyor's Office
 Jerome C. Wittstock, County Surveyor
 Minnesota License No. 19552

Statement of Evidence:**D172**

Northeast Corner of Section 17, Township 38 North, Range 31 West, East Langola Township, 4th Principal Meridian, Benton County, Minnesota.

- 1852 Original US General Land Office survey set a wood post in a mound at the corner location.
- 1916 County Surveyor's Record Book 2, page 82, and Record Book A, Map No. 28, shows a survey of Section 16 by J.P. Soderstrum. He found a stone in road intersection with the following reference ties:
- | | | |
|----|----|---------|
| TP | SE | 73 feet |
| TP | NE | 53 feet |
- 1931 County Engineer's Notebook No. 64 contains road survey for CR "A" (21) by H. G. Elletson. Survey notes corner marked by a "stone mt." With ties:
- | | | |
|------|----|-------|
| T.P. | SE | 73.4' |
| T.P. | NW | 52.8' |
- 1948 County Engineer tie:
- | | | |
|----|----|-----------|
| TP | NE | 81.6 feet |
|----|----|-----------|
- 1959 County Surveyor's Record Book 2, page 116, notes a stone at the corner with the following reference ties:
- | | | |
|----|----|-------|
| PP | NE | 66.75 |
| PP | NW | 163.4 |
| PP | SW | 56.65 |
- 1975 Survey in SE ¼ of Section 8 by H.G. Elletson, LS 728, shows iron monument placed at the corner.
- 2001 Westwood Professional Services, Inc. found a RR Spike at the intersection of the centerlines of 155th Street NW running east and west and County Road 21 running north and south.
- 2003 6/25/03 Surveying & Engineering Professionals, Inc. found a RR spike in center of road intersection.
 County Coordinates determined from SEPI traverse:
 NAD 83 (1996 Adjustment)
 N- 185542.210
 E- 457274.332
- 2006 Westwood Professional Services excavated a 9-foot by 12-foot by 3-foot deep hole to original ground. Down 3 feet a pointed granite stone was found measuring 10 inches by 10 inches on the bottom and being 15 inches long. No evidence of the iron monument placed in 1975 was found. A 1/2" x 14" iron pipe capped 19552 was set over the stone.
- County Coordinates determined from GPS
 NAD 83 (1996 Adjustment)
 N- 185543.979
 E- 457274.375
- 2014 The Benton County Surveyor's Office found the iron pipe set in 2006 with a cap which can't be read and verified the 2006 coordinates.