

Certified, Filed and or Recorded on
Oct. 31, 2008 AT 08:27AM

Signed: Ju
MARILYN J NOVAK G V J
BENTON COUNTY MINNESOTA
MARILYN J NOVAK
COUNTY RECORDER

CERTIFICATE OF LOCATION OF GOVERNMENT CORNER

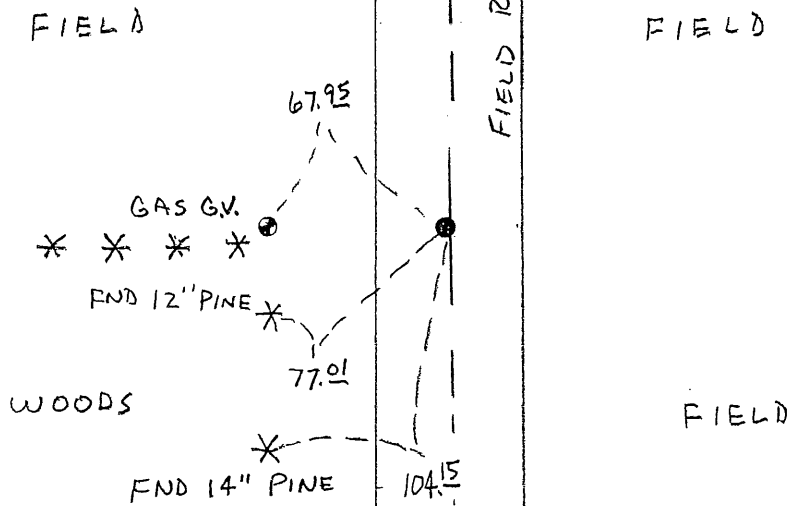
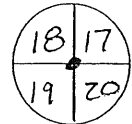
NORTHEAST Corner of Section 19, Township 38, Range 31
4TH Principal Meridian, State of Minnesota, County of Benton

At the corner location shown on the sketch:

On 8-25-08 found a CAST IRON MON

left monument as found lowered monument removed monument (explain)

On _____ placed an _____



Statement of evidence for this corner location is on back of this page.

I hereby certify that this document was researched and prepared by me or under my direct supervision and that I am a licensed Land Surveyor under the laws of the State of Minnesota.

Signature [Signature]
Deputy County Surveyor
License No. 43932

Date: 10/14/08

Benton County Surveyor's Office
Chris Hoglund, Deputy County Surveyor
Minnesota License No. 43932

Statement of Evidence:

D192

Northeast Corner of Section 19, Township 38 North, Range 31 West, East Langola Township, 4th Principal Meridian, Benton County, Minnesota.

- 1852 Original US General Land Office survey set a wood post in a mound at the corner location.
- 1991 David Regan, LS 12236, set a cast iron monument on the edge of a tree line west and the centerline of a road north. He filed a Certificate of Location (#223478).
- 2002 No resurvey information was found on this corner in the Benton County records.
- 2004 MN/DOT
County Coordinates obtained by GPS
NAD 83 (1996 Adjustment)
N-180174.840
E-451828.337
- 2008 Westwood Professional Services, Inc. found a CIM in the center of a north/south road and in line with occupation east and west. The only 1/16 line occupation is on the north line of Section 20. When doubling a line over from the N1/4 of Section 20 to visible occupation at the 1/16 corner to the west, the CIM fits less than a foot. Measured distances compared in all directions to GLO fit from 8-12 feet of proportional distances. Roads and occupation are longstanding evidence of section line location. The CIM is accepted as marking the obliterated position and the 2004 MN/DOT coordinates were verified.

CERTIFICATE OF LOCATION OF GOVERNMENT CORNER

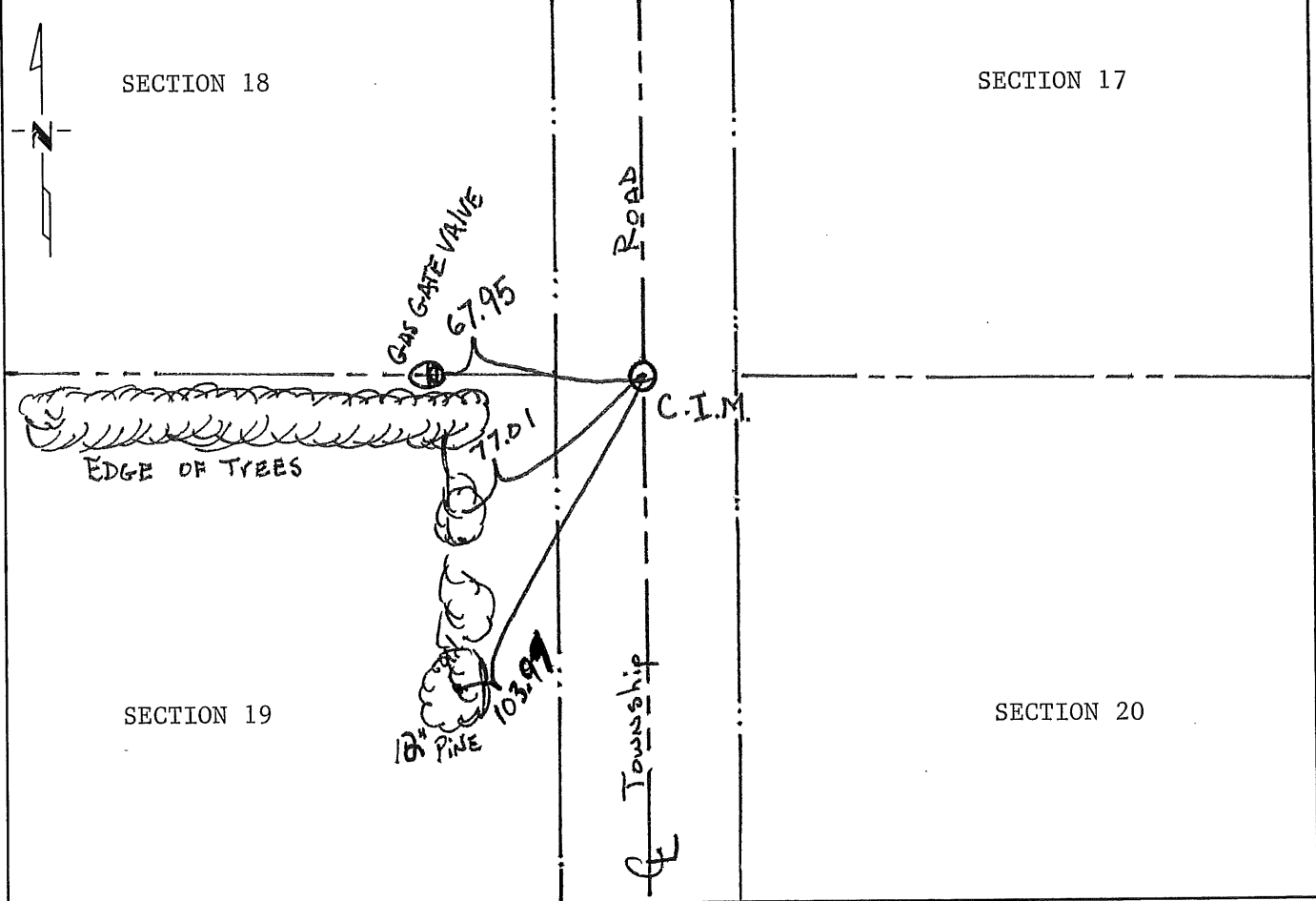
Northeast Corner of Section 19, Township 38, Range 31, 4th P.M.

STATE OF MINNESOTA, County of Benton

At the corner location shown on the sketch:

- On _____ found a _____
DATE
- left monument as found, lowered monument, removed monument (explain)
- On 10-10-91 placed a Cast Iron Monument on edge of trees West and center
DATE
line township road North-South

SKETCH OF REFERENCE TIES



Statement of evidence relative to this corner location is on back of page.

I hereby certify that this document and the data contained herein was prepared by me or under my direct supervision.

David P. Regan 5/12/94
SIGNATURE DATE

Registration No. 12236

- Land Surveyor, Professional Engineer
- County Surveyor, County Engineer

OFFICE OF THE REGISTER OF DEEDS
County of _____

I hereby certify that this document was filed in the Reg. of Deeds office at _____ M. on the _____ day of _____ A.D., 19 _____

Register of Deeds _____

By _____, Deputy

DOCUMENT NO. _____

Statement of Evidence:

The G.L.O. survey was done in 1852 by Edwin James.

The County Surveyors records were researched with no reference to this corner.

On 10/91, Regan Land Surveyors, Inc. searched the area, then placed a cast iron monument on the centerline of a township road North and South, and a tree line West.

2 2 3 4 7 8

OFFICE OF
BENTON COUNTY RECORDER
BENTON COUNTY, MO
CERTIFIED TO BE FILED
AND/OR RECORDED ON

JUN 17 1 02 PM '94

ALICE G. FRIEDMEYER
COUNTY RECORDER

BY *gm* DEPUTY