

Certified, Filed and or Recorded on  
Nov. 05, 2008 AT 08:28AM

Signed: [Signature]  
MARILYN J NOVAK G V I  
BENTON COUNTY MINNESOTA

# CERTIFICATE OF LOCATION OF GOVERNMENT CORNER

EAST QUARTER Corner of Section 19, Township 38, Range 31

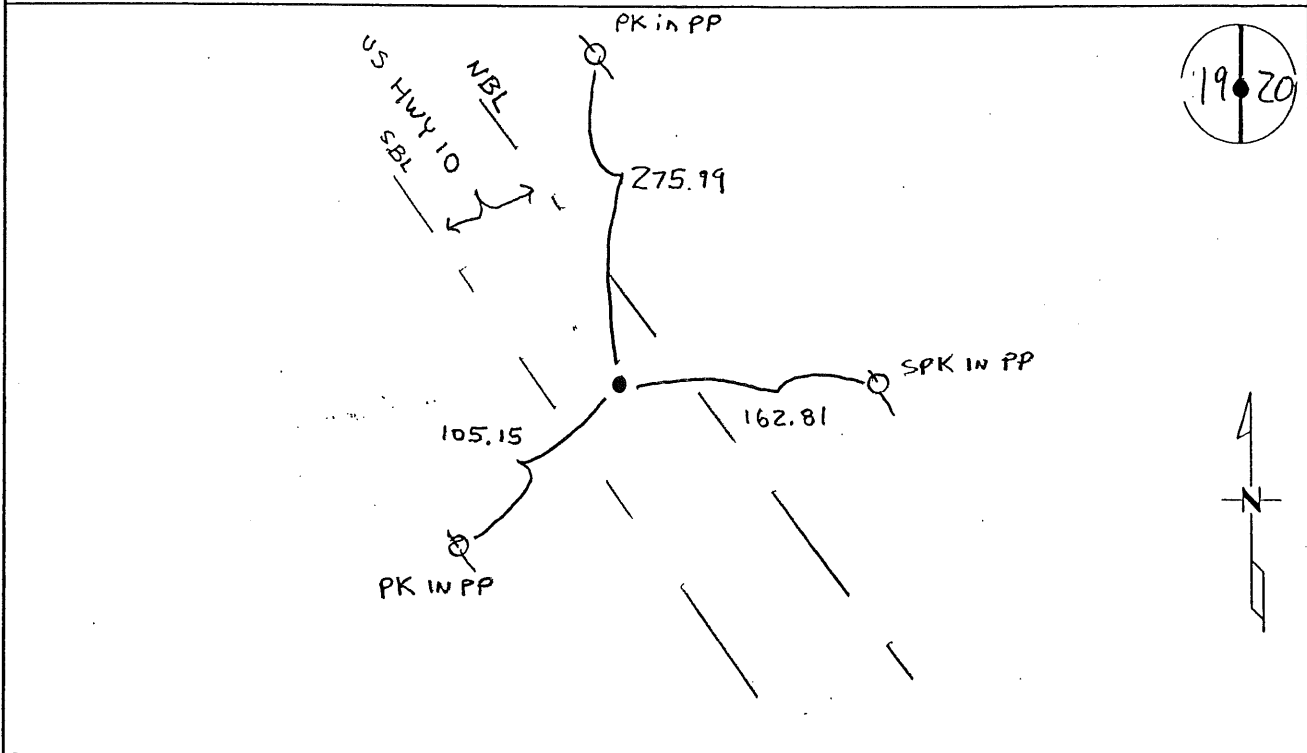
4TH Principal Meridian, State of Minnesota, County of Benton

At the corner location shown on the sketch:

On 8-25-08 found a Broken CIM

left monument as found       lowered monument       removed monument (explain)

On \_\_\_\_\_ placed an \_\_\_\_\_



Statement of evidence for this corner location is on back of this page.

I hereby certify that this document was researched and prepared by me or under my direct supervision and that I am a licensed Land Surveyor under the laws of the State of Minnesota.

Signature [Signature]  
Deputy County Surveyor  
License No. 43932

Date: 11/3/08

**Statement of Evidence:**

**D193**

East Quarter Corner of Section 19, Township 38 North, Range 31 West, East Langola Township, 4<sup>th</sup> Principal Meridian, Benton County, Minnesota.

1852 Original US General Land Office survey set a wood post in a mound at the corner location.

1972 William Lunser, LS 9394, set a 1/2" iron pipe at the intersection of the extension of a fence along the 1/4 line in Sec 20-38-31 and on line between the NE and SE corners of Sec. 19 as occupied. A Certificate of Location (133442) was filed.

1983 William Lunser replaced the 1/2" pipe with a cast iron monument.

2001 Corner is shown by Linda Brown, LS 23682, on the plat of RICE INDUSTRIAL PARK filed for record 2/8/2001.

2004 MN/DOT  
County Coordinates obtained by GPS  
NAD 83 (1996 Adjustment)  
N-177511.978  
E-451963.845

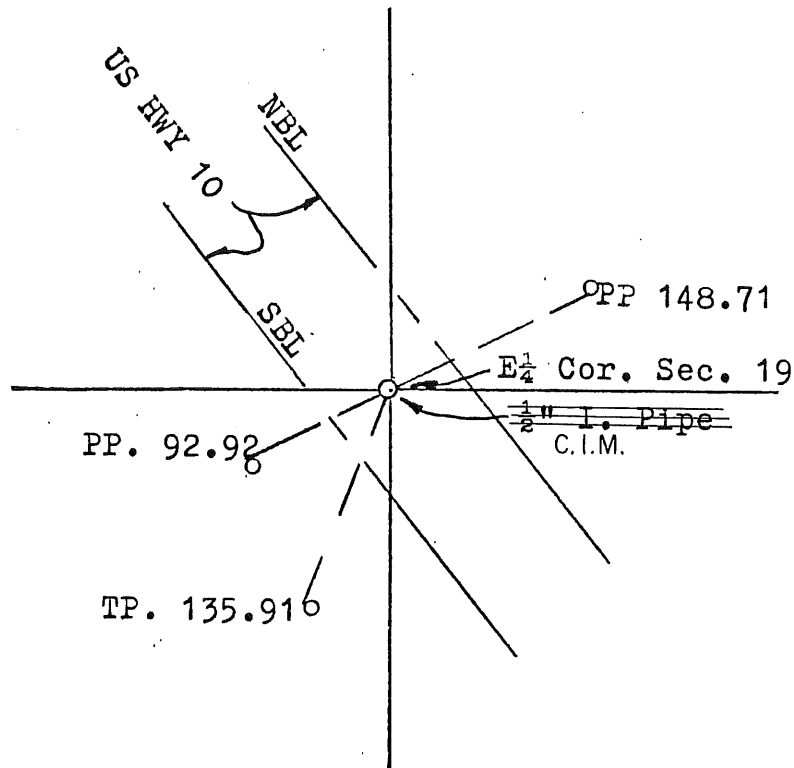
Note: Coordinates give distances of 2666.31 feet to the NE corner and 2656.93 feet to the SE corner, with the corner being 10.54 feet west of a straight line between section corners.

2008 Westwood Professional Services, Inc. found a broken CIM coinciding with 2004 MN/DOT distances to the NE and SE corners of Section 19. CIM falls 10.54 feet west of a straight line between said section corners. No ties remain from Certificate of Location #133442, but appears to be in the same location based on occupation along the east/west 1/4 line of Section 20. CIM is accepted as marking the obliterated position for this corner. Coordinates obtained by GPS coincide with 2004 MN/DOT position.

# CERTIFICATE OF LOCATION OF GOVERNMENT CORNER

I hereby certify that on the 15 day of March, 1971  
 I did restore the east quarter corner of Section 19,  
 Twp. 38, Rg. 31, Benton County, Minnesota, which  
 was evidenced by intersection of extension of fence along  
the quarter line in sec. 20-38-31 and line between NE and SE  
corners of Sec. 19 as occupied.

I further certify that in order to perpetuate said corner I did  
 at the exact location thereof place a permanent marker consisting  
 of a ~~1/2"~~ iron pipe Benton Co. Cast Iron Monument and that  
 I did establish witness or reference monuments as shown below:



173414

I hereby certify that the above is true and correct and that I am a registered Land Surveyor under the laws of the State of Minnesota.

William J. Linn

Minn. Registration No. 9394  
 Revised 5-17-1983

Office of the Register of Deeds,  
Benton County, Minn.

I hereby certify that the within instrument was filed for record in this office on the 16<sup>th</sup> day of May, 1985 at 11:00 am

Alice C. Engelmeier  
 Register of Deeds

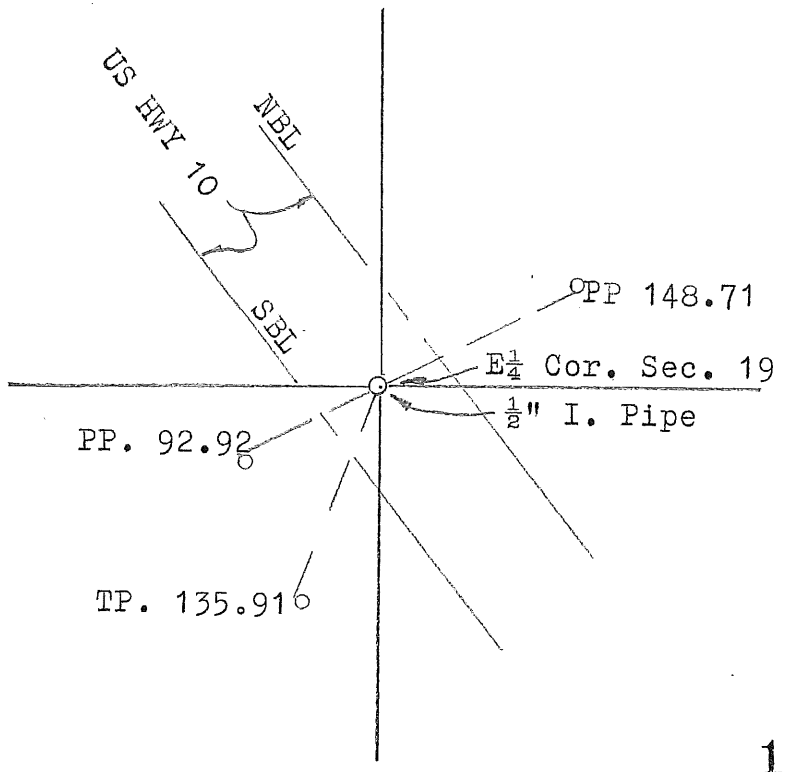
By \_\_\_\_\_ Deputy.

initially certified Mar 71  
 recorded Feb 77  
 looked up SE  
 10-38-91

# CERTIFICATE OF LOCATION OF GOVERNMENT CORNER

I hereby certify that on the 15 day of March, 1971  
 I did restore the east quarter corner of Section 19,  
 Twp. 38, Rg. 31, Benton County, Minnesota, which  
 was evidenced by intersection of extension of fence along  
the quarter line in sec. 20-38-31 and line between NE and SE  
corners of Sec. 19 as occupied.

I further certify that in order to perpetuate said corner I did  
 at the exact location thereof place a permanent marker consisting  
 of a 1/2" iron pipe and that  
 I did establish witness or reference monuments as shown below:



I hereby certify that the  
 above is true and correct  
 and that I am a registered  
 Land Surveyor under the laws  
 of the State of Minnesota.  
William F. Jensen

Minn. Registration No. 9394

Office of the Register of Deeds,  
Benton County, Minn.  
 I hereby certify that the within  
 instrument was filed for record  
 in this office on the 9th day of  
February, 1973.

J. A. Johnson  
 Register of Deeds  
 By Marilyn Novak Deputy.