

Certified, Filed and or Recorded on
Oct. 31, 2008 AT 08:24AM

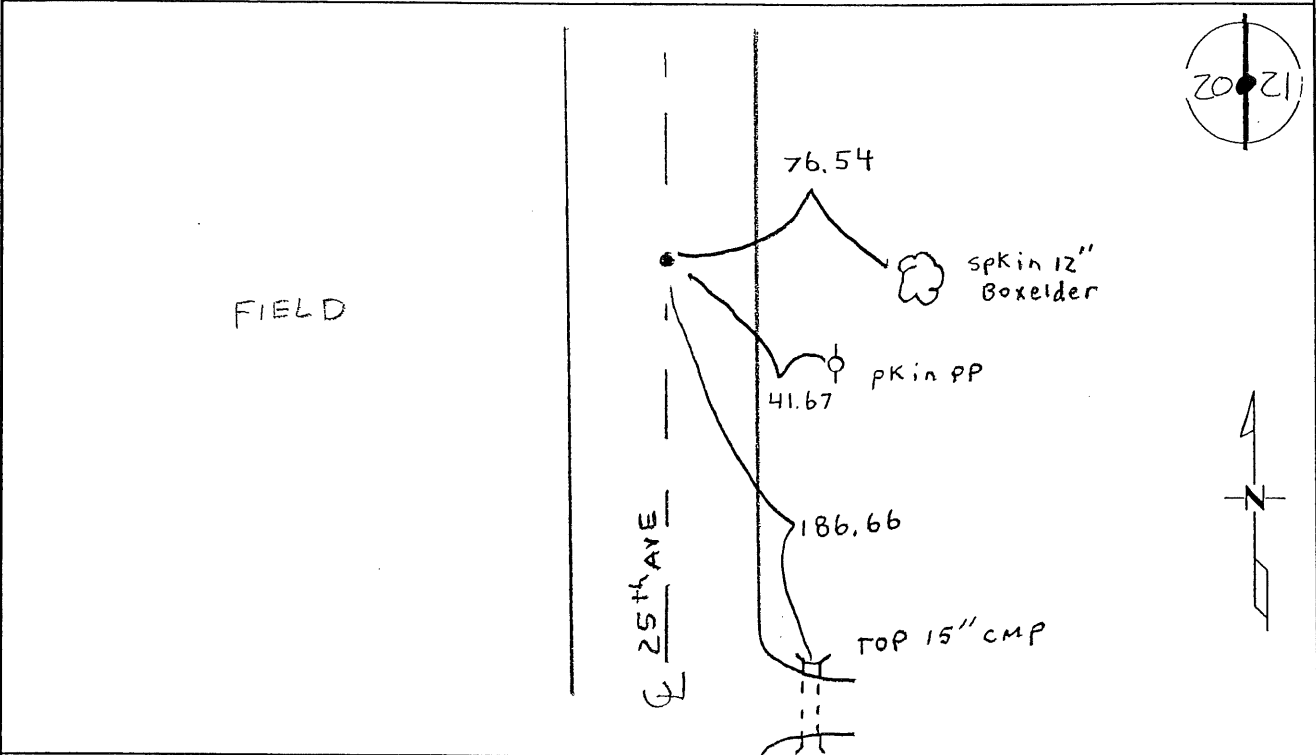
Signed: MJ
MARILYN J NOVAK G V
BENTON COUNTY MINNESOTA
MARILYN J NOVAK
COUNTY RECORDER

CERTIFICATE OF LOCATION OF GOVERNMENT CORNER

EAST QUARTER Corner of Section 20, Township 38, Range 31
4TH Principal Meridian, State of Minnesota, County of Benton

At the corner location shown on the sketch:

- On 8-25-08 found a CAST IRON MON
- left monument as found lowered monument removed monument (explain)
- On _____ placed an _____



Statement of evidence for this corner location is on back of this page.

I hereby certify that this document was researched and prepared by me or under my direct supervision and that I am a licensed Land Surveyor under the laws of the State of Minnesota.

Signature [Signature]
Deputy County Surveyor
License No. 43932

Date: 10/14/08

Benton County Surveyor's Office
Chris Hoglund, Deputy County Surveyor
Minnesota License No. 43932

Statement of Evidence:

D203

East Quarter Corner of Section 20, Township 38 North, Range 31 West, East Langola Township, 4th Principal Meridian, Benton County, Minnesota.

1852 Original US General Land Office survey set a wood post in a mound with pit 8 links east at the corner location.

1971 William Lunser, LS 9394, found a 1/2" pipe in the centerline of a road north/south. He filed a Certificate of Location (#133443) and notes distances of 2664.63 feet to the NE and SE corners Sec 20.

1983 William Lunser replaced the 1/2" pipe with a cast iron monument and filed a Certificate of Location (#173416).

2002 No resurvey information was found on this corner in the Benton County records.

2004 MN/DOT

County Coordinates obtained by GPS

NAD 83 (1996 Adjustment)

N-177564.678

E-457324.052

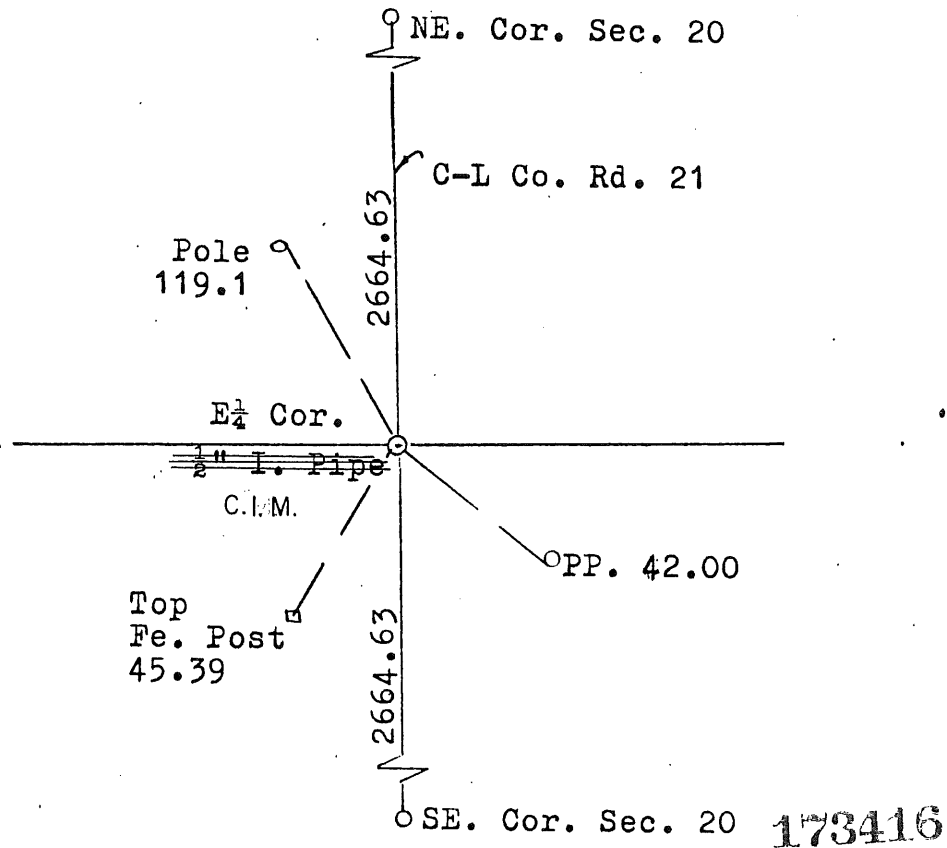
Note: Coordinates give distances of 2664.54 feet to the NE corner and 2664.44 feet to the SE corner, with the corner 15.00 feet west of a straight line between section corners.

2008 Westwood Professional Services, Inc. found a CIM at the corner location. CIM fits 2004 MN/DOT measurements to the NE and SE corners of Section 20. Corner location is accepted as marking the obliterated position. County coordinates obtained by GPS verify 2004 MN/DOT coordinates.

CERTIFICATE OF LOCATION OF GOVERNMENT CORNER

I hereby certify that on the 15 day of March, 1971
 I did find the east quarter corner of Section 20,
 Twp. 38, Rg. 31, Benton County, Minnesota, which
 was evidenced by a 1/2" Iron pipe found in place

I further certify that in order to perpetuate said corner I did
 at the exact location thereof place a permanent marker consisting
 of ~~left as it was~~ Benton County Cast Iron Monument and that
 I did establish witness or reference monuments as shown below:



I hereby certify that the above is true and correct and that I am a registered Land Surveyor under the laws of the State of Minnesota.

William J. Larson

Minn. Registration No. 9394
 Revised 5-17-1983

Office of the Register of Deeds,
Benton County, Minn.

I hereby certify that the within instrument was filed for record in this office on the 16th day of May, 1985.

Alice C. Engelmeier
 Register of Deeds

By _____ Deputy.

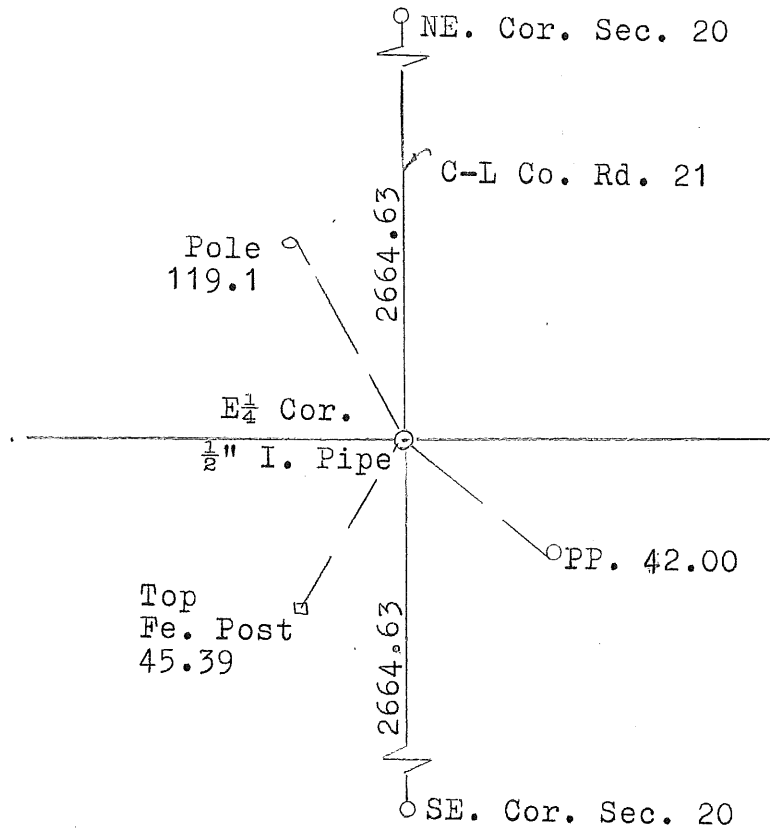
Records Feb 73

 ENE
 NE SE
 20
 SW NW
 NW SW
 2138.31

CERTIFICATE OF LOCATION OF GOVERNMENT CORNER

I hereby certify that on the 15 day of March, 1971
 I did find _____ the east quarter corner of Section 20,
 Twp. 38, Rg. 31, Benton County, Minnesota, which
 was evidenced by _____ a $\frac{1}{2}$ " Iron pipe found in place

I further certify that in order to perpetuate said corner I did
 at the exact location thereof place a permanent marker consisting
 of _____ left as it was _____ and that
 I did establish witness or reference monuments as shown below:



133443

I hereby certify that the
 above is true and correct
 and that I am a registered
 Land Surveyor under the laws
 of the State of Minnesota.

William J. Jensen

Minn. Registration No. 9394

Office of the Register of Deeds,
Benton County, Minn.

I hereby certify that the within
 instrument was filed for record
 in this office on the 9th day of
February, 1973.

J. A. Johnson
 Register of Deeds

By Marilyn Novak Deputy.