

CERTIFICATE OF LOCATION OF GOVERNMENT CORNER

East Quarter _____ Corner of Section 21, Township 38, Range 31, 4th P.M.

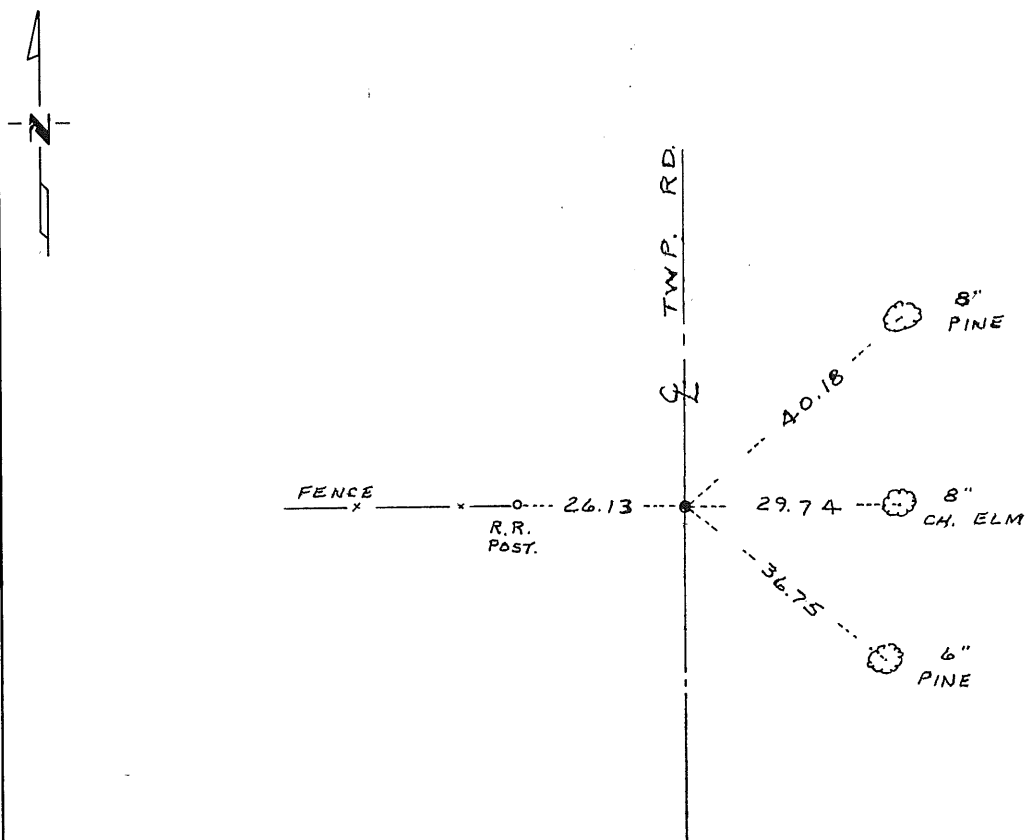
STATE OF MINNESOTA, County of Benton

At the corner location shown on the sketch:

- On 4/17/85 found a 3/8 inch steel rod in centerline Twp Road
DATE
north-south and fence line west
 - left monument as found, lowered monument, removed monument (explain)
- On 4/17/85 placed a Benton County cast iron monument
DATE

SENEZ
NE 25 21
MAY 22
38 31

SKETCH OF REFERENCE TIES



176056

Statement of evidence relative to this corner location is on back of page.

I hereby certify that this document and the data contained herein was prepared by me or under my direct supervision.

David P. Regan 12/13/85
SIGNATURE DATE

Registration No. 12236

- Land Surveyor, Professional Engineer
- County Surveyor, County Engineer

County Recorder
OFFICE OF THE REGISTER OF DEEDS
County of Benton

I hereby certify that this document was filed in the Reg. of Deeds office at 1 P.M. on the 16 day of January A.D., 19 86
County Recorder
Register of Deeds Alice C. Engelmeier

By [Signature], Deputy

DOCUMENT NO. _____