

CERTIFICATE OF LOCATION OF GOVERNMENT CORNER

East Quarter _____ Corner of Section 24, Township 38N, Range 31W, 4th P.M.

STATE OF MINNESOTA, County of Benton

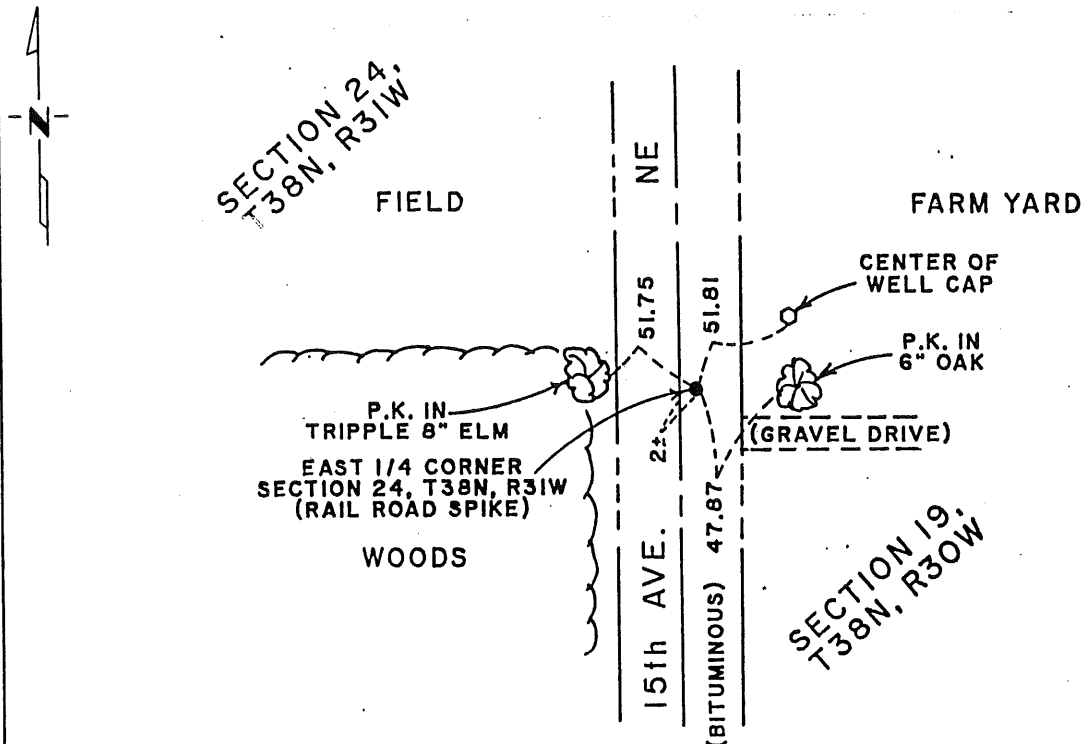
At the corner location shown on the sketch:

On 11-30-89 found a Railroad spike
DATE

left monument as found, lowered monument, removed monument (explain)

On _____ placed a _____
DATE

SKETCH OF REFERENCE TIES



Statement of evidence relative to this corner location is on back of page.

I hereby certify that this document and the data contained herein was prepared by me or under my direct supervision.

Bruce W. Shipton 1-5-90
SIGNATURE DATE

Registration No. 17768

Land Surveyor, Professional Engineer

County Surveyor, County Engineer

OFFICE OF THE COUNTY RECORDER

County of Benton

I hereby certify that this document was filed in the Co. Recorders office at _____ .M. on the _____ day of _____ A.D., 19 _____

County Recorder _____

By _____, Deputy

DOCUMENT NO. _____

Statement of Evidence:

1. The GLO was accomplished by Therodore Conkey in December, 1849.
2. In 1974, Milner W. Carley & Associates located said corner and marked it with a railroad spike. Said corner was 2.5± E of the center line stripe.
3. On 11-30-89, Paul E. Wellen & Associates located the railroad spike as indicated by Milner W. Carley & Associates. We made new reference ties as indicated.

195977

OFFICE OF
BENTON COUNTY RECORDER
BENTON COUNTY, MN
CERTIFIED TO BE FILED
AND/OR RECORDED ON

JAN 11 8 43 AM '90

ALICE G. ENGELMEYER
COUNTY RECORDER

BY: Jaw DEPUTY