

CERTIFICATE OF LOCATION OF GOVERNMENT CORNER

East _____ Corner of Section 26, Township 38, Range 31, 4th P.M.
STATE OF MINNESOTA, County of Benton

At the corner location shown on the sketch:

On _____ found a _____
DATE

left monument as found, lowered monument, removed monument (explain)

On 4/4/77 placed a 1/2 " iron pipe
DATE

SKETCH OF REFERENCE TIES

Refer to next page

Statement of evidence relative to this corner location is on back of page.

#147256

I hereby certify that this document and the data contained herein was prepared by me or under my direct supervision.

Paul E. Wellen 12-19-77
SIGNATURE DATE

Registration No. 10461

- Land Surveyor, Professional Engineer
 County Surveyor, County Engineer

OFFICE OF THE REGISTER OF DEEDS
County of Benton

County Recorder

I hereby certify that this document was filed in the Reg. of Deeds office at 4 P.M. on the 10th day of January A.D., 19 78

F. A. Johnson
County Recorder
Register of Deeds

By A. E. County Recorder, Deputy

DOCUMENT NO. _____

CERTIFICATE OF LOCATION OF GOVERNMENT CORNER

EAST Corner of Section 26, Township 38, Range 31, 4th P.M.

STATE OF MINNESOTA, County of BENTON

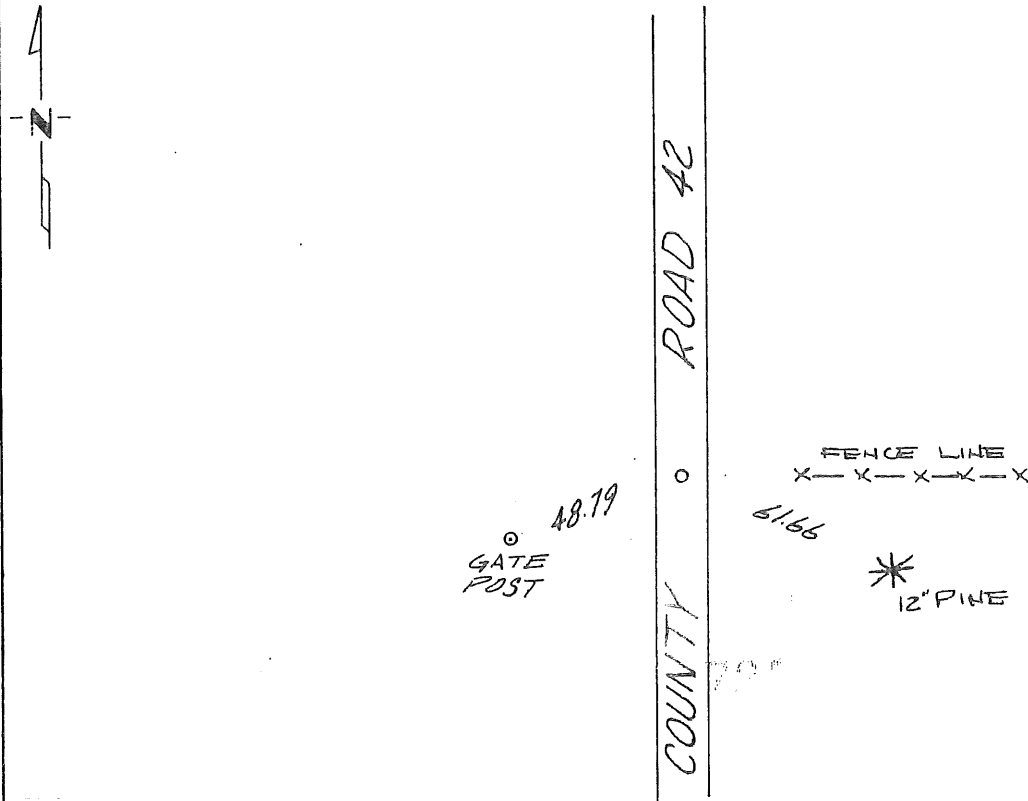
At the corner location shown on the sketch:

On _____ found a _____
DATE

left monument as found, lowered monument, removed monument (explain)

On 4/4/77 placed a 1/2" iron pipe
DATE

SKETCH OF REFERENCE TIES



Statement of evidence relative to this corner location is on back of page. **147256**

I hereby certify that this document and the data contained herein was prepared by me or under my direct supervision.

Paul J. Keller 12/19/77
SIGNATURE DATE

Registration No. 10461
 Land Surveyor, Professional Engineer
 County Surveyor, County Engineer

OFFICE OF THE REGISTER OF DEEDS
County of Benton

I hereby certify that this document was filed in the Reg. of Deeds office at 4 P. .M. on the 10th day of January A.D., 1978

Register of Deeds J. A. Johnson
By A. G. County Recorder, Deputy

DOCUMENT NO. _____

Placed a $\frac{1}{2}$ " iron pipe at proportionate government distance between the northeast corner and the southeast corner of Section 26, T38N, R31W. Witnessed by the centerline of a county road running north and south and a fence line east.