

CERTIFICATE OF LOCATION OF GOVERNMENT CORNER

East Quarter _____ Corner of Section 35, Township 38, Range 31, 4th P.M.

STATE OF MINNESOTA, County of Benton

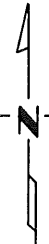
At the corner location shown on the sketch:

On 3-6-78 found a 1½" Iron pipe in place
DATE

left monument as found, lowered monument, removed monument (explain)

On _____ placed a left as it was
DATE

SKETCH OF REFERENCE TIES

 Refer to next page

Statement of evidence relative to this corner location is on back of page.

I hereby certify that this document and the data contained herein was prepared by me or under my direct supervision.

Ronald Engelmeyer

SIGNATURE 13334 DATE

Registration No. _____
 Land Surveyor, Professional Engineer
 County Surveyor, County Engineer

County Recorder

OFFICE OF THE REGISTER OF DEEDS
County of Benton

I hereby certify that this document was filed in the Reg. of Deeds office at 9 A.M. on the 21st day of February A.D., 19 79

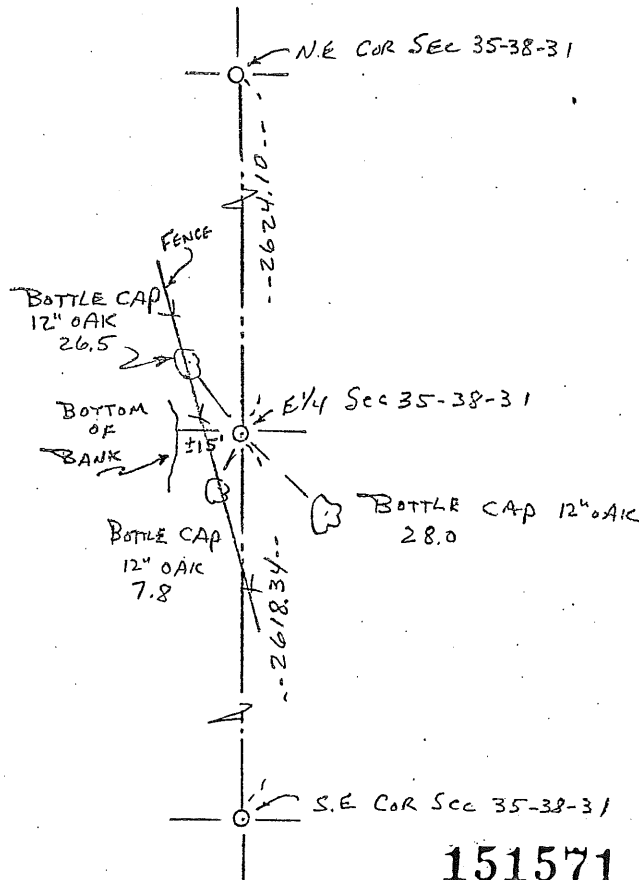
Register of Deeds F. A. Johnson
By _____, Deputy

DOCUMENT NO. 151571

CERTIFICATE OF LOCATION OF GOVERNMENT CORNER

I hereby certify that on the 6th day of MARCH, 1978
 I did Find the EAST QUARTER corner of Section 35,
 Twp. 38, Rg. 31, BENTON County, Minnesota, which
 was evidenced by 1/2" IRON PIPE FOUND IN PLACE

I further certify that in order to perpetuate said corner I did
 at the exact location thereof place a permanent marker consisting
 of LEFT AS IT WAS and that
 I did establish witness or reference monuments as shown below:



151571

I hereby certify that the above is true and correct and that I am a registered Land Surveyor under the laws of the State of Minnesota.

Ronald Engle

Minn. Registration No. 13334

County Recorder
 Office of the ~~Register of Deeds~~,
Benton County, Minn.

I hereby certify that the within instrument was filed for record in this office on the 21st day of February, 1977. 94-21.

F.A. Johnson
 Register of Deeds *County Recorder*

By _____ Deputy.