

Certified, Filed and or Recorded on
Sep. 23, 2008 AT 01:37PM

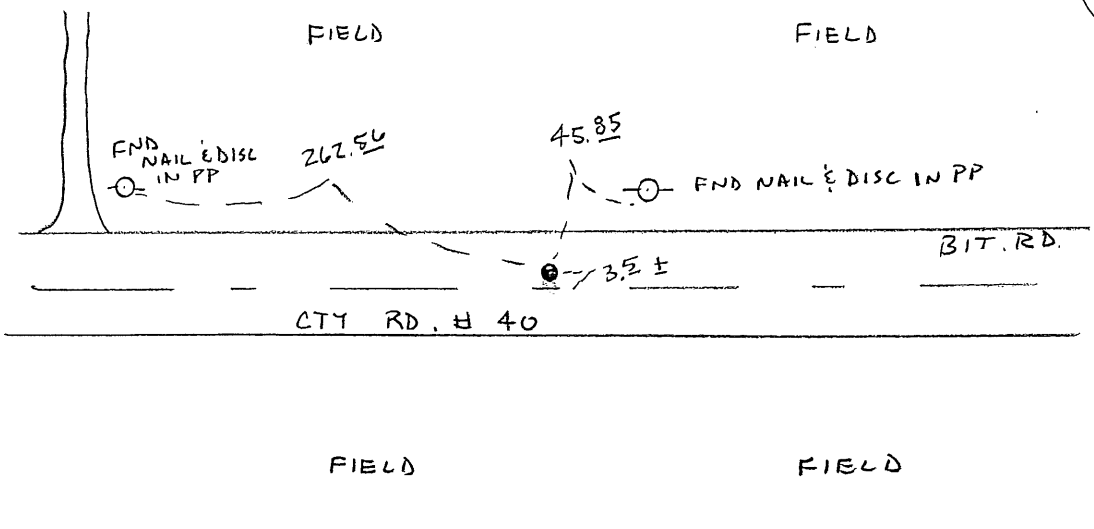
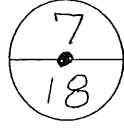
Signed: BW
MARILYN J NOVAK B V I
BENTON COUNTY MINNESOTA
MARILYN J NOVAK
COUNTY RECORDER

CERTIFICATE OF LOCATION OF GOVERNMENT CORNER

N¹/₄ Corner of Section 18, Township 38, Range 31
4TH Principal Meridian, State of Minnesota, County of Benton

At the corner location shown on the sketch:

- On 8-12-08 found a CAST IRON MON
- left monument as found lowered monument removed monument (explain)
- On _____ placed an _____



Statement of evidence for this corner location is on back of this page.

I hereby certify that this document was researched and prepared by me or under my direct supervision and that I am a licensed Land Surveyor under the laws of the State of Minnesota.

Signature [Handwritten Signature]
Deputy County Surveyor
License No. 43932

Date: 8/29/08

Benton County Surveyor's Office
 Chris Hoglund, Deputy County Surveyor
 Minnesota License No. 43932

Statement of Evidence:

D181

North Quarter of Section 18, Township 38 North, Range 31 West, East Langola Township, 4th Principal Meridian, Benton County, Minnesota.

- 1852 Original US General Land Office survey set a wood post at this location and bearing trees were recorded.
- | | | |
|-------------|------------|-----------|
| 8" Bur Oak | N 10 1/2 E | 40 links |
| 10" Bur Oak | N 28 W | 234 links |
- 1941 County Surveyor's Record Book 2, page 98, contains a survey by HG Elleston of Section 7, 38-31. Survey shows this corner, but does not give any information about a monument.
- 1988 Bruce Skipton, LS 17768, set a cast iron monument 5 feet north of the centerline of an east/west road at lost position. He first dug with a backhoe and found nothing. He filed a Certificate of Location (#191341).
- 2003 6/25/03 Surveying & Engineering Professionals, Inc. found a CIM, which fit the lost position being 2680.78 feet west of the NE corner of Section 18.
 County Coordinates determined from SEPI traverse:
 NAD 83 (1996 Adjustment)
 N - 185535.223
 E - 449213.249
- 2004 MN/DOT
 County Coordinates obtained by GPS
 NAD 83 (1996 Adjustment)
 N-185535.023
 E-449213.299
- 2008 Westwood Professional Services, Inc. found the CIM at Skipton's position and verified 2004 MN/DOT coordinates.

CERTIFICATE OF LOCATION OF GOVERNMENT CORNER

NORTH 1/4 Corner of Section 18, Township 38 N, Range 31 W, 4th P.M.

STATE OF MINNESOTA, County of BENTON

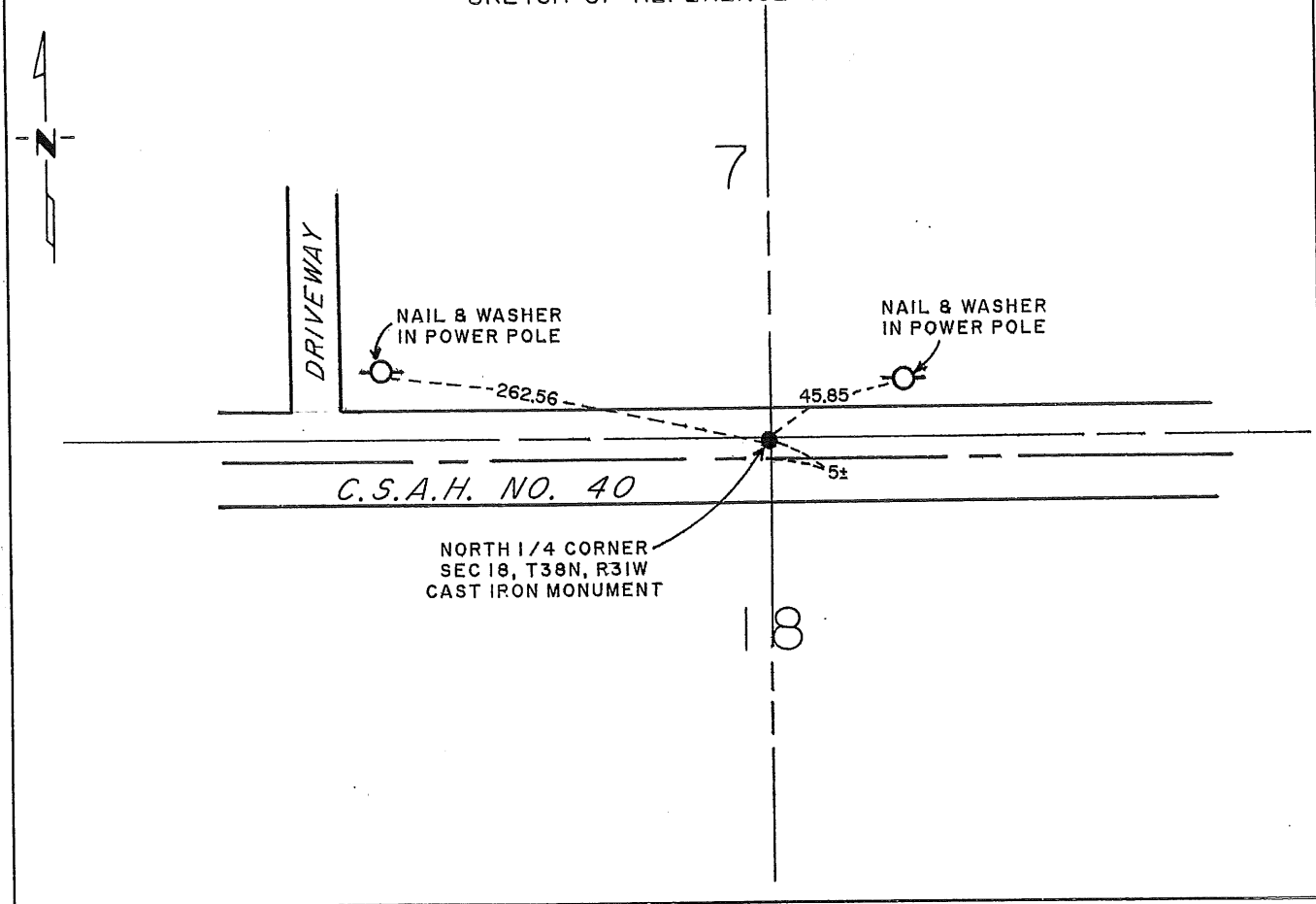
At the corner location shown on the sketch:

On _____ found a _____
DATE

left monument as found, lowered monument, removed monument (explain)

On 18 AUG 1988 placed a CAST IRON MONUMENT
DATE

SKETCH OF REFERENCE TIES



Statement of evidence relative to this corner location is on back of page.

I hereby certify that this document and the data contained herein was prepared by me or under my direct supervision.

Ernest W. Skintun SIGNATURE 12-28-88 DATE

Registration No. 17768

Land Surveyor, Professional Engineer

County Surveyor, County Engineer

OFFICE OF THE COUNTY RECORDER

County of _____

I hereby certify that this document was filed in the Co. Recorders office at _____ M. on the _____ day of _____ A.D., 19 _____

County Recorder _____

By _____, Deputy

DOCUMENT NO. _____

Statement of Evidence:

NORTH QUARTER CORNER, SECTION 18, T38N, R31W, 4TH P.M

1. During the G.L.O. Survey of 1852, Mr. Edwin James Jr., a U.S. Deputy surveyor, set a wood post to mark this corner.
2. Benton County's old surveyor's books provided no information to relocate said corner.
3. On August 18, 1988, Paul E. Wellen and Associates Inc., searched for said corner, at a distance of single proportionate from the northeast corner to the northwest corner of said section, we dug with a backhoe and found no evidence to relocate said corner. We set a cast iron monument, by the lost method procedure, on a single proportionate measurement from the northeast corner to the northwest corner of said section.

191341

OFFICE OF
BENTON COUNTY RECORDER
BENTON COUNTY, MO
CERTIFIED TO BE FILED
AND/OR RECORDED ON

JAN 20 9 17 AM '89

ALICE O. SMOLLESEY
COUNTY RECORDER

BY  DEPUTY