

Certified, Filed and or Recorded on
Oct. 31, 2008 AT 08:26AM

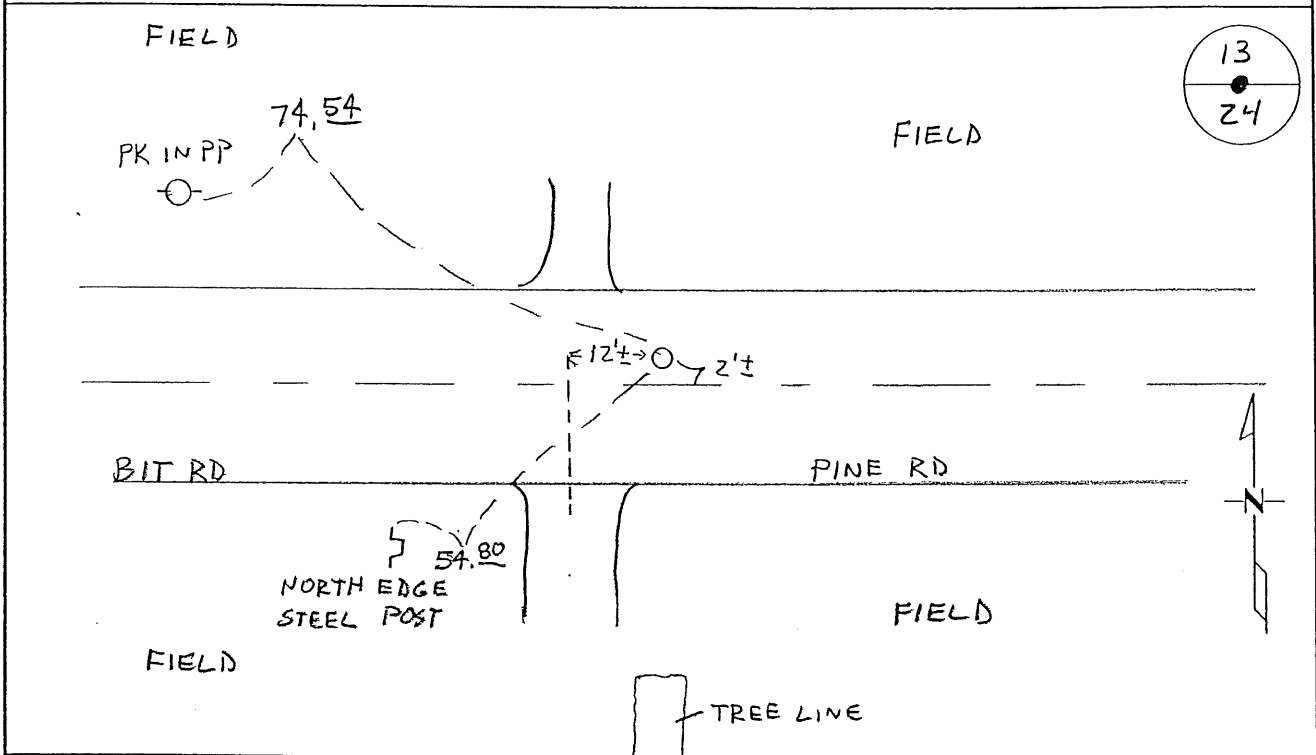
Signed: M
MARILYN J NOVAK G V
BENTON COUNTY MINNESOTA

CERTIFICATE OF LOCATION OF GOVERNMENT CORNER

NORTH QUARTER Corner of Section 24, Township 38, Range 31
4TH Principal Meridian, State of Minnesota, County of Benton

At the corner location shown on the sketch:

- On _____ found a _____
- left monument as found lowered monument removed monument (explain)
- On 8-27-08 placed an 1/2" I.P. # 43932



Statement of evidence for this corner location is on back of this page.

I hereby certify that this document was researched and prepared by me or under my direct supervision and that I am a licensed Land Surveyor under the laws of the State of Minnesota.

Signature *Marilyn J Novak*
Deputy County Surveyor
License No. 43932

Date: 10/14/08

Benton County Surveyor's Office
Chris Hogle, Deputy County Surveyor
Minnesota License No. 43932

Statement of Evidence:

D241

North Quarter Corner of Section 24, Township 38 North, Range 31 West, East Langola Township, 4th Principal Meridian, Benton County, Minnesota.

1852 Original US General Land Office survey set a wood post in a mound at the corner location with a pit 8 links east.

1938 County Highway survey by H. G. Elletson for CSAH 12 shows no corner found. Road was run on a straight line between section corners. Stationing shows approximate corner in center of east-west road and in line with fence lines north and south 2711.00 feet from the NE corner and 2572.8 feet from the NW corner of Section 24. Field entrances are shown on the east side of the fence lines. Ties:

T.P.	NE	27.7'
F.P.	SE	35.0'

2002 No resurvey information was found on this corner in the Benton County Surveyor's records.

2008 Westwood Professional Services, Inc. did an extensive search with a metal locator and found nothing. An obliterated position was computed using H.G. Elletson's 1938 distances which put the location 2568.88 feet from the NW corner of Section 24 and 2706.87 feet from the NE corner of Section 24. The position falls ~2 feet north of traveled centerline of CSAH 12 and fits field line occupation to the south. A ½"x18" iron pipe capped #43932 was set at the obliterated position. County Coordinates obtained by GPS.

NAD 83 (1996 Adjustment)
N-180310.679
E-476131.474