

# CERTIFICATE OF LOCATION OF GOVERNMENT CORNER

Northeast \_\_\_\_\_ Corner of Section 1, Township 38, Range 31, 4th P.M.

STATE OF MINNESOTA, County of Benton

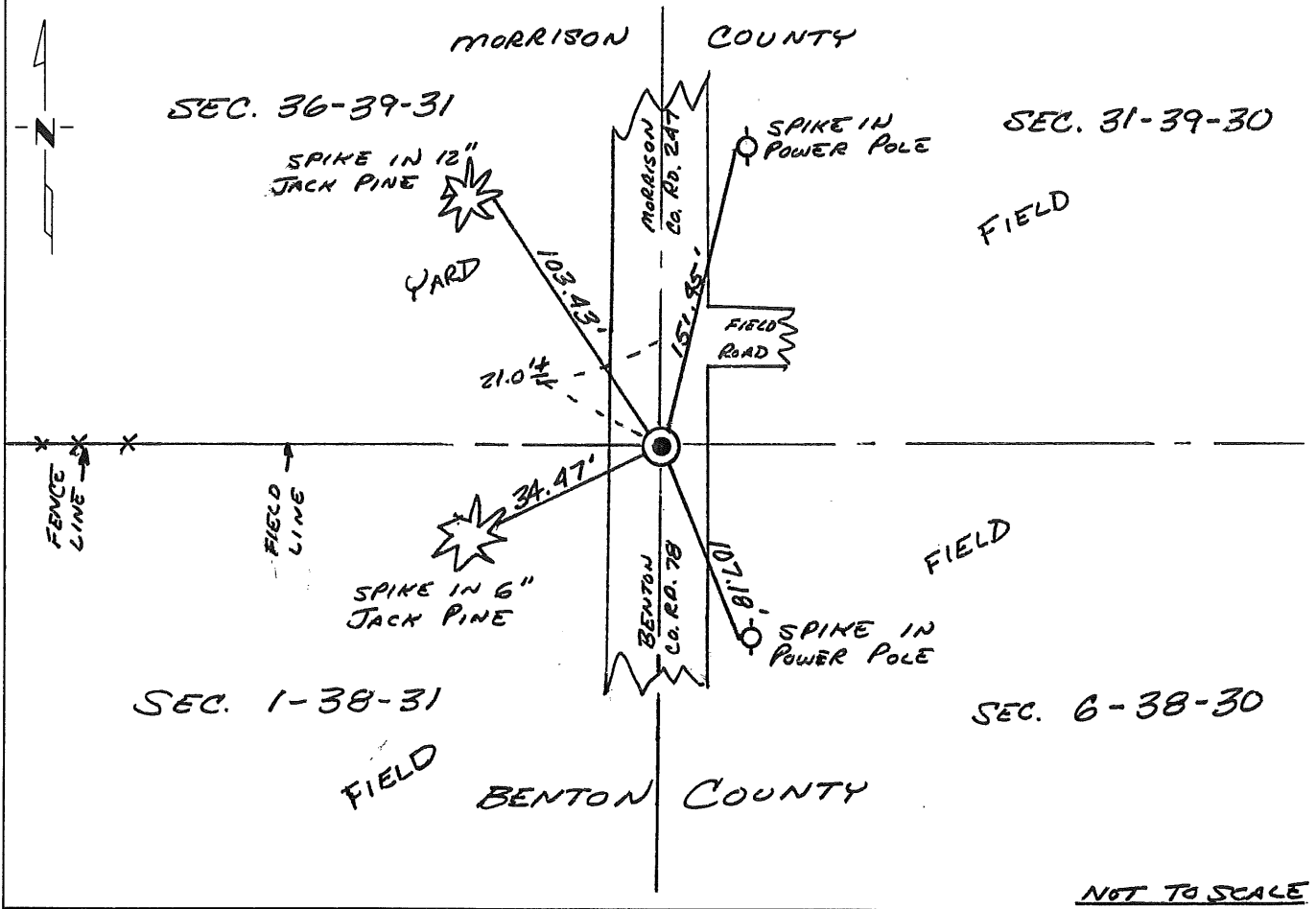
At the corner location shown on the sketch:

On 6-23-94 found a nothing  
DATE

left monument as found,  lowered monument,  removed monument (explain)

On 9-23-94 placed a Benton County Cast Iron Monument  
DATE

### SKETCH OF REFERENCE TIES



NOT TO SCALE

Statement of evidence relative to this corner location is on back of page.

I hereby certify that this document and the data contained herein was prepared by me or under my direct supervision.

Kenn F... SIGNATURE Nov 14, 1994 DATE

Registration No. 22702

Land Surveyor,  Professional Engineer

County Surveyor,  County Engineer

OFFICE OF THE COUNTY RECORDER

County of \_\_\_\_\_

I hereby certify that this document was filed in the Co. Recorders office at \_\_\_\_\_ .M. on the \_\_\_\_\_ day of \_\_\_\_\_ A.D., 19 \_\_\_\_

County Recorder \_\_\_\_\_

By \_\_\_\_\_, Deputy

DOCUMENT NO. \_\_\_\_\_

Statement of Evidence:

The northeast corner of Section 1, Township 38, Range 31, 4th Principal Meridian, Benton County, Minnesota, was set under the Public Land Survey as a post with bearing trees, in 1849. No trace of post or trees now exists.

A search by Benton Co. Highway personnel of available county survey records revealed no additional information on this corner.

On June 23, 1994, Comstock & Davis, Inc. while remonumenting section corners for the purpose of G.P.S. work for Benton County, searched at the position of the northeast corner of Sec. 1, Twp. 38, Ran. 31, at a field and fence line west and centerline of Benton County Road 78 and found nothing. Comstock & Davis, Inc. compared the location of the field and fence line and centerline to the original US Government Survey and found the position to be within reason of the Public Land Survey records. Comstock & Davis, Inc. accepted the field/fence line/centerline position as the position for the northeast corner of Section 1 and on Sept. 23, 1994, Comstock & Davis, Inc. placed a Benton County cast iron monument and made reference ties. Refer to Comstock & Davis, Inc. Job No. 945017.

226894

BENTON COUNTY RECORDER  
BENTON COUNTY, MN  
CERTIFIED TO BE FILED  
AND/OR RECORDED ON

JAN 19 3 04 PM '95

ALICE G. REYER  
COUNTY RECORDER

BY DR DEPUTY