

# CERTIFICATE OF LOCATION OF GOVERNMENT CORNER

NORTHEAST  
Southeast

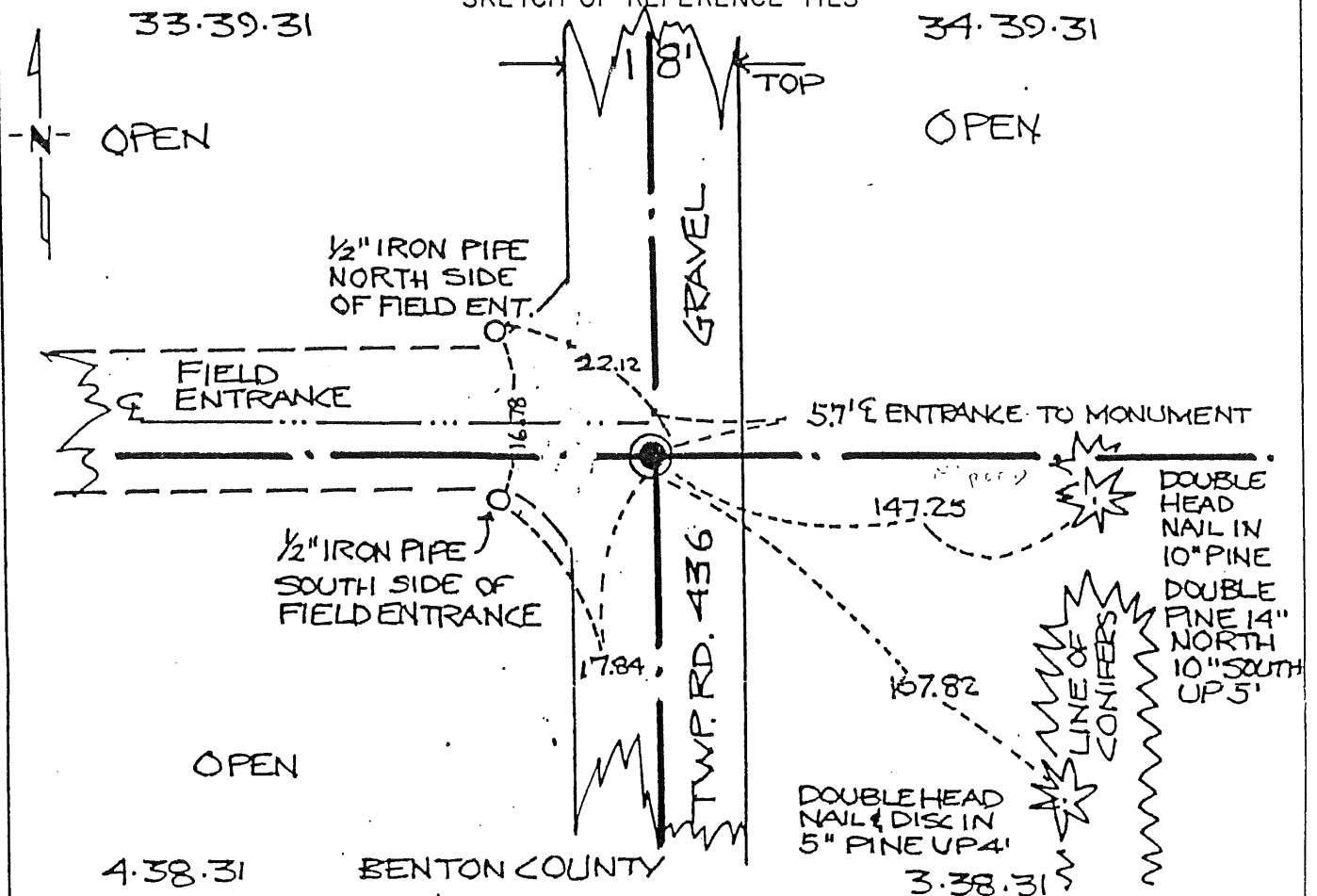
Corner of Section 4 33, Township' 38 39, Range 31 31, 4th P.M.

STATE OF MINNESOTA, County of Morrison

At the corner location shown on the sketch:

- On 6-9-86 found nothing in an 8' x 10' x 3' deep excavation.  
DATE
- left monument as found,  lowered monument,  removed monument (explain)
- On 10-25-86 placed a cast iron monument  
DATE

SKETCH OF REFERENCE TIES



Statement of evidence relative to this corner location is on back of page.

I hereby certify that this document and the data contained herein was prepared by me or under my direct supervision.

Thomas R. Johnson Dec 3 1986  
SIGNATURE DATE

Registration No. 16097

Land Surveyor,  Professional Engineer

County Surveyor,  County Engineer

OFFICE OF THE COUNTY RECORDER

County of Morrison

I hereby certify that this document was filed in the Co. Recorders office at 11 A .M. on the 18 day of Dec. A.D., 19 86

County Recorder James R. Anderson

By Leslie M. Johannes, Deputy

DOCUMENT NO. 308432 MICROFILMED