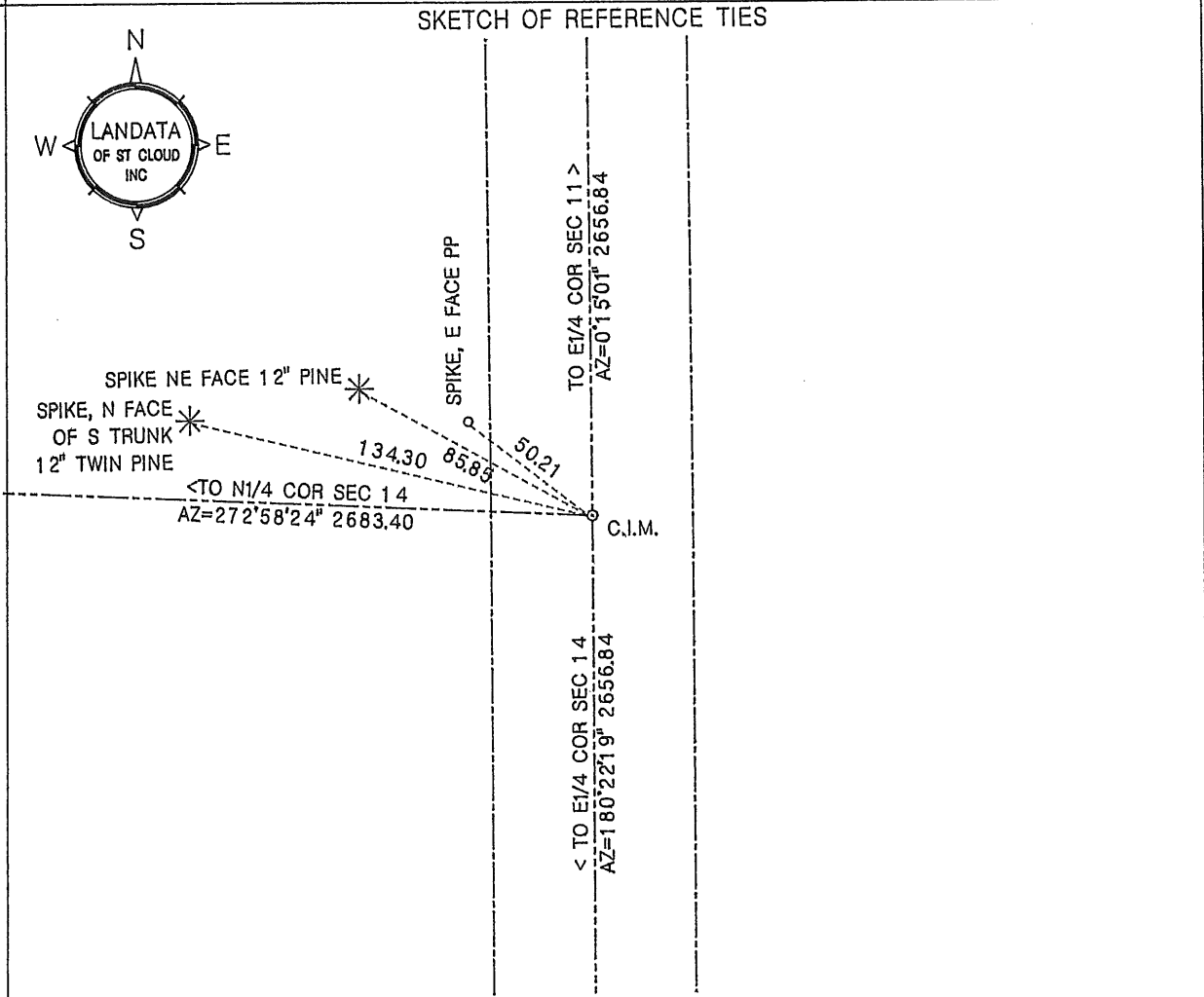


# CERTIFICATE OF LOCATION OF GOVERNMENT CORNER

NORTHEAST corner of Section 14, Township 38, Range 31, 4th P.M.  
Benton County, Minnesota.

On Mar 24, 1999, A Benton Co, Cast Iron Monument (C.I.M.) was placed at this location.



Statement of evidence relative to this corner location on back of page

I hereby certify that this document and the data contained herein was prepared by me or under my direct supervision.

*William F. Lunser* 11/1/99  
 William F. Lunser, L.S.      Date  
 Mn Reg No 9394

OFFICE OF THE COUNTY RECORDER  
 Benton County, Minnesota

I hereby certify that this document was filed in this office at \_\_\_:\_\_\_ M. on the \_\_\_ day of \_\_\_\_\_, 19\_\_.

County Recorder \_\_\_\_\_

By \_\_\_\_\_, Deputy

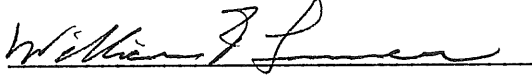
DOCUMENT NO. \_\_\_\_\_

STATEMENT OF EVIDENCE:

No records were found to indicate use or remonumentation of this corner after its original placement by the U.S. Government Survey.

A search of the area failed to uncover the marker. Occupation lines consist only of the centerline of road north and south.

Using the road centerline as an accessory to the corner's east-west location, a monument was set at a point proportionate to G.L.O. measurements of 40 chains between this corner and quarter corners to north and south.

  
William F. Lunser, L.S.

262728

OFFICE OF  
BENTON COUNTY RECORDER  
BENTON COUNTY, IAN  
CERTIFIED TO BE FILED  
AND FOR REGISTRATION

Dec 1 8 52 AM '99

ALICE G. GIBBS  
COUNTY RECORDER

BY 