

# CERTIFICATE OF LOCATION OF GOVERNMENT CORNER

Northeast Corner of Section 24, Township 38N, Range 31W, 4th P.M.

STATE OF MINNESOTA, County of Benton

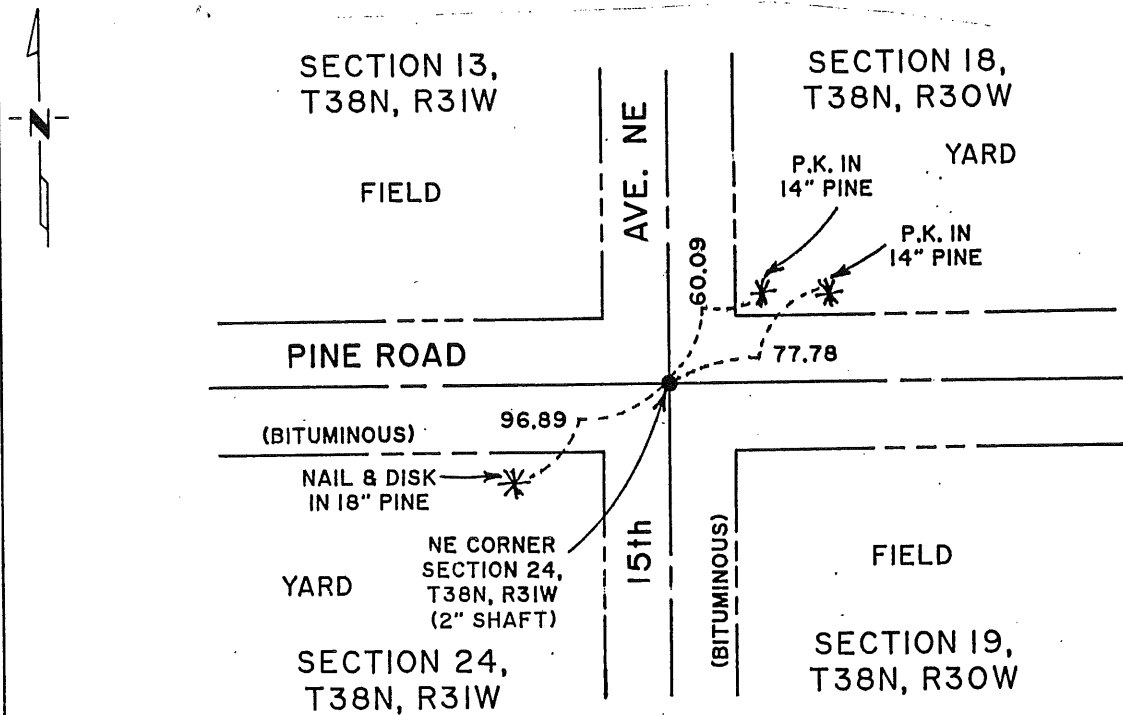
At the corner location shown on the sketch:

On 11-30-89 found a 2" Shaft  
DATE

left monument as found,  lowered monument,  removed monument (explain)

On \_\_\_\_\_ placed a \_\_\_\_\_  
DATE

### SKETCH OF REFERENCE TIES



Statement of evidence relative to this corner location is on back of page.

I hereby certify that this document and the data contained herein was prepared by me or under my direct supervision.

Bruce W. Shipton  
SIGNATURE

1-5-90  
DATE

Registration No. 17768

Land Surveyor,  Professional Engineer

County Surveyor,  County Engineer

OFFICE OF THE COUNTY RECORDER

County of Benton

I hereby certify that this document was filed in the Co. Recorders office at \_\_\_\_\_ M. on the \_\_\_\_\_ day of \_\_\_\_\_ A.D., 19 \_\_\_\_\_

County Recorder \_\_\_\_\_

By \_\_\_\_\_, Deputy

DOCUMENT NO. \_\_\_\_\_

Statement of Evidence:

1. The GLO was accomplished by Therodore Conkey in December 1849.
2. In 1964, Milner W. Carley & Associates, located a 2" shaft at the location of said corner and made reference ties. In 1974, Milner W. Carley & Associates found said 2" shaft and made new reference ties.
3. On November 30, 1989, Paul E. Wellen & Associates located a 2" shaft and made new reference ties as indicated.

195975

OFFICE OF  
BENTON COUNTY RECORDER  
BENTON COUNTY, MN  
CERTIFIED TO BE FILED  
AND/OR RECORDED ON

JAN 11 8 43 AM '90

ALICE G. ENGELMEYER  
COUNTY RECORDER

BY *gaw* DEPUTY