

Certified, Filed and or Recorded on
Mar. 08, 2011 AT 12:38PM

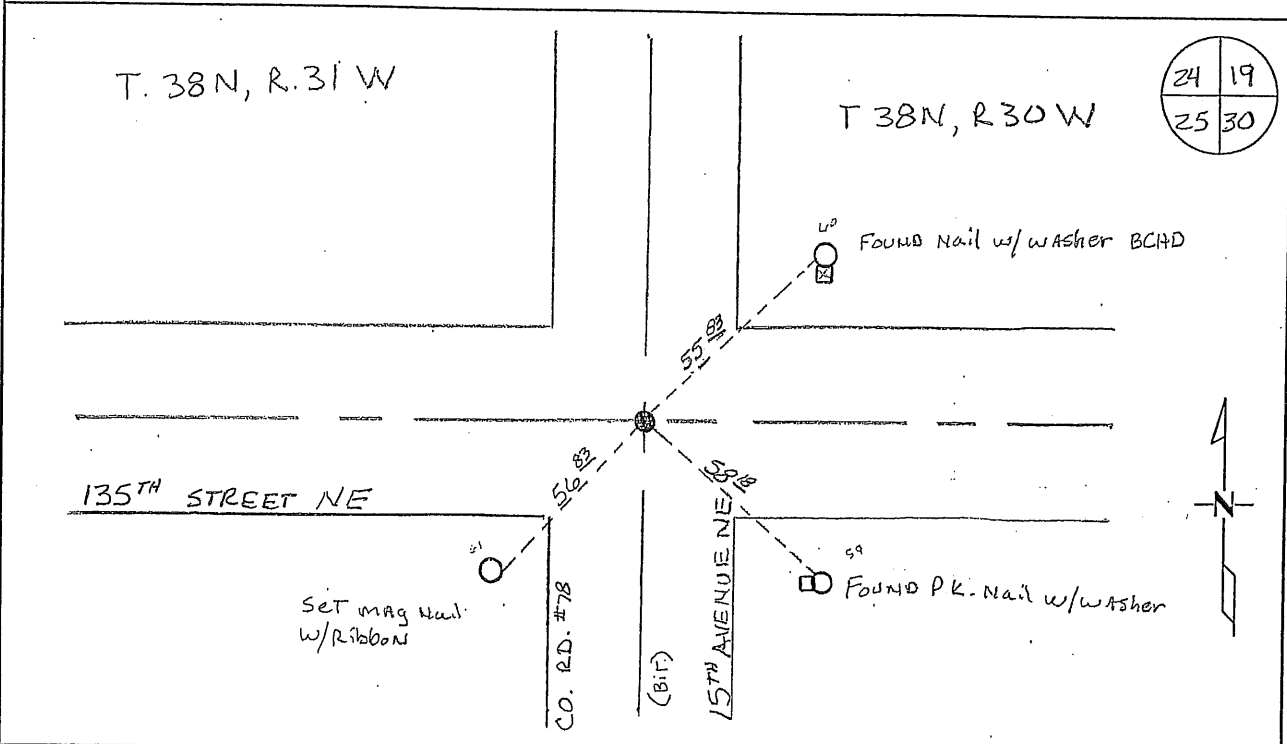
Signed: BW
MARILYN J NOVAK G V I
BENTON COUNTY MINNESOTA
MARILYN J NOVAK
COUNTY RECORDER

CERTIFICATE OF LOCATION OF GOVERNMENT CORNER

Northeast Corner of Section 25, Township 38 N, Range 31 W
4TH Principal Meridian, State of Minnesota, County of Benton

At the corner location shown on the sketch:

- On 02/16/2011 found a 8" spike with Ribbon
- left monument as found lowered monument removed monument (explain)
- On 02/16/2011 placed an 1/2" x 14" Iron pipe with Cap #19552



Statement of evidence for this corner location is on back of this page.

I hereby certify that this document was researched and prepared by me or under my direct supervision and that I am a licensed Land Surveyor under the laws of the State of Minnesota.

Signature Jerome C. Wittstock
Benton County Surveyor
License No. 19552

Date: 07 March 2011

Benton County Surveyor's Office
 Jerome C. Wittstock, County Surveyor
 Minnesota License No. 19552

Statement of Evidence:

D252

Northeast Corner of Section 25, Township 38 North, Range 31 West, East Langola Township, 4th Principal Meridian, Benton County, Minnesota.

- 1849 Original US General Land Office survey set a wood post in a mound with a pit 6 links south at the corner location.
- 1940 County Engineer's Notebook No. 133 contains a road survey for CAR No. 41 running south to north and terminating at this corner. Corner is shown as a hub set in the center of 4-way road intersection. Ties:
 Cor. FPNW 47.5'
 Cor. FPNE 45.8'
- 1941 County Engineer's Notebook No. 151 contains a road survey for CAR 41 running south to north on township line beginning at this corner. Corner is same as in 1940.
- Undated County Surveyor's Record Book 2, page 274, notes the following reference ties.
- | | | |
|------------------------------|----|-------|
| SW Corner Conc Survey Marker | SE | 50.4 |
| TP | SW | 51.35 |
- 1974 County Highway reference ties to a 3/8" re-rod.
 N&D PP SW 56.98
 State Goose Ref. Sign (top) NW 48.98
 N&C Post for Tele PedNE 56.32
- 1989 Bruce Skipton, LS 17768, found a 3/8" iron pin near the centerline intersection of roads south, east, and west and notes that GLO distances north and west to centerline of a creek fit with notes. Accepted pin as the corner and filed a Certificate of Location (#195980).
- 2011 The Benton County Surveyor's Office found a 8-inch spike at the intersection of roads, which does not match the 3/8-inch iron pin called for in 1989. The reference ties, while being similar appear to have changed/upgraded in the last 22 years. The found spike does fit Mr. Skipton's half-mile distance west about flat and north within 0.1 feet. Since the spike falls at the intersection of 4-way roads as called for in 1940 and fits Mr. Skipton's distances west and north within survey tolerance, it is accepted as marking the obliterated corner position. A 1/2-inch by 14-inch iron pipe capped "RLS 19552" was set in place of the found spike, GPS coordinates were collected and reference ties were established.

County Coordinates obtained by GPS
 NAD 83 (1996 Adjustment)
 N-175048.324
 E-478910.831

CERTIFICATE OF LOCATION OF GOVERNMENT CORNER

Northeast Corner of Section 25, Township 38N, Range 31W, 4th P.M.

STATE OF MINNESOTA, County of Benton

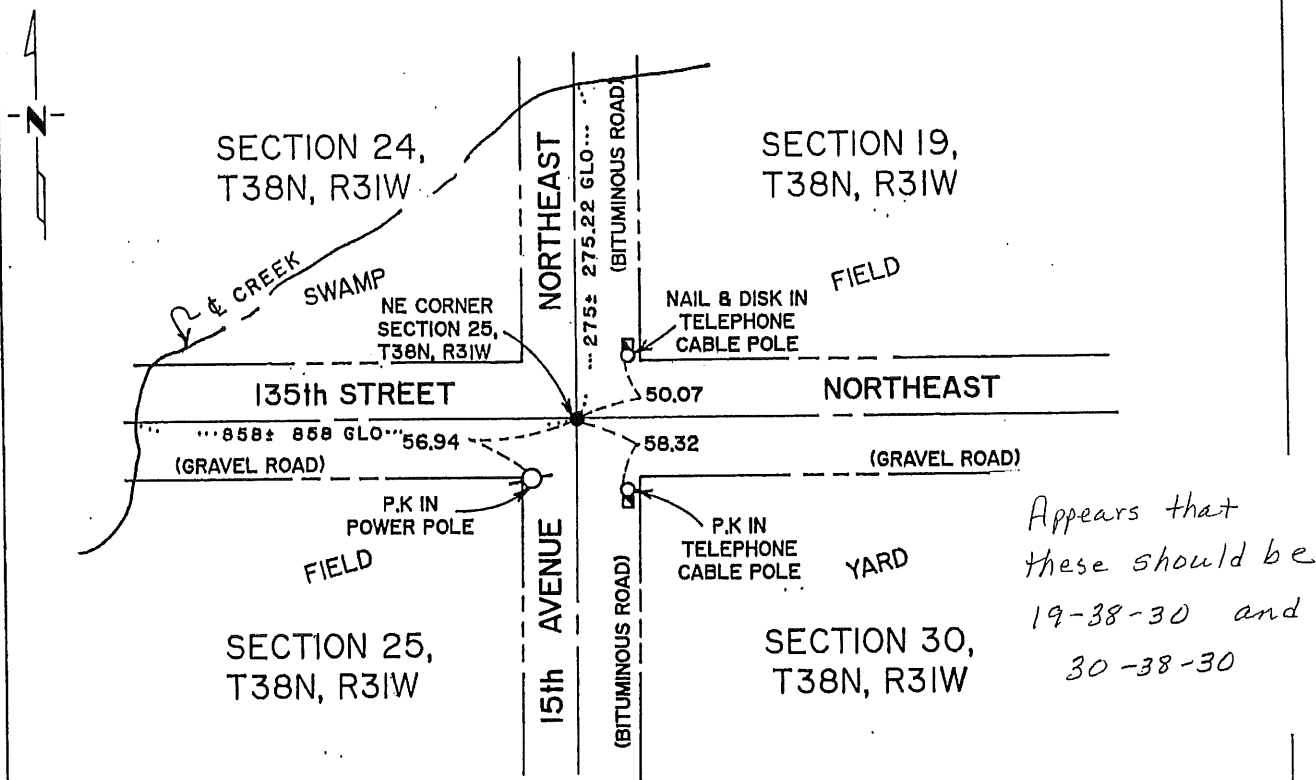
At the corner location shown on the sketch:

On 11-30-89 found a 3/8" pin
DATE

left monument as found, lowered monument, removed monument (explain)

On _____ placed a _____
DATE

SKETCH OF REFERENCE TIES



Statement of evidence relative to this corner location is on back of page.

I hereby certify that this document and the data contained herein was prepared by me or under my direct supervision.

Bence W. Skjott 1-5-90
SIGNATURE DATE

Registration No. 17768

Land Surveyor, Professional Engineer
 County Surveyor, County Engineer

OFFICE OF THE COUNTY RECORDER
County of Benton

I hereby certify that this document was filed in the Co. Recorders office at _____ .M. on the _____ day of _____ A.D., 19 _____

County Recorder _____

By _____, Deputy

DOCUMENT NO. _____

Statement of Evidence:

1. The GLO was accomplished by Therodore Conkey in December 1849.
2. The county records show no reference to this corner.
3. On November 30, 1989, Paul E. Wellen & Associates, Inc. found a 3/8" pin near the center line intersection of N - S and E - W roads. We measured 375± (375.22 GLO) north to the center line of a creek, and measured 858± (858 GLO) west to the center line of a creek. We accepted the position for the northeast corner, Section 25 and made reference ties as indicated.

195980

OFFICE OF
BENTON COUNTY RECORDER
BENTON COUNTY, MN
CERTIFIED TO BE FILED
AND/OR RECORDED ON

JAN 11 8 43 AM '90

ALICE C. EMBELMEYER
COUNTY RECORDER

BY Jed DEPUTY