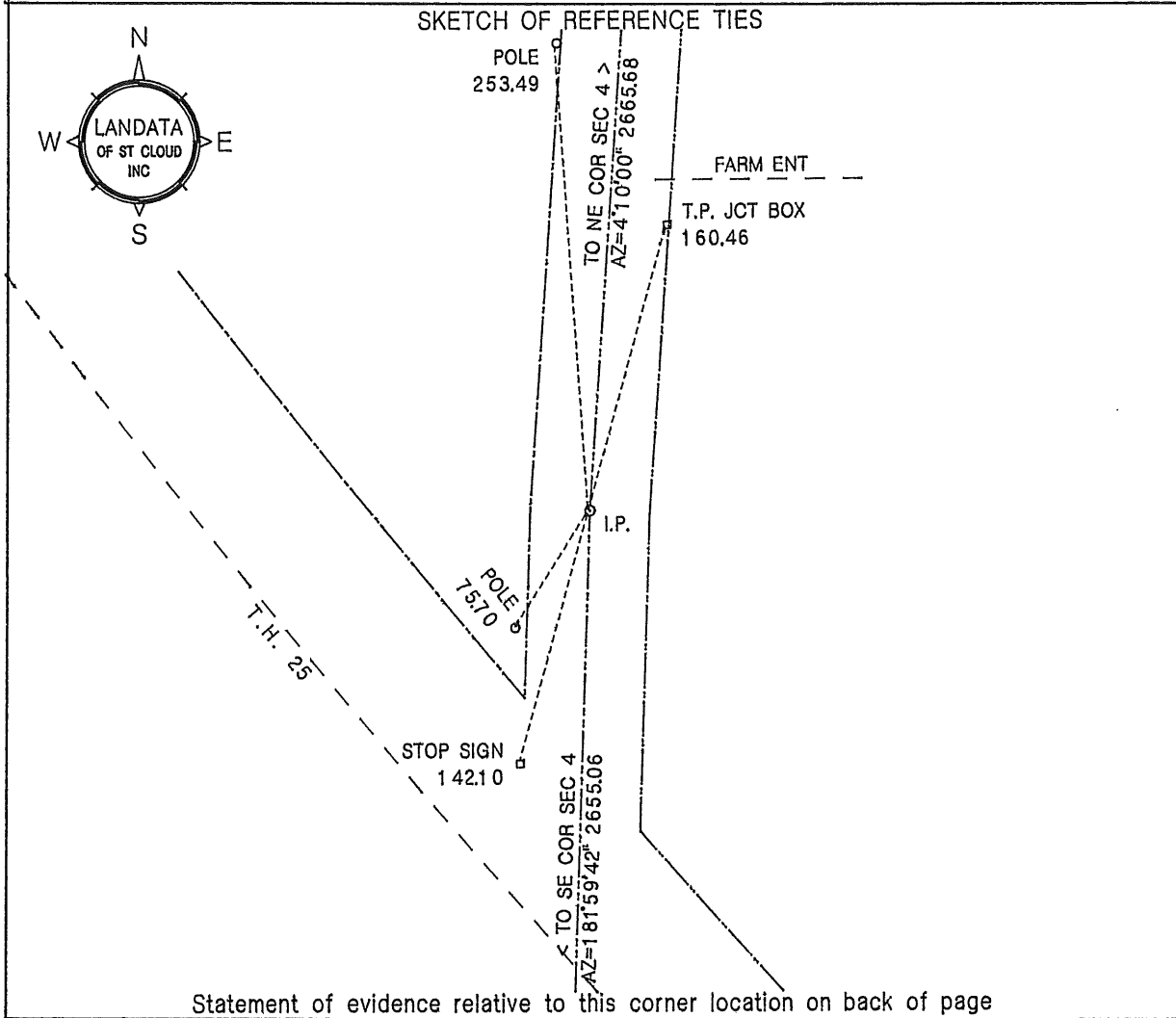


CERTIFICATE OF LOCATION OF GOVERNMENT CORNER

EAST QUARTER corner of Section 4, Township 37, Range 29, 4th P.M.
Benton County, Minnesota.

On May 14, 1997, a one half inch iron pipe (I.P.) was placed at this location.



Statement of evidence relative to this corner location on back of page

I hereby certify that this document and the data contained herein was prepared by me or under my direct supervision.

William F. Lunser 1-24-02
William F. Lunser, L.S. Date
Mn Reg No 9394

OFFICE OF THE COUNTY RECORDER
Benton County, Minnesota
I hereby certify that this document was filed in this office at ___; ___ M. on the ___ day of _____, 20___.

County Recorder _____

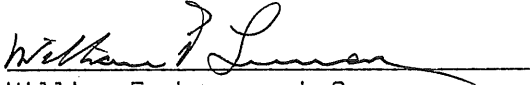
By _____ Deputy

DOCUMENT NO. _____

STATEMENT OF EVIDENCE:

No records were found to indicate remonumentation of this corner after its original placement by the U.S. Government Survey.

A one half inch iron pipe was placed on the centerline of a north-south road using single proportion measurements along the east line of Sec 4.



William F. Lunser, L.S.

283113

OFFICE OF
BENTON COUNTY RECORDER
BENTON COUNTY, MN
CERTIFIED TO BE FILED
AND/OR RECORDED ON

FEB 21 4 16 PM '02

MARILYN J. NOVAK
COUNTY RECORDER

By  DEPUTY