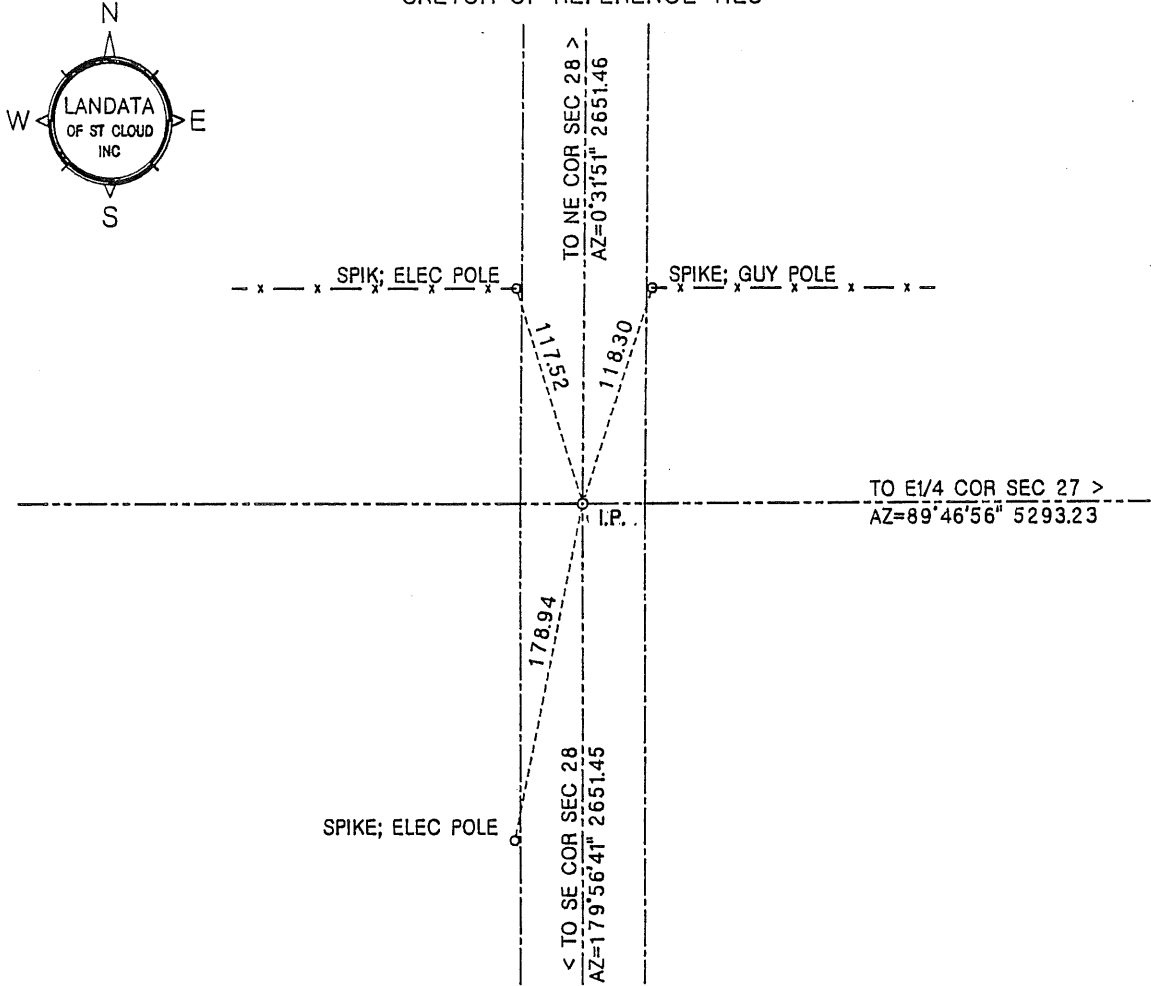


CERTIFICATE OF LOCATION OF GOVERNMENT CORNER

EAST QUARTER corner of Section 28, Township 37, Range 29, 4th P.M.
Benton County, Minnesota.

On Dec 11, 1991, A 1/2 inch iron pipe (I.P.) was placed at this location.

SKETCH OF REFERENCE TIES



Statement of evidence relative to this corner location on back of page

I hereby certify that this document and the data contained herein was prepared by me or under my direct supervision.

William F. Lunser 3/13/96
William F. Lunser, L.S. Date
Mn Reg No 9394

OFFICE OF THE COUNTY RECORDER
Benton County, Minnesota

I hereby certify that this document was filed in this office at ___:___ M. on the ___ day of _____, 19___.

County Recorder _____

By _____, Deputy


DOCUMENT NO. _____

STATEMENT OF EVIDENCE:

No records were found to indicate use or remonumentation of this corner after its original placement by the U.S. Government Survey.

A search of the area failed to uncover the marker. Occupation lines to east and west are poorly defined.

I therefor consider this corner lost, using the centerline of the north-south road and distances proportioned to the G.L.O. in its restoration.


William F. Lunser, L.S.

2 3 4 1 8 3

BENTON COUNTY RECORDER
BENTON COUNTY, MN
CERTIFIED TO BE FILED
AND/OR RECORDED ON

APR 10 2 36 PM '96

ALICE C. ENGELMEYER
COUNTY RECORDER

BY  DEPUTY *xm*