

Certified, Filed and or Recorded on
Dec. 16, 2008 AT 01:48PM

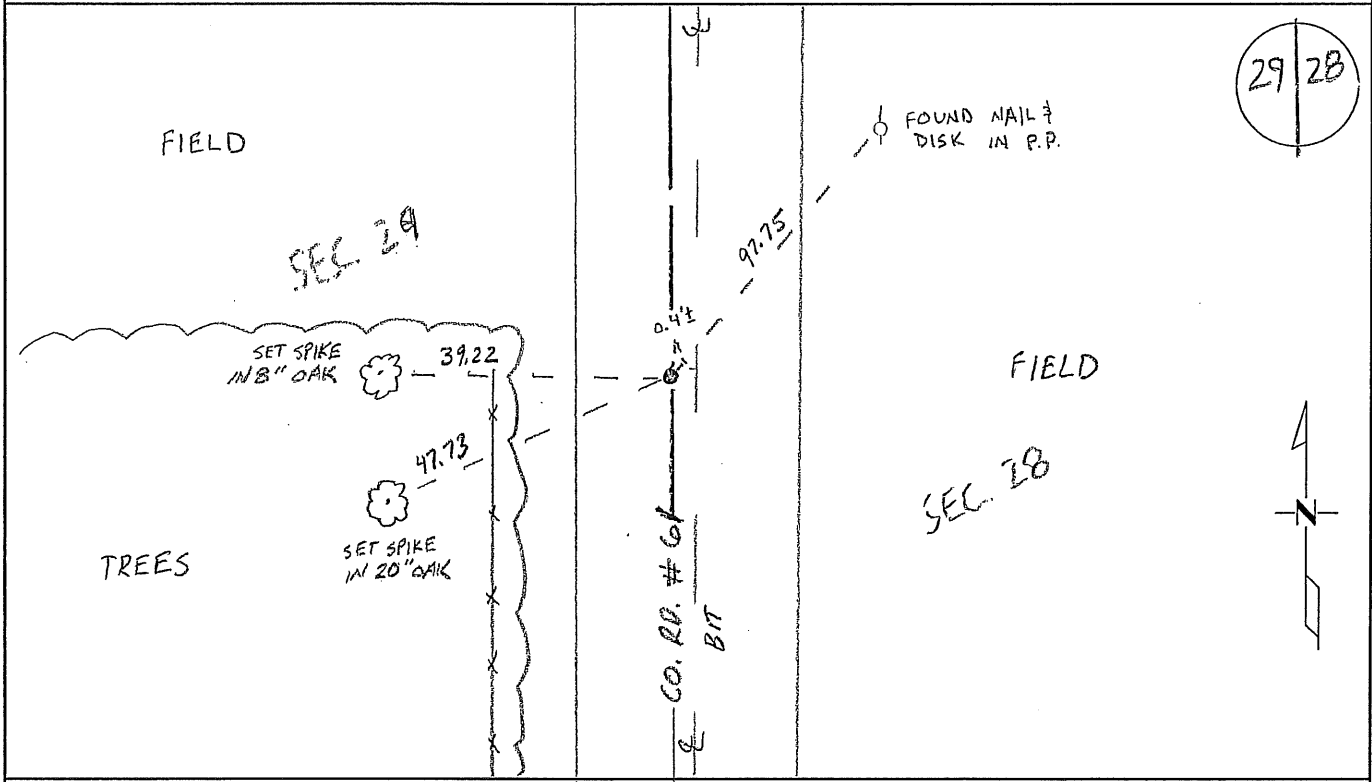
Signed: BW
MARILYN J NOVAK 6 V
BENTON COUNTY MINNESOTA
MARILYN J NOVAK
COUNTY RECORDER

CERTIFICATE OF LOCATION OF GOVERNMENT CORNER

EAST QUARTER Corner of Section 29, Township 37N, Range 29W
4TH Principal Meridian, State of Minnesota, County of Benton

At the corner location shown on the sketch:

- On _____ found a _____
- left monument as found lowered monument removed monument (explain)
- On 10/14/08 placed an P.K. NAIL WITH BENTON COUNTY SURVEYOR DISK



Statement of evidence for this corner location is on back of this page.

I hereby certify that this document was researched and prepared by me or under my direct supervision and that I am a licensed Land Surveyor under the laws of the State of Minnesota.

Signature *Janet M. O'Connell*
Deputy Benton County Surveyor
License No. 45872

Date: 11/06/2008

Benton County Surveyor's Office
 Jason W. Oberg, Deputy County Surveyor
 Minnesota License No. 45872

Statement of Evidence:

H293

East Quarter Corner of Section 29, Township 37 North, Range 29 West, Gilmanton Township, 4th Principal Meridian, Benton County, Minnesota.

1855 Original US General Land Office survey established corner marked by a wood post with bearing trees noted as:

10" Ash	N 31 W	22 links
18" Bur Oak	S 84 E	20 links

1949 County Highway Engineer's Notebook No. 169 contains road survey for CAR 37 running from south to north on the section line. Corner is shown marked by a hub set in the center of road with fence line west. Ties:

16" Elm	SW	48.0
18" Stump	SW	69.4

Stationing gives distances of 2638.3 feet to the SE corner and 2627.8 feet to the NE corner with corner being a POT.

1983 David Regan, LS 12236, found a 1/2" pipe in the centerline of roads north/south and a fence line west. He filed a Certificate of Location (#167984).

2003 Westwood Professional Services, Inc. found 1/2" iron pipe that checked with 1983 ties on certificate. Also noted an Elm stump SW at 48 feet that fit 1941 highway tie. Measured 2640.92 feet to the SE corner and 2627.00 feet to the NE corner.

2008 The County Surveyor's Office searched and found a 1/2" iron pipe at approximately 3" west of the centerline of north-south road (County Road No. 61). Position agrees with the 1949 distances to the NE and SE corners (2627.0 ft. & 2640.9 ft. vs. 2627.8 ft. & 2638.3 ft, respectively). The Surveyor accepts the position of the iron and set a PK nail over the iron pipe with a Benton County Surveyor disk flush with the road surface and updated ties.

County Coordinates Obtained by GPS to 1/2" iron pipe
 NAD 83 (1996 Adjustment)
 N- 140373.114
 E- 521226.191

CERTIFICATE OF LOCATION OF GOVERNMENT CORNER

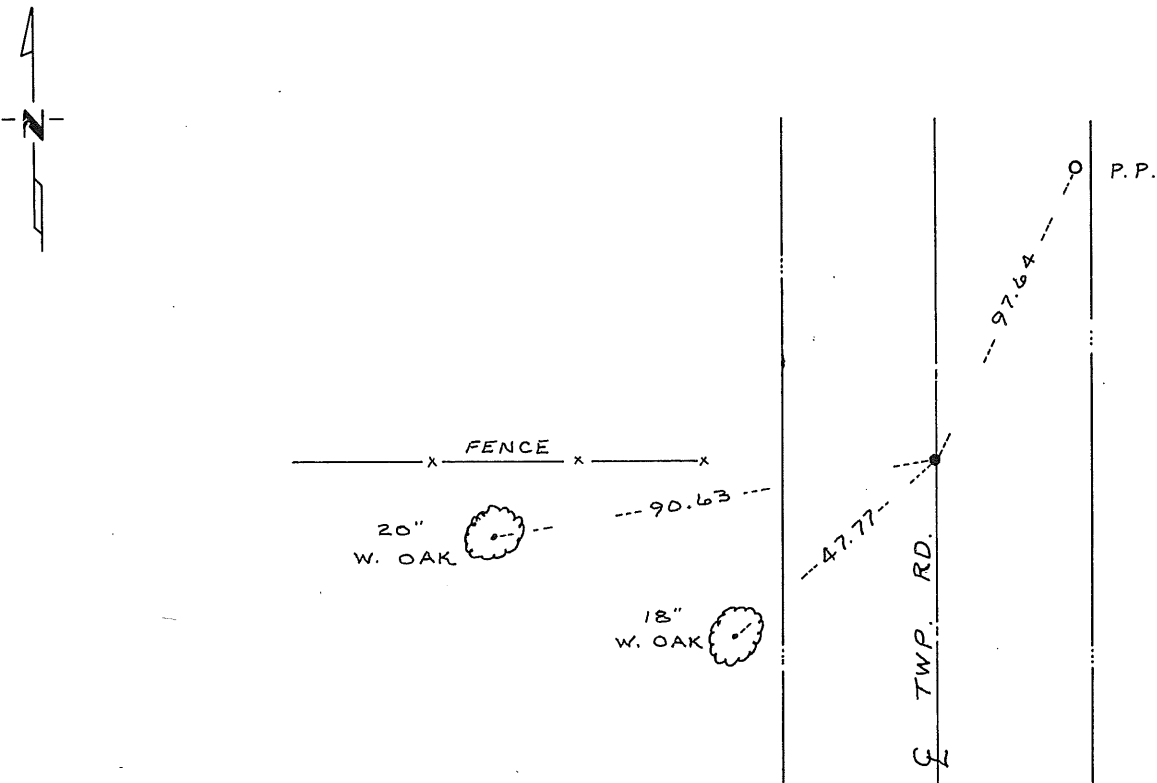
East Quarter _____ Corner of Section 29, Township 37, Range 29, 4th P.M.

STATE OF MINNESOTA, County of Benton

At the corner location shown on the sketch:

- On 11/16/83 found a capped 1/2 inch iron pipe in center line of
Township Road north-south and fence line west
 left monument as found, lowered monument, removed monument (explain)
- On _____ placed a _____
DATE

SKETCH OF REFERENCE TIES



Statement of evidence relative to this corner location is on back of page.

I hereby certify that this document and the data contained herein was prepared by me or under my direct supervision.

David G. Regun
SIGNATURE 1/3/84
DATE

Registration No. 12236

- Land Surveyor, Professional Engineer
- County Surveyor, County Engineer

County Recorder
OFFICE OF THE REGISTER OF DEEDS
County of Benton

I hereby certify that this document was filed in the Reg. of Deeds office at 4 P.M. on the 11th day of January A.D., 1984
County Recorder
Register of Deeds F.L. Johnson

By _____, Deputy

DOCUMENT NO. 167984