

A 361520

Certified, Filed and or Recorded on  
Nov. 05, 2008 AT 08:38AM

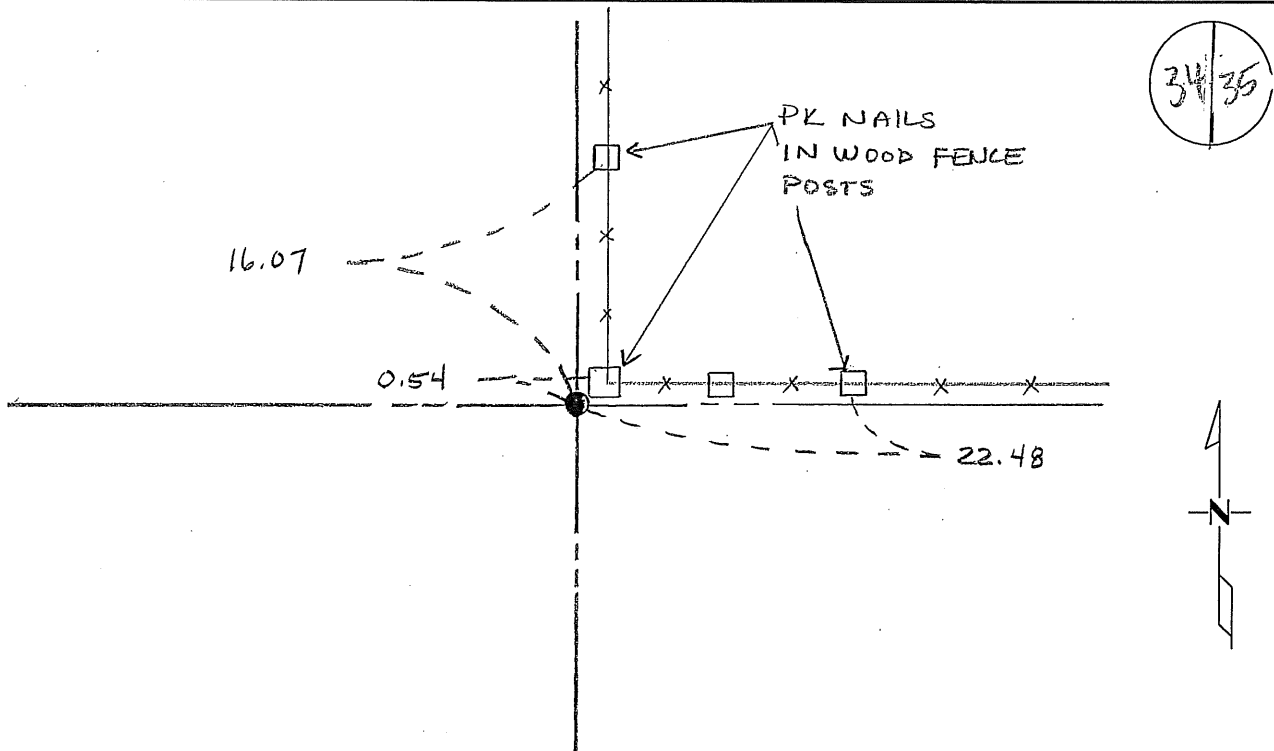
Signed: MJ  
MARILYN J NOVAK G V I  
BENTON COUNTY MINNESOTA  
MARILYN J NOVAK  
COUNTY RECORDER

# CERTIFICATE OF LOCATION OF GOVERNMENT CORNER

EAST QUARTER Corner of Section 34, Township 37N, Range 29W  
4TH Principal Meridian, State of Minnesota, County of Benton

At the corner location shown on the sketch:

- On 23 OCT 2008 found a 2" IRON PIPE 0.5 +/- SOUTHWEST OF  
FENCE CORNER
- left monument as found       lowered monument       removed monument (explain)
- On \_\_\_\_\_ placed an \_\_\_\_\_



Statement of evidence for this corner location is on back of this page.

I hereby certify that this document was researched and prepared by me or under my direct supervision and that I am a licensed Land Surveyor under the laws of the State of Minnesota.

Signature Jan W. Oly  
Deputy Benton County Surveyor  
License No. 45872

Date: 11/04/2008

**Statement of Evidence:**

**H343**

East Quarter Corner of Section 34, Township 37 North, Range 29 West, Gilmanton Township, 4<sup>th</sup> Principal Meridian, Benton County, Minnesota.

1855 Original US General Land Office survey set a wood post with bearing trees noted as:

10" Elm	S 67 W	21 links
12" Blk Ash	N 42 E	6 links

No Date County Surveyor's Record Book 1, page 527, gives a distance of 2644.0 feet to the NE corner of Section 34.

1983 Sidney Williamson, LS 10918, found a 2" iron pipe 0.54 feet SW of a fence corner north/east/west. He filed a Certificate of Location (#168501).

1988 Paul Wellen's records, LS 10461, show a 2" iron pipe found and used.

2004 MN/DOT Coordinates Obtained by GPS  
NAD 83 (1996 Adjustment)  
N- 134967.236  
E- 531823.046

2008 The County Surveyor's Office searched and found a 2" iron pipe approximately 0.5 feet southwest of the corner of a north and east fence line, which checks with tie by Williamson in 1983. The position gives a distance to the NE corner of 2646.52 feet which agrees with the pre-1983 distance of 2644.0 feet. Position fits occupation and the Surveyor accepts the position as best evidence and updated ties. Coordinates to same agrees with those reported in 2004 above.

# CERTIFICATE OF LOCATION OF GOVERNMENT CORNER

EAST QUARTER Corner of Section 34, Township 37 N., Range 29 W., 4th P.M.

STATE OF MINNESOTA, County of BENTON

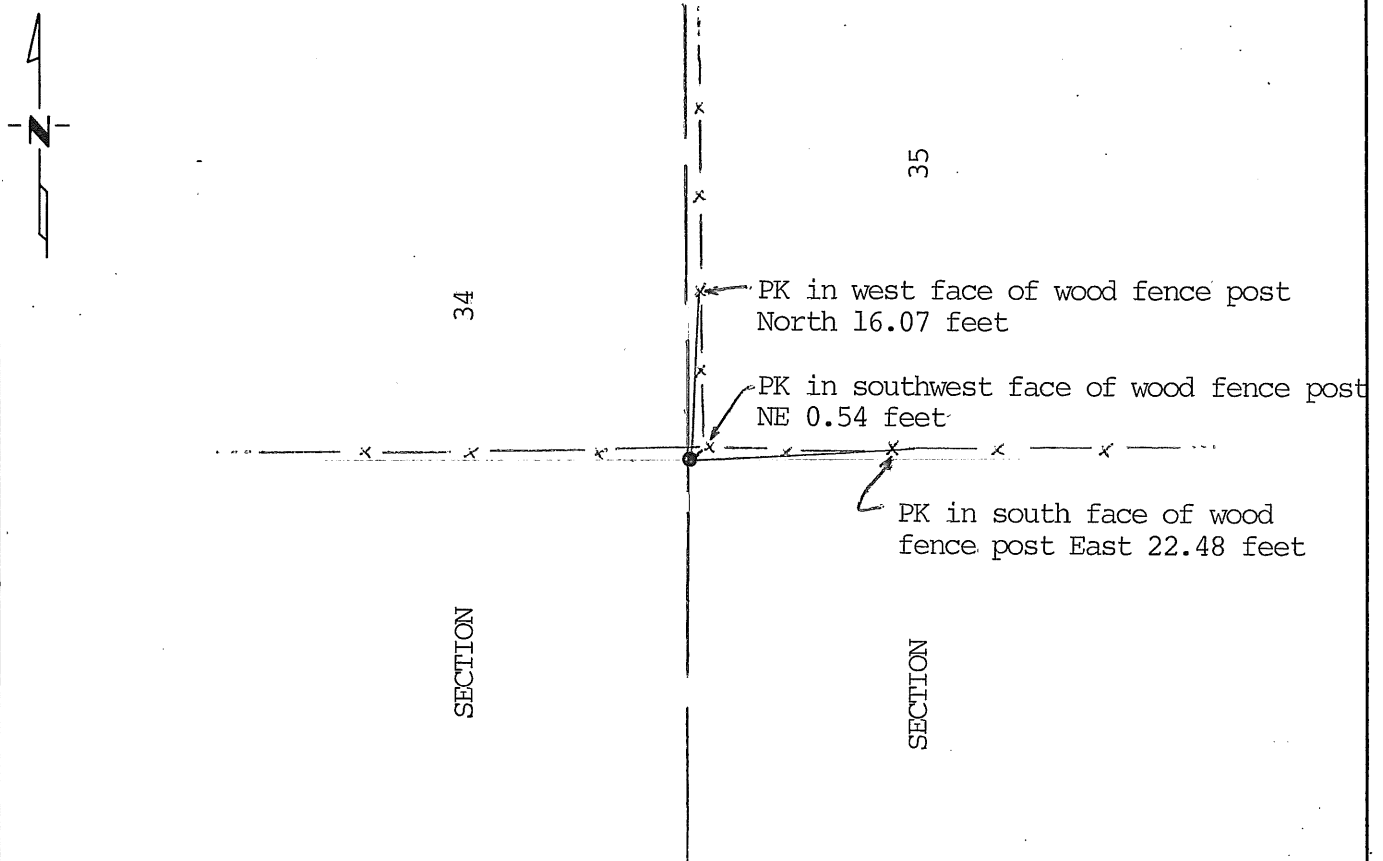
At the corner location shown on the sketch:

On Dec 12, 1983 found a 2" iron pipe 0.54' southwest of fence intersection  
DATE

left monument as found,  lowered monument,  removed monument (explain)

On \_\_\_\_\_ placed a \_\_\_\_\_  
DATE

### SKETCH OF REFERENCE TIES



Statement of evidence relative to this corner location is on back of page.

I hereby certify that this document and the data contained herein was prepared by me or under my direct supervision.

Sidney F. Williamson 2/23/84  
SIGNATURE DATE

Registration No. 10918

- Land Surveyor,  Professional Engineer
- County Surveyor,  County Engineer

OFFICE OF THE ~~REGISTER~~ OF DEEDS  
County of Benton

I hereby certify that this document was filed in the Reg. of Deeds office at 10 .M. on the 2nd day of March A.D., 1984

Register of Deeds F. O. Johnson

By \_\_\_\_\_, Deputy

DOCUMENT NO. 168501